

POSITIONS/ CONTACTS	A		B		C	
	INCH	MM	INCH	MM	INCH	MM
02/04**	0.100	2.54	0.216	5.48	N/A	N/A
03/06	0.200	5.08	0.316	8.02	0.100	2.54
04/08	0.300	7.62	0.416	10.56	0.200	5.08
05/10	0.400	10.16	0.516	13.10	0.300	7.62
06/12	0.500	12.70	0.616	15.64	0.400	10.16
07/14	0.600	15.24	0.716	18.18	0.500	12.70
08/16	0.700	17.78	0.816	20.72	0.600	15.24
09/18	0.800	20.32	0.916	23.26	0.700	17.78
10/20	0.900	22.86	1.016	25.80	0.800	20.32
11/22	1.000	25.40	1.116	28.34	0.900	22.86
12/24	1.100	27.94	1.216	30.88	1.000	25.40
13/26	1.200	30.48	1.316	33.42	1.100	27.94
14/28	1.300	33.02	1.416	35.96	1.200	30.48
15/30	1.400	35.56	1.516	38.50	1.300	33.02
16/32	1.500	38.10	1.616	41.04	1.400	35.56
17/34	1.600	40.64	1.716	43.58	1.500	38.10
18/36	1.700	43.18	1.816	46.12	1.600	40.64
19/38	1.800	45.72	1.916	48.66	1.700	43.18
20/40	1.900	48.26	2.016	51.20	1.800	45.72
21/42	2.000	50.80	2.116	53.74	1.900	48.26
22/44	2.100	53.34	2.216	56.28	2.000	50.80
23/46	2.200	55.88	2.316	58.82	2.100	53.34
24/48	2.300	58.42	2.416	61.36	2.200	55.88
25/50	2.400	60.96	2.516	63.90	2.300	58.42
26/52	2.500	63.50	2.616	66.44	2.400	60.96
27/54	2.600	66.04	2.716	68.98	2.500	63.50
28/56	2.700	68.58	2.816	71.52	2.600	66.04
29/58	2.800	71.12	2.916	74.06	2.700	68.58
30/60	2.900	73.66	3.016	76.60	2.800	71.12
31/62	3.000	76.20	3.116	79.14	2.900	73.66
32/64	3.100	78.74	3.216	81.68	3.000	76.20
33/66	3.200	81.28	3.316	84.22	3.100	78.74
34/68	3.300	83.82	3.416	86.76	3.200	81.28
35/70	3.400	86.36	3.516	89.30	3.300	83.82
36/72	3.500	88.90	3.616	91.84	3.400	86.36
37/74	3.600	91.44	3.716	94.38	3.500	88.90
38/76	3.700	93.98	3.816	96.92	3.600	91.44
39/78	3.800	96.52	3.916	99.46	3.700	93.98
40/80	3.900	99.06	4.016	102.00	3.800	96.52

\*\* NOT AVAILABLE WITH GUIDE POST

**NOTES:**

- INSULATOR MATERIAL: NYLON 9T, UL 94V-0, COLOR: BLACK
- CONTACT MATERIAL: PHOSPHOR BRONZE
- CONTACT PLATING: .000030" - .000050" NICKEL UNDERPLATE, GOLD FLASH OVERALL
- CURRENT RATING: 3 AMPS
- INSULATOR RESISTANCE: 5000 MEGOHMS MIN.
- CONTACT RESISTANCE: 20 MILLIOHMS MAX.
- DIELECTRIC WITHSTANDING: 1000 V AC
- OPERATING TEMPERATURE: -40°C TO +105°C
- \*PROCESSING TEMP.: 230° C MAX FOR 60 SECONDS (260° C MAX FOR 10 SECONDS)
- FOR TOP/BOTTOM ENTRY
- CONSULT FACTORY FOR THE MATE IF BEING USED AS BOTTOM ENTRY

\* (INDICATED TEMPERATURE AND TIME IS FOR COMPONENT INSULATOR. HIGHER PROCESSING TEMPERATURES MAY BE USED, PROVIDED HEAT IS APPLIED FROM BACK SIDE OF PCB, AND INSULATOR DOES NOT EXCEED INDICATED TEMPERATURE AND TIME.)

**PART NUMBER CODING**  
SFM850-NPPC-D -S -BK

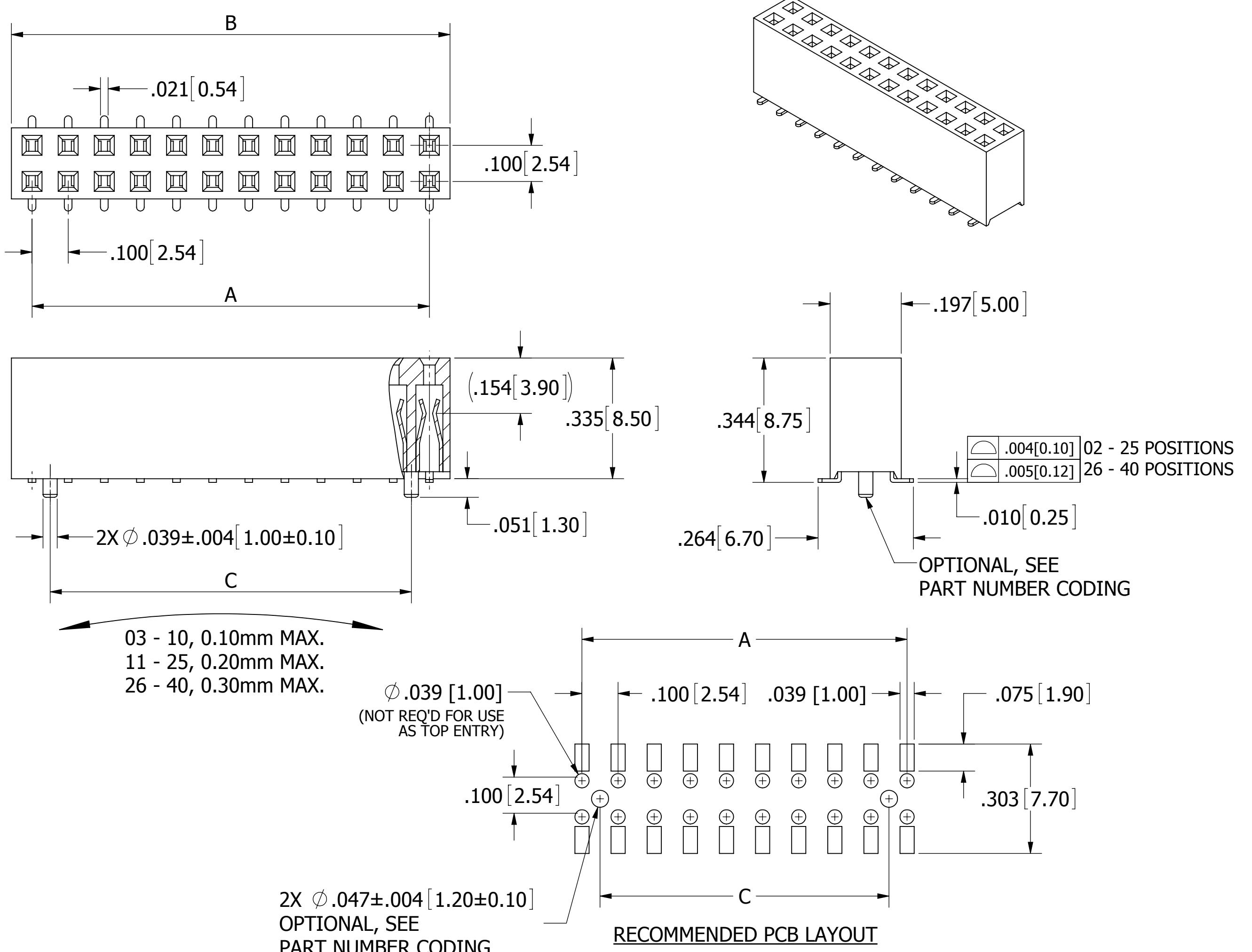
**MOUNTING STYLES**

M = SURFACE MOUNT W/O GUIDE POSTS  
P = SURFACE MOUNT W/ GUIDE POSTS

**NUMBER OF POSITIONS**

(CONTACTS PER ROW, 02 THRU 40)

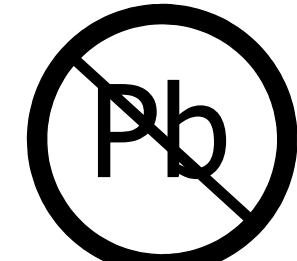
REVISIONS				
REV.	ECO. NO	DESCRIPTION	DATE	BY
A	2399	INITIAL RELEASE	07/18/2011	GC
B	3090	UPGRADE INSULATOR MATERIAL NYLON 9T(WAS NYLON 6T)	10/29/2014	LH
C	3522	UPDATE FRONT VIEW, ADD WARP TOLERANCE AND SMT TAIL COPLANAR TOLERANCE ON DRAWING	09/06/2016	LH



Ø .039 [1.00]  
(NOT REQ'D FOR USE AS TOP ENTRY)

2X Ø .047±.004 [1.20±0.10]  
OPTIONAL, SEE PART NUMBER CODING

**RECOMMENDED PCB LAYOUT**



RoHS COMPLIANT

UNLESS OTHERWISE SPECIFIED: DIMENSIONS ARE IN INCHES [MM]		DRAWN	DATE	NAME	
			07/18/11	GC	
TOLERANCES:					THE INFORMATION HEREIN CONTAINS PROPRIETARY INFORMATION OF SULLINS ELECTRONICS AND IS NOT TO BE REPRODUCED, USED OR DISCLOSED TO OTHERS FOR ANY PURPOSE EXCEPT AS SPECIFICALLY AUTHORIZED IN WRITING BY AN OFFICER OF SULLINS ELECTRONICS.
ANGULAR: ± 1°					
DECIMALS					
.XX= ± .012 [3]					
.XXX= ± .008 [20]					
.XXXX= ± .0040 [100]					
TITLE					<b>HEADER FEMALE, .100 CC, T/B ENTRY</b> PART NUMBER <b>SFM850-NPPC-D -S -BK</b>
SCALE: 4:1					
SIZE	CAGE CODE	DWG. NO.	REV		
C	54453	11811	C		
SHEET 1 OF 1					