

4

3

2

1

THIS DRAWING IS UNPUBLISHED.

RELEASED FOR PUBLICATION

AUG ,2006.

© COPYRIGHT BY TYCO ELECTRONICS CORPORATION.

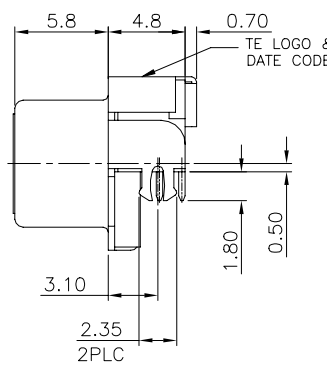
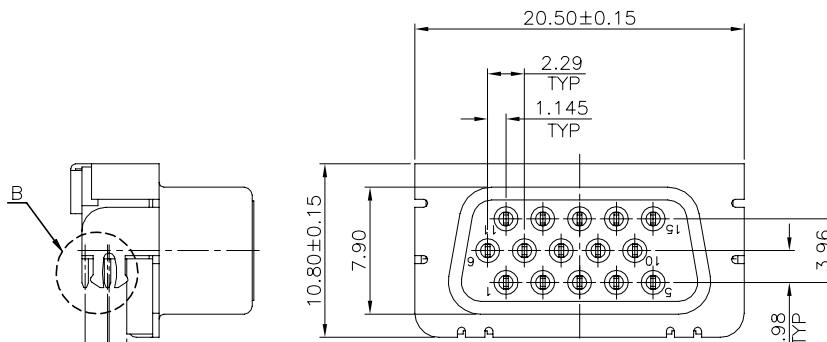
ALL RIGHTS RESERVED.

LOC DW

DIST -

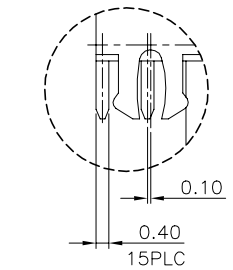
REVISIONS

| P | LTR | DESCRIPTION | DATE | DWN | APVD |
|---|-----|---------------|-----------|-----|------|
| | D4 | ECO-20-004684 | 01APR2020 | RR | SH |

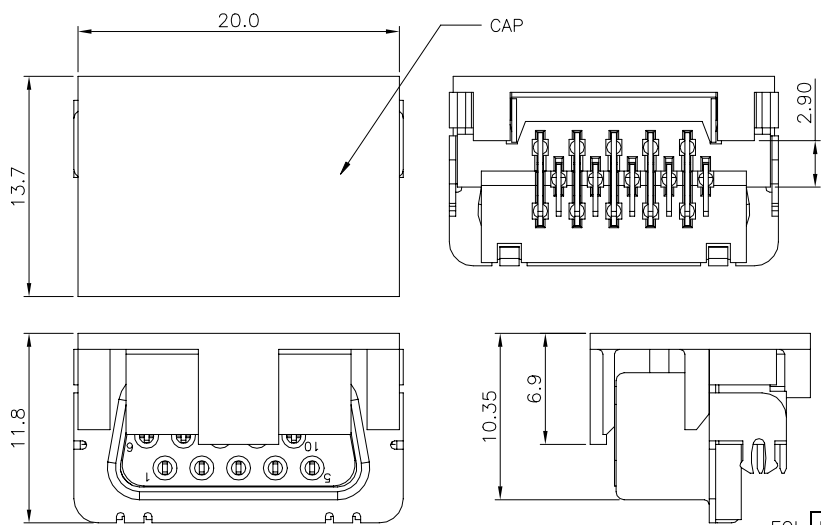
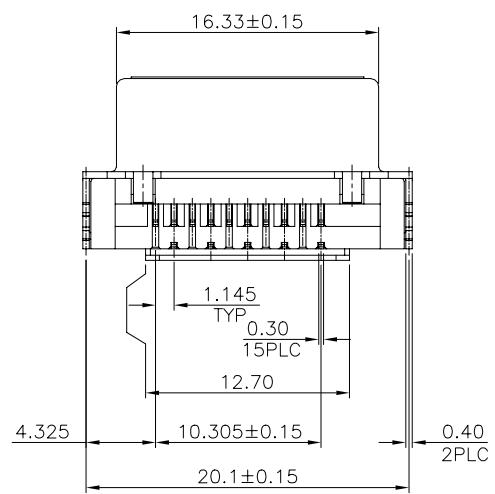


NOTES:

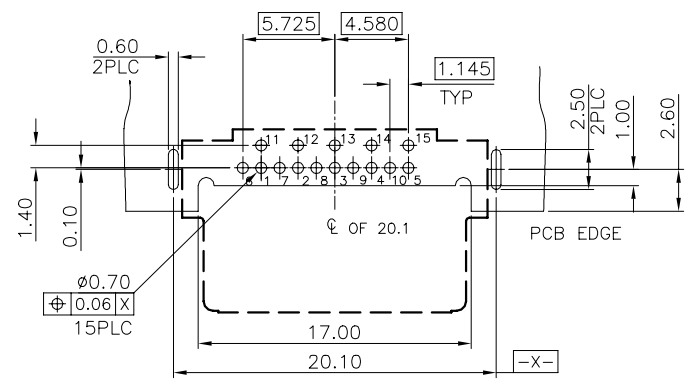
- MATERIAL:
HOUSING: PA9T, UL 94V-0, COLOR: BLACK.
CAP: PA6T, UL 94V-0, COLOR: BLACK.
CONTACTS: BRASS.
FRONTSHELL: SPCC.
REARSHELL: SPCC.
 - FINISH:
CONTACTS: GOLD FLASH PLATED ON CONTACT AREA, 2.54um[100u"] MIN. MATTE-TIN PLATED ON SOLDER TAIL, 1.27um[50u"] MIN. NICKEL UNDERPLATED OVER ALL.
FRONTSHELL: 2.54um[100u"] MIN. NICKEL OR BLACK NICKEL PLATED.
REARSHELL: 2.54um[100u"] MIN. NICKEL OR BLACK NICKEL PLATED.
 - RECOMMENDED PCB THICKNESS: 1.2mm.
 - REFLOW SOLDER CAPABLE TO 260°C PER TE SPEC 109-201, CONDITION B.
- ⚠ NO BOARD LOCK FUNCTION.



DETAIL B
SCALE 2:1



CONNECTOR WITH CAP
(REFERENCE)



⚠ RECOMMEND P.C.B LAYOUT(T=1.20mm)
TOP VIEW(TOLERANCE:±0.05)

| | | |
|-----|---------------------------|-------------|
| EOL | BLACK NICKEL | 1775763-2 |
| EOL | NICKEL | 1775763-1 |
| | FRONT & REAR SHELL PLATED | PART NUMBER |

| | | | | |
|---|--|--|--|-------------------------|
| THIS DRAWING IS A CONTROLLED DOCUMENT. | | DWN B. HSING 16APR2009 | Tyco Electronics Corporation Taipei, Taiwan | |
| DIMENSIONS: MM | | CHK S. CHIEN 16APR2009 | NAME D-SUB, 15P, R/A, SLIM, RVS, DIP | |
| TOLERANCES UNLESS OTHERWISE SPECIFIED: 0 PLC ± - 1 PLC ± 0.30 2 PLC ± 0.25 3 PLC ± 0.15 4 PLC ± - ANGLES ± 3' | | APVD W. KODAMA 16APR2009 | PRODUCT SPEC 108-57584 | |
| MATERIAL SEE NOTE | | QUALIFICATION TEST REPORT 501-57794 | WEIGHT 4.0 GRAMS | |
| FINISH SEE NOTE | | CUSTOMER DRAWING | | RESTRICTED TO - |
| | | SIZE A3 | CAGE CODE 00779 | DRAWING NO C=1775763 |
| | | SCALE - | | SHEET 1 OF 3 |
| | | | | REV D4 |

4

3

2

1

THIS DRAWING IS UNPUBLISHED.

RELEASED FOR PUBLICATION

AUG ,2006.

© COPYRIGHT - BY TYCO ELECTRONICS CORPORATION.

ALL RIGHTS RESERVED.

LOC

DIST

REVISIONS

| P | LTR | DESCRIPTION | DATE | DWN | APVD |
|---|-----|--------------|------|-----|------|
| | | SEE SHEET 1. | | | |

OBSOLETE

EOL 2-1775763-1

EOL 1-1775763-1

PART NUMBER

| | | | | | |
|--|--------|------------------|--|--|--|
| THIS DRAWING IS A CONTROLLED DOCUMENT. | | DWN | Tyco Electronics Corporation Taipei, Taiwan | | |
| DIMENSIONS: MM | | CHK | NAME D-SUB, 15P, R/A, SLIM, RVS, DIP | | |
| TOLERANCES UNLESS OTHERWISE SPECIFIED: | | APVD | SIZE CAGE CODE DRAWING NO RESTRICTED TO | | |
| 0 PLC ± - | | PRODUCT SPEC | A3 00779 C=1775763 | | |
| 1 PLC ± 0.30 | | APPLICATION SPEC | SCALE SHEET 2 OF 3 REV D4 | | |
| 2 PLC ± 0.20 | | WEIGHT 3.8 GRAMS | | | |
| 3 PLC ± 0.20 | | CUSTOMER DRAWING | | | |
| 4 PLC ± - | | | | | |
| 4 ANGLES ± 3' | | | | | |
| MATERIAL | FINISH | | | | |

4

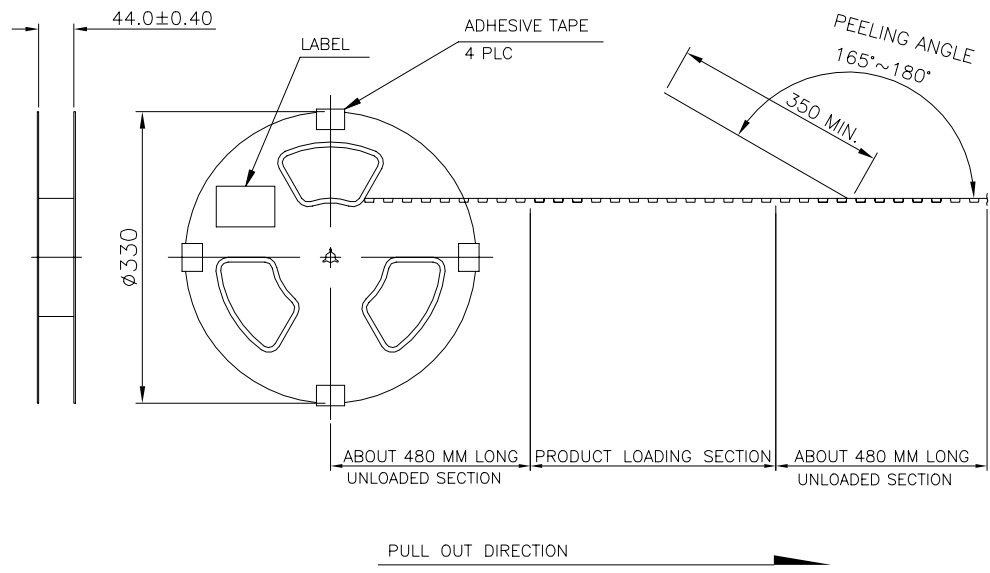
3

2

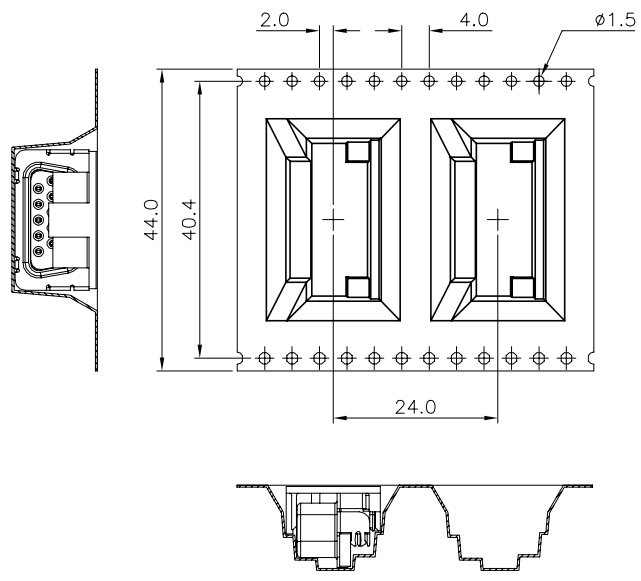
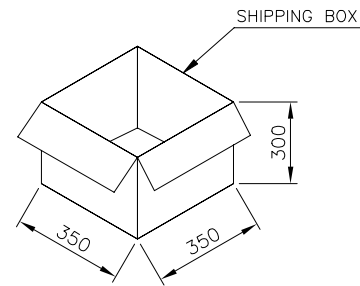
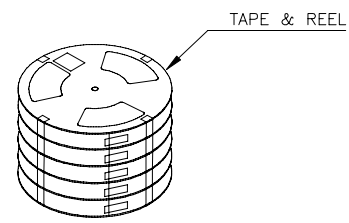
1

THIS DRAWING IS UNPUBLISHED. RELEASED FOR PUBLICATION AUG, 2006.
 © COPYRIGHT BY TYCO ELECTRONICS CORPORATION. ALL RIGHTS RESERVED.

| LOC | DIST | REVISIONS | | | |
|-----|------|--------------|------|-----|------|
| P | LTR | DESCRIPTION | DATE | DWN | APVD |
| DW | | SEE SHEET 1. | | | |



- NOTES:
1. DIMENSION:
 REEL: $\phi = 330$.
 SHIPPING BOX: L=350, W=350, H=300.
 2. QUANTITY: SEE TABLE.
 3. SHIPPING BOX WEIGHT: SEE TABLE.



| | | | | |
|----------|--------------------|----------------|----------|----------|
| 200 | 6 | 1200 | 7.5 | 4.2 |
| PCS/REEL | REELS/SHIPPING BOX | QUANTITY (PCS) | G/W (Kg) | N/W (Kg) |

THIS DRAWING IS A CONTROLLED DOCUMENT.

| | | | | | | | | |
|----------------|--|-----------|-----------|-----------|-----------|-----------|------------|--------|
| DIMENSIONS: MM | TOLERANCES UNLESS OTHERWISE SPECIFIED: | 0 PLC ± - | 1 PLC ± - | 2 PLC ± - | 3 PLC ± - | 4 PLC ± - | ANGLES ± - | FINISH |
| MATERIAL | | | | | | | | |

| | | | | | |
|-----|------|--------------|------------------|--------|------------------|
| CHK | APVD | PRODUCT SPEC | APPLICATION SPEC | WEIGHT | CUSTOMER DRAWING |
| DWN | | | | | |

Tyco Electronics Tyco Electronics Corporation
 Taipei, Taiwan

NAME: D-SUB, 15P, R/A, SLIM, RVS, DIP

| | | | |
|------|-----------|------------|---------------|
| SIZE | CAGE CODE | DRAWING NO | RESTRICTED TO |
| A3 | 00779 | C=1775763 | |

SCALE: SHEET 3 OF 3 REV D4