

TOLERANCE UNLESS OTHERWISE SPECIFIED IN MM:

0.0	± 0.38	ANGLE
0.00	± 0.25	0. ±3°
0.000	± 0.05	0.0 ±1°

THIS IS A C.A.D. GENERATED DRAWING  
DO NOT MAKE MANUAL REVISIONS TO MASTER.



ISSUE NUMBER	
ORIGINAL	①
REDRAWN	
P.M. NOV. 25/2020	②
UPDATE PACKAGING DWG	
P.M. JAN. 04/2021	③

NOTES:

MATERIAL:

HOUSING: LCP UL94 V-0  
CONTACT: COPPER ALLOY  
SHELL: SUS304-H, T=0.30±0.03mm  
SHILD: SUS304-H, T=0.12±0.03mm

ELECTRICAL:

CONTACT RESISTANCE: 40mΩ MAX  
CURRENT: 5A MIN FOR VBUS; 0.25A MIN FOR OTHER.  
VOLTAGE: 20 V MAX  
WITHSTANDING VOLTAGE: 100V AC  
INSULATION RESISTANCE: 100MΩ MIN

MECHANICAL:

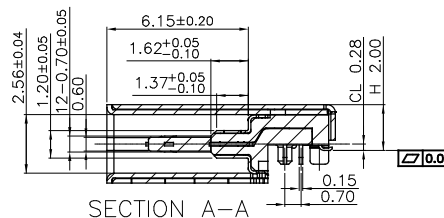
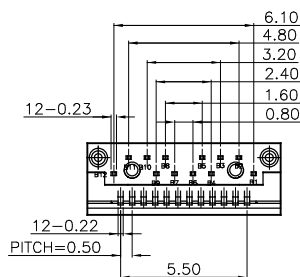
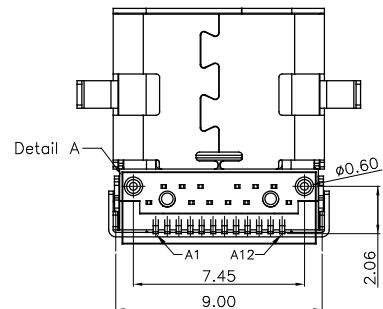
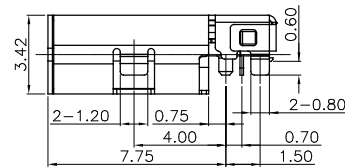
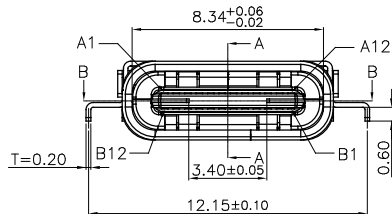
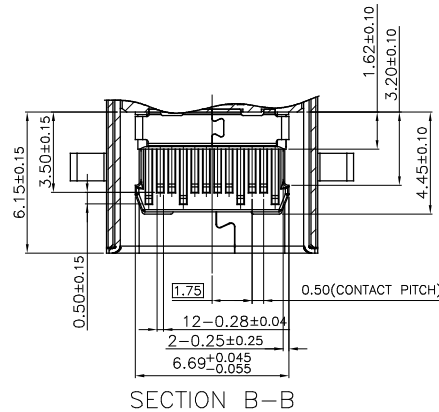
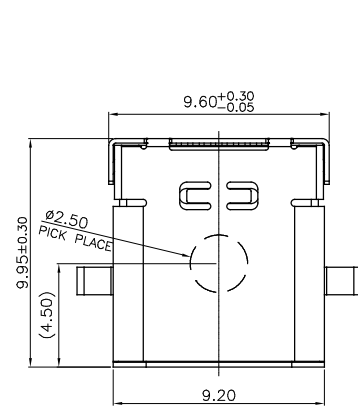
INSERTION: 5~20N.  
EXTRACTION: 8~20N.  
DURABILITY: 10,000 CYCLES

PLATING:

CONTACT: GOLD PLATED Min ON CONTACT AREA, 100u"  
Min TIN (LEAD FREE) ON SOLDER AREA,  
SHELL: 50u"Min NICKEL PLATING ALL OVER.

ENVIRONMENTAL:

TEMPERATURE RANGE -55°C ~ +85°C



PART NUMBERS	
GOLD FLASH	690-024-234-031
15u"GOLD	690-024-334-031
30u"GOLD	690-024-634-031

HYBRID MOUNT (THRU-HOLE AND SURFACE MOUNT)



THIS SERIES FULLY CONFORMS TO THE EUROPEAN UNION DIRECTIVES 2011/65/EU FOR RoHS COMPLIANCY.

USB 3.1 TYPE C, 0.29 DIP FEMALE



YOUR CONNECTION TO QUALITY & SERVICE

EDAC INC  
TORONTO, ONTARIO  
CANADA

THESE DRAWINGS AND SPECIFICATIONS ARE THE PROPERTY OF EDAC INC. AND SHALL NOT BE REPRODUCED OR COPIED OR USED AS THE BASIS FOR THE MANUFACTURE OR SALE OF APPARATUS WITHOUT WRITTEN PERMISSION.

ACAD REFERENCE NO.: 690-024-234-031

DRAWN: N.SONDH DATE: JUN.23/2015

CHECKED: DATE:

PART NUMBER

SEE TABLE

SHEET 1 OF 4

DRAWING NUMBER  
690-024-234-031

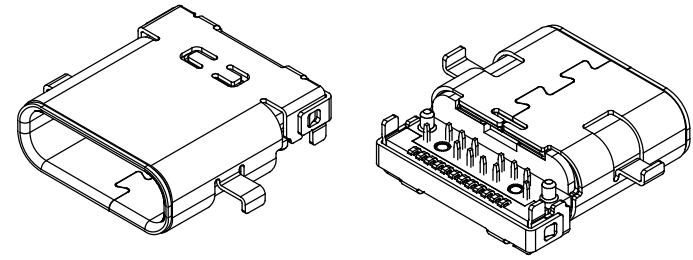
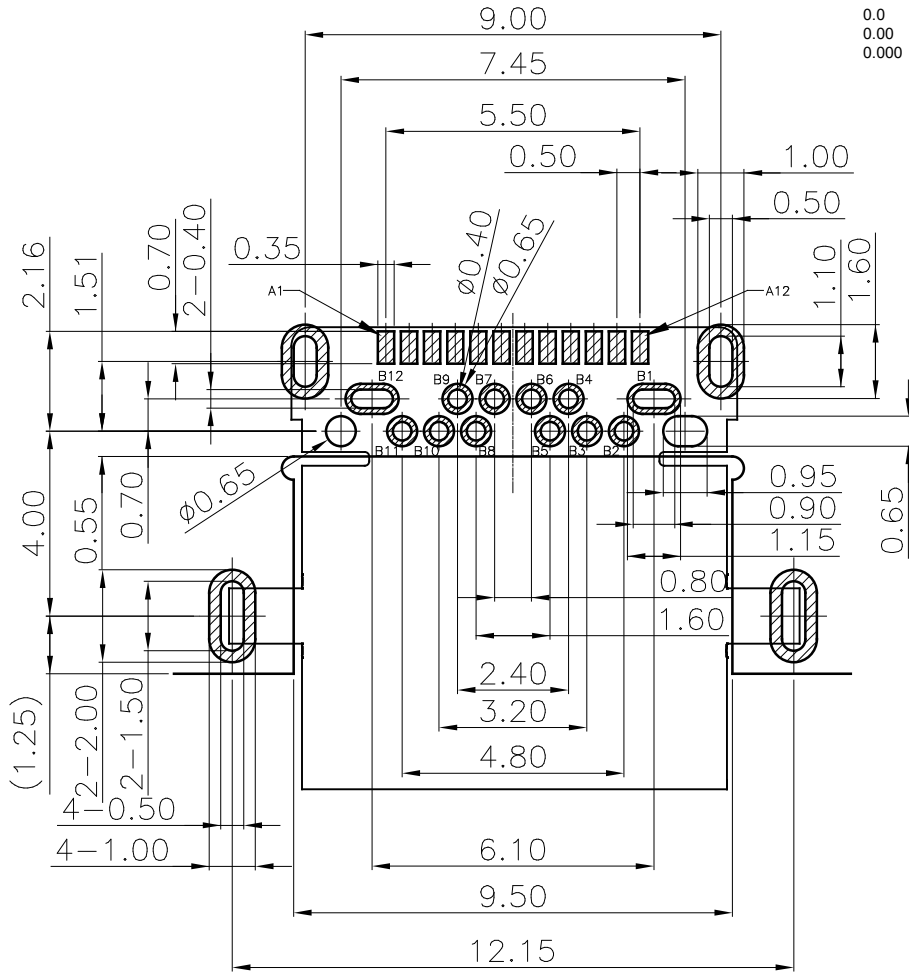
ISSUE  
3

TOLERANCE UNLESS OTHERWISE SPECIFIED IN MM:

0.0 ± 0.38  
0.00 ± 0.25  
0.000 ± 0.05

ANGLE  
0. ±3°  
0.0 ±1°

THIS IS A C.A.D. GENERATED DRAWING  
DO NOT MAKE MANUAL REVISIONS TO MASTER.



USB TYPE-C FULL-FEATURED RECEPTACLE INTERFACE PIN ASSIGNMENTS

PIN	Signal Name	Description	PIN	Signal Name	Description
A1	GND	Ground return	B12	GND	Ground return
A2	SSTXp1	Positive half of first SuperSpeed TX differential pair	B11	SSRXp1	Positive half of first SuperSpeed RX differential pair
A3	SSTXn1	Negative half of first SuperSpeed TX differential pair	B10	SSRXn1	Negative half of first SuperSpeed RX differential pair
A4	VBUS	Bus Power	B9	VBUS	Bus Power
A5	CC1	Configuration Channel	B8	SBU2	Sideband Use (SBU)
A6	Dp1	Positive half of the USB 2.0 differential pair-Position 1	B7	Dn2	Negative half of the USB 2.0 differential pair-Position 2
A7	Dn1	Negative half of the USB 2.0 differential pair-Position 1	B6	Dp2	Positive half of the USB 2.0 differential pair-Position 2
A8	SBU1	Sideband Use(SBU)	B5	CC2	Configuraation Channel
A9	VBUS	Bus Power	B4	VBUS	Bus Power
A10	SSRXn2	Negative half of second SuperSpeed RX differential pair	B3	SSTXn2	Negative half of second SuperSpeed TX differential pair
A11	SSRXp2	Positive half of second SuperSpeed RX differential pair	B2	SSTXp2	Positive half of second SuperSpeed TX differential pair
A12	GND	Ground return	B1	GND	Ground return

RECOMMEND P.C.B LAYOUT(COMPONENT SIDE)

TOLERANCE FOR PCB LAYOUT IS ± 0.05  
KEEP OUT AREA

HYBRID MOUNT (THRU-HOLE AND SURFACE MOUNT)



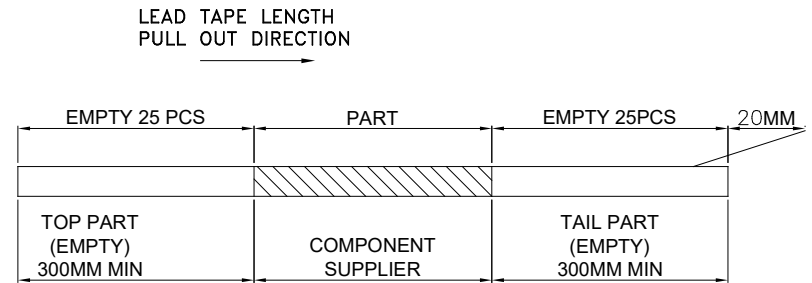
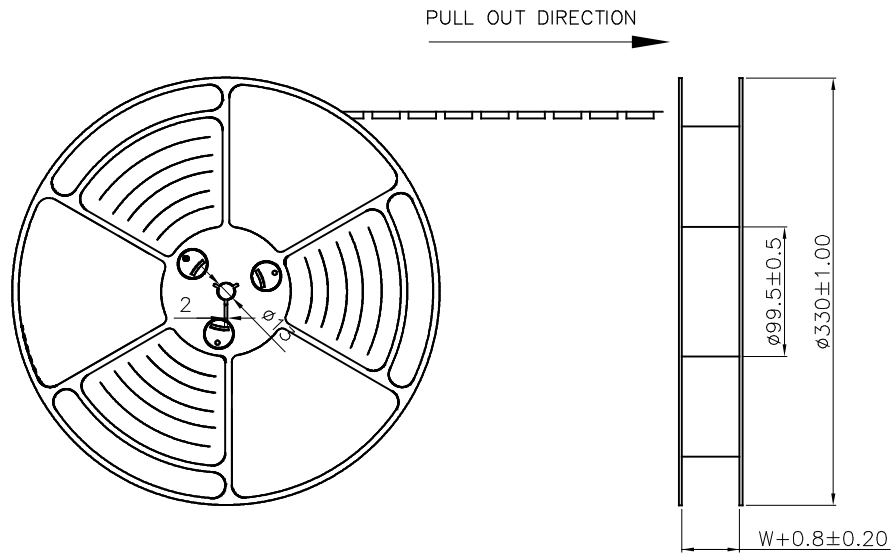
THIS SERIES FULLY CONFORMS TO THE EUROPEAN UNION DIRECTIVES 2011/65/EU FOR RoHS COMPLIANCY.

USB 3.1 TYPE C, 0.29 DIP FEMALE

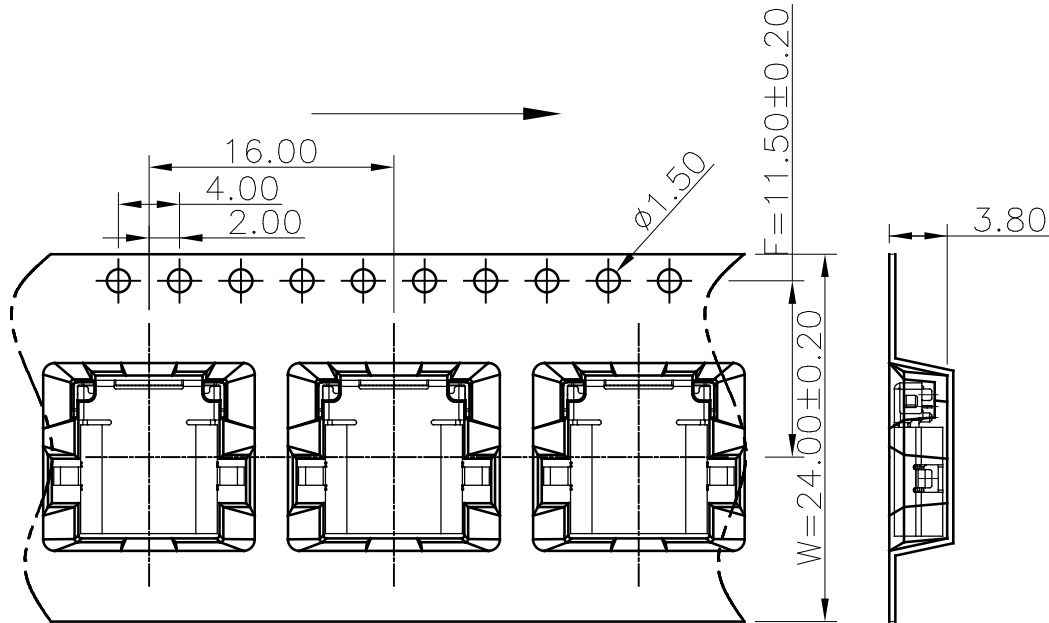
**EDAC** EDAC INC  
TORONTO, ONTARIO  
CANADA  
YOUR CONNECTION TO QUALITY & SERVICE

THESE DRAWINGS AND SPECIFICATIONS ARE THE PROPERTY OF EDAC INC., AND SHALL NOT BE REPRODUCED, OR COPIED OR USED AS THE BASIS FOR THE MANUFACTURE OR SALE OF APPARATUS WITHOUT WRITTEN PERMISSION.

ACAD REFERENCE NO.: 690-024-234-031	
DRAWN: N.SONDH	DATE: JUN.24/2015
CHECKED:	DATE:
PART NUMBER	
<b>SEE TABLE</b>	
SHEET 2 OF 4	
DRAWING NUMBER	ISSUE
<b>690-024-234-031</b>	<b>3</b>



THIS REQUIREMENT SHOULD BE APPLIED AT SHIPMENT:  
PEELING OFF SHOULD NOT BE ALLOWED DURING TRANSPORTATION



THIS SERIES FULLY CONFORMS TO THE EUROPEAN UNION DIRECTIVES 2011/65/EU FOR RoHS COMPLIANCY.

## USB 3.1 TYPE C, 0.29 DIP FEMALE



EDAC INC  
TORONTO, ONTARIO  
CANADA

YOUR CONNECTION TO QUALITY & SERVICE

THESE DRAWINGS AND SPECIFICATIONS ARE THE PROPERTY OF EDAC INC., AND SHALL NOT BE REPRODUCED, OR COPIED OR USED AS THE BASIS FOR THE MANUFACTURE OR SALE OF APPARATUS WITHOUT WRITTEN PERMISSION.

ACAD REFERENCE NO.: 690-024-234-031

DRAWN: N.SONDH

DATE: JUN.24/2015

CHECKED:

DATE:

PART NUMBER

SEE TABLE

SHEET 3 OF 4

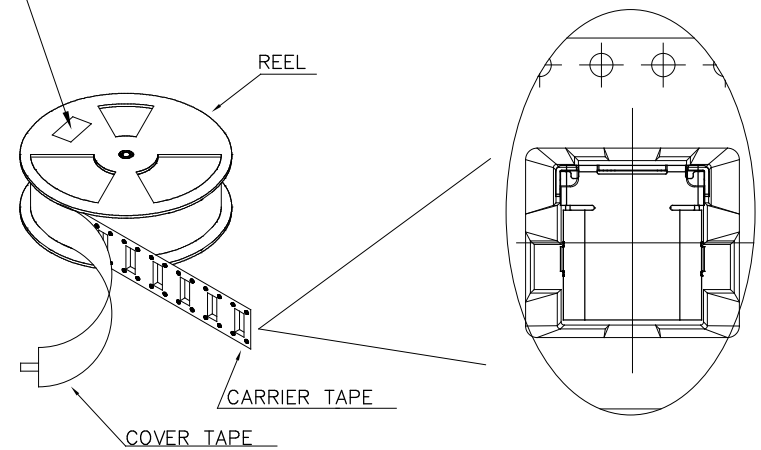
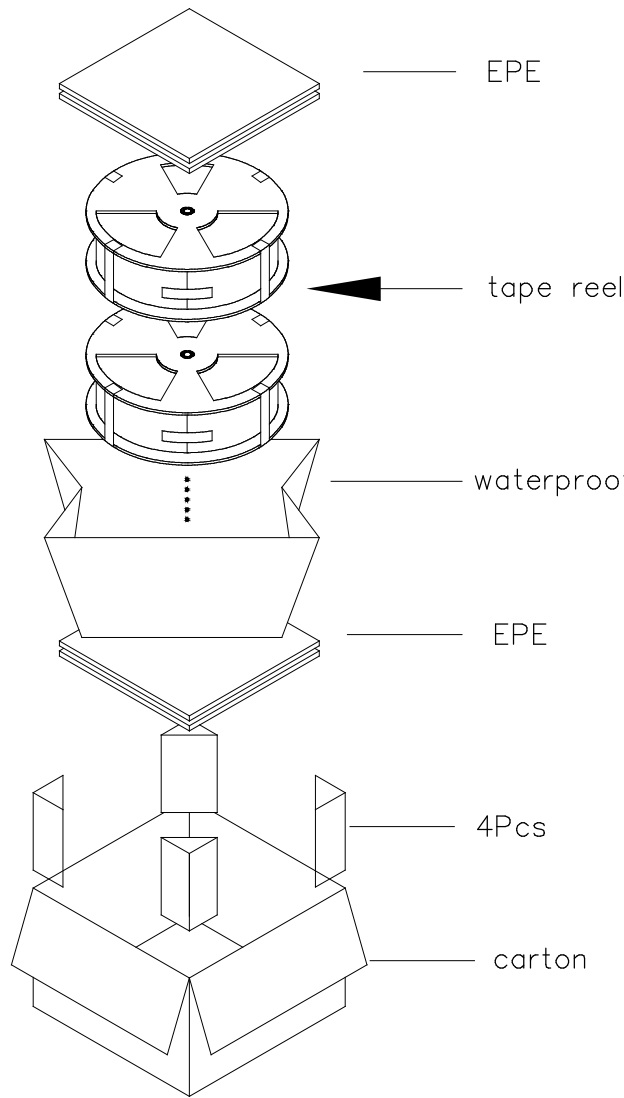
DRAWING NUMBER

690-024-234-031

ISSUE

3

at small positioning hole of the carrier tape side).  
Location of label sticking (label)



**NOTE:**

1. Packing q'ty of each reel & carton as shown in table below.
- Use cover tape to cover and hot melt machine to seal up.
3. Every carton use 2pcs EPE.
4. Put reels in the carton and use adhesive tape to seal up.

(PACKING CAPACITY)			WEIGHT (Kg)		
PCS/REEL	REELS/CARTON	PCS/CARTON	N.W./PCS	N.W./BOX	G.W./BOX
1000	8	8000			



THIS SERIES FULLY CONFORMS TO THE EUROPEAN UNION DIRECTIVES 2011/65/EU FOR RoHS COMPLIANCY.

**USB 3.1 TYPE C, 0.29 DIP FEMALE**

**EDAC INC**  
TORONTO, ONTARIO  
CANADA  
YOUR CONNECTION TO QUALITY & SERVICE

THESE DRAWINGS AND SPECIFICATIONS ARE THE PROPERTY OF EDAC INC., AND SHALL NOT BE REPRODUCED, OR COPIED OR USED AS THE BASIS FOR THE MANUFACTURE OR SALE OF APPARATUS WITHOUT WRITTEN PERMISSION.

ACAD REFERENCE NO.: 690-024-234-031	
DRAWN: N.SONDH	DATE: JUN.24/2015
CHECKED:	DATE:
PART NUMBER	
<b>SEE TABLE</b>	
SHEET 4 OF 4	
DRAWING NUMBER	ISSUE
<b>690-024-234-031</b>	3