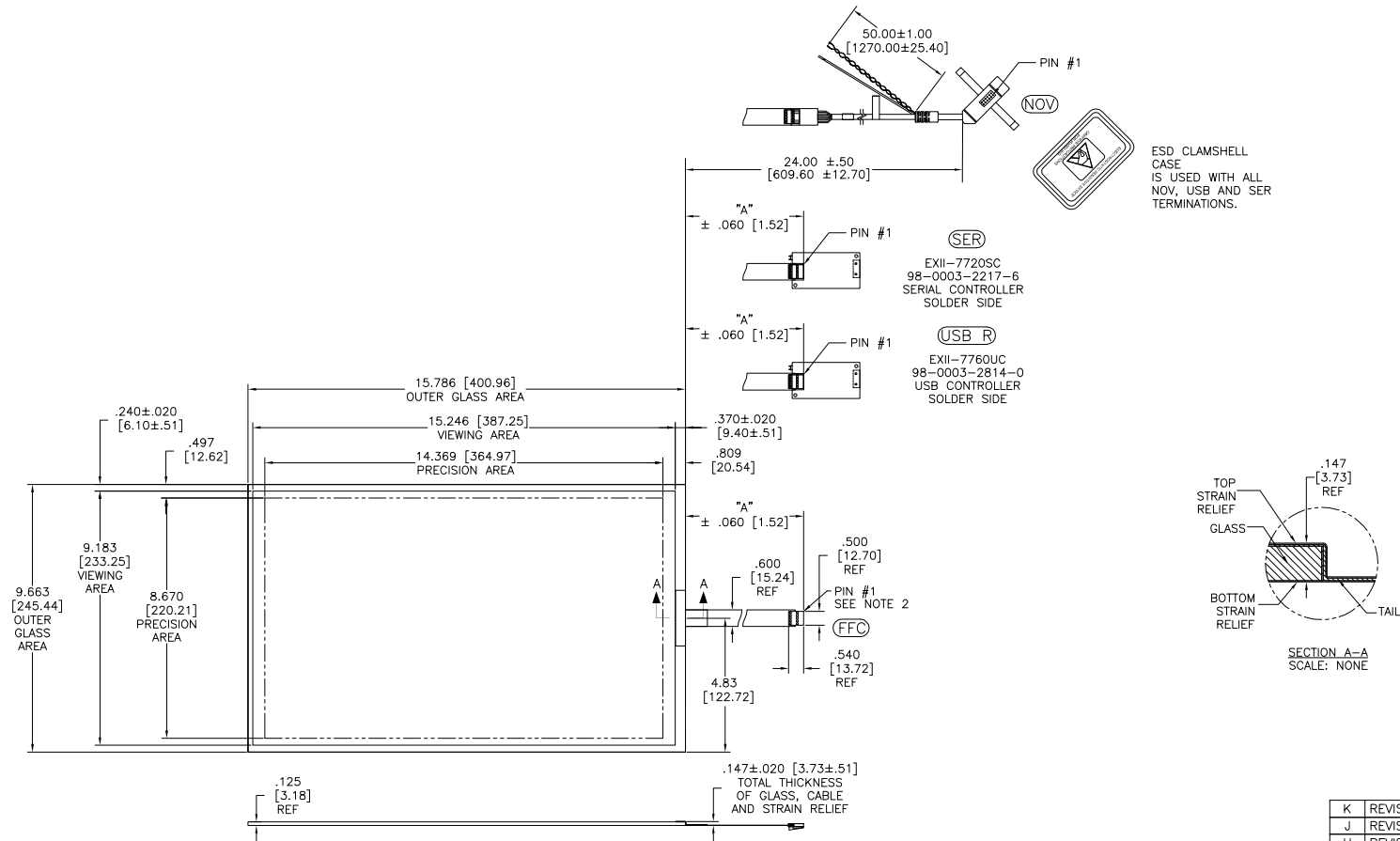


OGA DIAGONAL: 18.51 [470.12]  
 VA DIAGONAL: 17.80 [452.07]  
 PA DIAGONAL: 16.82 [427.20]

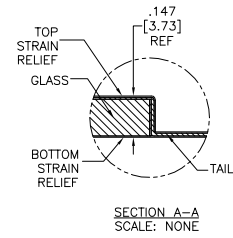
TOP LEVEL NUMBER	US NUMBER	TYPE	DIM "A" (TOTAL GLASS TO CONNECTOR)	A/G FINISH	PROD SPEC
17-9241-205	98-0003-3351-2	FFC	8.00" [203.20]	AG500	23655
17-9241-227	98-0003-2715-9	SER	8.00" [203.20]	AG500	23655
17-9241-206	98-0003-3045-0	NOV	SEE DWG	AG500	23655
17-9241-226	98-0003-3129-2	USB R	8.00" [203.20]	AG500	23655
N/A	98-0003-4227-3	USB R	8.00" [203.20]	WC100	34523
N/A	98-0003-4229-9	SER	8.00" [203.20]	WC100	34523
N/A	98-1100-0097-7	FFC	8.00" [203.20]	WC100	34523



ESD CLAMSHELL CASE IS USED WITH ALL NOV, USB AND SER TERMINATIONS.

(SER)  
 EXII-7720SC  
 98-0003-2217-6  
 SERIAL CONTROLLER  
 SOLDER SIDE

(USB R)  
 EXII-7760UC  
 98-0003-2814-0  
 USB CONTROLLER  
 SOLDER SIDE



REV	CHANGE NOTICE	DATE	DRW
K	REVISED PER CO 036265	4/13	SB
J	REVISED PER CO 036100	2/13	SEB
H	REVISED PER CO 035587	10/12	SB

- NOTES:
1. WEIGHT OF GLASS IN GRAMS: 781±10%
  2. NICOMATIC HOUSING P/N: 0L05  
 NICOMATIC RECEPTACLES (PINS) MATTE TIN PLATED P/N: 14106-12  
 HOUSING ORIENTED WITH LATCH DOWN

PINOUT	
1	UL
2	UR
3	SHLD
4	LR
5	LL

UNITS INCHES [MM]

TOLERANCES UNLESS OTHERWISE SPECIFIED

.X ± .03 [.76]  
 .XX ± .015 [.38]  
 ANGLES ±1°

THIRD ANGLE PROJECTION

DO NOT SCALE DRAWING

SCALE 1 = 1

**3M** 3M TOUCH SYSTEMS  
 METHUEN, MA  
 USA

© COPYRIGHT 2004  
 THIS DOCUMENT IS COPYRIGHTED PROPERTY OF THE 3M COMPANY AND MAY NOT BE REPRODUCED WITHOUT 3M WRITTEN PERMISSION OR USED OR DISCLOSED FOR OTHER THAN 3M AUTHORIZED PURPOSES.

DRAWN MTD 9/7/06

TITLE

MARKETING DRAWING  
 SCT32NN 17.80"

CAD FORMAT AUTOCAD SHEET 1 OF 1

SIZE C DOCUMENT NO. TSD-32734 REV K