

Technical specification:

Rated voltage: 4pos 5pos
IEC 61076-2-101 250 V 60 V

Current rating: 4 A at 40°C
IEC 61076-2-101

Insulation resistance: >=100 MΩ
IEC 60512

Pollution degree: 3/2
IEC 60664-1

Degree of protection: IP 67, in mated condition
IEC 60529

Temperature range: -30°C ... +85°C
EN 60512-11-10
-40°C
EN 60512-11-4
-40°C ... +85°C

Mating cycles: >=100
IEC 60512-9a

Materials:

Contact: CuZn, Ni b / Au 0,2 gal.

Contact carrier: PA GF, UL 94 V-0

Sealing: FPM / NBR

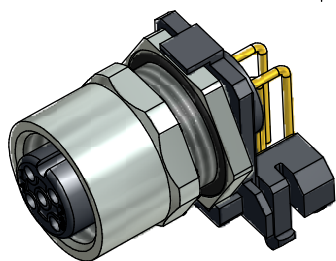
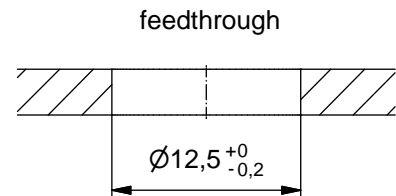
Socket housing: CuZn, nickel plated

Shroud: spring steel, nickel plated

Installation specification:

recommended torque: 0,8-1 Nm

Conec installation tool: Torque wrench: 36-000200
Insert across flats 14: 36-000370
Insert across flats 15: 36-000320

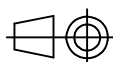


Part no:	Description:	Pos	Note:
43-01196	SAL - 12 - FKHW4	4	
43-01197	SAL - 12S - FKHW4	4	with shroud
43-01198	SAL - 12 - FKHW5	5	
43-01199	SAL - 12S - FKHW5	5	with shroud

DO NOT ALTER CAD DRAWING BY HAND

RoHS & REACH compliant

Index: d 26.08.13 MG Ä4884
Data sheet revised, width across flats changed, installation specification added



dim. in mm

	date	name
drawn	17.10.07	Fromm
appd.	29.02.08	W.Schmidt

title:

Female socket M12x1 angled, backmounting, dip solder

dwg no:

43K1A511

part no:

general tolerance: 0 ± 0,50mm
0,0 ± 0,25mm
0,00 ± 0,10mm
* ± 1,5°



THIS DRAWING MAY NOT BE COPIED OR REPRODUCED IN ANY WAY, AND MAY NOT BE PASSED ON TO A THIRD PARTY WITHOUT WRITTEN PERMISSION. OWNERSHIP AND COPYRIGHT OF CONEC GmbH