

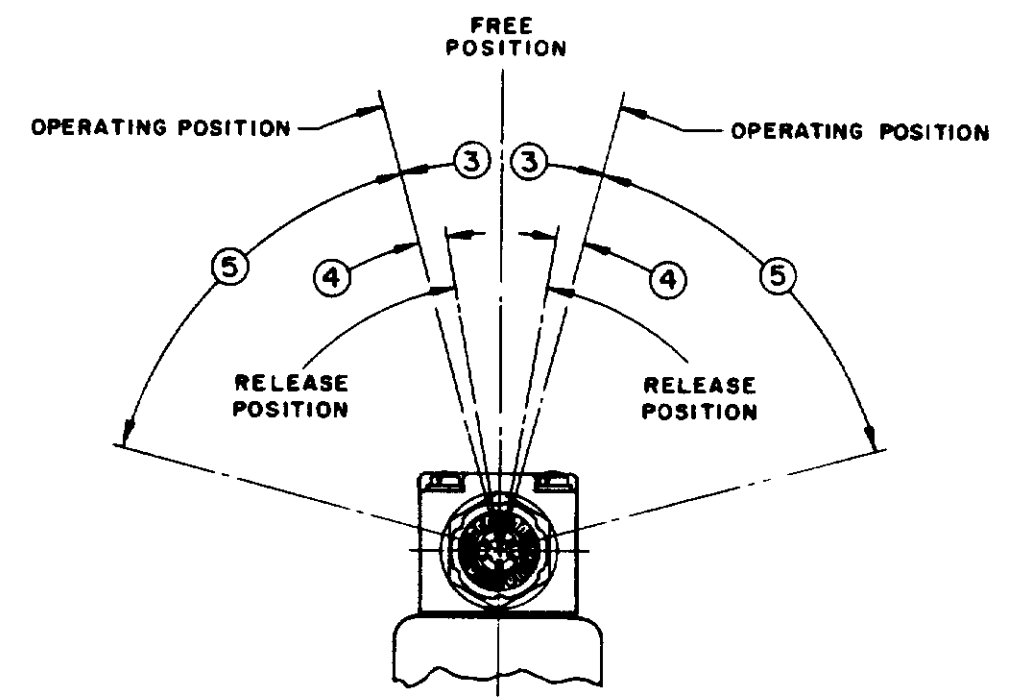
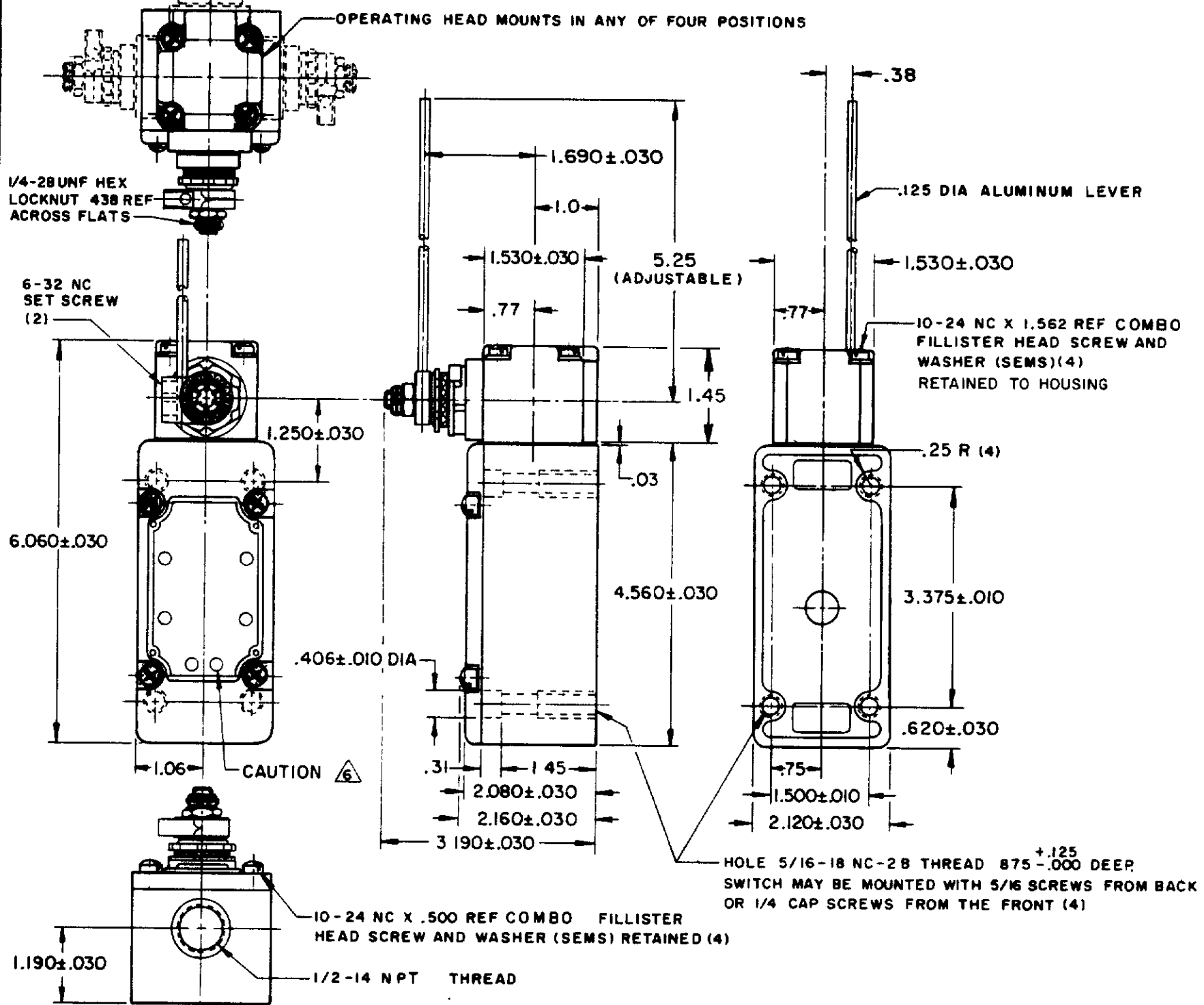
MICRO SWITCH

SWITCH - ENCLOSED

CATALOG LISTING
151ML10-E1

FED. MFR. CODE 91929

M 151ML10-E1
 DRAWING NUMBER
 ISSUE X 89
 REVISIONS
 A COS2194
 J A P 23 SEPT 85
 B D056367
 JAS 12 NOV 85
 C 855051C
 T A D 5 JAN 86
 D CO 63739
 D J S 19 JUN 86
 E D0742 27
 G J W 23 FEB 87
 H A P 23 SEPT 83
 I A P 23 SEPT 83
 J A P 23 SEPT 83
 K A P 23 SEPT 83
 L A P 23 SEPT 83
 M A P 23 SEPT 83
 N A P 23 SEPT 83
 O A P 23 SEPT 83
 P A P 23 SEPT 83
 Q A P 23 SEPT 83
 R A P 23 SEPT 83
 S A P 23 SEPT 83
 T A P 23 SEPT 83
 U A P 23 SEPT 83
 V A P 23 SEPT 83
 W A P 23 SEPT 83
 X A P 23 SEPT 83
 Y A P 23 SEPT 83
 Z A P 23 SEPT 83
 FO-80378-003



- NOTES**
- IT IS ESSENTIAL THAT THE CONDUIT OPENING BE PROPERLY SEALED IN ORDER TO MAINTAIN THE EXPLOSION PROOF PROPERTIES
 - SWITCH IS ASSEMBLED FOR ACTUATION IN CLOCKWISE DIRECTION
 - TO CONVERT SWITCH FOR ACTUATION IN THE COUNTER-CLOCKWISE DIRECTION ONLY, REMOVE THE HEAD AND SLIDE THE CAM TOWARD THE REAR OF THE HEAD SUFFICIENTLY TO DISENGAGE FROM THE FLATS ON THE SHAFT. ROTATE THE CAM 180° AND RE-ENGAGE THE CAM WITH THE FLATS ON THE SHAFT
 - SHAFT MAY BE ADJUSTED TO ACTUATE THE SWITCH IN THE CLOCKWISE DIRECTION ONLY OR THE COUNTER-CLOCKWISE DIRECTION ONLY
 - IN ORDER TO MAINTAIN THE EXPLOSION PROOF PROPERTIES OF THIS UNIT DO NOT OBSTRUCT THE HOLES IN THE COVER PLATE
 - LISTED BY UNDERWRITERS LABORATORY, INC. FOR USE IN CLASS I, GROUPS C AND D VAPOR-AIR ATMOSPHERES, AND CLASS 2 GROUPS E, F AND G, DUST-AIR ATMOSPHERES
 - LEVER MAY BE POSITIVELY LOCKED AT INTERVALS OF APPROX 0.4° (870 POSITIONS)

THIS DRAWING COVERS A PROPRIETARY ITEM AND IS THE PROPERTY OF MICRO SWITCH, A DIVISION OF MINNEAPOLIS-HONEYWELL REGULATOR CO. THIS DRAWING IS NOT TO BE COPIED OR USED WITHOUT THE APPROVAL OF MICRO SWITCH

CHARACTERISTICS	ELECTRICAL DATA	SCALE 1/2 TO 1
OPERATING FORCE ----- 5 OZ MAX	CONTACT ARRANGEMENT TWO CIRCUIT DOUBLE THROW DOUBLE BREAK	DO NOT SCALE PRINT
FULL OVERTRAVEL FORCE ----- 7 OZ MAX	10A-120, 240, OR 480 VAC 1/2 HP-120 VAC, 1 HP-240 VAC 0.8 A-115 VDC, 0.4 A-230 VDC PILOT DUTY: 72 OVA-HEAVY DUTY 600 VAC MAX	UNLESS OTHERWISE SPECIFIED
RELEASE FORCE ----- 3/4 OZ MIN		DIMENSIONS ARE IN INCHES
PRETRAVEL ----- (3) 15° MAX		TOLERANCES ARE:
DIFFERENTIAL TRAVEL ----- (4) 7° MAX		ONE PLACE (.0) ± .030
OVERTRAVEL ----- (5) 60° MIN		TWO PLACE (.00) ± .015
SWITCH-REPLACEMENT ----- 1MNS	THREE PLACE (.000) ± .008	
	ANGLES ±	WEIGHT

