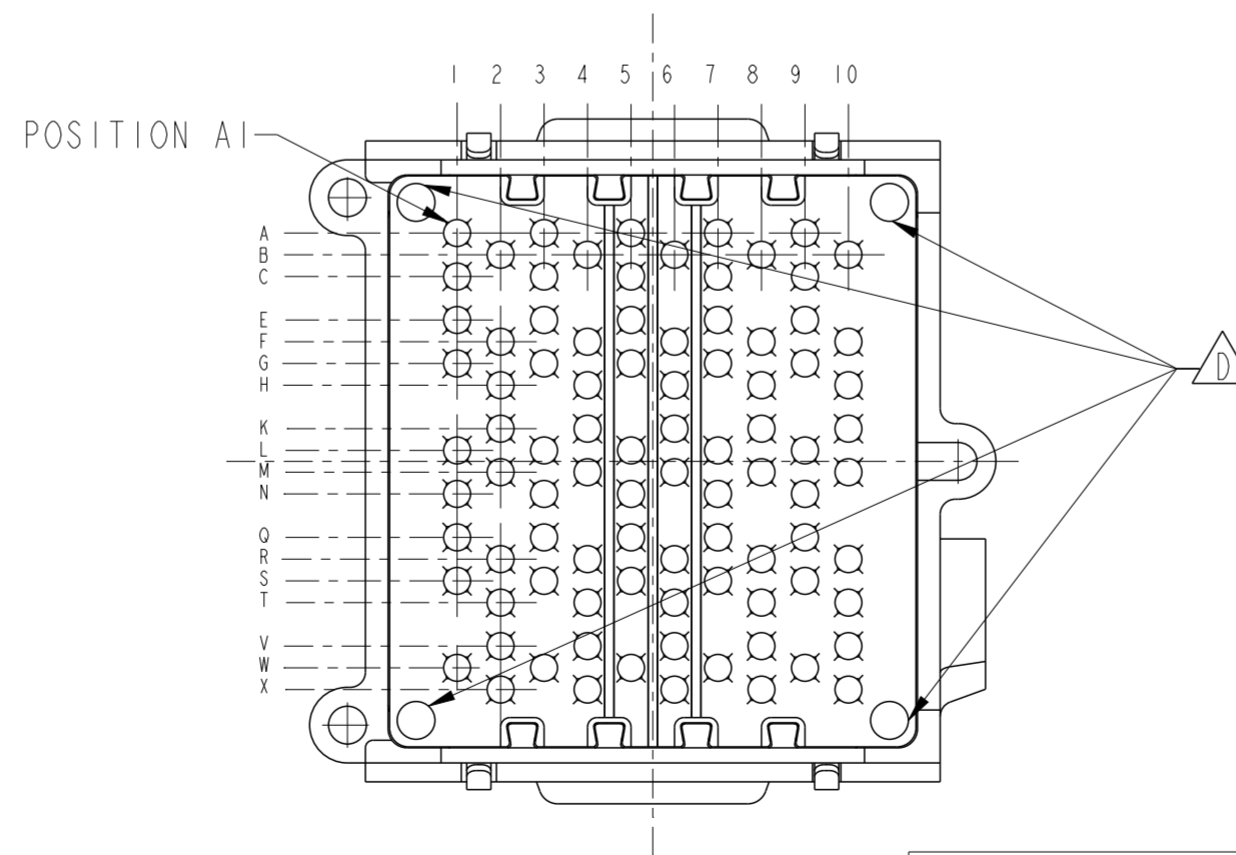
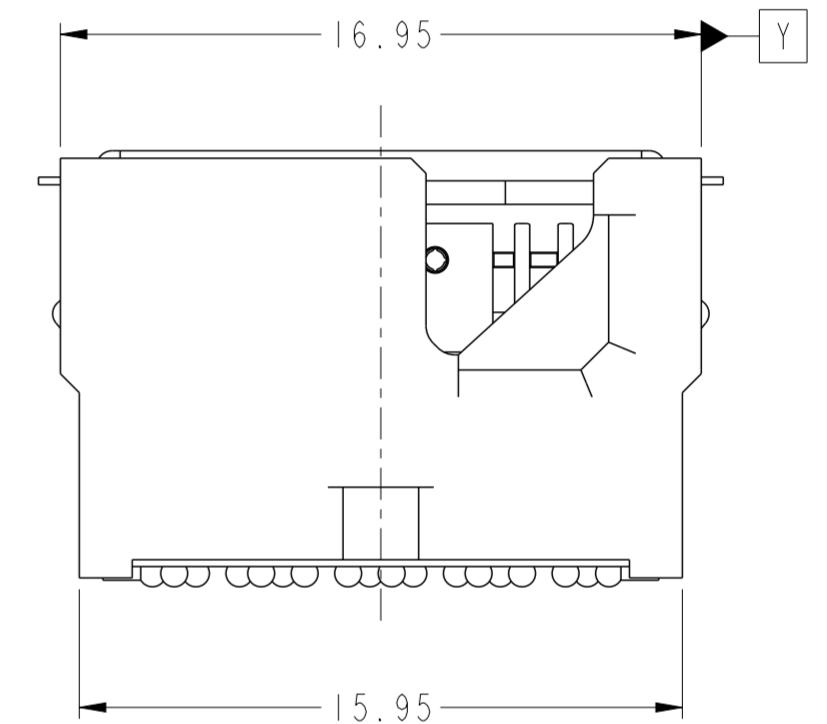
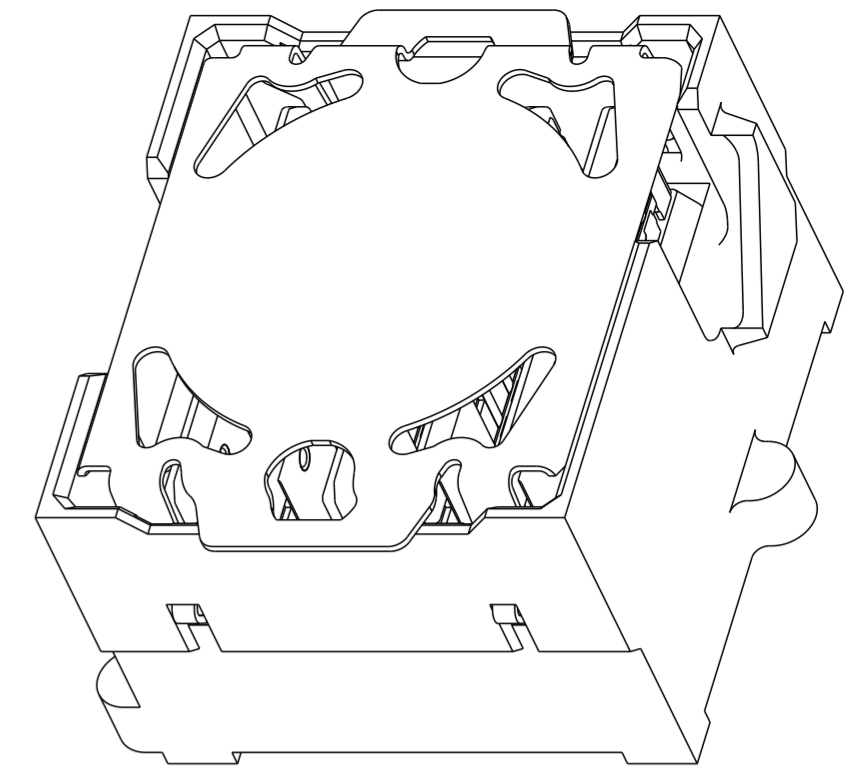
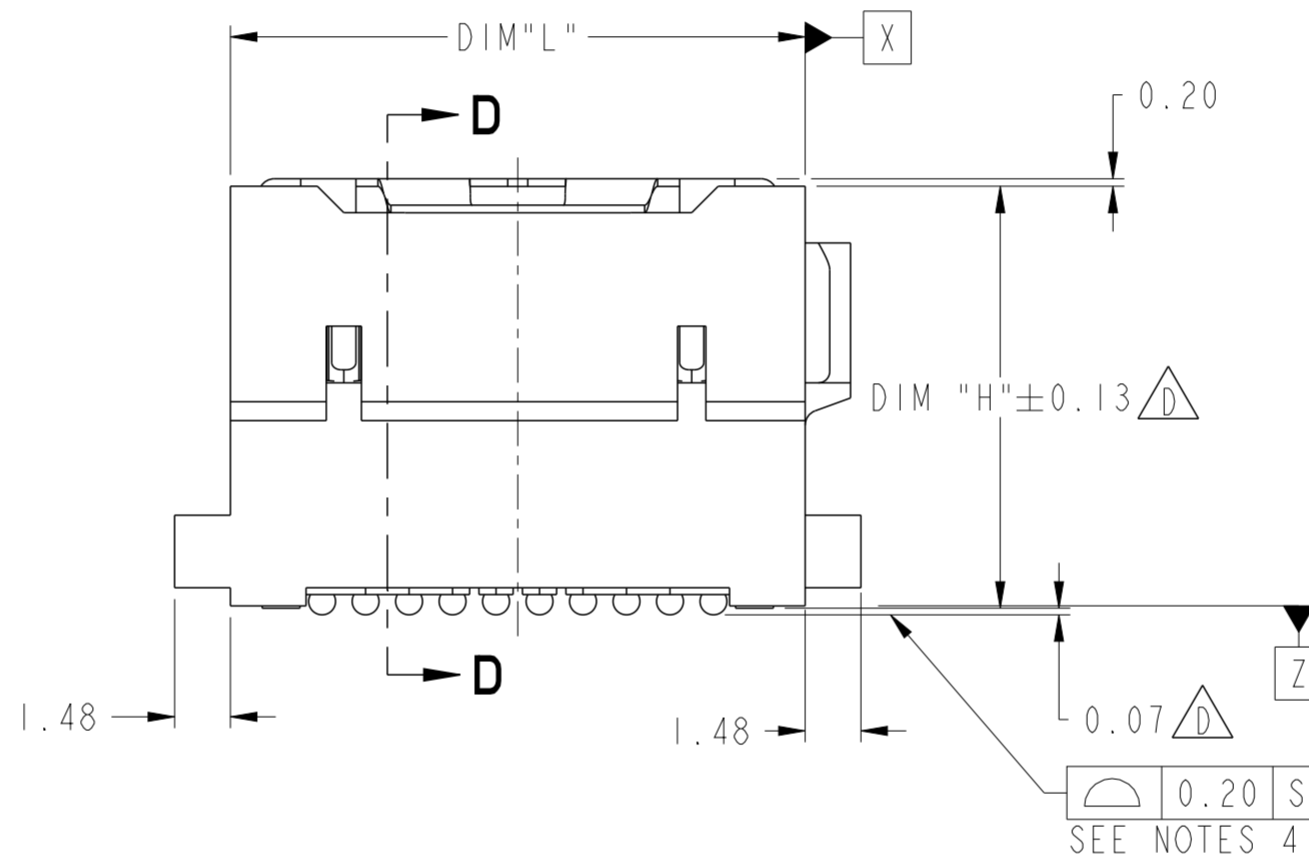
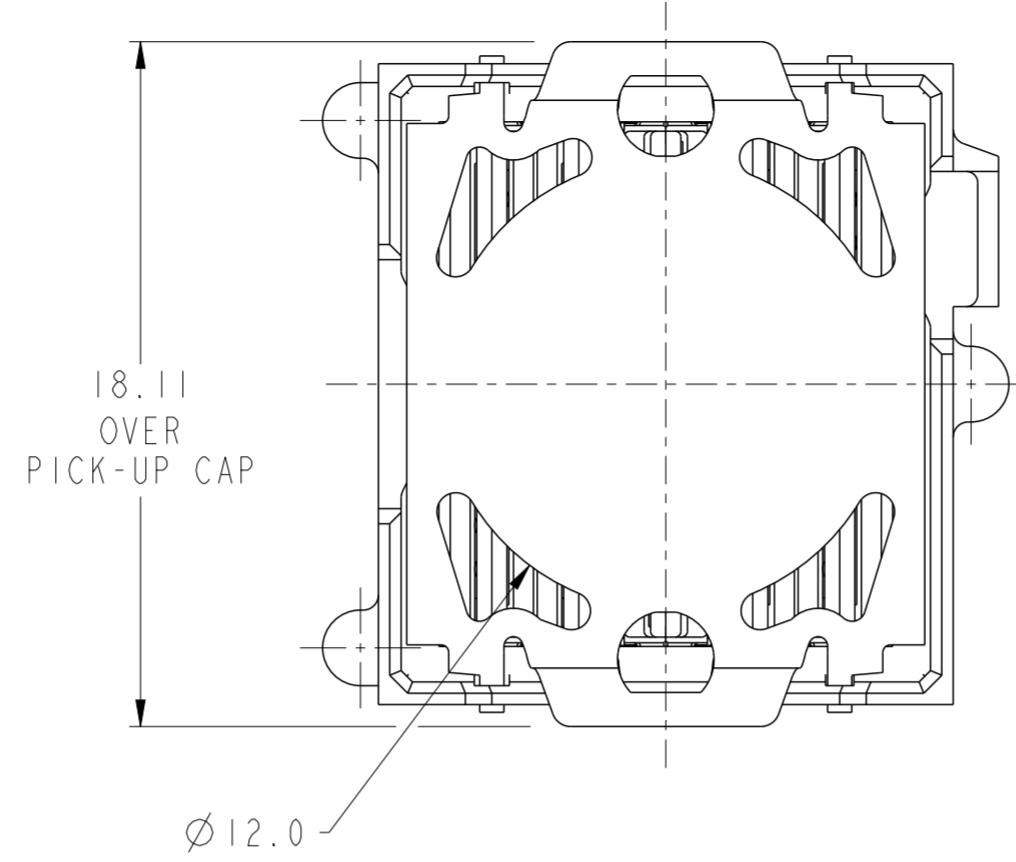
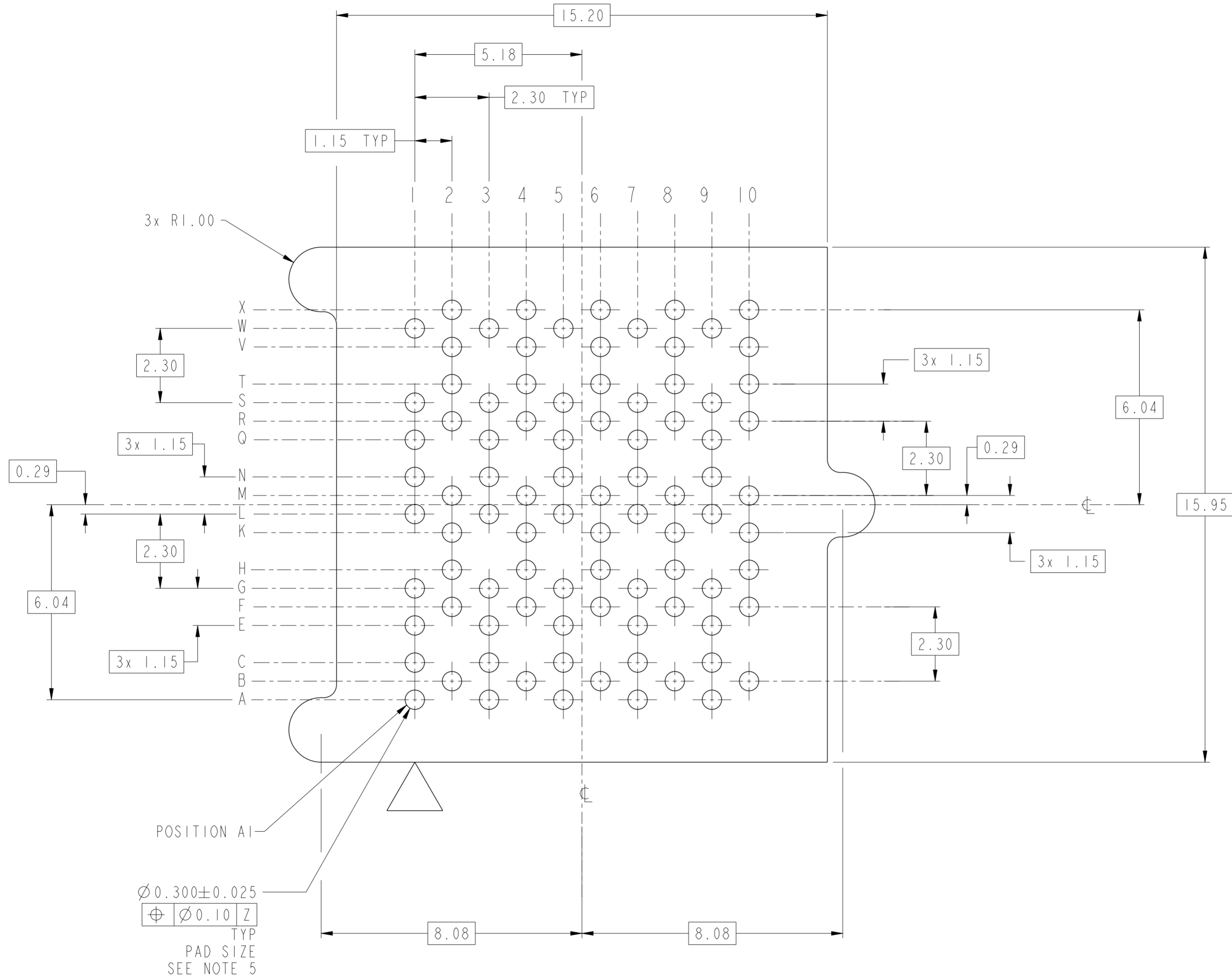


SECTION D-D
SCALE 5:1



5 IMLA SHOWN

spec ref	-	dr	Len Espenshade	2012/07/03	projection	MM	size	A2	scale	5:1										
tolerance std	YS14.5	eng	Michael Song	2015/11/16			ecn no	ELX-DG-22388-1												
TOLERANCES UNLESS OTHERWISE SPECIFIED		chr	Zhen Luo	2015/11/17			rel level	Released												
surface	<table border="1"> <tr> <td>linear</td> <td>0.X</td> <td>±0.3</td> </tr> <tr> <td></td> <td>0.XX</td> <td>±0.10</td> </tr> <tr> <td></td> <td>0.XXX</td> <td>±0.05</td> </tr> <tr> <td>angular</td> <td>0°</td> <td>±2°</td> </tr> </table>	linear	0.X	±0.3				0.XX	±0.10		0.XXX	±0.05	angular	0°	±2°	app	Pai-Ming Zheng	2015/11/17	product family	InfinX
linear	0.X	±0.3																		
	0.XX	±0.10																		
	0.XXX	±0.05																		
angular	0°	±2°																		
YS14.5		www.fci.com	cat. no.	SEE P/N TABLE	Product - Customer Drw	sheet 1 of 4	dwg no	10120260		rev	D									



POSITION A1
 $\varnothing 0.300 \pm 0.025$
 $\varnothing 0.10$ Z
 TYP
 PAD SIZE
 SEE NOTE 5

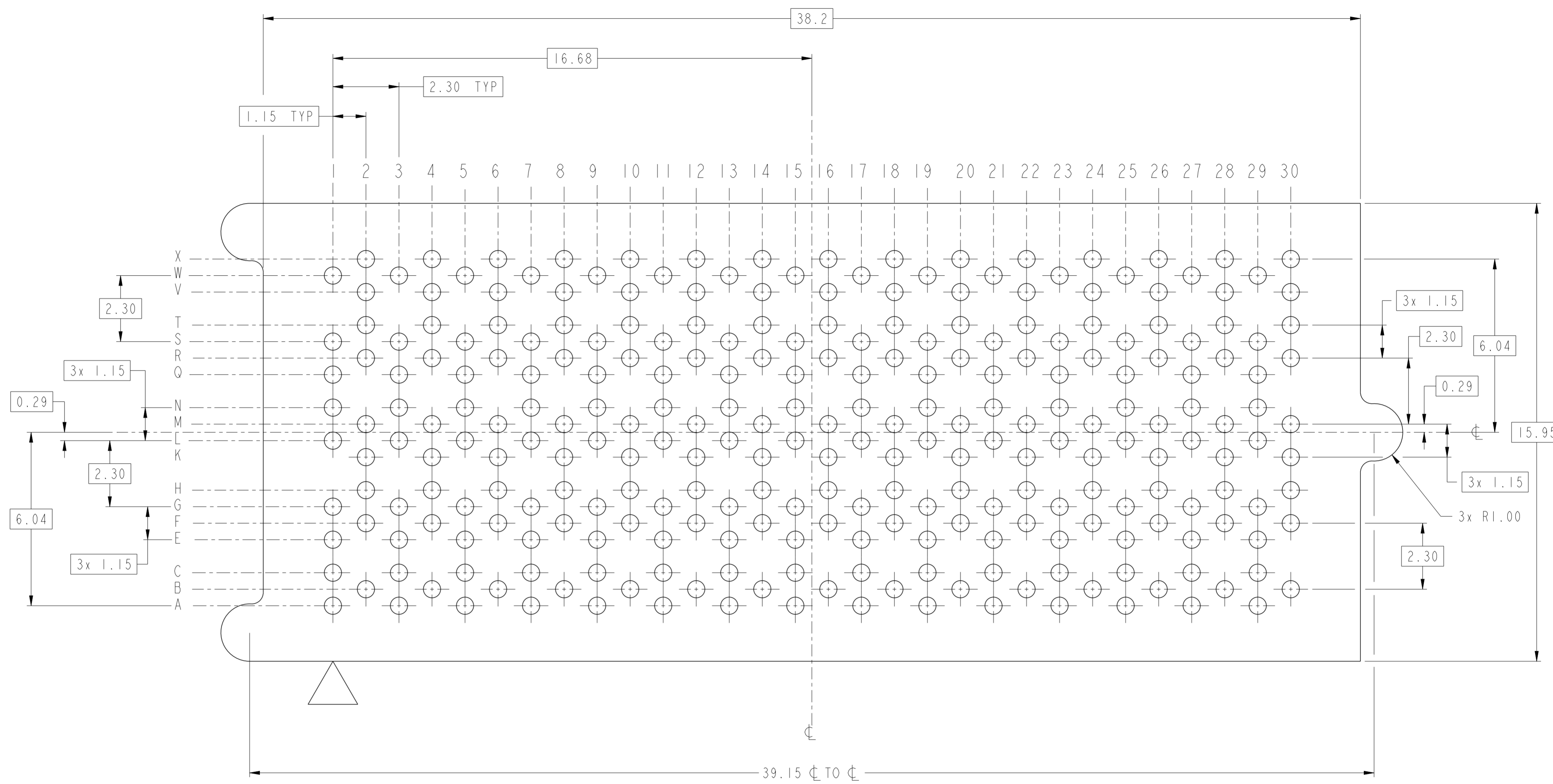
BOARD LAYOUT 5 IMLA CONNECTOR
SEE NOTE 4
SCALE 10:1

spec ref	-	dr	Len Espenshade	2012/07/03	projection	MM	size	A2	scale	5:1	
tolerance std	YS14.5	eng	Michael Song	2015/11/16			ecn no	ELX-DG-22388-1			
TOLERANCES UNLESS OTHERWISE SPECIFIED		chr	Zhen Luo	2015/11/17			rel level	Released			
surface	YS14.5	appr	Pai-Ming Zheng	2015/11/17			product family	InfinX			
linear	0.X	±0.3			PLUG ASSEMBLY, 4-PAIR INFINX		dwg no	10120260			
	0.XX	±0.10					rev	D			
	0.XXX	±0.05					Product - Customer Drw				
angular	0°	±2°	www.fci.com	cat. no.	sheet 2 of 4						

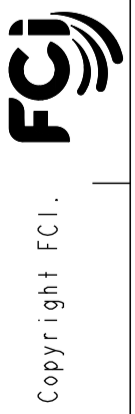


Copyright FCI.

A
B
C
D
E
F



BOARD LAYOUT 15 IMLA CONNECTOR
SEE NOTE 4
SCALE 10:1



spec ref	-	dr	Len Espenshade	2012/07/03	projection	MM	size	A2	scale	1:1
tolerance std	YS14.5	eng	Michael Song	2015/11/16			ecn no	ELX-DG-22388-1		
TOLERANCES UNLESS OTHERWISE SPECIFIED		chr	Zhen Luo	2015/11/17			rel level	Released		
surface	YS14.5	appr	Pei-Ming Zheng	2015/11/17			product family	-		
linear	0.X ±0.3	FCI			title	PLUG ASSEMBLY, 4-PAIR			dwg no	10120260
	0.XX ±0.10	www.fci.com			cat. no.	-			Product - Customer Drw	sheet 3 of 4
	0.XXX ±0.05								rev	D
angular	0° ±2°									

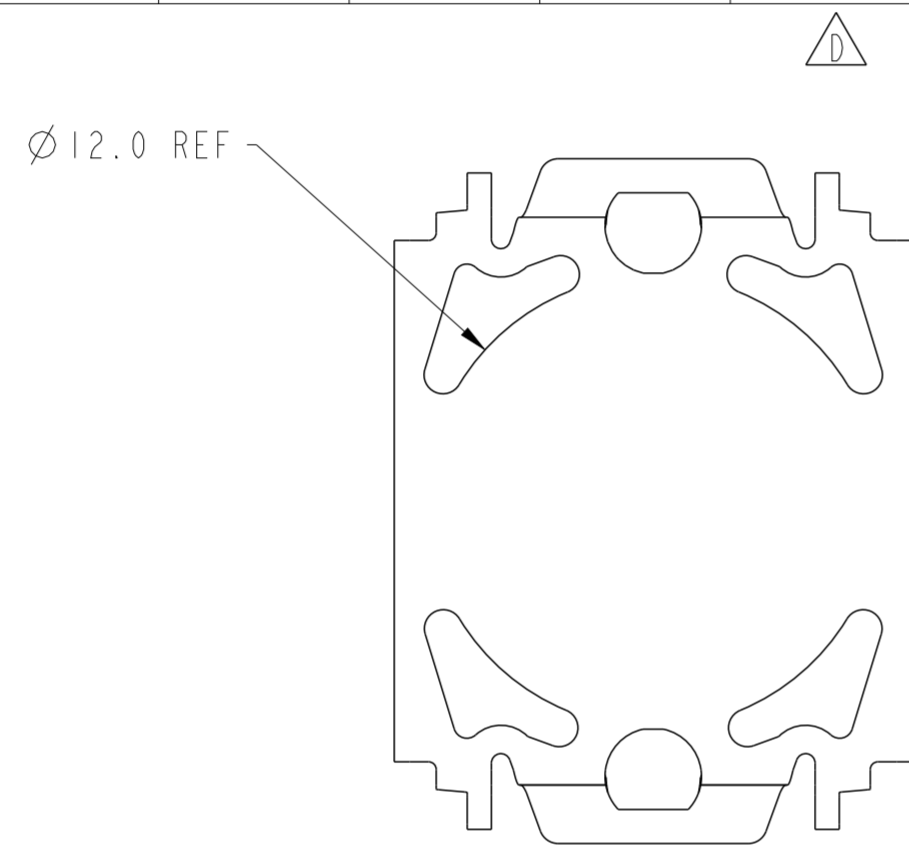
PDS: Rev :D

STATUS:Released

Printed: Nov 18, 2015

CURRENTLY TOOLED AND AVAILABLE PART NUMBERS

PART NUMBER	HEIGHT	COLUMNS	DAMPER	Ω	RoHS	DIM "H"	DIM "L"	PLATING SPEC.
10120260-110-102LF	6mm	5	NO	85	YES	11.2	15.20	0.76um(30u")MIN Au with lube
10120260-111-102LF	6mm	5	YES	85	YES	11.2	15.20	
10120260-130-102LF	6mm	15	NO	85	YES	11.2	38.20	
10120260-131-102LF	6mm	15	YES	85	YES	11.2	38.20	0.76um(30u")MIN GXT
10120260-110-202LF	6mm	5	NO	85	YES	11.2	15.20	
10120260-111-202LF	6mm	5	YES	85	YES	11.2	15.20	
10120260-130-202LF	6mm	15	NO	85	YES	11.2	38.20	
10120260-131-202LF	6mm	15	YES	85	YES	11.2	38.20	

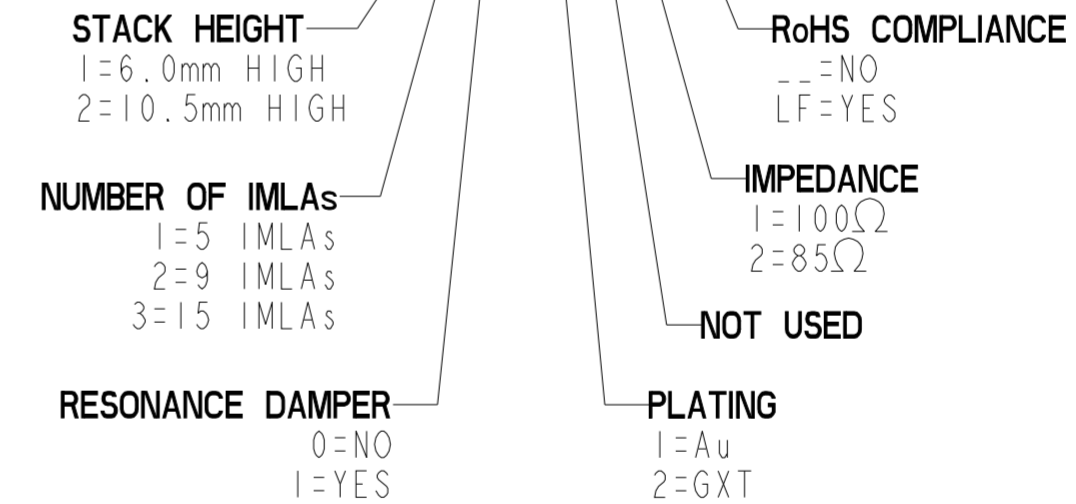


FLAT AREA PICK-UP CAP

NOTES:

- MATERIAL:
HOUSING/WAFERS: HIGH TEMPERATURE THERMOPLASTIC (LCP)
VACUUM CAP: STAINLESS STEEL
CONTACTS: COPPER ALLOY
PLATING (CONTACT): GOLD OR GXT, CAPABLE OF MEETING THE REQUIREMENTS OF FCI PRODUCT SPECIFICATION GS-12-1061
SOLDER BALL: (SEE TABLE) LEADFREE 95.5 Sn/4Ag/0.5Cu
- SOLDER SPHERES WILL NOT BE A PERFECT SPHERICAL SHAPE DUE TO REFLOW ATTACHMENT,
- PRODUCT SPECIFICATION: GS-12-1061
APPLICATION SPECIFICATION: GS-20-0365
- THE SEATING PLANE (DATUM "S") IS THE SURFACE ON WHICH THE THREE LOWEST SOLDER BALLS WOULD REST. COPLANARITY IS THE MEASUREMENT OF THE OTHER SOLDER BALL APICES TO THIS SURFACE. THE APICES OF ALL BALLS MUST BE WITHIN THE SPECIFIED LIMITS.
- SPECIFIED POSITIONAL TOLERANCE DEFINES PAD TO PAD LOCATION WITHIN LAND PATTERN. POSITION TOLERANCE OF LAND PATTERN TO FUDICIAL MARKS OR PCB DATUMS SHALL BE DEFINED BY CUSTOMER.
- THIS PRODUCT PART NUMBER LF MEETS THE REQUIREMENTS OF THE EUROPEAN UNION DIRECTIVE OF RESTRICTIONS FOR HAZARDOUS SUBSTANCES (DIRECTIVE 2002/95/EC) AS DESCRIBED IN GS-47-0004.
- SEE TABLE ON SHEET 3 FOR AVAILABLE PART NUMBERS

P/N CODE FORMAT: **10120260 - 111 - 101 LF**



- PACKAGED IN TRAYS.
- THE HOUSING WILL WITHSTAND EXPOSURE TO 260 °C PEAK TEMPERATURE FOR 40 SECONDS IN A CONVECTION, INFRA-RED OR VAPOR PHASE REFLOW OVEN.
- A **D** SYMBOL WILL BE NEXT TO ANY DIMENSION, VIEW, OR NOTE WHICH HAS BEEN MODIFIED WITH THE CURRENT DRAWING REVISION.

spec ref	-	dr	Len Espenshade	2012/07/03	projection	MM	size	A2	scale	5:1	
tolerance std	YS14.5	eng	Michael Song	2015/11/16			ecn no	ELX-DG-22388-1	rel level	Released	
surface	linear 0.X ±0.3 0.XX ±0.10 0.XXX ±0.05	chr	Zhen Luo	2015/11/17			product family	InfinX		rel level	Released
		appr	Pei-Ming Zheng	2015/11/17			title	PLUG ASSEMBLY, 4-PAIR		cat. no.	10120260
YS14.5	angular	0° ±2°	www.fci.com		Product - Customer Drw		sheet 4 of 4				