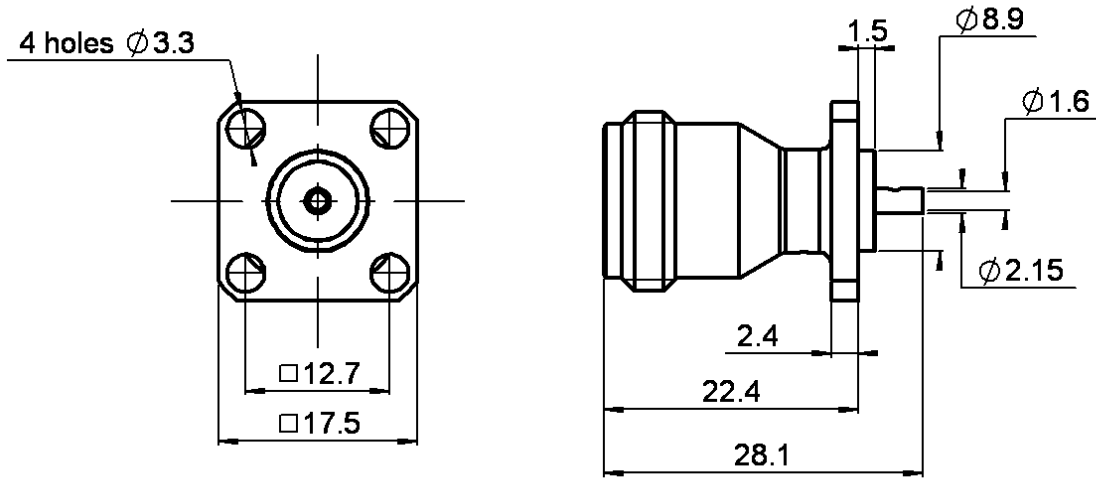


**17.5 MM SQUARE FLANGE RECEPTACLE**

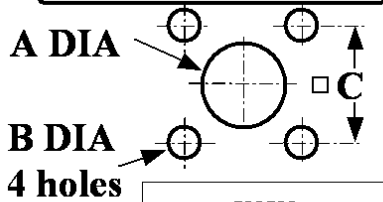
**R161.410.000**

**PACKAGING BY 50**

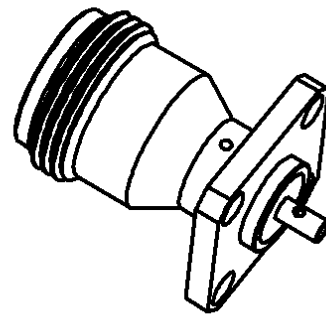
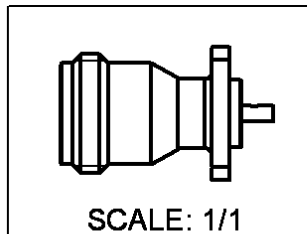
Series : N



**PANEL CUT OUT**



	mm	
	Maxi	mini
<b>A</b>	<b>9.4</b>	<b>9.2</b>
<b>B</b>	<b>3.3</b>	<b>3.2</b>
<b>C</b>	<b>12.8</b>	<b>12.6</b>



All dimensions are in mm.

COMPONENTS	MATERIALS	PLATINGS (µm)
BODY	BRASS	BBR 2
CENTER CONTACT	BRONZE	GOLD 0.5 OVER NICKEL 2
OUTER CONTACT		
INSULATOR	PTFE	
GASKET		
OTHERS PARTS		
-	-	-
-	-	-

Issue : 0218 M

In the effort to improve our products, we reserve the right to make changes judged to be necessary.



**17.5 MM SQUARE FLANGE RECEPTACLE**

**R161.410.000**

**PACKAGING BY 50**

Series : N

**PACKAGING**

**SPECIFICATION**

Standard	Unit	Other
<b>50</b>	<b>'W' option</b>	<b>Contact us</b>

**ELECTRICAL CHARACTERISTICS**

**ENVIRONMENTAL**

Impedance		<b>50</b> Ω
Frequency		<b>0-11</b> GHz
VSWR	<b>1.4* +</b>	<b>0.000</b> x F(GHz) Maxi
Insertion loss		<b>0.15</b> √F(GHz) dB Maxi
RF leakage	- (	<b>101</b> - F(GHz)) dB Maxi
Voltage rating		<b>850</b> Veff Maxi
Dielectric withstanding voltage		<b>2500</b> Veff mini
Insulation resistance		<b>5000</b> MΩ mini

Operating temperature	<b>-55/+120</b> ° C
Hermetic seal	<b>NA</b> Atm.cm3/s
Panel leakage	<b>NA</b>

**OTHERS CHARACTERISTICS**

Assembly instruction

Others :

\*Coax Transmisson Line Only

**MECHANICAL CHARACTERISTICS**

Center contact retention		
Axial force – Mating end		<b>27</b> N mini
Axial force – Opposite end		<b>27</b> N mini
Torque		<b>NA</b> N.cm mini
Recommended torque		
Mating		<b>NA</b> N.cm
Panel nut		<b>NA</b> N.cm
Mating life		<b>500</b> Cycles mini
Weight		<b>20.397</b> g

Issue : 0218 M

In the effort to improve our products, we reserve the right to make changes judged to be necessary.

