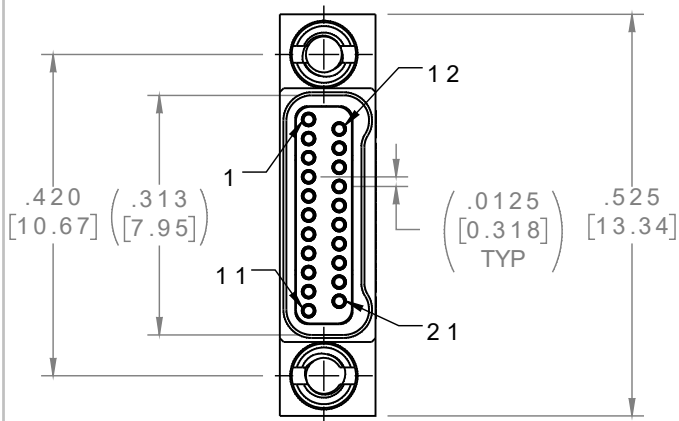


PART NO.	A 40838-021	REV	ECO	DATE	APP
		A	103406	04-19-17	TLM

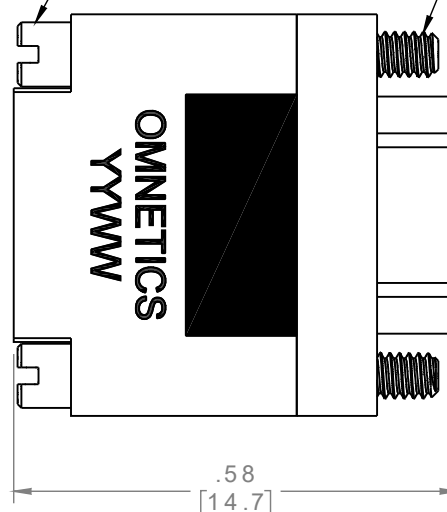
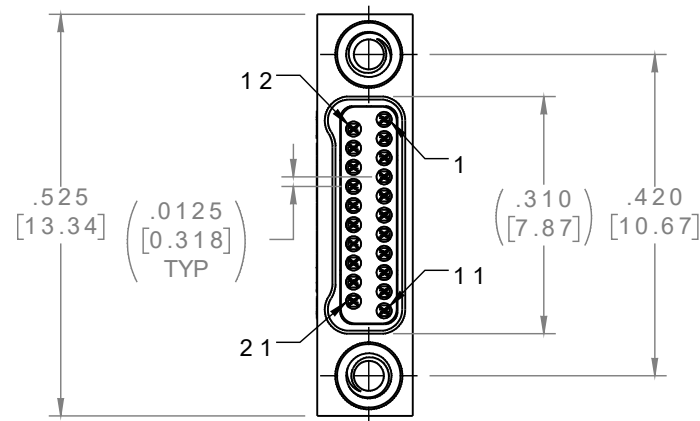
FEMALE



2 X #0-80
UNF-2B
SLOTTED HEAD

2 X #0-80
UNF-2A

MALE



MATERIALS:

INSULATOR:
LIQUID CRYSTAL
POLYMER (LCP) PER
ASTM D5138

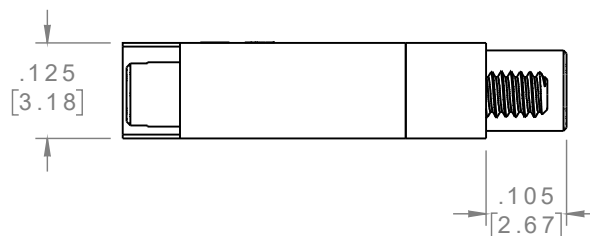
HOUSING:
ALUMINUM 6061-T6,
NICKEL PLATE PER
SAE-AMS-2404

HARDWARE:
303 STAINLESS STEEL
PER ASTM 582

CONTACTS:

MALE:
BERYLLIUM COPPER
PER ASTM B194,
C17200, GOLD PLATED
PER ASTM B488, (HARD
GOLD) TYPE II CODE C,
CLASS 1.27

FEMALE:
COPPER ALLOY PER
MIL-DTL-32139, GOLD
PLATED PER ASTM
B488, (HARD GOLD)
TYPE II CODE C, CLASS
1.27



ACTUAL SIZE

NOTE:

DIMENSIONS IN [] ARE IN
MILLIMETERS UNLESS
OTHERWISE NOTED AND ARE
FOR REFERENCE ONLY

JUM SLDW	THIRD ANGLE
	-TOLERANCES-
	UNLESS OTHERWISE NOTED
	DIMENSIONS IN INCHES
2	PL DEC ± .01
3	PL DEC ± .005
4	PL DEC ± .0005
	ANGLES ± 1°

THIS DRAWING CONTAINS CONFIDENTIAL AND PROPRIETARY INFORMATION WHICH IS THE PROPERTY OF OMNETICS CONNECTOR CORP. THIS DOCUMENT MAY NOT, IN WHOLE OR IN PART, BE DUPLICATED, OR DISCLOSED FOR ANY PURPOSE, WITHOUT WRITTEN PERMISSION FROM OMNETICS CONNECTOR CORP.	
DFTM. ERB	DATE 03-16-17
CHK'D.	DATE
APP'D.	DATE
TITLE: (21) PIN MALE/FEMALE Bi-Lobe® CONNECTOR SAVER	

OMNETICS
CONNECTOR CORPORATION
7260 COMMERCE CIRCLE EAST
MINNEAPOLIS, MN 55432
WWW.OMNETICS.COM

CAGE CODE 61873
DWG NO. A40838-021
SHEET 1 OF 1
SCALE: 4:1
REV A