

4

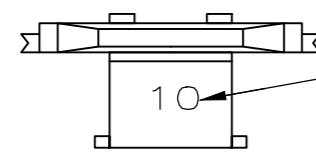
3

2

1

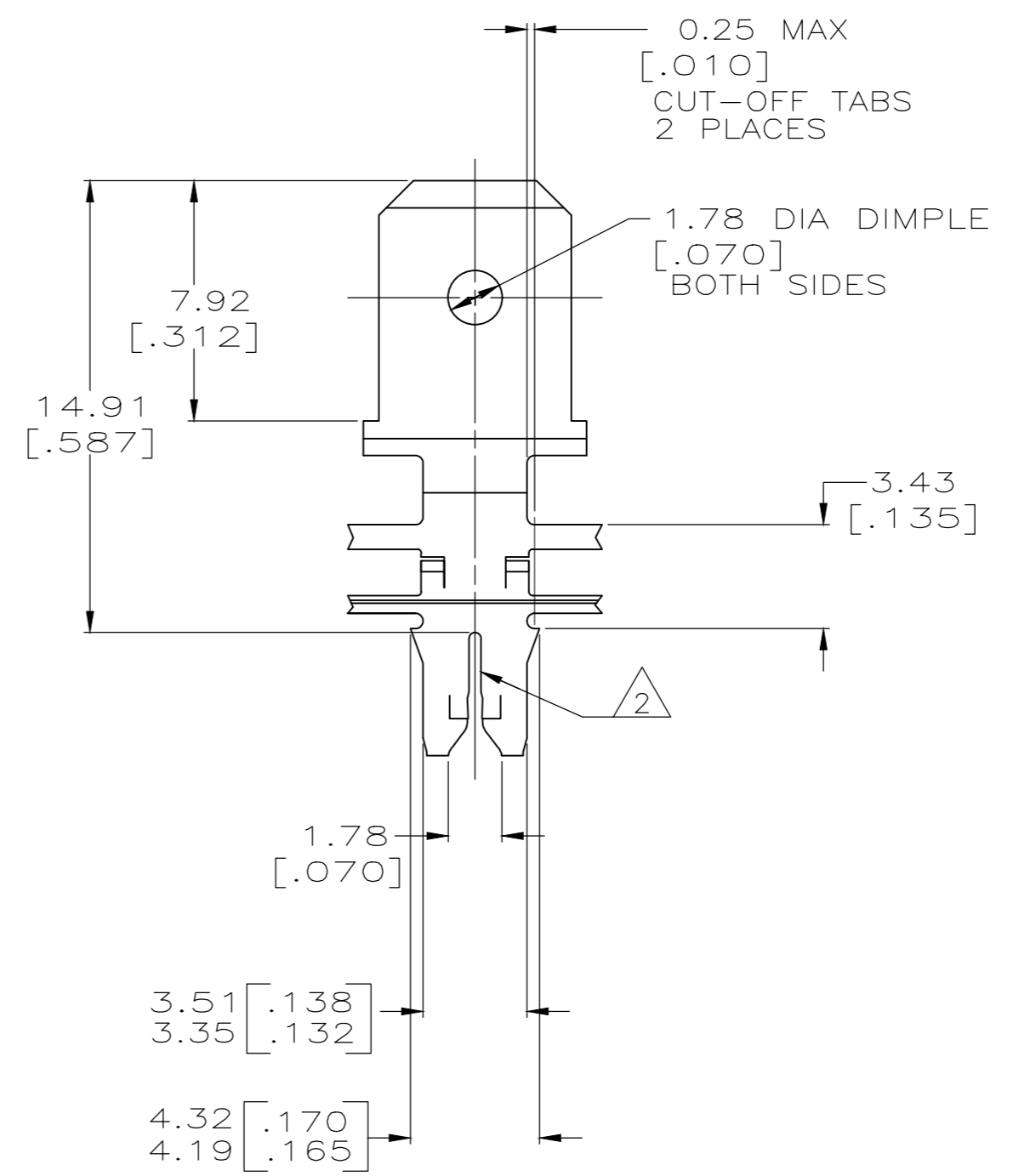
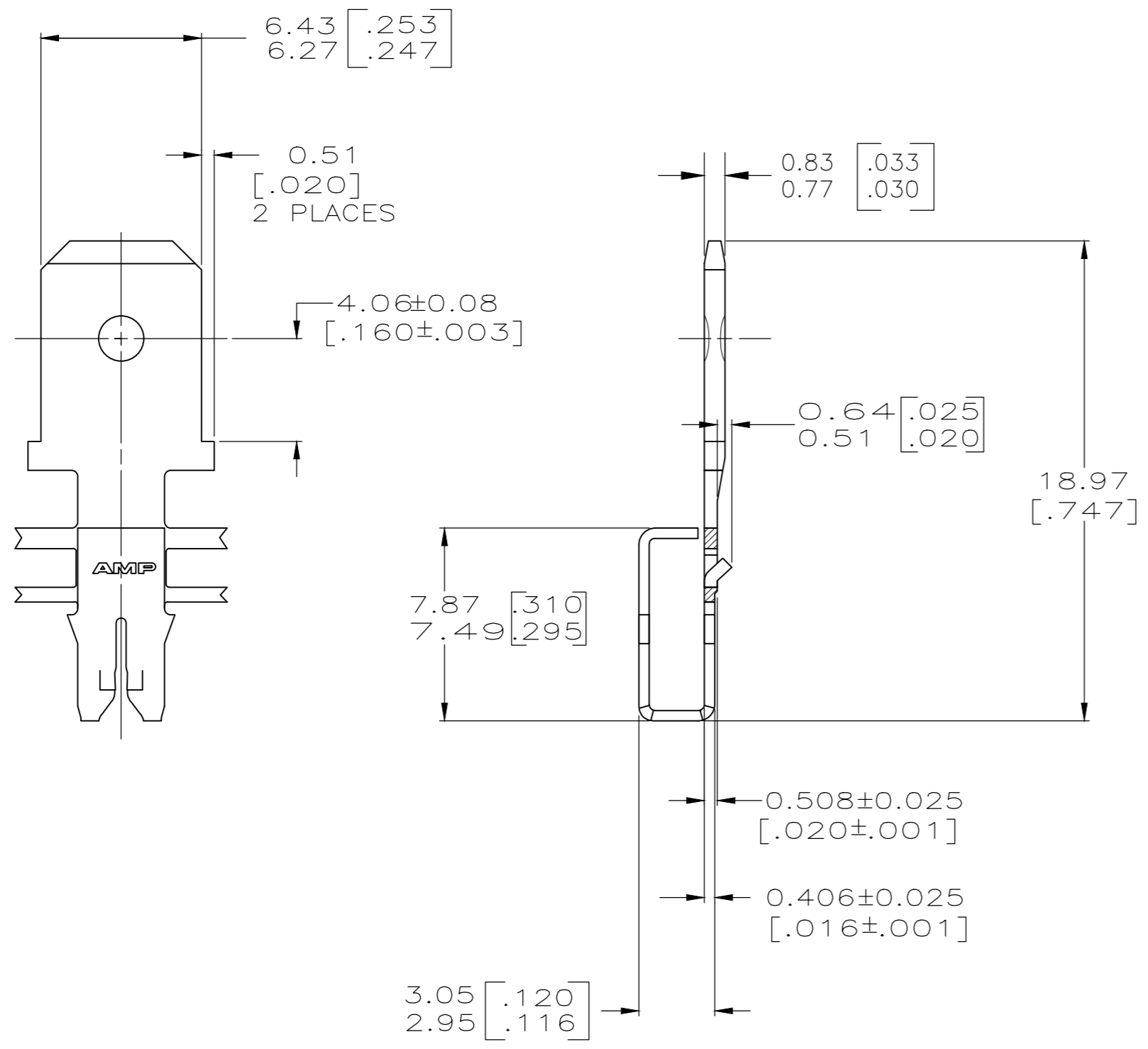
THIS DRAWING IS UNPUBLISHED. RELEASED FOR PUBLICATION
 © COPYRIGHT BY TYCO ELECTRONICS CORPORATION. ALL RIGHTS RESERVED.

LOC		DIST		REVISIONS			
P	LTR	DESCRIPTION	DATE	DWN	APVD		
AF	50	C1	REVISED PER ECR-18-009392	29MAR2019	BDA	SV	



IDENTIFICATION NUMBER 10 FOR
MAGNET WIRE RANGE

- 1 CONTINUOUS STRIP ON REELS WITH TERMINALS LOCATED ON 8.38±0.08 [.330±.003] CENTERS.
- 2 SLOT ACCEPTS 0.36-0.58mm [#27-#23] AWG COPPER MAGNET WIRE. OR ALUMINIUM MAGNET WIRE 0.51-0.64mm [#24-#22] AWG 2 WIRES MAX OF THE SAME SIZE AND SHAPE PER SLOT. ALUMINIUM WIRE RANGE IS APPLICABLE FOR POST TIN PLATED PART NOS ONLY.



1217860-1
PART NUMBER

THIS DRAWING IS A CONTROLLED DOCUMENT.		DWN 30JUL2002 MICHAEL S. FEHER	Tyco Electronics Corporation Harrisburg, PA 17105-3608	
DIMENSIONS: mm [INCHES]		CHK 30JUL2002 KURT A. RANDOLPH		
TOLERANCES UNLESS OTHERWISE SPECIFIED:		APVD 30JUL2002 KURT A. RANDOLPH	NAME	
0 PLC ± -		PRODUCT SPEC		TERMINAL, TAB, 6.35[.250] FASTON™ 300 SERIES MAG-MATE™
1 PLC ± -		108-2012		
2 PLC ± 0.25[.010]		APPLICATION SPEC		SIZE CAGE CODE DRAWING NO
3 PLC ± -		114-2067		A2 00779 C-1217860
4 PLC ± -		MATERIAL FINISH		RESTRICTED TO
ANGLES ± -		082 PRE-MILLED BRASS TIN PLATE		-
MATERIAL FINISH		WEIGHT -		CUSTOMER DRAWING
082 PRE-MILLED BRASS		TIN PLATE		SCALE 5:1 SHEET 1 OF 1 REV C1

1217860

B

A