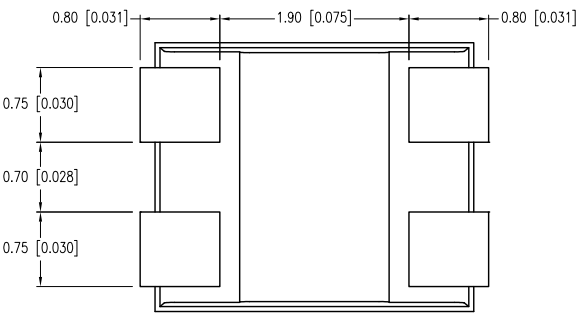
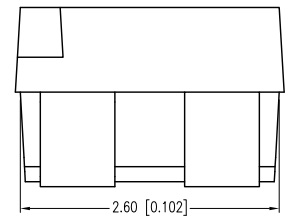
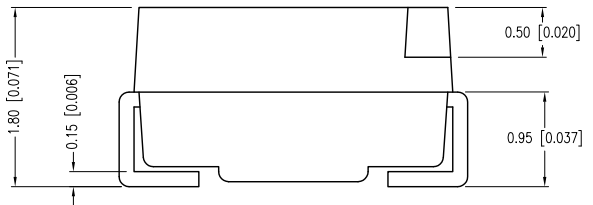
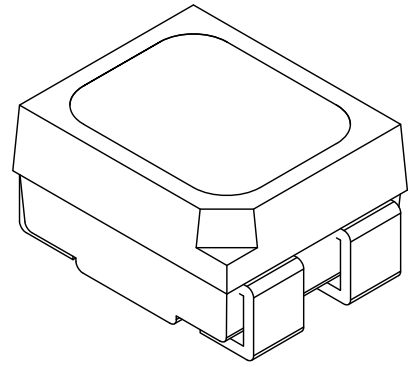
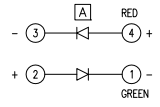
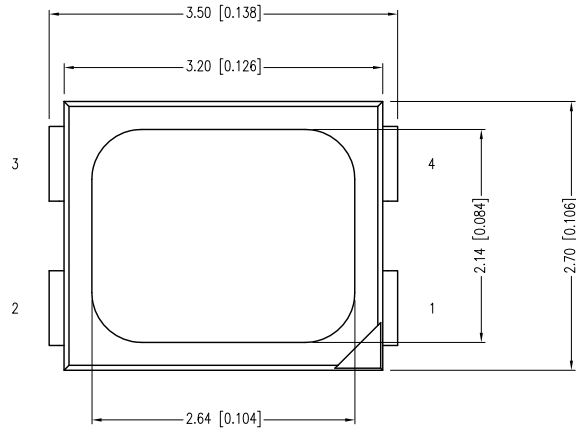


|             |                                     |      |      |
|-------------|-------------------------------------|------|------|
| PART NUMBER | SML-LX2835SUGSICTR                  | REV. | B    |
| DATE        | E.C.N. NUMBER AND REVISION COMMENTS |      | REV. |
| 04.20.11    | E.C.N. #11714.                      |      | A    |
| 1.18.12     | E.C.N. #11798.                      |      | B    |



**A** ELECTRO-OPTICAL CHARACTERISTICS  $T_A=25^{\circ}\text{C}$   $I_f=20\text{mA}$

| PARAMETER             | MIN              | TYP     | MAX | UNITS    | TEST COND            |
|-----------------------|------------------|---------|-----|----------|----------------------|
| PEAK WAVELENGTH (G/R) |                  | 575/632 |     | nm       |                      |
| FORWARD VOLTAGE       |                  | 2.0     | 2.4 | $V_f$    |                      |
| REVERSE VOLTAGE       | 5.0              |         |     | $V_r$    | $I_f=100\mu\text{A}$ |
| AXIAL INTENSITY (G/R) |                  | 45/90   |     | mcd      | $I_f=20\text{mA}$    |
| VIEWING ANGLE         |                  | 120     |     | 2x theta |                      |
| EMITTED COLOR:        | GREEN/RED        |         |     |          |                      |
| EPOXY LENS FINISH:    | WATER CLEAR LENS |         |     |          |                      |

LIMITS OF SAFE OPERATION AT 25°C PER CHIP

| PARAMETER             | MAX        | UNITS      |
|-----------------------|------------|------------|
| PEAK FORWARD CURRENT* | 60         | mA         |
| STEADY CURRENT (R/G)  | 25         | mA         |
| POWER DISSIPATION     | 100        | mW         |
| DERATE FROM 25°C      | -1.2       | mW/°C      |
| OPERATING TEMP.       | -40 TO +85 | °C         |
| STORAGE TEMP.         | -40 TO +85 | °C         |
| SOLDERING TEMP.       | +260       | °C         |
| 2.0mm FROM BODY       |            | 3 SEC. MAX |

\*  $t < 10\mu\text{s}$

NOTES:

1. THE POLARITY MARK IS ORIENTED TOWARDS THE TAPE SPROCKET HOLE.
2. 2,000 PER REEL.

CAUTION: MOISTURE SENSITIVE DEVICE  
PER JEDEC LEVEL 3 STANDARDS

\*UNLESS OTHERWISE SPECIFIED TOLERANCES PER DECIMAL PRECISION ARE: X=±1 (±0.039), X.X=±0.5 (±0.020), X.XX=±0.25 (±0.010), X.XXX=±0.127 (±0.005). LEAD SIZE=±0.05 (±0.002), LEAD LENGTH=±0.75 (±0.030). MIN.= <sup>+0.00</sup>DECIMAL PRECISION MAX.= <sup>-0.00</sup>DECIMAL PRECISION

290 E. HELEN ROAD  
PALATINE, IL 60067-6976  
PHONE: +1.847.359.2790  
FAX: +1.847.359.6538  
WEB: WWW.LUMEX.COM  
MEMBER OF ITW PHOTONICS GROUP

2.7mm x 3.2mm SML /W REFLECTOR CUP, DUAL CHIP, 574nm/636nm LED, WATER CLEAR LENS, 2k PER REEL.

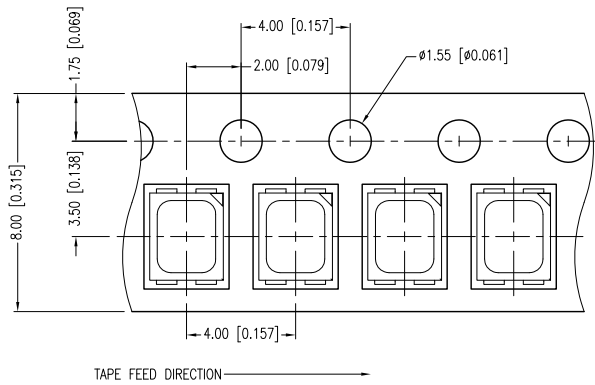
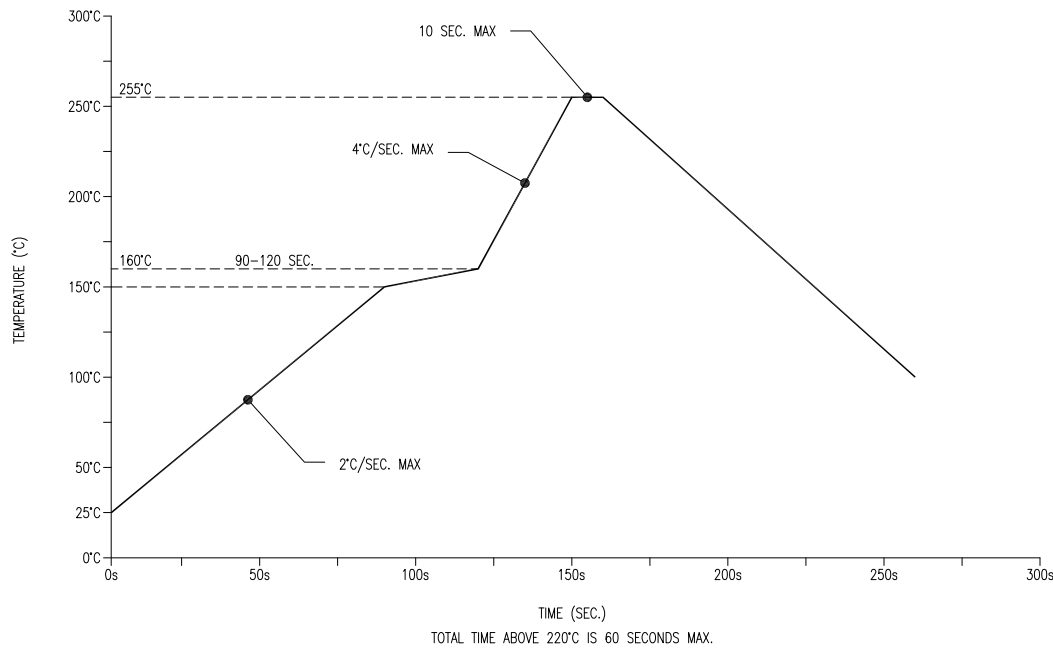
\*\*THE SPECIFICATIONS MAY CHANGE AT ANY TIME WITHOUT NOTICE DUE TO NEW MATERIALS OR PRODUCT IMPROVEMENT.\*\*

CONFIDENTIAL INFORMATION  
THE INFORMATION CONTAINED IN THIS DOCUMENT IS THE PROPERTY OF LUMEX INC. EXCEPT AS SPECIFICALLY AUTHORIZED IN WRITING BY LUMEX INC., THE HOLDER OF THIS DOCUMENT SHALL KEEP ALL INFORMATION CONTAINED HEREIN CONFIDENTIAL AND SHALL PROTECT SAME IN WHOLE OR IN PART FROM DISCLOSURE AND DISSEMINATION TO ALL THIRD PARTIES.

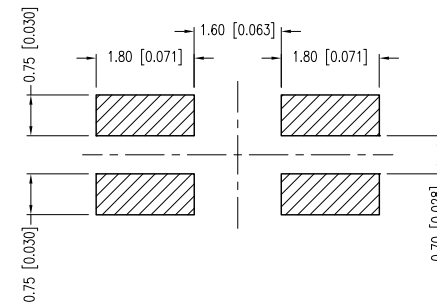
|        |           |           |    |
|--------|-----------|-----------|----|
| DATE:  | 02.03.11  | DRAWN BY: | AB |
| PAGE:  | 1 OF 2    | CHKD BY:  | KF |
| SCALE: | NTS       | APRVD BY: | KF |
| UNIT:  | mm [INCH] |           | Ⓟ  |

|             |                                     |      |      |
|-------------|-------------------------------------|------|------|
| PART NUMBER | SML-LX2835SUGSICTR                  | REV. | B    |
| DATE        | E.C.N. NUMBER AND REVISION COMMENTS |      | REV. |
| 04.20.11    | E.C.N. #11714.                      |      | A    |
| 1.18.12     | E.C.N. #11798.                      |      | B    |

LEAD FREE REFLOW PROFILE



RECOMMENDED SOLDER PAD LAYOUT



\*UNLESS OTHERWISE SPECIFIED TOLERANCES PER DECIMAL PRECISION ARE: X=±1 (±0.039), X.X=±0.5 (±0.020), X.XX=±0.25 (±0.010), X.XXX=±0.127 (±0.005). LEAD SIZE=±0.05 (±0.002), LEAD LENGTH=±0.75 (±0.030). MIN=  $\begin{matrix} +0.00 \\ -0.00 \end{matrix}$  DECIMAL PRECISION MAX.=  $\begin{matrix} +0.00 \\ -0.00 \end{matrix}$  DECIMAL PRECISION

UNCONTROLLED DOCUMENT



290 E. HELEN ROAD  
PALATINE, IL 60067-6976  
PHONE: +1.847.359.2790  
FAX: +1.847.359.6538  
WEB: WWW.LUMEX.COM  
MEMBER OF ITW PHOTONICS GROUP

2.7mm x 3.2mm SML /W REFLECTOR CUP, DUAL CHIP, 574nm/636nm LED, WATER CLEAR LENS, 2k PER REEL.

\*\*THE SPECIFICATIONS MAY CHANGE AT ANY TIME WITHOUT NOTICE DUE TO NEW MATERIALS OR PRODUCT IMPROVEMENT.\*\*

CONFIDENTIAL INFORMATION  
THE INFORMATION CONTAINED IN THIS DOCUMENT IS THE PROPERTY OF LUMEX INC. EXCEPT AS SPECIFICALLY AUTHORIZED IN WRITING BY LUMEX INC., THE HOLDER OF THIS DOCUMENT SHALL KEEP ALL INFORMATION CONTAINED HEREIN CONFIDENTIAL AND SHALL PROTECT SAME IN WHOLE OR IN PART FROM DISCLOSURE AND DISSEMINATION TO ALL THIRD PARTIES.

|                 |              |
|-----------------|--------------|
| DATE: 02.03.11  | DRAWN BY: AB |
| PAGE: 2 OF 2    | CHKD BY: KF  |
| SCALE: NTS      | APRVD BY: KF |
| UNIT: mm [INCH] | Ⓟ            |