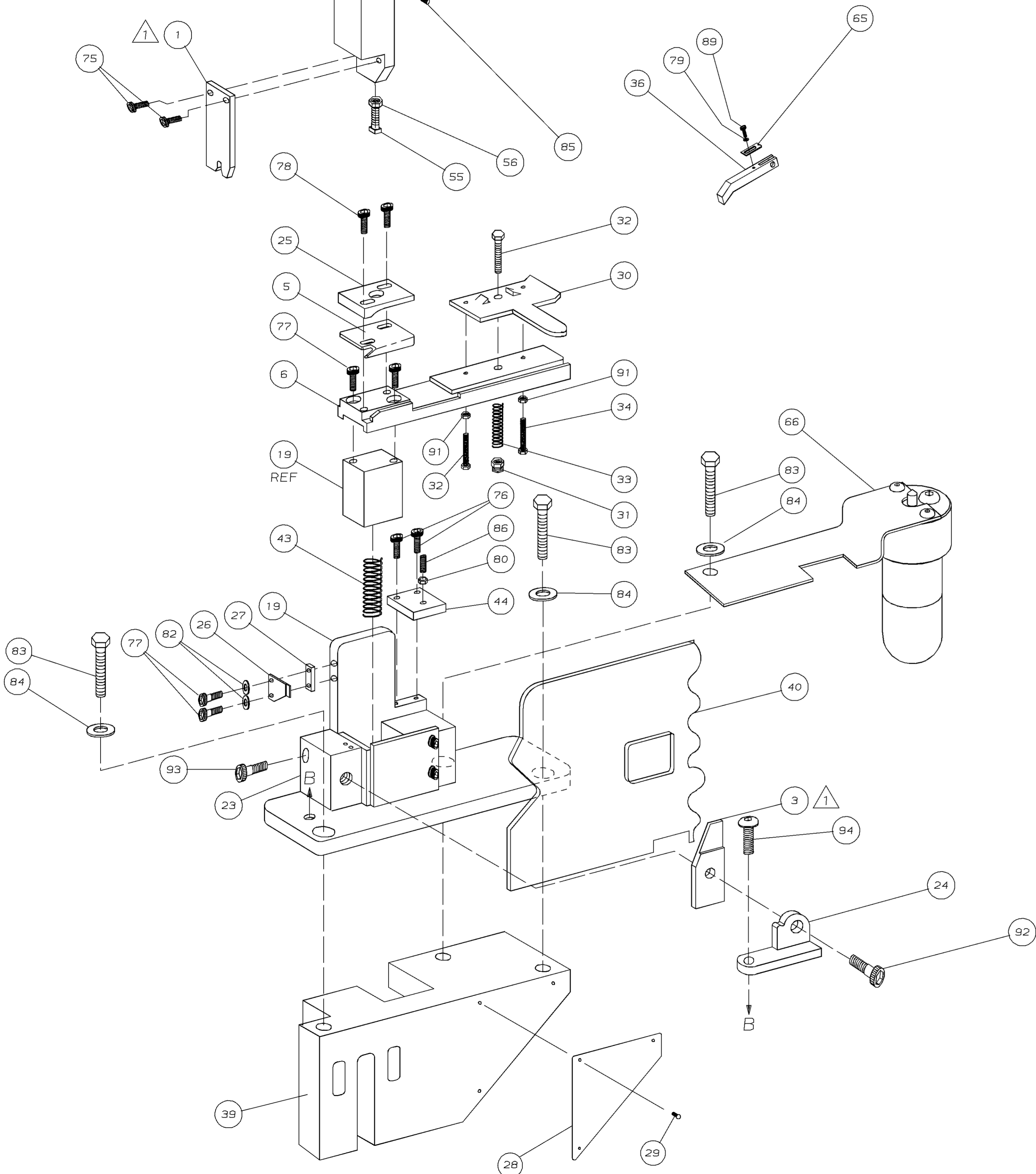


PART NUMBER	REV	FIRST USED
565724-1	L	1-471273-3

- 1 RECOMMENDED SPARE PARTS.
- 2 CRIMP HEIGHT FOR INITIAL SET-UP ONLY.



TERMINAL NAME; LENGTHWISE THRU SPLICE		CRIMPING DATA			
60997		CRIMP HEIGHT	WIRE SIZE		
		.139	2 (12)		
	CRIMP	SIZE	TYPE	RANGE	
	WIRE	.180	F	12000-18000 CMA	
	INSUL	-	-		
	FEED	APPL INST		SET UP GAGE LAYOUT	
	.300	-	-		
TERM APPL SPEC -		WIRE STRIP LENGTH			

-	-	-	-	-	73
-	-	-	-	-	72
-	-	-	-	-	71
-	-	-	-	-	70
-	-	-	-	-	69
-	-	-	-	-	68
-	-	-	-	-	67
1	-	A	465184-2	LUBRICATOR ASSY	66
1	-	A	374999	TENSION ADJ PLATE	65
-	-	-	-	-	64
-	-	-	-	-	63
-	-	-	-	-	62
-	-	-	-	-	61
-	-	-	-	-	60
-	-	-	-	-	59
-	-	-	-	-	58
-	-	-	-	-	57
1	-	-	22202-1	NUT, HEX JAM, 1/4-20	56
1	-	-	21077-7	SCR, SQ HD SET, 1/4-20 X 1.50	55
-	-	-	-	-	54
-	-	-	-	-	53
-	-	-	-	-	52
-	-	-	-	-	51
-	-	-	-	-	50
-	-	-	-	-	49
-	-	-	-	-	48
-	-	-	-	-	47
-	-	-	-	-	46
-	-	-	-	-	45
1	-	-	372998	RETAINER, FEED PLATE	44
1	-	A	2-24017-7	SPRING SLIDE	43
-	-	-	-	-	42
-	-	-	-	-	41
1	-	-	460582-1	GUARD	40
1	-	C	570238	BASE CASTING	39
-	-	-	-	-	38
-	-	-	-	-	37
1	-	-	811432-1	FEED FINGER	36
-	-	-	-	-	35
2	-	A	372997	ADJ. SCREW, STOCK DRAG	34
1	-	A	23846-7	SPRING, STOCK DRAG	33
1	-	-	21015-8	STUD, STOCK DRAG	32
1	-	A	21022-4	NUT, STOCK DRAG HANDLE	31
1	-	-	372990	STOCK DRAG	30
3	-	A	21017-6	SCR, DRIVE 4-40X.25	29
1	-	A	452373-1	PLATE, IDENTIFICATION	28
1	-	-	375569	SPACER, CLEANER	27
1	-	-	810995-2	STRIPPER	26
1	-	-	376945	WIRE GUIDE	25
1	-	-	378975	AUX. ANVIL HOLDER	24
1	-	-	374348	ANVIL HOLDER	23
-	-	-	-	-	22
-	-	-	-	-	21
-	-	-	-	-	20
1	-	C	473933	APPLICATOR MOUNT ASSY	19
-	-	-	-	-	18
-	-	-	-	-	17
-	-	-	-	-	16
1	-	B	471057	RAM	15
-	-	-	-	-	14
-	-	-	-	-	13
-	-	-	-	-	12
-	-	-	-	-	11
-	-	-	-	-	10
-	-	-	-	-	9
-	-	-	-	-	8
-	-	-	-	-	7
1	-	A	1-471917-0	PLATE, FEED	6
1	-	B	471972-8	BLADE, SHEAR	5
-	-	-	-	-	4
1	-	B	373014	ANVIL	3
-	-	-	-	-	2
1	-	C	1-453925-2	CRIMPER, WIRE	1

-	-	-	-	-	129
-	-	-	-	-	128
-	-	-	-	-	127
-	-	-	-	-	126
-	-	-	-	-	125
-	-	-	-	-	124
-	-	-	-	-	123
-	-	-	-	-	122
-	-	-	-	-	121
-	-	-	-	-	120
-	-	-	-	-	119
-	-	-	-	-	118
-	-	-	-	-	117
-	-	-	-	-	116
-	-	-	-	-	115
-	-	-	-	-	114
-	-	-	-	-	113
-	-	-	-	-	112
-	-	-	-	-	111
-	-	-	-	-	110
-	-	-	-	-	109
-	-	-	-	-	108
-	-	-	-	-	107
-	-	-	-	-	106
-	-	-	-	-	105
-	-	-	-	-	104
-	-	-	-	-	103
-	-	-	-	-	102
-	-	-	-	-	101
-	-	-	-	-	100
-	-	-	-	-	99
-	-	-	-	-	98
-	-	-	-	-	97
-	-	-	-	-	96
-	-	-	-	-	95
1	-	A	4-21002-1	SCR, B5HC 5/16-18 x .75	94
1	-	A	3-21001-4	SCR, SHC, 3/8-16 X .88	93
1	-	A	21001-5	SCR, SHC, 1/4-20 X .88	92
2	-	A	21018-7	NUT, HEX 10-32	91
-	-	-	-	-	90
1	-	A	2-21000-5	SCR, SHC, 8-32 X .25	89
-	-	-	-	-	88
-	-	-	-	-	87
1	-	A	5-21006-5	SCR, SOC SET, 10-32 X .75	86
1	-	A	2-21549-3	SCR, SOC SET, 1/4-20 X .25	85
3	-	A	371178	WASHER, FLAT, 3/8	84
3	-	A	3-21015-2	SCR, HEX HD, 3/8-16 X 1.25	83
2	-	A	21024-5	WASHER, LOCK #10	82
-	-	-	-	-	81
1	-	A	21018-7	NUT, HEX 10-32	80
1	-	A	21055-6	WASHER, FLAT, #8	79
2	-	A	3-21000-7	SCR, SHC 10-32 X .75	78
4	-	A	3-21000-6	SCR, SHC, 10-32 X .62	77
2	-	A	3-21000-4	SCR, SHC, 10-32 X .38	76
2	-	A	21001-3	SCR, SHC, 1/4-20 X .62	75
-	-	-	-	-	74
-1	U/M	DWG SIZE	PART NO	DESCRIPTION	ITEM NO
				REVISION OF EACH ASSY NO (WHEN BLANK, USE DWG REVISION)	
PARTS LIST					

QTY REQD PER ASSY		PARTS LIST	
DR	3-20-95	APP	3-23-95
D. SALTZER		T. BEDDICK	
CHK	3-23-95	REL	4/20/95
C. ERISMAN		B. MORGAN	
NAME: END FEED STANDARD APPLICATOR			
MACHINE REF: STD APPL			
SCALE: 1:4	DWG NO: 565724-1	SHEET: 1 of 1	REV: L

THIS DRAWING IS A CONTROLLED DOCUMENT FOR AMP INCORPORATED. IT IS SUBJECT TO CHANGE AND THE CONTROLLING ENGINEERING ORGANIZATION SHOULD BE CONTACTED FOR THE LATEST REVISION.

THIS INFORMATION IS CONFIDENTIAL AND IS DISCLOSED TO YOU ON CONDITION THAT NO FURTHER DISCLOSURE IS MADE BY YOU TO OTHER THAN AMP PERSONNEL WITHOUT WRITTEN AUTHORIZATION FROM AMP INCORPORATED, HARRISBURG, PA.

LOC A
DIST 4