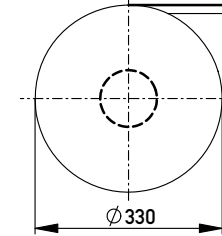
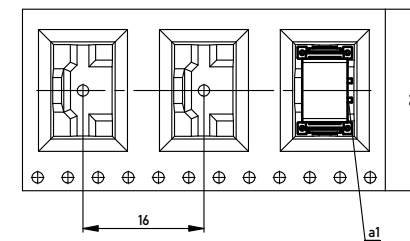


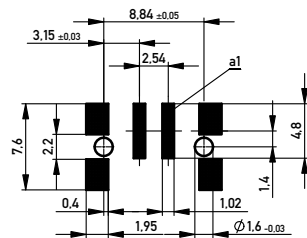
Verpackt in Gurtverpackung
Tape on Reel Packaging
Verpackungseinheit: 320 Stück
Packaging unit: 320 pcs



Abspulrichtung - Reel off Direction



Leiterplatten-Layout Vorschlag für SMT
PCB-Layout Proposal for SMT



Anforderungsstufe 1
Performance Level 1

Kontaktbereich vergoldet
Mating Area gold plating

Anschlussbereich verzinkt 4-6 µm
Terminal Area 4-6 µm tin plating

Koplanarität der Anschlüsse ≤ 0.1 mm
Coplanarity Area of Termination ≤ 0.1 mm

454199		weiß white	0.3	2.1	0.6	1.8	Codierung wie Variante schwarz Encoding such variant black.
294648		rot red	2.1	0.3	2.4	0	
294647		grün green	1.5	0.9	1.8	0.6	
294646		blau blue	0.9	1.5	1.2	1.2	
294645		schwarz black	0.3	2.1	0.6	1.8	
Ident-Nr. part-no.	Codierung coding	Farbe color	A	B	C	D	Bemerkung note

Information:	Tolerances		Scale	3:1
All rights reserved. Only for Information. To ensure that this is the latest version of this drawing, please contact one of the ERNI companies before using.	Subject to modification without prior notice. Drawing will not be updated.	All Dimensions in mm	Designation	M 2.54 SRC-P, 2-polig
9	24.04.2013	www.ERNI.com	224993	I
Index	Date	ERNI	Class	A2
			SRCP	