

MADE IN THIRD ANGLE PROJECTION

3

2

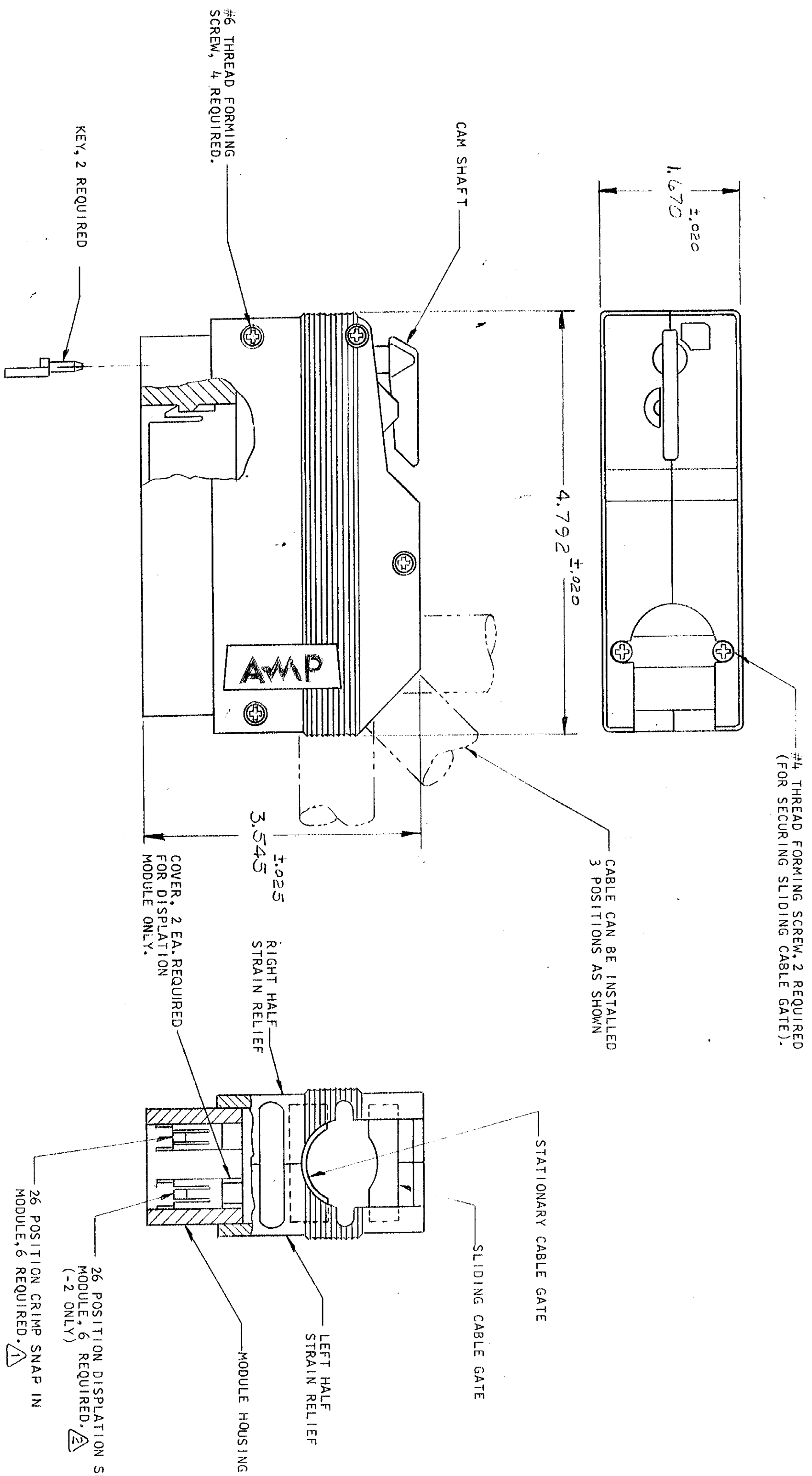
1

Loc DIST
R 39

© COPYRIGHT 1975 BY AMP INCORPORATED, HARRISBURG, PA.
ALL INTERNATIONAL RIGHTS RESERVED. AMP INCORPORATED PRODUCTS
COVERED BY U. S. AND FOREIGN PATENTS AND/OR PATENTS PENDING.
UNLESS OTHERWISE SPECIFIED, ALL DIMENSIONS ARE IN INCHES.
UNLESS OTHERWISE SPECIFIED, ALL DIMENSIONS ARE IN INCHES.

- 207228-1
207228-2
1. AS SHOWN, 26 POSITION CRIMP MODULES.
 2. WITH 6-26 POSITION DISPLATION MODULES.
 1. SAME AS -1 EXCEPT: 26 POSITION CRIMP MODULES.
 2. WITH 6-26 POSITION DISPLATION MODULES.

REVISIONS						
P	F	ZONE	LTR	DESCRIPTION	DATE	APPROVED
1	✓			RELEASED	12/15/75	[Signature]
2	✓	A		ADD OVERHILL DIMS	12/22/75	[Signature]



1. 26 POSITION CRIMP MODULES ACCEPT "F" CRIMPED CONTACTS, (CONTACTS NOT SUPPLIED, MUST BE ORDERED SEPARATELY).
2. 26 POSITION DISPLATION MODULES ARE SUPPLIED WITH CONTACTS. MATERIAL-ALL PARTS: GLASS FILLED BLACK THERMOPLASTIC.
3. ALL ASSY SCREWS ARE STEEL, ZINC PLATED.

UNLESS OTHERWISE SPECIFIED DIMENSIONS ARE IN INCHES. TOLERANCES ON: DECIMALS ± ANGLES ±		CONTRACT NO.		NAME	
MATERIAL		DR		CABLE KIT, SIZE II, 156 POSITION, ZEPD ENTRY CONN., SERIES "CR"	
FINISH		CHK		AMP INCORPORATED Harrisburg, Pa.	
OTHER APPD		APPD		SIZE CODE IDENT NO	
		DSGN APPD		DRAWING NO	
		OTHER APPD		207228	
		SCALE		SHEET 1 OF 1	
		C		00779	

AMP 1471-6 (7-73)

CUSTOMER DRAWING

CUST 207228