

**D** **X** **X** **S** **3** **3** **E** **6** **X** **X**  **L** **F**

**SERIES**

**NO.OF CONTACTS**

09,15,25,37

**TYPE OF CONTACTS**

S-SOCKET

**TYPE OF TERMINATION**

33-ANGLED SPILL

PITCH 2.84 USA

FOOT PRINT 8.08 USA

**HEIGHT OF TERMINATION**

E-2.00mm COMPATIBLE FOR 1.6mm PCB

**RoHS INFORMATIONS**

"This LF product meets European Union Directives and other country regulations as described in GS-22-008"

The housing will withstand exposure to 260°C peak temperature for 30 seconds in a convection,infra-red or vapor reflow oven solder application.

Packaging as per GS-14-920

**PRODUCT SPECIFICATION**

See :- GS-12-433

**PACKAGING SPECIFICATION**

See :- GS-14-1139

SEE NOTE RoHS

**PACKAGING SPECIFICATION**

- 12 - HEAT SEALING TAPE & REEL PACKAGING
- 09 - TRAY PACKAGING
- 132 - PRESSURE SEALING TAPE & REEL PACKAGING

**MOUNTING OPTIONS**

- RV-> LIF METAL PEG +F.SCREW LOCK UNC 4 40+METAL BRACKET
- RL-> LIF METAL PEG+ INSERT M3+METAL BRACKET
- RX-> LIF METAL PEG + INSERT UNC 4-40 +METAL BRACKET

**PLATING**

- 6 :> 500 Mating/Un-mating performance
- 4 :> 200 Mating/Un-mating performance



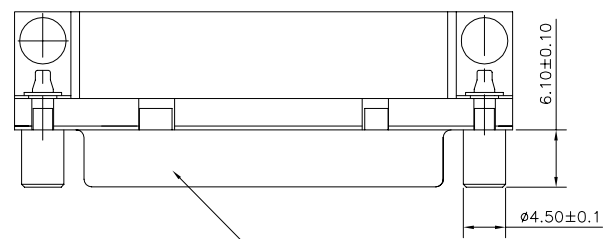
Copyright FCI

mat'l. code SEE.TECH.SPEC				surface ISO 1302 <input checked="" type="checkbox"/> ISO 406 ISO 1101		tolerance tolerances unless otherwise specified		projection MM		product family DELTA-D		
ltr	ecn no	dr	date	angles	linear			MM		title DELTA-D A/S FEMALE PIP CONNECTOR US VERSION		
A	107-0167	AS	2007-12-04									
B	108-0175	AS	2009-01-14									
C	109-0130	AS	2009-07-08									
D	109-0162	AS	2009-08-17	dr	ANISH.SALAM	2007-12-04				dwg no sheet 1 of 2		
E	111-0052	RPK	2011-03-17	enr	ANISH.SALAM	2009-08-17				size A3		
				chr	ANISH.SALAM	2009-08-17				type Product Customer Drawing		
				appd	ANISH.SALAM	2009-08-17						
sheet index	revision sheet	D	D	D	E							
		1	2	2								

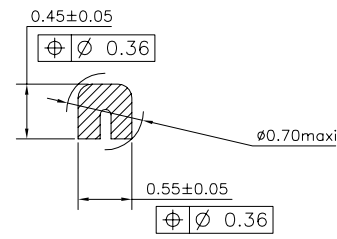


FCIconnect.com

Copyright FCI

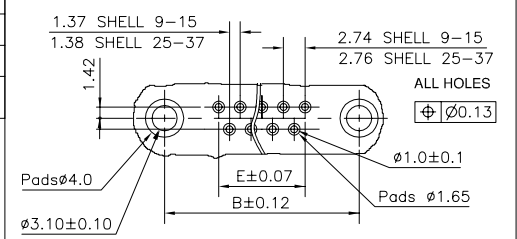


PART NUMBER AND DATE CODE MARKING

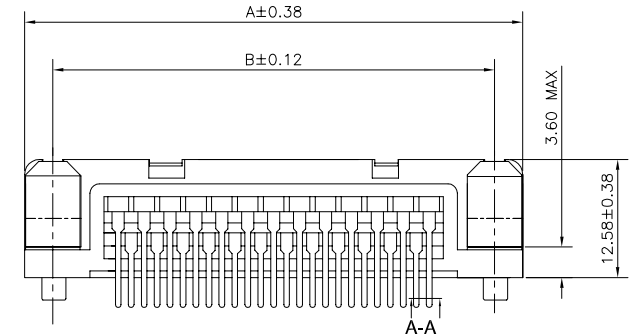
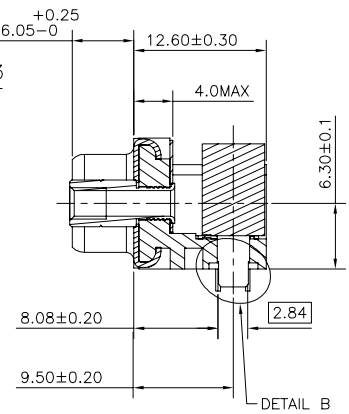
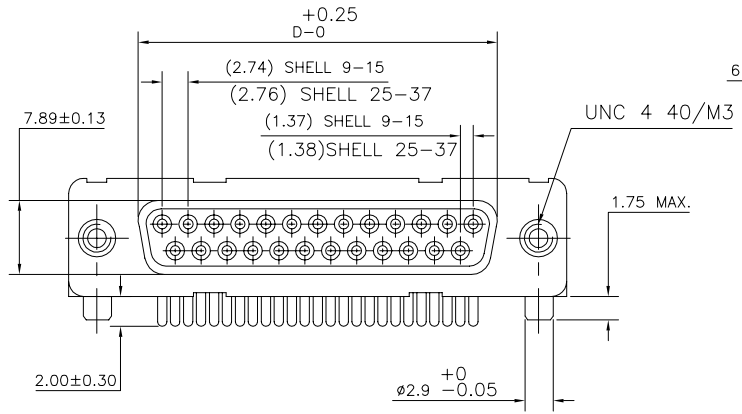


SECTION A-A

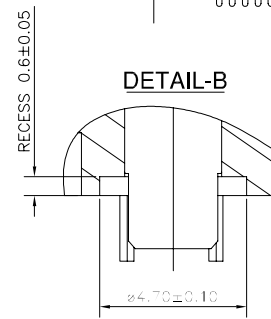
37	69.32	63.50	54.71	49.68
25	53.03	47.04	38.25	33.12
15	39.14	33.32	24.54	19.18
09	30.81	24.99	16.21	10.96
SHELL	A	B	D	E



PCB DRILLING & RECOMMENDED PAD DETAILS  
(AFTER PLATING - THICKNESS 1.60MM)



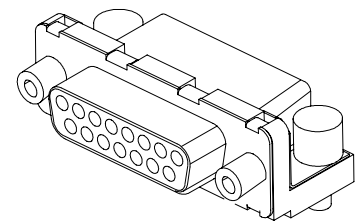
DETAIL-B



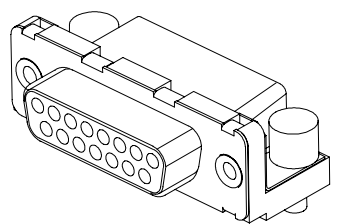
TRUE POSITIONING :  $\oplus \ominus \varnothing 0.36$

ACCESSORIES DETAILS

RV VERSION



RX/RL VERSION



mat'l. code		SEE.TECH.SPEC		surface	ISO 1302	tolerance	ISO 406 ISO 1101	projection	product family	DELTA-D	
ltr		ecn no	dr	date	angles	linear	tolerances unless otherwise specified	MM	title		
A		107-0167	AS	2007-12-04					DELTA-D A/S FEMALE PIP CONNECTOR		
B		108-0175	AS	2009-01-16			.00±0.1		US VERSION		
C		109-0130	AS	2009-07-08	0°±1°		.000±.00X	scale	-		
D		109-0162	AS	2009-08-17	dr	ANISH.SALAM	2007-12-04	FCI			
E		111-0052	RPK	2011-03-17	enrg	ANISH.SALAM	2009-08-17				
					chr	ANISH.SALAM	2009-08-17				
					appd	ANISH.SALAM	2009-08-17	dwg no sheet 2 of 2 size			
sheet		revision	D	D	D	E		C-DD-0100 A3			
index		sheet	1	2	2			type Product Customer Drawing			

PDM: Rev:E

STATUS:Released

Printed: Mar 31, 2011