

MATERIALS AND FINISHES

BODY: BRASS
PLATED TRI-M

CONTACT: BRASS
PLATED SILVER

INSULATOR: TEFLON

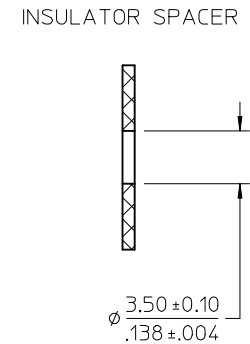
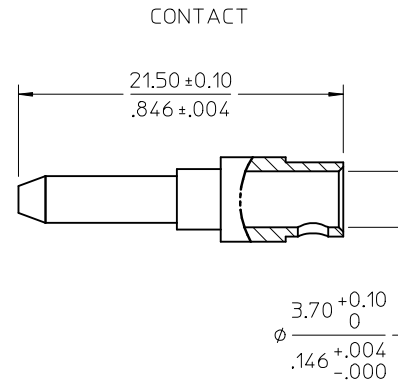
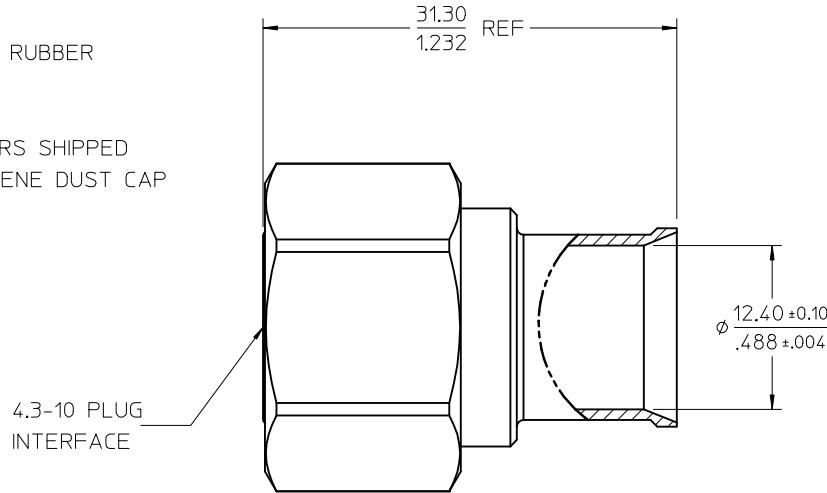
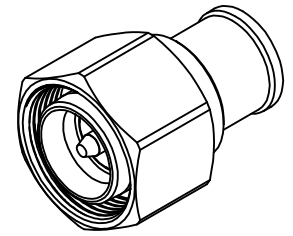
COUPLING NUT: BRASS
PLATED NICKEL

O-RING: SILICONE RUBBER

NOTE: CONNECTORS SHIPPED
WITH POLYETHYLENE DUST CAP
SEE TABLE

PERFORMANCE REQUIREMENTS:

FREQUENCY RANGE: 0-6GHz
IMPEDANCE: 50 OHM
WITHSTAND VOLTAGE(AC): 2500V @0.5mA
VSWR: ≤1.10(0-3GHz)
PIM3(2x20W): ≤-165dBc@1800MHZ
WATER-PROOF: IP68 WHEN MATED

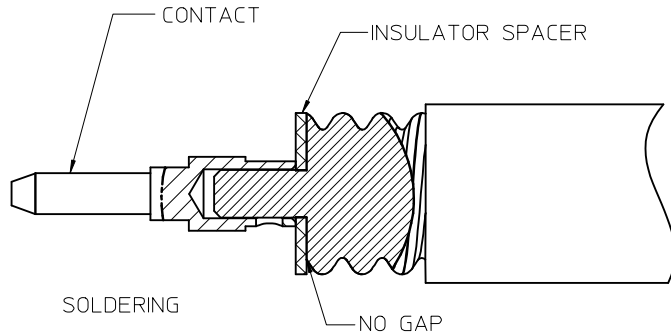


73162-6152	YES	ONE PIECE PER CARTON
73162-6151	NO	ONE PIECE PER CARTON
73162-6150	NO	BLANK
PART NO.	DUST CAP	PACKAGING

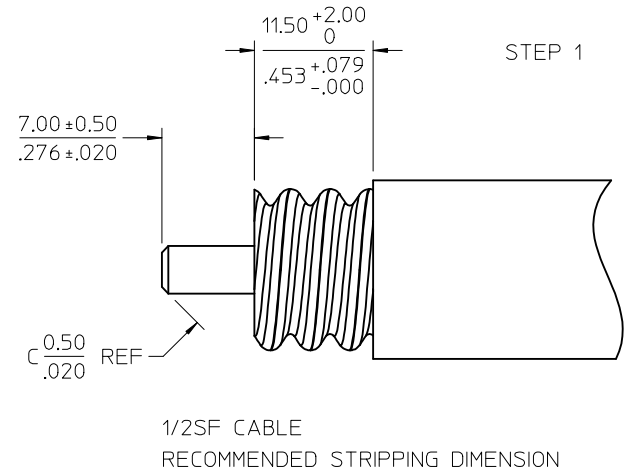
IEC61169-54	INTERFACE
SPECIFICATION	DESCRIPTION

CHG: ADD NEW PN. 73162-6152	EC NO: URF2017-0141 DRWN:YHUANG11 2016/09/20 CHKD: APPR:MYE08 2016/09/30	DESCRIPTION	QUALITY SYMBOLS	GENERAL TOLERANCES (UNLESS SPECIFIED)		DIMENSION STYLE	SCALE	DESIGN UNITS	THIRD ANGLE PROJECTION
				mm	INCH	MM/IN	METRIC	☉	
A2	REV	DRAFT WHERE APPLICABLE MUST REMAIN WITHIN DIMENSIONS	ANGULAR ± 2°	4 PLACES	± --- ± ---	DRAWN BY	DATE	TITLE	DOCUMENT NO.
				3 PLACES	± --- ± ---	YHUANG11	2015/12/03		
				2 PLACES	± --- ± ---	CHECKED BY	DATE	SHEET NO.	
				1 PLACE	± --- ± ---	MXU11	2015/12/03		1 OF 2
				0 PLACE	± --- ± ---	APPROVED BY	DATE		
						MYE08	2016/02/01		
						MATERIAL NO.		THIS DRAWING CONTAINS INFORMATION THAT IS PROPRIETARY TO MOLEX INCORPORATED AND SHOULD NOT BE USED WITHOUT WRITTEN PERMISSION	
						SEE TABLE			

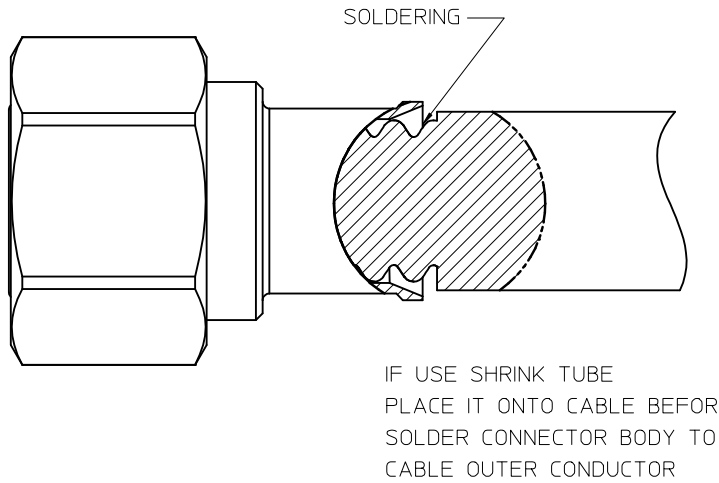
STEP 2



STEP 1



STEP 3



CHG: SEE SHEET 1 EC NO: URF2017-0141 DRWN:YHUANG11 2016/09/20 CHKD: APPR:MYE08 2016/09/30	QUALITY SYMBOLS ▽=0 ▽=0 ▽=0	GENERAL TOLERANCES (UNLESS SPECIFIED)		DIMENSION STYLE MM/IN	SCALE	DESIGN UNITS METRIC	THIRD ANGLE PROJECTION			
		4 PLACES ± --- ± ---	3 PLACES ± --- ± ---	2 PLACES ± --- ± ---	1 PLACE ± --- ± ---	0 PLACE ± --- ± ---	ANGULAR ± 2°	MATERIAL NO. SEE TABLE	DOCUMENT NO. SD-73162-615	SHEET NO. 2 OF 2
A2	DESCRIPTION	DRAFT WHERE APPLICABLE MUST REMAIN WITHIN DIMENSIONS		THIS DRAWING CONTAINS INFORMATION THAT IS PROPRIETARY TO MOLEX INCORPORATED AND SHOULD NOT BE USED WITHOUT WRITTEN PERMISSION						