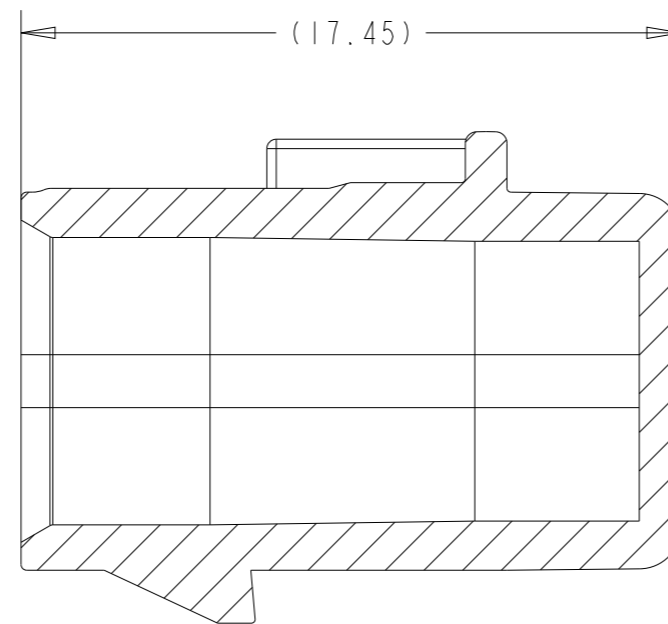
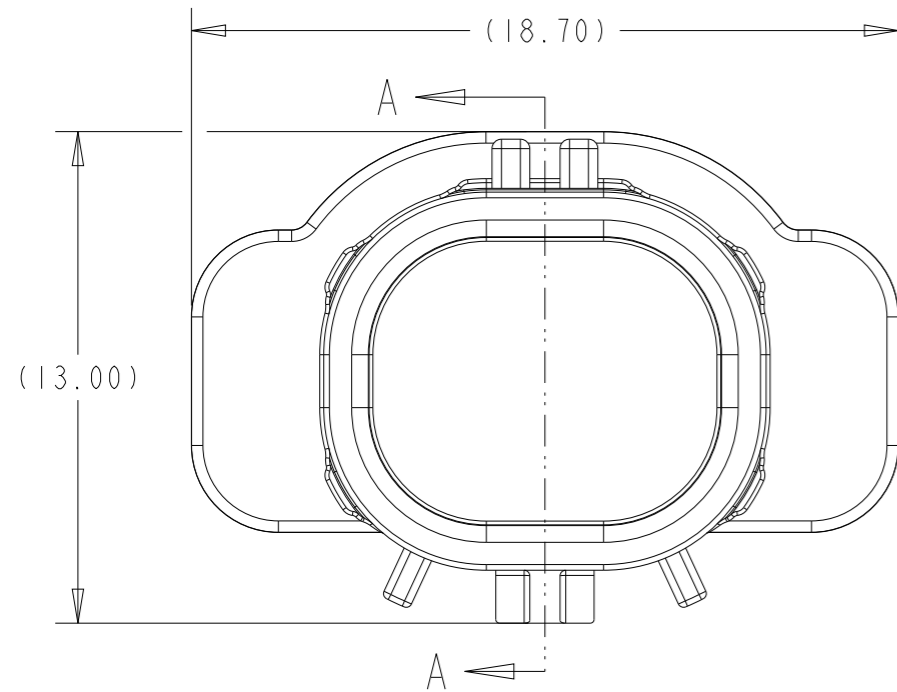


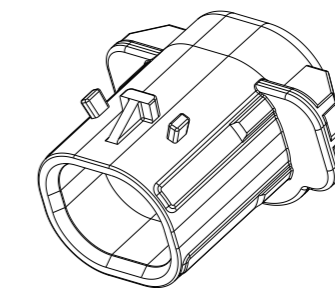
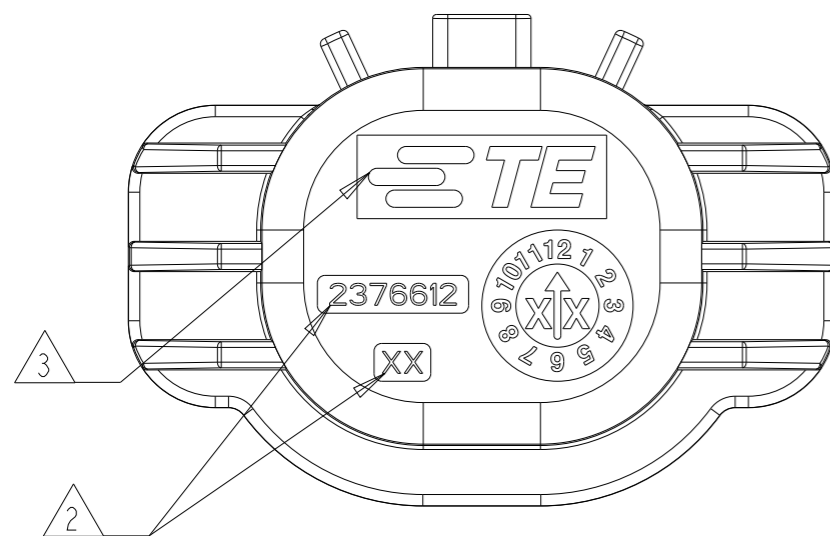
P	LTR	DESCRIPTION	DATE	DWN	APVD
		SEE SHEET 2	-	-	-



SECTION A-A

NOTE:

- 1 MATERIAL: PBT GF30
COLOR: BLACK
NO REGRIND ALLOWED
- 2 TE PART NUMBER, MOLD CAVITY ID AND REVISION CHARACTERS RAISED 0.20MM IN A RECESSED PAD DEEPENS TO 0.25MM APPROXIMATE AREA AS SHOWN.
- 3 TE CONNECTIVITY (TE) LOGO, TE P/N 1621426-8 PER TEC-202-36, USING SPI-SPE #3 FINISH PER DME SPEC IN APPROXIMATE AREA SHOWN. TE LOGO MUST BE CLEAR AND LEGIBLE
- 4 THIS PART MATES WITH 2-WAY PLUG, P/N 2292906-1, -2.
- 5 OPERATING TEMPERATURE: -40 TO +125°C



SCALE 2:1

2376612-1	932	1.40	BLACK	1
PART NO	VOLUME (mm ³)	WEIGHT (g)	COLOUR	ITEM NO

THIS DRAWING IS A CONTROLLED DOCUMENT.		DWN DEEPAK A R 31AUG2020	TE Connectivity	
DIMENSIONS: mm		CHK ANIROODH S 01SEP2020		
TOLERANCES UNLESS OTHERWISE SPECIFIED:		APVD J BARTH 02SEP2020	NAME 2 POS ENETSEAL BLIND CAP	
0 PLC ± 1 PLC ±0.1 2 PLC ±0.01 3 PLC ±0.001 4 PLC ±0.0001 ANGLES ±		PRODUCT SPEC -	RESTRICTED TO -	
MATERIAL -		APPLICATION SPEC -	SIZE A3	CAGE CODE 00779
FINISH -		WEIGHT -	DRAWING NO C-2376612	REV A
		CUSTOMER DRAWING	SCALE 5:1	SHEET 1 OF 2

