

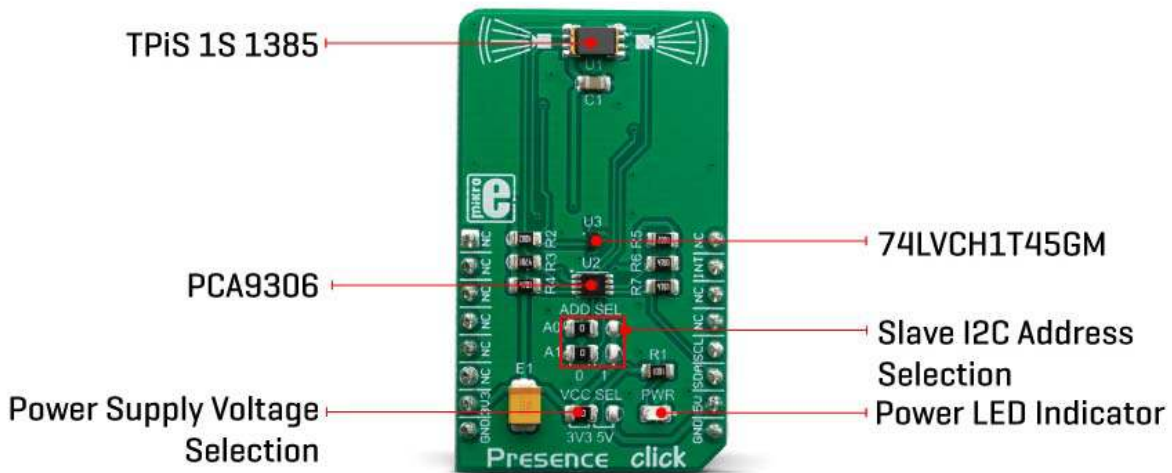
PRESENCE CLICK PID: MIKROE-3575 Weight: 18 g

Presence click is an infrared sensing Click board™ which can be used for presence sensing, motion detection, and a remote overtemperature protection. Presence click is equipped with the TPiS 1S 1385, a thermophile sensor from CaliPile™ series. The TPiS 1S 1385 has an integrated signal processing circuitry, making it perfectly suited for portable and battery-operated applications. A wide field-of-view (FOV) and high resolution allow for both high sensitivity and operation without lenses, which makes the TPiS 1S 1385 an ideal solution for low-profile and space constrained applications. Presence click is supported by a mikroSDK compliant library, which includes functions that simplify software development. This Click board™ comes as a fully tested product, ready to be used on a system equipped with the mikroBUS™ socket.

Based on a very sensitive thermopile sensor, and coupled with the advanced signal processing, the TPiS 1S 1385 can be used for more than just traditional temperature measurement: presence sensing, motion detection, and overtemperature protection algorithms can report an event over the interrupt pin, allowing many of their parameters to be configured according to specific requirements of an application. This makes the Presence click an ideal platform for the development of a range of applications including proximity wake-up of battery-powered applications, near-field human presence sensing applications, remote overtemperature protection applications, short-range temperature measurement, and similar.

HOW DOES IT WORK?

Presence click is based on the [TPiS 1S 1385](#), a device from CaliPile™ multi-function infrared sensor series, from [Excelitas Technologies](#). Despite its very compact design (4.4 x 2.6 x 1.75 mm²), it features an integrated signal processing ASIC, which allows detection of several different events, common to all the sensors from CaliPile™ series. The TPiS 1S 1385 features near-field motion detection, presence detection, and remote temperature measurement. The infrared light emitted from the object is detected by the thermopile sensor, converted by a highly sensitive 17-bit ADC, and digitally processed to allow event detection. Event detection can be fine-tuned over the I2C interface, by accessing corresponding config registers.



The CaliPile™ series sensors can utilize the embedded processing engine to detect several different events, including motion, presence, and temperature shock events. Each of these events is based on measuring the temperature and then comparing it with a value which is taken after a time interval. The device does not consume much power while processing the data; significantly more power is consumed during the sampling intervals. Since the measurement is done in just a few points of time, not much power is consumed overall. This feature allows using the sensor IC on battery-operated systems.

A particularly interesting feature is ambient temperature shock detection. This allows detecting fast changes of the temperature, which can be used to remotely detect overtemperature event in some power installations or similar inaccessible locations.

The TPiS 1S 1385 is able to perform data processing. However, the firmware running on the host MCU has to perform some calculations, taking calibration parameters from the EEPROM into account, in order to determine the temperature of the target object. The thermopile sensor reacts to IR light reflection; therefore, some external parameters

have to be taken into consideration. More information about these parameters and how to calculate the output can be found in the TPiS 1S 1385 datasheet.

The interrupt pin allows the detected event to be reported to the host MCU. This is crucial for wakeup-on-proximity applications. The interrupt will be cleared only after reading the Interrupt Status register. The interrupt pin is an active LOW output, routed to the INT pin of the mikroBUS™. It is pulled to a HIGH logic state by an onboard resistor, when not asserted.

After the power on, the device only responds to the General Call Address, which is 0x00. After it receives a general call, it loads its I2C address which is stored in the EEPROM register. Depending on the most significant bit (MSB) within this register, the states of the two physical pins A0 and A1 will replace the values of the two least significant bits (LSB). Pins A0 and A1 are routed to the SMD jumpers grouped under the ADR SEL label, allowing the developer to select an I2C slave address when more than a single device exists on the I2C bus. The datasheet of the TPiS 1S 1385 illustrates the use of the EEPROM register, along with the A0 and A1 pins. However, the Click board™ is supported by a set of mikroSDK library functions which simplify the use of this IC, along with a demo example which can be used as a reference for a custom design.

In addition to TPiS 1S 1385, Presence click features two additional ICs: the PCA9306, and the 74LVCH1T45. The PCA9306 is a bi-directional level shifter for the I2C signals, while the 74LVCH1T45 is a single bit level shifter, used for the INT line. Both ICs are produced by NXP. They allow both 3.3V and 5V MCUs to be interfaced with the Click board™, vastly expanding its usability.


SPECIFICATIONS

Type	IR,Motion,Temperature
Applications	An ideal platform for development of a range of applications, including proximity wake-up of battery-powered applications, near-field human presence sensing applications, remote overtemperature protection applications, short-range temperature measurement, and similar.
On-board modules	TPiS 1S 1385, a device from CaliPile™ multi-function infrared sensor series, from Excelitas Technologies.

Key Features	On-chip processing and event detection, 17-bit ADC signal conversion, I2C interface, programmable interrupt engine, low power consumption, ability to fine-tune event detection algorithms, etc.
Interface	I2C
Input Voltage	3.3V or 5V
Click board size	M (42.9 x 25.4 mm)

PINOUT DIAGRAM

This table shows how the pinout on **Presence click** corresponds to the pinout on the mikroBUS™ socket (the latter shown in the two middle columns).

Notes	Pin					Pin	Notes
	NC	1	AN	PWM	16	NC	
	NC	2	RST	INT	15	INT	Interrupt
	NC	3	CS	RX	14	NC	
	NC	4	SCK	TX	13	NC	
	NC	5	MISO	SCL	12	SCL	I2C Clock
	NC	6	MOSI	SDA	11	SDA	I2C Data
Power Supply	3.3V	7	3.3V	5V	10	5V	Power supply
Ground	GND	8	GND	GND	9	GND	Ground

ONBOARD SETTINGS AND INDICATORS

Label	Name	Default	Description
PWR	PWR	-	Power LED Indicator
A0, A1	A0, A1	Left	I2C slave address LSBs: left position 0, right position 1
VCC SEL	VCC SEL	Left	Power supply selection: left position 3V3, right position 5V

SOFTWARE SUPPORT

We provide a library for the **Presence click** on our [LibStock](#) page, as well as a demo application (example), developed using MikroElektronika [compilers](#). The demo can run on all the main MikroElektronika [development boards](#).

Library Description

The library initializes and defines the I2C bus driver and drivers that offer a choice for writing data in register and reads data from register. The library includes function for read Ambient and Object Temperature in C. The user also has the function for start eeprom process for read and storage calibration coefficients, function for general call address and functions for get Interrupt state.

Key functions:

- `uint8_t presence_eepromProcess()` - EEPROM process.
- `float presence_ambientTemperature()` - Ambient Temperature.
- `float presence_objectTemperature()` - Object Temperature.

Examples description

The application is composed of the three sections :

- System Initialization - Initialization I2C module and sets INT pin as INPUT.
- Application Initialization - Initializes driver init, start eeprom process and configuration chip for measurement..
- Application Task - Check whether a new event (Motion, Presence or Temp threshold exceeded) is detected. Waits for valid user input and executes functions based on set of valid commands.

Commands : 'a' - Ambient Temperature 'o' - Object Temperature

```

void applicationTask()
{
    uint8_t intStatus;
    uint8_t dataReady_;
    char receivedData_;
    char demoText[ 50 ];
    float Tamb;
    float Tobj;

    dataReady_ = UART_Rdy_Ptr( );
    presence_readData(_PRESENCE_REG_INTERRUPT_STATUS, &intStatus, 1);

    if (dataReady_ != 0)
    {
        receivedData_ = UART_Rd_Ptr( );

        switch (receivedData_)
        {
            case 'a' :
            {
                Tamb = presence_ambientTemperature();
                FloatToStr(Tamb, demoText);
                mikrobus_logWrite("---- Ambient Temperature: ", _LOG_TEXT);
                mikrobus_logWrite(demoText, _LOG_LINE);
                break;
            }
            case 'o' :
            {
                Tobj = presence_objectTemperature();
                FloatToStr(Tobj, demoText);
                mikrobus_logWrite("---- Object Temperature: ", _LOG_TEXT);
                mikrobus_logWrite(demoText, _LOG_LINE);
                break;
            }
        }
    }
}

```

```
if((intStatus & 0x08) != 0)
{
    mikrobus_logWrite("--- Presence detected! ---", _LOG_LINE);
}
else if((intStatus & 0x04) != 0)
{
    mikrobus_logWrite("--- Motion detected! ---", _LOG_LINE);
}
else if((intStatus & 0x10) != 0)
{
    mikrobus_logWrite("--- Temp threshold exceeded! ---", _LOG_LINE);
}
}
```

The full application code, and ready to use projects can be found on our [LibStock](#) page. Other mikroE Libraries used in the example:

- [I2C](#)
- [UART](#)
- [Conversions](#)

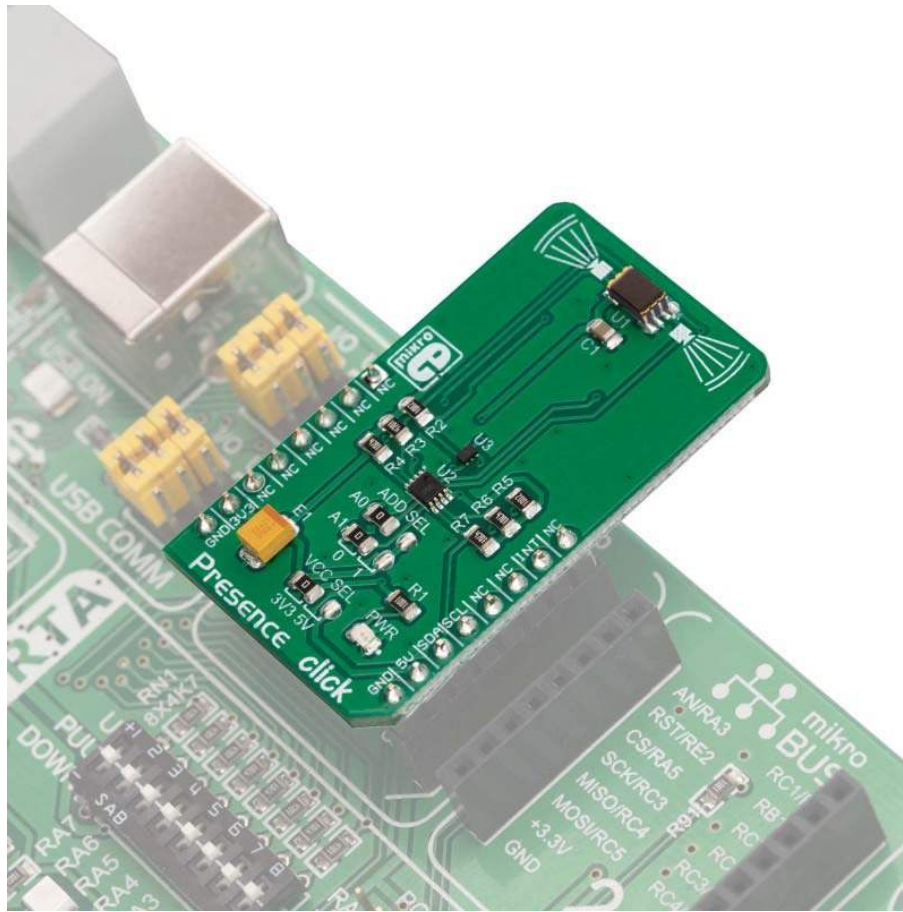
Additional notes and informations

Depending on the development board you are using, you may need [USB UART click](#), [USB UART 2 click](#) or [RS232 click](#) to connect to your PC, for development systems with no UART to USB interface available on the board. The terminal available in all MikroElektronika [compilers](#), or any other terminal application of your choice, can be used to read the message.

MIKROSDK

This click board is supported with [mikroSDK](#) - MikroElektronika Software Development Kit. To ensure proper operation of mikroSDK compliant click board demo applications, mikroSDK should be downloaded from the [LibStock](#) and installed for the compiler you are using.

For more information about mikroSDK, visit the [official page](#).



<https://www.mikroe.com/presence-click/6-5-19>