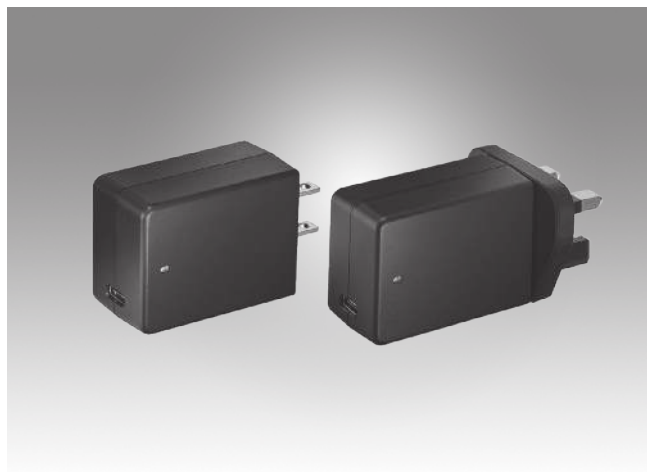


PSA-A45W Series

45 Watt Power Delivery USB-C Adapter



Features

- Compact design with 45W output
- Enhanced with Power Delivery (PD)
- Automatically detects 5/9/12/15/20V DC output voltage
- Equipped with universal USB Type C output interface
- Meets DOE VI & CoC tier 2 requirements
- Built-in OVP/OCP/SCP/OTP output protection
- Available with both US & UK plugs



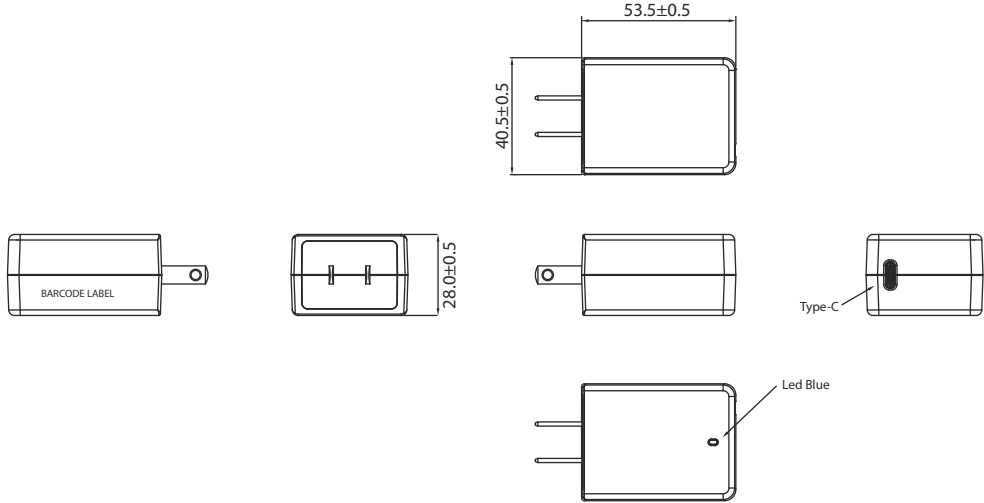
Specifications

Input	Model	PSA-A45WM-U					PSA-A45WM-E					
	Input Voltage	90 - 264 V _{AC}										
	Input Frequency	47 - 63 Hz										
	Input Current (maximum)	90V _{AC} @ < 1.20 A										
	Max. Inrush Current	20A at 230Vac, cold start @ 25 °C and full load										
	Leakage Current	< 250 uA @ 264Vac										
Output	Output Power	45 Watts										
	Output Voltage	5V _{DC}	9V _{DC}	12V _{DC}	15V _{DC}	20V _{DC}	5V _{DC}	9V _{DC}	12V _{DC}	15V _{DC}	20V _{DC}	
	Rated Current	3A	3A	3A	3A	2.25A	3A	3A	3A	3A	2.25A	
	Max. Ripple & Noise (mVp-p)	350 mVp-p @ 20 MHz										
	Line Regulation	±3%										
	Load Regulation	±5%										
Protection	Rise Time	30 ms max										
	OVP (Over Voltage Protection)	7.5V max	13V max	15.6V max	19.5V max	26V max	7.5V max	13V max	15.6V max	19.5V max	26V max	
	OCP (Output Peak Current Protection, Output Auto Recovery)	3.3 ~ 3.9A				2.4 ~ 2.9A		3.3 ~ 3.9A			2.4 ~ 2.9A	
	SCP (Short Circuit Protection, Output Auto Recovery)	Latch-off without damage										
Environment	OTP (Over Temperature Protection)	100 °C ± 10%										
	Operating Temperature	0 ~ +40 °C										
	Operating Humidity	8 to 80% RH, Non-condensing										
	Storage Temperature	-30 ~ 60 °C										
	Operating Altitude	2,000 meters										
	Shock Test (Non-Operating)	IEC60068-2-27, 30G (300m/S ²) for a duration of 18ms										
Insulation	Vibration Test (Non-Operating)	IEC60068-2-6, 5Hz to 500Hz @ 50m/S ² (5G peak); 30 min per axis for all X, Y, Z direction										
	Withstand Voltage	4242V _{DC} , 1 minute (Primary to Secondary)										
Safety & EMC	Insulation Resistance	500V/10M										
	Safety	cUL/UL/CB IEC 62368-1, BSMI					CB/PSB IEC 62368-1					
	EMC Emission	FCC Part 15 Class B, EN55032(CISPR32), EN61000-3-2, EN61000-3-3										
Mechanical	EMC Immunity	EN55024, IEC61000-4-2,3,4,5,6,8,11										
	Dimension (W x H x D)	40.5 x 53.5 x 28.0 mm (15.9 x 21.0 x 11.0 inches)					40.5 x 60.5 x 28.0 mm (15.9 x 23.8 x 11.0 inches)					
	Unit Weight	94 g					101 g					
	Inlet Plug	North America, 2-pin					UK, 3-pin					
Reliability and Warranty	DC Output Connector	USB Type C										
	MTBF (hours)	300,000 min. (based on SR-332)										
	Warranty	3 Years										

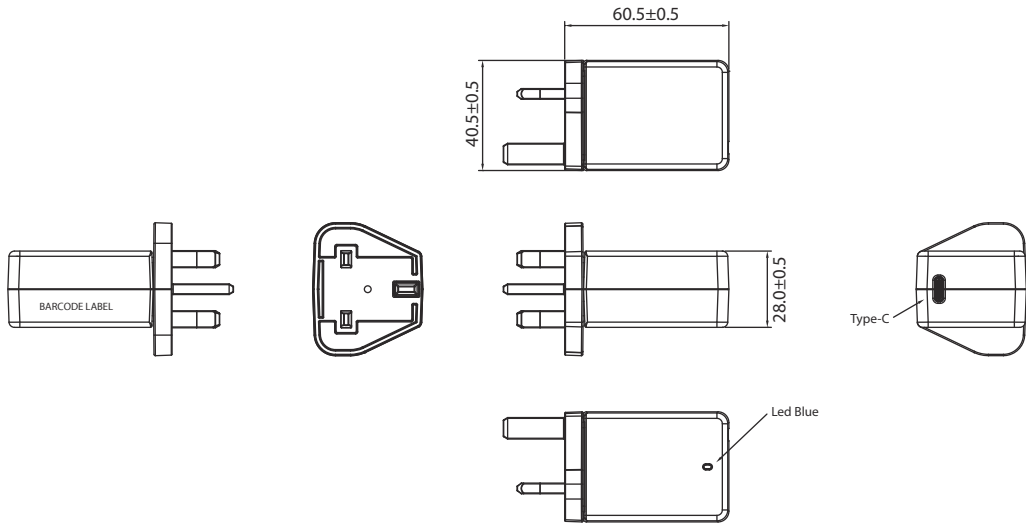
Dimensions

Unit: mm

PSA-A45WM-U



PSA-A45WM-E



Ordering Information

Model Number	Description
PSA-A45WM-U	PD Adapter AC to DC 100-240V 45W USB-C (US Type Plug)
PSA-A45WM-E	PD Adapter AC to DC 100-240V 45W USB-C (UK Type Plug)