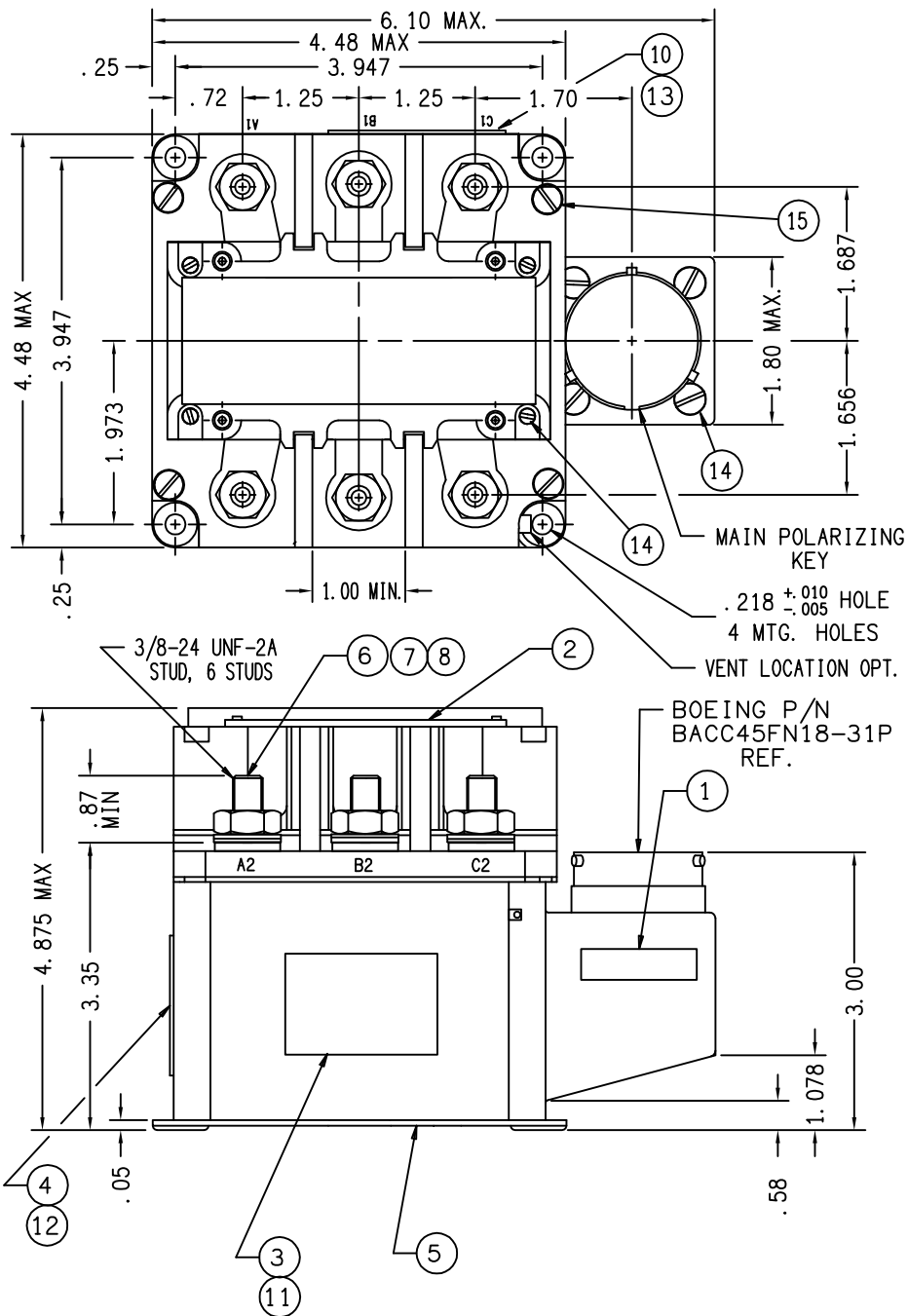


- NOTES:
 1. TERMINAL COVER ITEM NO. 2 REMOVED FROM TOP VIEW.
 2. MOUNTING SURFACE SHALL PROVIDE ELECTRICAL GROUND.
 3. FAA/PMA PLATE (AND OVERLAY) NOT REQUIRED ON UNITS SUPPLIED TO ORIGINAL EQUIPMENT MANUFACTURERS.

FAA-PMA

REVISIONS		RELEASED	APPROVED
REV	DESCRIPTION	DATE	
R	24520 ADD ITEMS 11 THRU 15	93/09/07	WS
T	25900 ADDED DASH NOS TO FIND NOS 11, 12, & 13	94/04/22	RS
U	35452 NOTE 3 ADDED	98/05/04	RS
V	39518 "BOEING" ADDED TO VIB SPEC & CONNECTOR P/N, 4.48 MAX WAS 4.45, 4.875 WAS 5.025	99/05/11	RS
W	12-003359 MAX WEIGHT WAS 3.85 LBS	12/01/27	CB



CONSTRUCTION

MAIN CONTACTS
 CONFIGURATION
 VOLTAGE
 CURRENT RES.
 RES.

GASKET SEALED (VENTED)

3 PST N.O. (DOUBLE BREAK)
 115/200 VOLTS FREQ. 400 HZ
 260 AMP 115/200 VAC CONTINUOUS
 350 AMP 115/200 VAC 15 SEC
 2000 AMP

INTERRUPT
 AUXILIARY CONTACTS
 CONFIGURATION
 VOLTAGE
 CURRENT

5 SPST N.O., 9 SPST N.C.

AMPS. VOLTS
 1 AMP 7.5 AMP
 240 VAC 400 HZ 30 VDC

COIL DATA
 DUTY CYCLE
 OPERATING VOLTAGE
 PICKUP
 PICKUP MAX.
 NOMINAL
 DROPOUT

CONTINUOUS (ECONOMIZING)

18 TO 30 VDC
 18 VOLTS
 28 VOLTS
 1 TO 7 VDC

RESISTANCE PICKUP
 HOLD

10 OHMS MIN.
 50 OHMS MIN.

ENVIRONMENTAL DATA
 OPERATING TEMP.
 VIBRATION

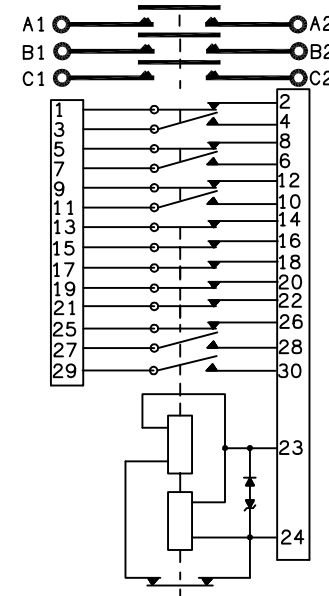
-54°C MIN. +71°C MAX.
 PER BOEING D6-13014, AREA 1. CAT. A

SHOCK
 ALTITUDE
 OPERATING TIME
 PICKUP
 DRPOUT

PER MIL-E-5272 PROC. V
 50,000 FT. MAXIMUM
 50 MSEC MAX. AT 18VDC TO 30VDC
 50 MSEC MAX. AT 30VDC

LIFE ELECTRICAL
 LIFE MECHANICAL
 WEIGHT MAX.

50,000 CYCLES MIN.
 100,000 CYCLES MIN.
 4.00 LBS. MAX



15	AR	54100-001	SILASTIC			
14	AR	54102-001	GLYPTOL			
13	1	39529-024	OVERLAY-FAA/PMA			
12	1	39529-049	OVERLAY-WIRING DIAGRAM			
11	1	39529-009	OVERLAY-NAME PLATE			
10	1	58400-029	PLATE-FAA/PMA			
9						
8	6	51807-230	WASHER-LOCK, .375 X.687C .094 SPT	MS35338-141	ST. STEEL	
7	6	51704-010	WASHER, .390 X.625 X.032 FL.	AN960C616L	ST. STEEL	
6	6	50407-370	NUT, 3/8-24 X .562 X .328	MS51972-3	ST. STEEL	
5	1	36909-010	CONTACTOR ASSEMBLY-PRI.			
4	1	36908-001	PLATE-WIRING DIAGRAM			
3	1	36907-001	PLATE-NAME			
2	2	36456-010	TERMINAL COVER			
1	1	25695-001	WARNING PLATE			
FIND NO	QTY REQD	PART OR IDENTIFYING NO	NOMENCLATURE OR DESCRIPTION	FSCM NO	DRAWING OR SPECIFICATION	MATERIAL OR NOTE

UNLESS OTHERWISE SPECIFIED
 DIMENSIONS ARE IN INCHES
 TOLERANCES ON

REF BOEING
 60B40021-3



Hartman Division, 175 N. DIAMOND STREET MANSFIELD, OHIO 44902

2 PL DEC. 3 PL DEC. ANGLES

DR BY RLS 99/05/27
 CHK BY RS 99/05/27
 ENGR WER 99/05/27
 MFG MB 99/05/28

CONTACTOR-3PST N. O.
 260 AMP 115/200V 400HZ₀₉₃

SIZE CODE IDENT
 C 74063

DWG NO. B-429W

SCALE NONE SHEET

REF TE P/N 1616005-6