

## KEY FEATURES

- Power Module for PCB Mountable
- High Efficiency up to 90%
- 4:1 Wide Input Range
- Without Tantalum Capacitors Inside
- Low Ripple and Noise
- Remote ON/OFF Control
- Operating Temperature: -40°C...+85°C (with derating)
- Very Small Size :1.02 x 1.02 x 0.45 Inches
- Screw Terminal for Option
- Safety Meet UL / IEC / EN 62368-1 & 60950
- 3-Years Product Warranty



## ELECTRICAL SPECIFICATIONS

All specifications valid at normal input voltage, full load and +25°C after warm-up time unless otherwise stated.

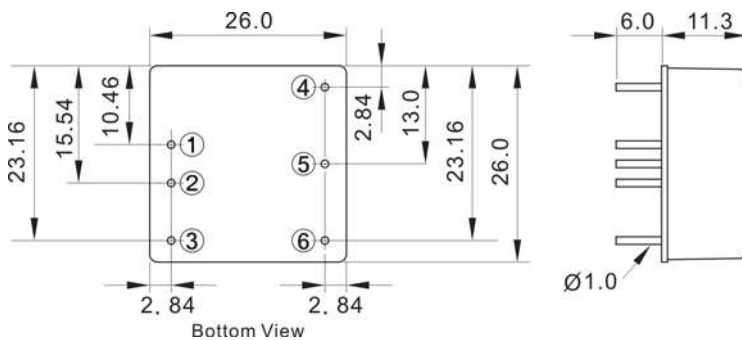
Model No.	with Heatsink	SW30F-24-5S X SW30F-48-5S X	SW30F-24-12S X SW30F-48-12S X	SW30F-24-15S X SW30F-48-15S X	SW30F-24-24S X SW30F-48-24S X
Model No.	without Heatsink	SW30F-24-5S SW30F-48-5S	SW30F-24-12S SW30F-48-12S	SW30F-24-15S SW30F-48-15S	SW30F-24-24S SW30F-48-24S
Max Output Wattage (W)		30 W			
Input	Voltage (V.DC.)	SW30F-24-xS X, SW30F-24-xS: 24V (9-36V) SW30F-48-xS X, SW30F-48-xS: 48V (18-75V)			
	Input Filter	C type			
Output	Voltage (V.DC.)	5V	12V	15V	24V
	Trim Voltage Range	±10%			
	Voltage Accuracy	±2%			
	Current (mA) max	6000	2500	2000	1250
	Line Regulation (LL-HL) (typ.)	±0.5%			
	Load Regulation (10-100%) (typ.)	±1%			
	Minimum Load	0%			
	Capacitor Load (max.)	6,000uF	2,500uF	2,000uF	1,000uF
	Ripple & Noise (typ.)	100mV	150mV		
	Efficiency	24V (9-36V)	88.5%	89%	89%
48V (18-75V)		89%	89.5%	89.5%	90%
Protection	Over Power Protection	Auto-recovery			
	Over Voltage Protection	Zener diode clamp			
	Short Circuit Protection	Auto-recovery			
Isolation	Voltage	2250 VDC			
	Resistance	10 <sup>8</sup> ohms			
	Capacitance	1500 pF			
Environment	Operating Temperature	-40°C...+85°C (with derating)			
	Storage Temperature	-55°C...+105°C			
	Case Temperature (Note 2)	+105°C max.			
	Temperature Coefficient	±0.05%/°C			
	Humidity	95% RH			
MTBF	>800,000 h @ 25°C (MIL-HDBK-217F)				
Physical	Dimensions (L x W x H)	1.02 x 1.02 x 0.45 Inches ( 26.0 x 26.0 x 11.3 mm ) Tolerance ±0.5 mm			
	Case Material	Five-side shielded Aluminum with Non-Conductive base, Black Anodize			
	Weight	SW30F-x-xS X : 23 g (with Heatsink)			
		SW30F-x-xS : 17 g (without Heatsink)			
Cooling Method	Free-air convection				
Remote ON/OFF	DC-DC ON	Open or +5V ~ 15V			
	DC-DC OFF	When -DC IN and ON/OFF CTL is Short (or 0 VDC ~ +0.5VDC)			
EMC	EMI (Conducted & Radiated Emission) (Note 3)	EN 55032 class A			

**NOTE**

1. Ripple & Noise are measured at 20MHz of bandwidth with 0.1uF & 47uF parallel capacitor.
2. Maximum case temperature under any operating condition should not be exceeded 105°C.
3. For EMI test, Please refer to below.
4. Please refer to our PDF file "DC-DC Application" on our website: [www.archcorp.com.tw](http://www.archcorp.com.tw)

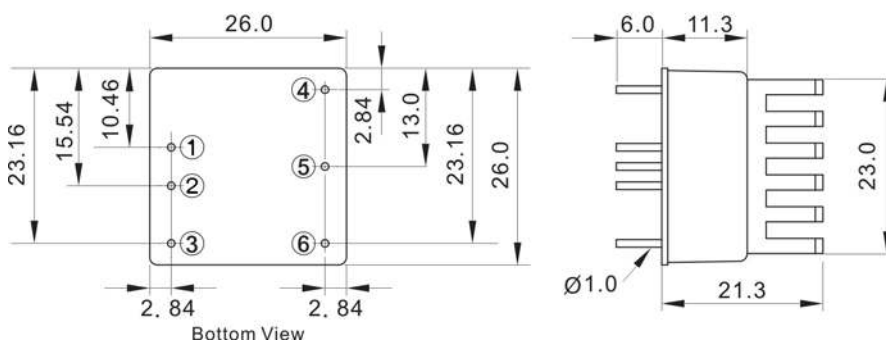
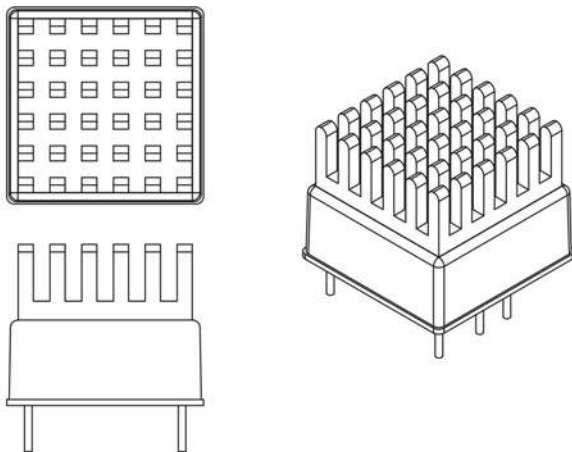
**MECHANICAL DIMENSIONS**

## SW30F-x-xS (without Heatsink)

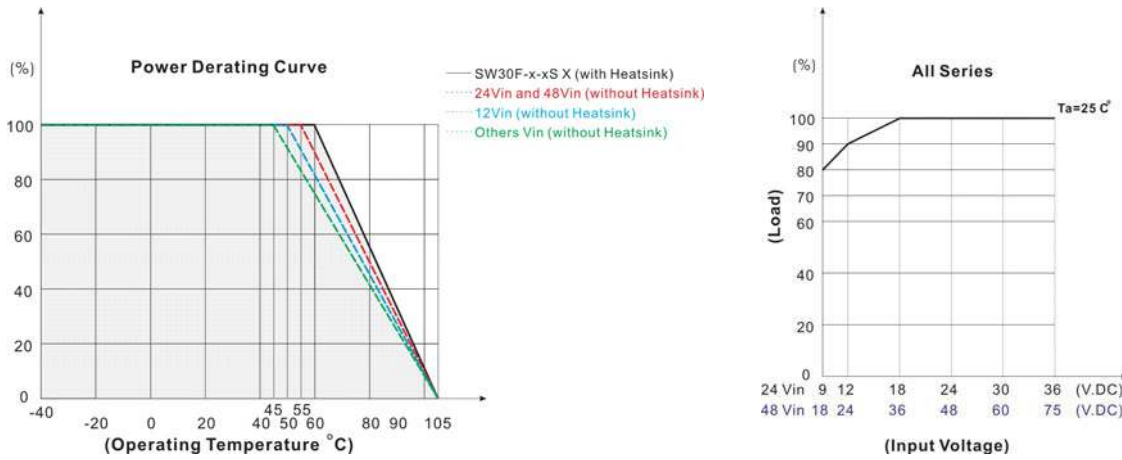


PIN#	Single
1	+DC IN
2	-DC IN
3	CTRL
4	+DC OUT
5	TRIM
6	-DC OUT

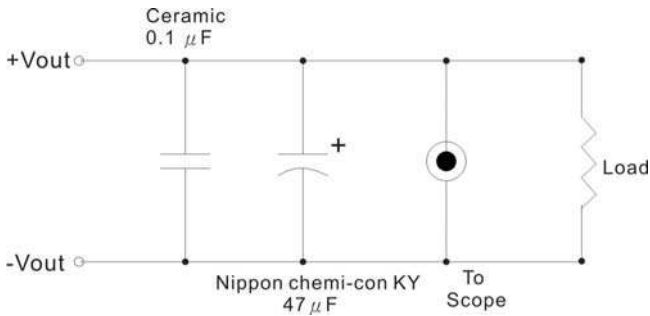
## SW30F-x-xS X (with Heatsink)



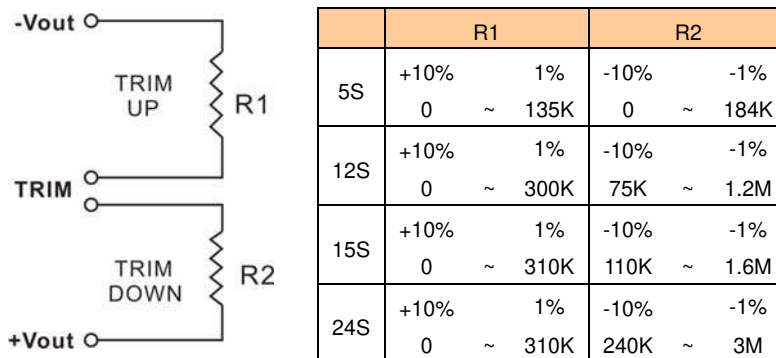
## DERATING



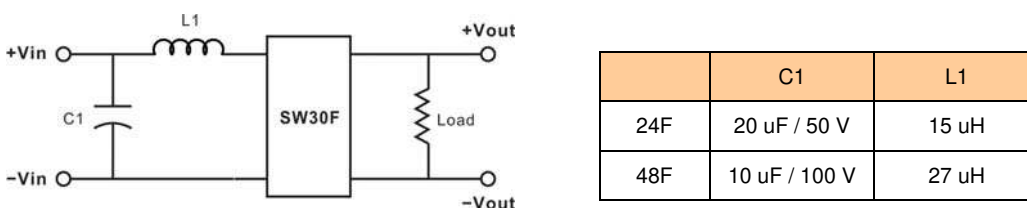
## OUTPUT NOISE



## TRIM

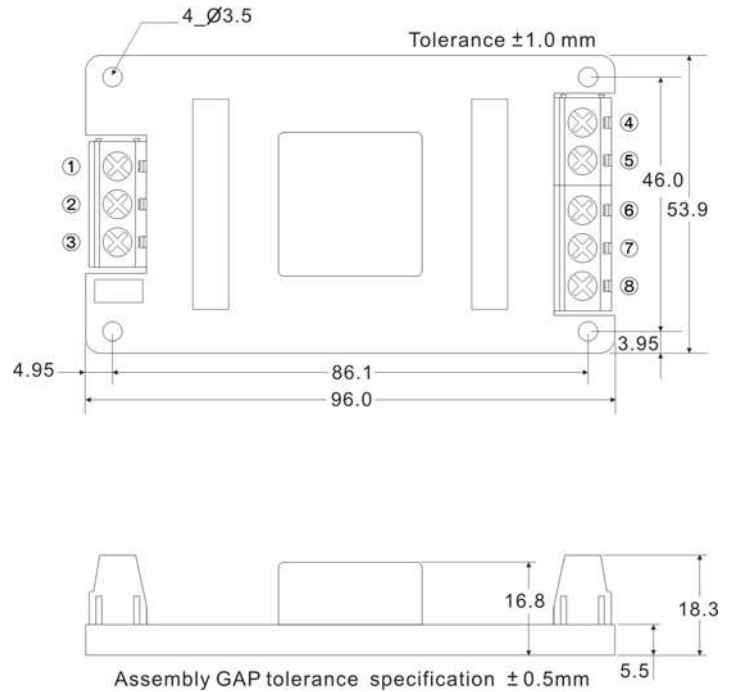


## EMI



**SCREW TERMINAL**
**SW30F-A2**


PIN#	Single
1	CTRL
2	-DC IN
3	+DC IN
4	-DC OUT
5	NO CONNECT
6	TRIM
7	NO CONNECT
8	+DC OUT


**SW30F-A5**


PIN#	Single
1	CTRL
2	-DC IN
3	+DC IN
4	-DC OUT
5	NO CONNECT
6	TRIM
7	NO CONNECT
8	+DC OUT

