

4

3

2

1

THIS DRAWING IS UNPUBLISHED.

RELEASED FOR PUBLICATION

© COPYRIGHT

ALL RIGHTS RESERVED.

LOC DIST


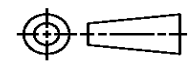
REVISIONS

P	LTR	DESCRIPTION	DATE	DWN	APVD
	C1	ECR-13-001905	31JAN2013	XZ	SX

REPLACED BY OCEAN STYLE APPLICATOR PART NUMBER 2151071-1

FOR REPLACEMENT PARTS FOR APPLICATOR 1426555
REFER TO ADDITIONAL PAGE(S). SPARE PARTS KIT (IF LISTED)
WILL REMAIN AVAILABLE.

THE REPLACEMENT OCEAN STYLE APPLICATOR HAS THE
SAME TERMINATOR/PRESS INTERFACE AS APPLICATOR
1426555

THIS DRAWING IS A CONTROLLED DOCUMENT.		DWN X. ZHAO	 TE Connectivity			
DIMENSIONS:		CHK S. XI				
		APVD S. XI	NAME			
TOLERANCES UNLESS OTHERWISE SPECIFIED:		PRODUCT SPEC	SIDE FEED HDI APPLICATOR			
0 PLC ±		APPLICATION SPEC	SIZE	CAGE CODE	DRAWING NO	RESTRICTED TO
1 PLC ±			A3		©- 1426555	
2 PLC ±						
3 PLC ±						
4 PLC ±						
ANGLES ±						
MATERIAL		FINISH	WEIGHT	SCALE	SHEET 1 OF 2	REV C1

Dimensioning and tolerancing per ASME Y14.5M-2009

A

B

D

D

C

B

A

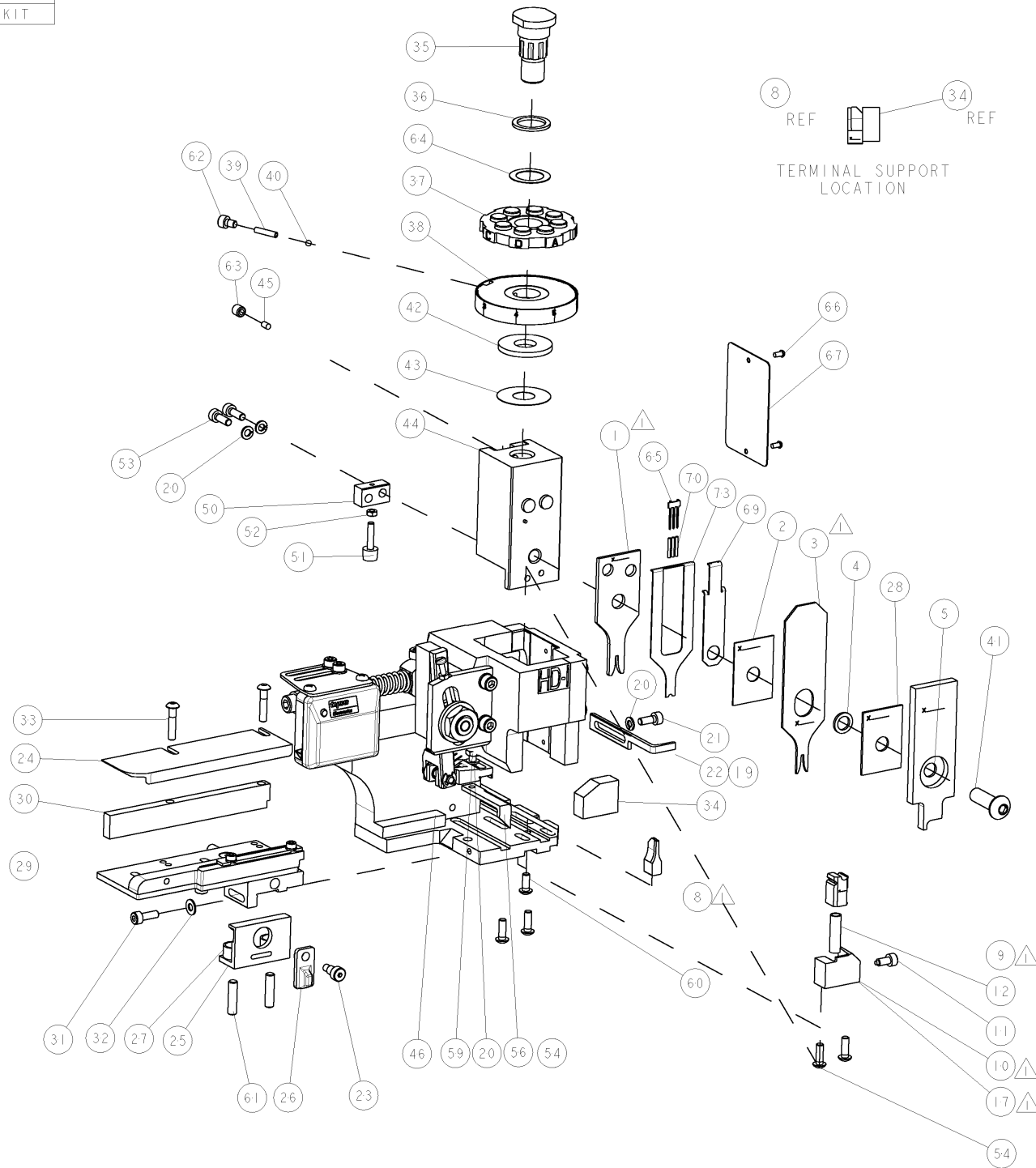
Dimensioning and tolerancing per ASME Y14.5M-2009

PART NUMBER	REV	TERMINATOR	FEED TYPE	DESCRIPTION
1426555-1	C	LEADMAKER	MECH POST FEED	CUTS CARRIER
1426555-2	C	BENCH	MECH PRE FEED	CUTS CARRIER
1426555-6	C	LEADMAKER	MECH POST FEED	CONTINUOUS CARRIER
7-1426555-1	C	LEADMAKER	MECH POST FEED	-1 AND SPARE PARTS
7-1426555-2	C	BENCH	MECH PRE FEED	-2 AND SPARE PARTS
7-1426555-6	C	LEADMAKER	MECH POST FEED	-6 AND SPARE PARTS
7-1426555-7	A	-	-	SPARE PARTS KIT

CRIMP DATA		TE TERMINAL		TE CRIMP SPECS	
TERMINAL NAME: D-2 CONTACT 'M' SIZE					
CRIMP	SIZE	TYPE	RANGE		
WIRE	1.57 [0.062 IN]	F	0.30-0.85mm2 OR 22-18AWG		
INSUL	1.88 [0.074 IN]	F	1.26-1.90 [0.050-.075 IN]		
WIRE STRIP LENGTH 2.9-3.9 mm [0.114-.154 in]		APPL INSTRUCTIONS 408-8322			
TERMINAL APPL SPEC 114-5258			FEED 8.10 [0.319 IN]		
TERMINALS APPLIED					
1318105	-	-	-	-	-
1318109	-	-	-	-	-
-	-	-	-	-	-
-	-	-	-	-	-
-	-	-	-	-	-
WIRE SIZE	CRIMP HEIGHT	PIN PN & LENGTH [IN]			
0.85mm2 OR 18AWG	1.19 ± 0.05 [0.047 ± 0.002 IN]	3-354779-0 [0.3140]			
0.68mm2	1.05 ± 0.05 [0.041 ± 0.002 IN]	4-354779-1 [0.3195]			
0.50mm2 OR 20AWG	1.05 ± 0.05 [0.041 ± 0.002 IN]	4-354779-1 [0.3195]			
0.30mm2 OR 22AWG	0.94 ± 0.05 [0.037 ± 0.002 IN]	4-354779-9 [0.3235]			



- RECOMMENDED SPARE PARTS
- GREASE RAM, CAM, CAM FOLLOWER AND FEED ROD LIGHTLY
 - LUBRICATE DAILY PER THE APPLICATOR INSTRUCTION SHEET SUPPLIED WITH THE APPLICATOR



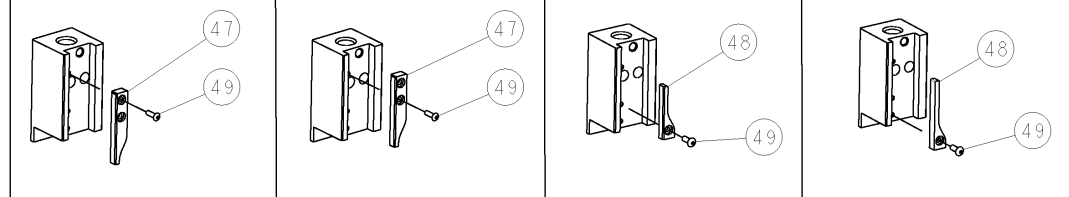
SET UP GAGE
458637-3

REVISONS		DATE	BY	APPD
A	SEE ECO-05-003759	13JUN2005	LJL	FB
B	ECR-05-016832	30NOV2005	RK	GB
C	ECR-08-017999	17JUL2008	MY	TE

QTY	PART NO	DESCRIPTION	ITEM NO						
-	1490525-3	DEPRESSOR, WIRE	73						
-	-	-	72						
-	1338705-1	DOCUMENTATION PACKAGE	71						
-	2-23147-2	SPRING, COMPRESSION	70						
-	1490524-1	DEPRESSOR, SPACER	69						
-	-	-	68						
-	461264-1	PLATE, IDENTIFICATION	67						
-	21017-2	SCREW, DRIVE	66						
-	1424350-1	HOLDER, PIN, WIRED	65						
-	986950-1	WASHER, FLAT PRECISION	64						
-	3-18031-0	SCR, SET, CUP POINT M6 X 6.0	63						
-	18023-9	SCR, SKT HD CAP M4 X 6.0	62						
-	2-18032-5	SCR, SET, FLT POINT M5 X 20.0	61						
-	18024-7	SCR, BTN SKT HD CAP (M4 X 10.0)	60						
-	5-18022-2	SCR, HEX HD CAP M4 X 8.0	59						
-	-	-	58						
-	-	-	57						
-	1338685-1	PAWL, FEED	56						
-	-	-	55						
-	18024-8	SCR, BTN SKT HD CAP (M4 X 12.0)	54						
-	1-18023-2	SCR, SKT HD CAP M4 X 12.0	53						
-	18030-1	NUT, HEX, REG M3	52						
-	811242-5	BUMPER, HOLD DOWN	51						
-	690753-2	SPACER, TONKER	50						
-	18024-3	SCR, BTN SKT HD CAP (M3 X 10.0)	49						
-	1338675-1	CAM, UNIVERSAL PRE FEED	48						
-	1338676-1	CAM, UNIVERSAL POST-FEED	47						
-	1320999-3	APPLICATOR SUBASSEMBLY, HDI	46						
-	690191-1	PLUG, NYLON	45						
-	1338660-5	RAM	44						
-	690125-1	SHIM SUB-ASSY	43						
-	690124-1	WASHER, RAM (.115)	42						
-	2-18024-6	SCR, BTN SKT HD CAP (M8 X 25.0)	41						
-	23241-1	BALL, STEEL	40						
-	2-22278-7	SPRING, COMPRESSION	39						
-	1320922-1	DISC, ADJUST, INSULATION CRIMP	38						
-	354777-1	WIRE DISC, ASSEMBLY	37						
-	22480-5	SPRING, COMPRESSION	36						
-	690212-1	POST, RAM	35						
-	1320934-1	SUPPORT, TERMINAL	34						
-	1-18024-0	SCR, BTN SKT HD CAP (M4 X 20.0)	33						
-	18027-2	WASHER, FLAT, REG M4	32						
-	1-18023-2	SCR, SKT HD CAP M4 X 12.0	31						
-	1320908-3	SPACER, STRIP GUIDE	30						
-	1633073-1	STRIP GUIDE ASSEMBLY	29						
-	1-455888-0	SPACER, CRIMPER	28						
-	1-22284-0	SPRING, COMPRESSION	27						
-	356835-1	LEVER, DRAG RELEASE	26						
-	240792-1	DRAG, TERMINAL	25						
-	1320928-2	PLATE, STRIP GUIDE	24						
-	980371-4	SCR, SKT HD SHLDR 5.0 DIA X 6.0	23						
-	690472-2	STRIPPER	22						
-	1-18023-1	SCR, SKT HD CAP M4 X 10.0	21						
-	18025-2	WASHER, SPRG LOCK, REG M4	20						
-	690472-1	STRIPPER	19						
-	-	-	18						
-	1338684-1	HOLDER, SHEAR, NO-CUT	17						
-	-	-	16						
-	-	-	15						
-	-	-	14						
-	-	-	13						
-	3-22280-3	SPRING, COMPRESSION	12						
-	356885-4	STOP, SHEAR	11						
-	1320921-1	SHEAR HOLDER, FRONT, CUT	10						
-	462006-1	FLOATING SHEAR, FRONT	9						
-	3-1333202-3	ANVIL, COMBINATION	8						
-	-	-	7						
-	-	-	6						
-	2-455889-0	DEPRESSOR, SHEAR	5						
-	2-238011-0	BLOCK, CRIMPER SPACER	4						
-	3-1213077-9	CRIMPER, INSULATION PREMIUM	3						
-	455888-5	SPACER, CRIMPER	2						
-	1-456403-6	CRIMPER, WIRE PREMIUM	1						
-77	-76	-72	-71	-6	-2	-1	PART NO	DESCRIPTION	ITEM NO
-	-	-	-	-	-	-	-	-	84
-	-	-	-	-	-	-	-	-	83
-	-	-	-	-	-	-	-	-	82
-	-	-	-	-	-	-	-	-	81
-	-	-	-	-	-	-	-	-	80
-	-	-	-	-	-	-	-	-	79
-	-	-	-	-	-	-	-	-	78
-	-	-	-	-	-	-	-	-	77
-	-	-	-	-	-	-	-	-	76
-	-	-	-	-	-	-	-	-	75
-	-	-	-	-	-	-	-	-	74
-	-	-	-	-	-	-	-	-	73

VIEW B ROTATED 180°

POST-FEED 40mm STROKE | POST-FEED 30mm STROKE | PRE-FEED 30mm STROKE | PRE-FEED 40mm STROKE



AMP 4585 REV 31MAR2008

Prof/ENGINEER DRAWING