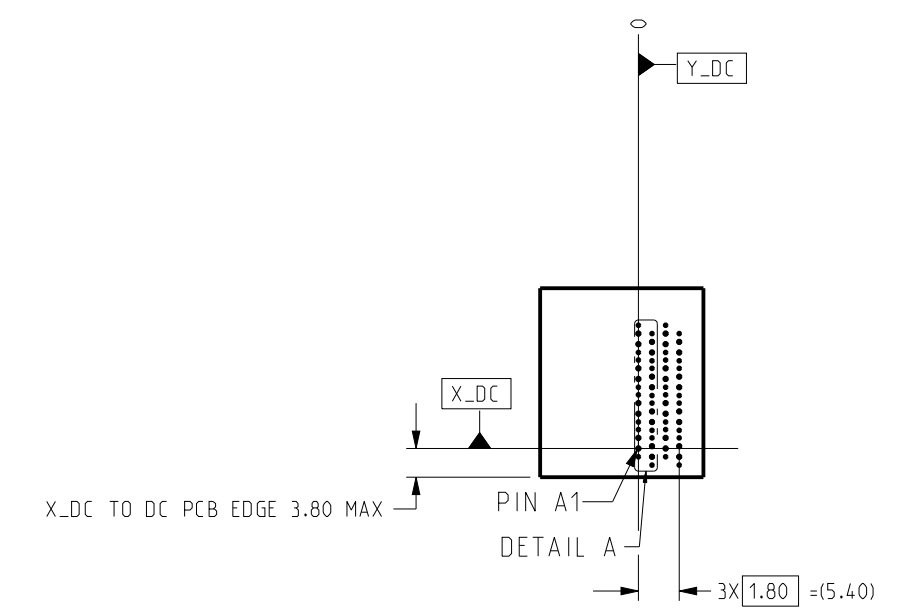
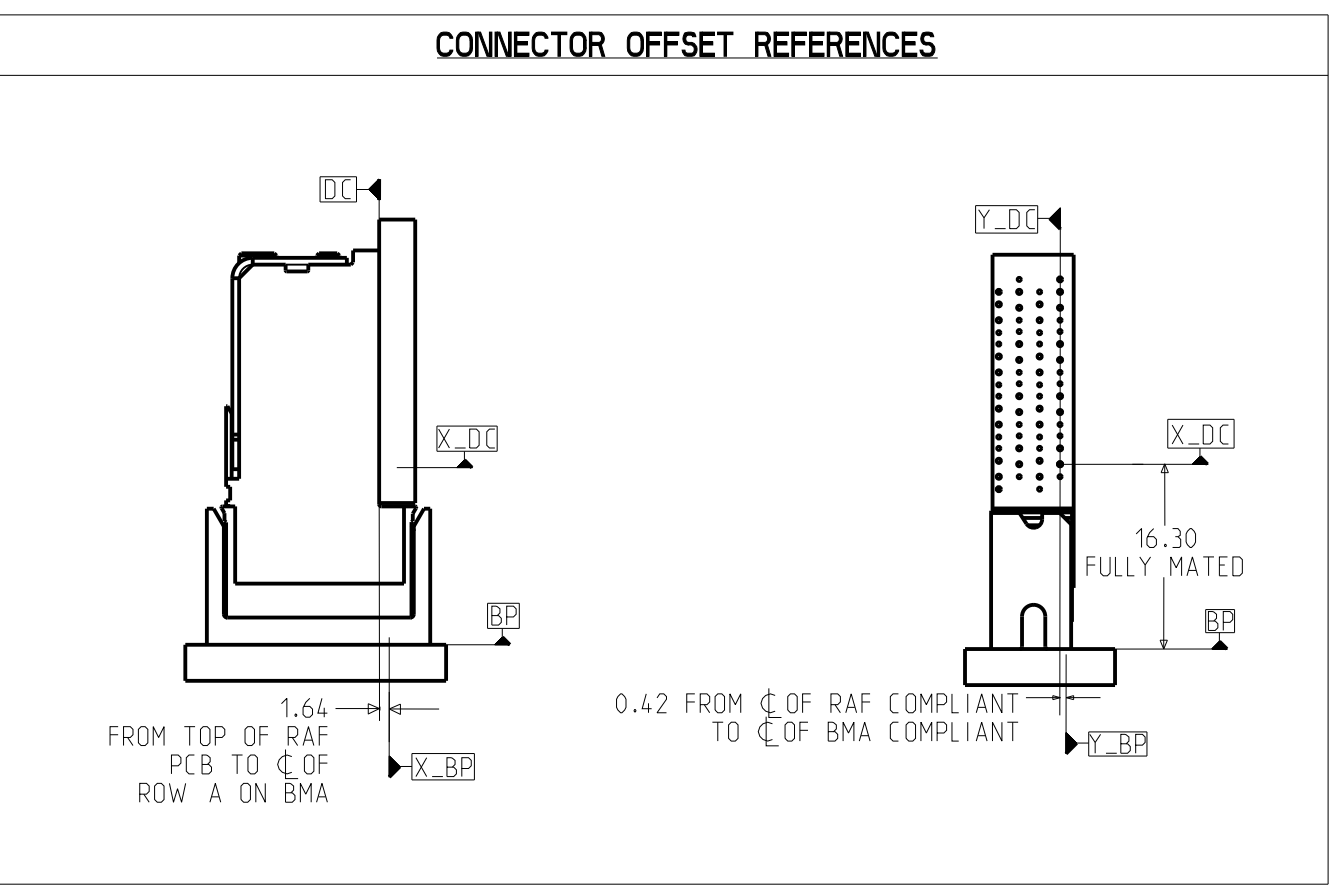
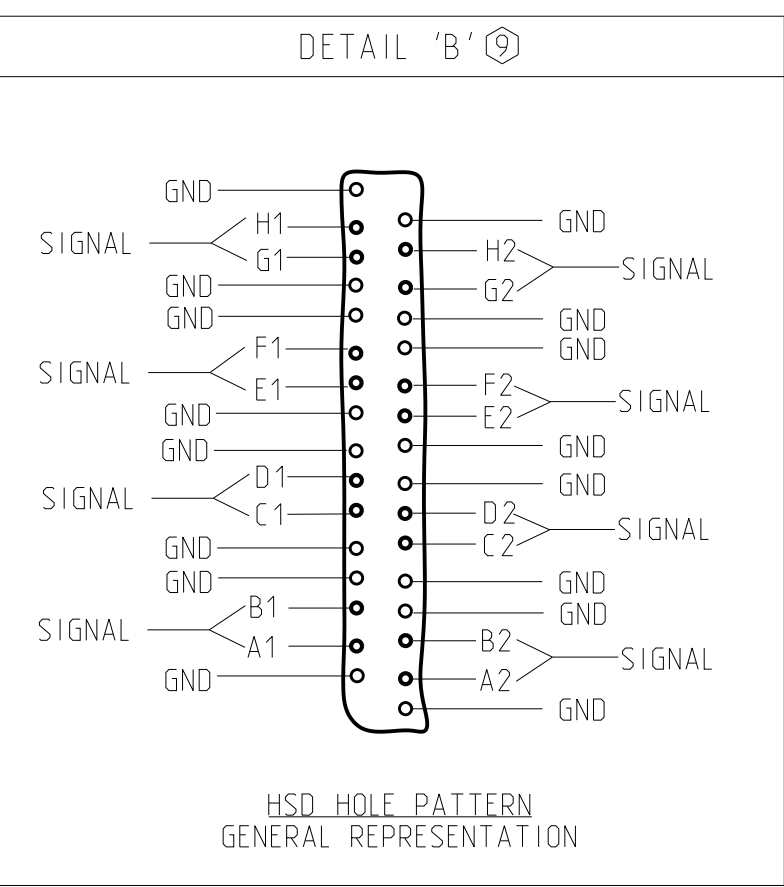
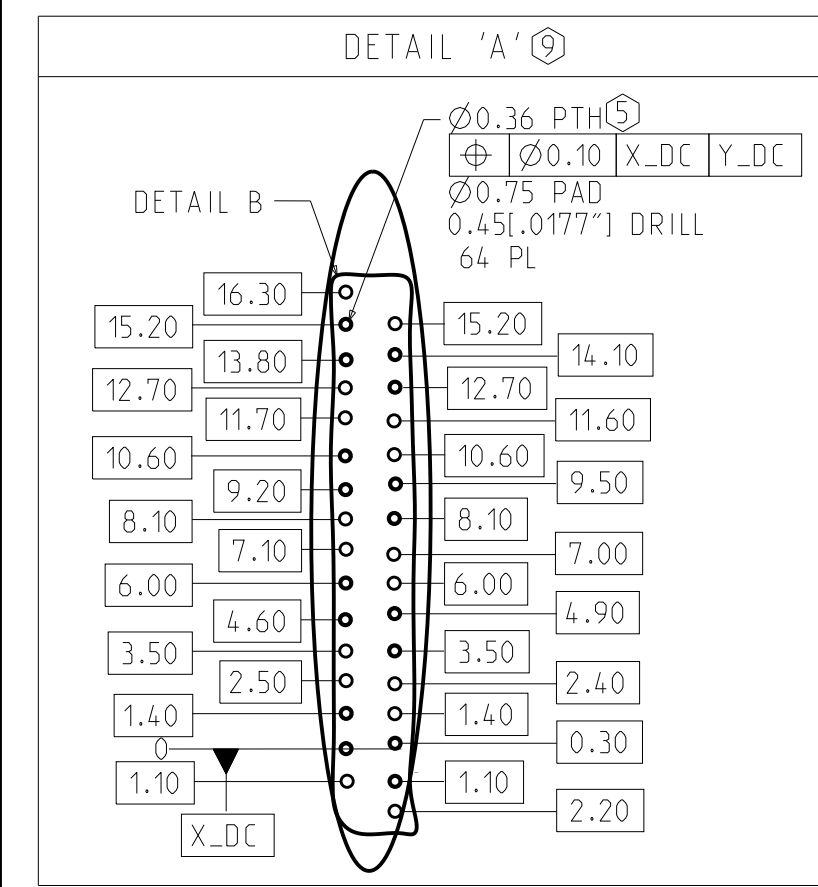
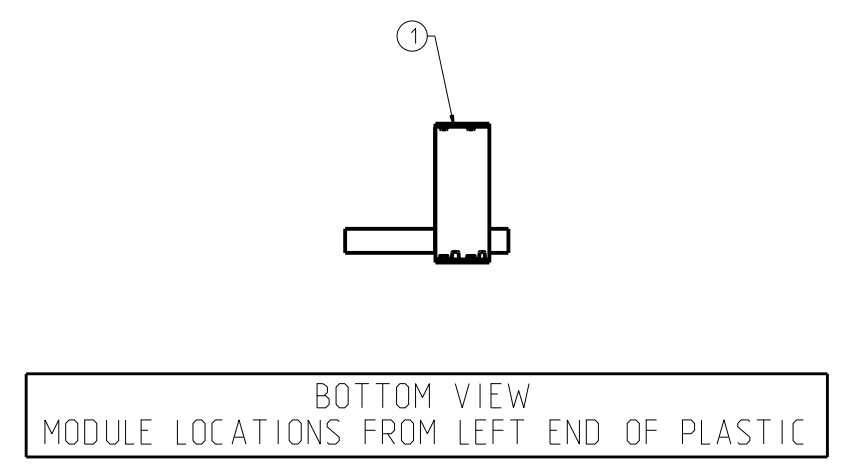
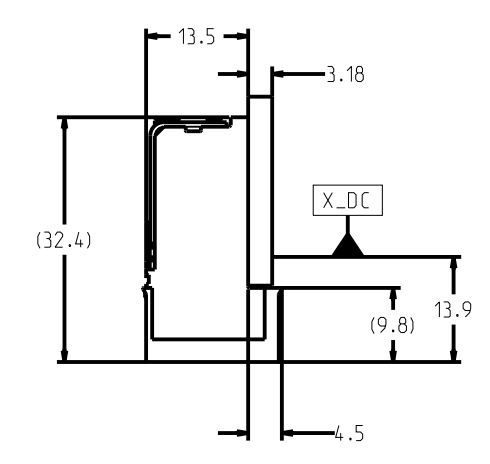
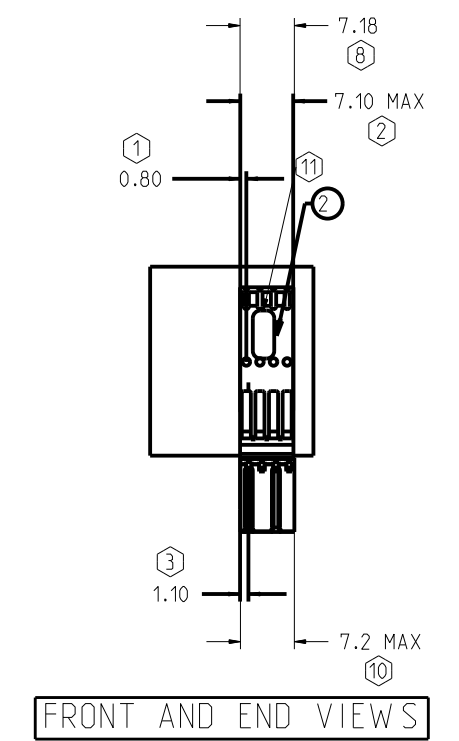


REV	ECN	DESCRIPTION	BY	DATE	APPROVED
A	JLIU-22111609	RELEASE TO PRODUCTION	J.LIU	11/23/2022	J.LIU



FRONT VIEW - DC HOLE PATTERN ONLY, CONNECTOR SIDE REFERENCED FROM LEFT MOST SIGNAL COLUMN, ALL DIMENSIONS BASIC



- NOTES:
- DISTANCE FROM FIRST STIFFENER PILOT HOLE TO LEFT END OF STIFFENER.
  - TOTAL LENGTH OF STIFFENER.
  - DISTANCE FROM CENTERLINE OF 1ST COLUMN OF SIGNAL PLATED THRU HOLES TO LEFT EDGE OF CONNECTOR.
  - MOUNTING SCREWS AND JOINER MODULES (IF PRESENT) TO BE BAGGED WITH EACH CONNECTOR ASSEMBLY.
  - STATED PAD SIZE MAY REQUIRE FILLETING. SEE TB-2237 FOR ROUTING, HOLE WALL PLATING THICKNESS AND FINISHED HOLE SIZE.
  - NA.
  - REFER TO TB-2307 FOR XCede HD PLUS PRODUCT SPECIFICATIONS.
  - OVERALL CONNECTOR LENGTH.
  - DETAIL VIEWS ARE NOT TO SCALE. DO NOT SCALE DRAWING.
  - FRONT HOUSING WIDTH. CONNECTORS CAN BE USED IN STACKABLE APPLICATION.
  - CONNECTOR IS LASER MARKED WITH MANUFACTURING INFORMATION. REFER TO DRAWING C-527-4133-000 FOR MARKING REQUIREMENTS AND DETAILS.

TABLE 1: PARTS LIST

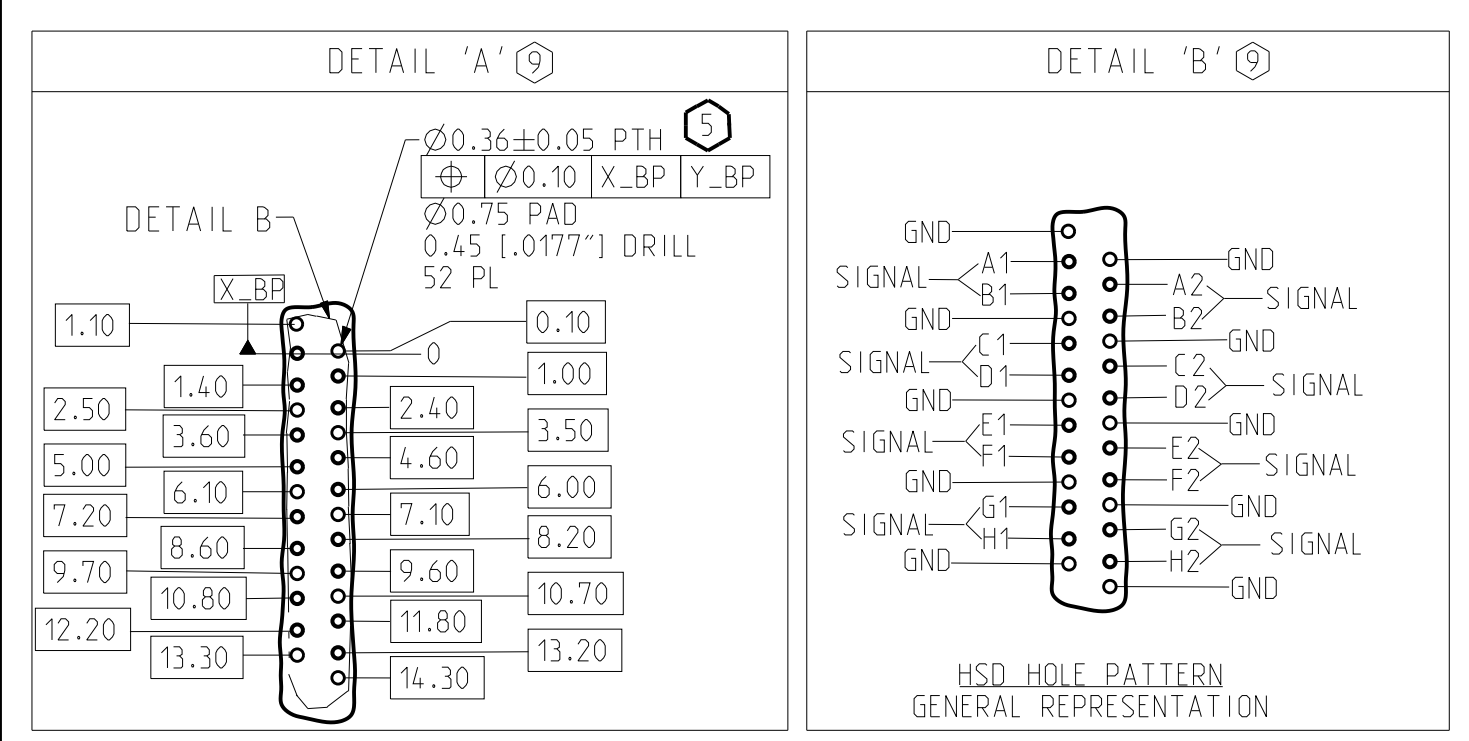
ITEM	PART NUMBER	DESCRIPTION	QTY
1	915-410B-BOH	XCede HD PLUS 4PAIR HSD MOD w/ XG, 4POS, 850HMS, .0177" DRILL, NANO NI, STD GOLD	1
2	617-1421-007	XCede HD PLUS 4PAIR STIFFENER	1

NOTE: SEE FRONT VIEW FOR STIFFENER LENGTH.

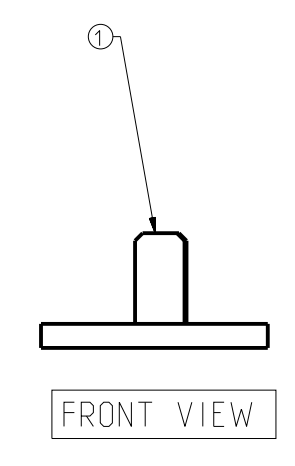
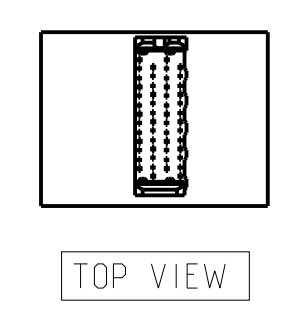
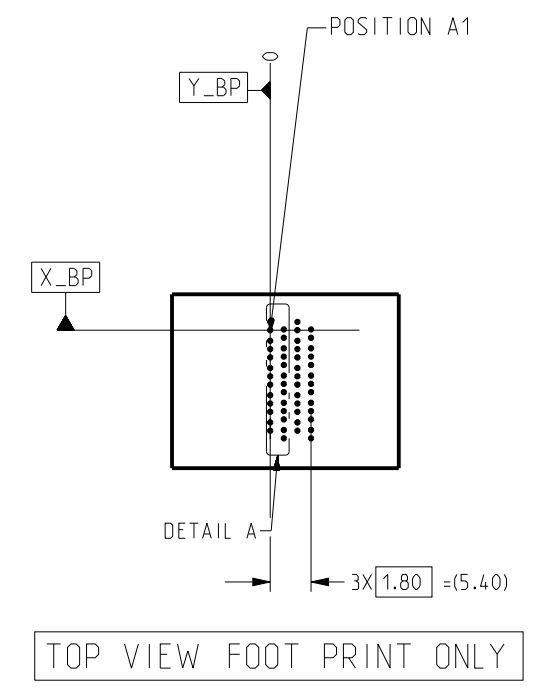
CUSTOMER: DISTRIBUTOR / XHD PLUS WITH EXTRA GROUND 4PAIR X 4, HSD 850HMS

TOLERANCES	DESIGN 10/13/2022 J.LIU	<b>Amphenol TCS</b> A Division of Amphenol Corporation 200 Innovative Way, Nashua, NH 03062 803.879.3000
0.0 ±0.25	DRAWN 10/13/2022 AUTO GENERATED	
0.00 ±0.13	CHK 10/13/2022 J.LIU	
0.000 ± -	APVD 11/23/2022 J.LIU	
ANGLES ± 3°	UNLESS OTHERWISE SPECIFIED DIMENSIONS ARE IN MM AND DECIMAL MARKER IS A PERIOD.	TITLE XCede HD PLUS DAUGHTERCARD ASSEMBLY 4 PAIR CONNECTOR, LEADFREE PART NO. JX419-50140 DRAWING NO. C-JX419-50140 CRED FILES JX419-50140.ASM JX419-50140.DRW
INTERPRET PER ANSI Y14.5 CODE IDENT 31413		CUSTOMER USE DRAWING SIZE D SCALE 1/1 SHEET 1 OF 2

REV	ECN	DESCRIPTION	BY	DATE	APPROVED
		SEE SHEET 1			



FOR REFERENCE ONLY; FOR SPECIFIC DETAILS, SEE C-USE DRAWINGS FOR BACKPLANE MODULES IN TABLE 2  
 BACKPLANE COMPONENTS MUST BE PURCHASED SEPARATELY AND MAY DIFFER FROM EXAMPLE SHOWN



ITEM	PART NUMBER	DESCRIPTION	QTY
1	926-401J-40H	XCede HD PLUS 4PAIR 4POS. OPEN. 3MM WIPE, .0177" DRILL, NANO NI, STD GOLD	1

CUSTOMER: DISTRIBUTOR / XHD PLUS WITH EXTRA GROUND 4PAIR X 4, HSD 850HMS

TOLERANCES	DESIGN	DATE	DESIGNER
0.0	±0.25	10/13/2022	J.LIU
0.00	±0.13	10/13/2022	AUTO GENERATED
0.000	± -	10/13/2022	CHK J.LIU
ANGLES	± 3°	11/23/2022	APVD J.LIU

**Amphenol TCS**  
 A Division of Amphenol Corporation  
 200 Innovative Way, Nashua, NH 03062 803.879.3000

TITLE: XCede HD PLUS BACKPLANE ASSEMBLY  
 4 PAIR CONNECTOR, LEADFREE

PART NO. JX419-50140  
 DRAWING NO. C-JX419-50140

UNLESS OTHERWISE SPECIFIED DIMENSIONS ARE IN MM AND DECIMAL MARKER IS A PERIOD.

REV A

INTERPRET PER ANSI Y14.5  
 CODE IDENT 31413

CUSTOMER USE  
 DRAWING