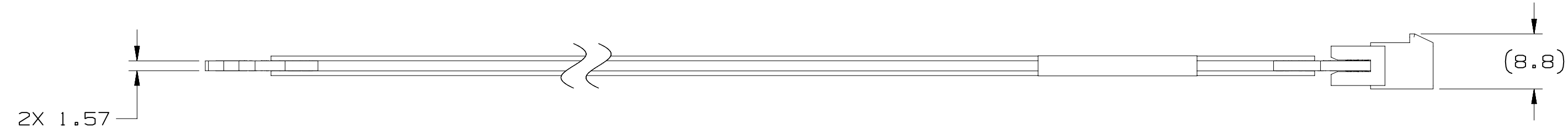
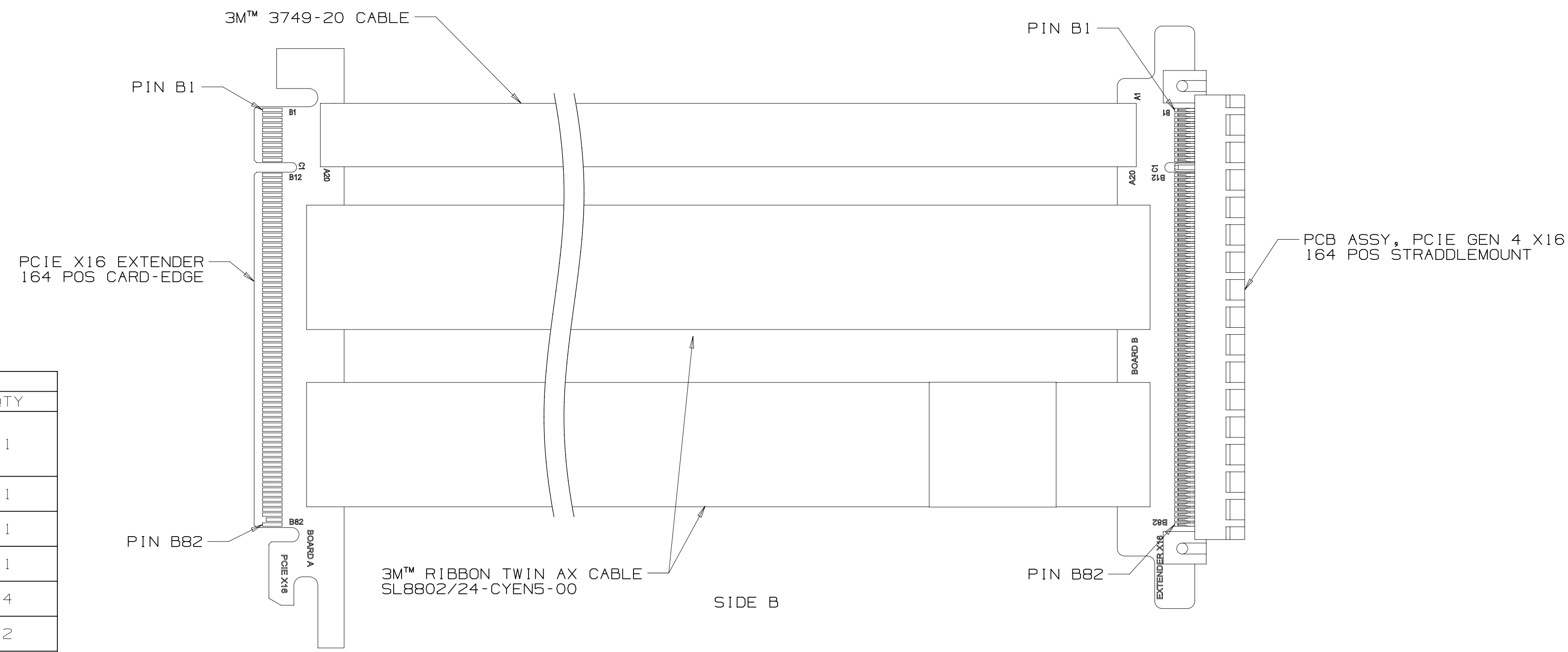


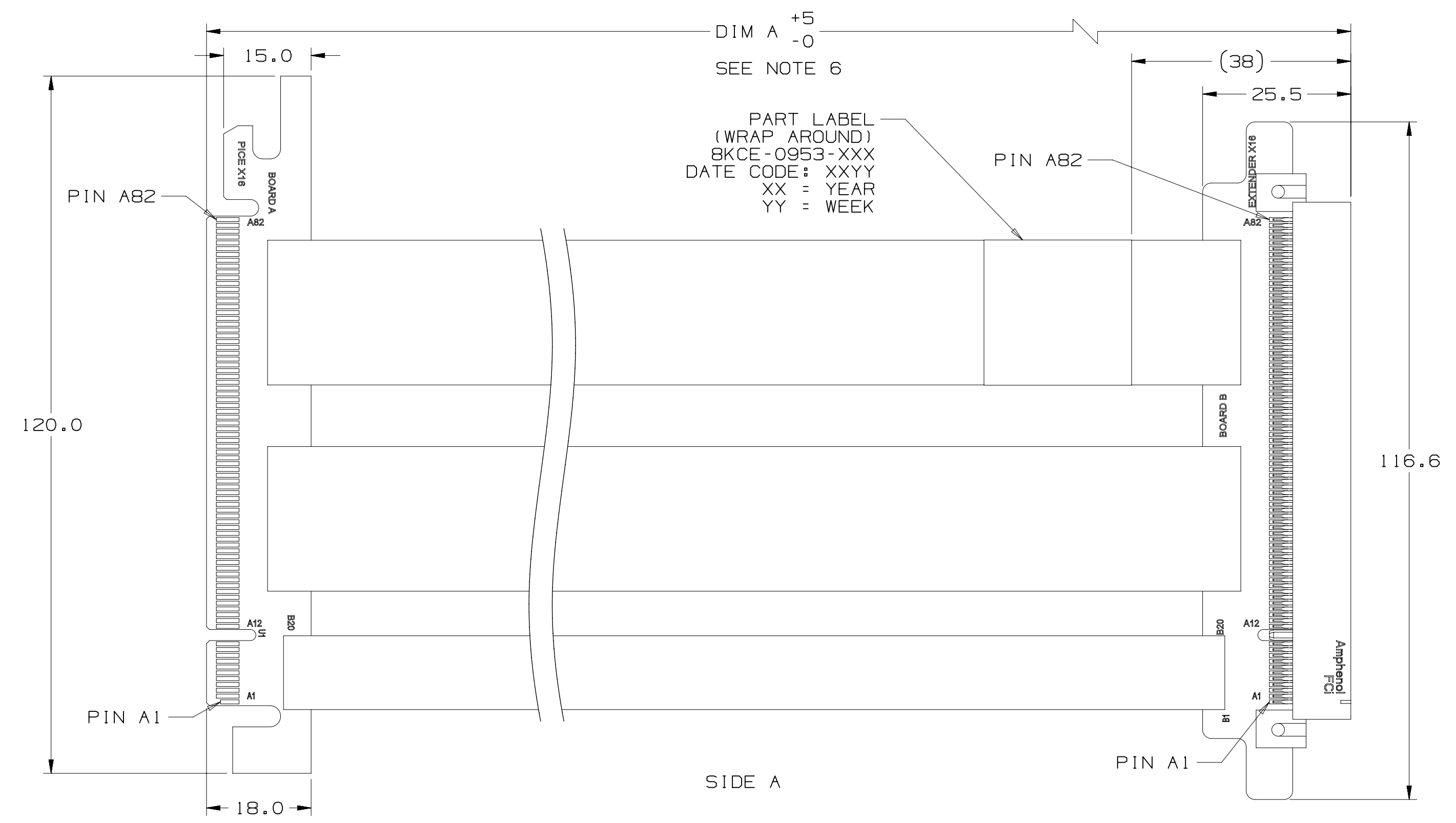
# 3M™ PCIe GEN 4 X16 EXTENDER TWIN AXIAL CABLE ASSEMBLY

- NOTES
- DIMENSIONS ARE IN MILLIMETERS.
  - 3M™ RIBBON TWINAX DESCRIPTION: 30 AWG, SILVER PLATED SIGNAL WIRE
  - ROHS COMPLIANT. SEE REGULATORY INFORMATION APPENDIX IN "ROHS COMPLIANCE" SECTION AT WWW.3MCONNECTORS.COM (E1 & C1 APPLY)
  - THIS CABLE CONSTRUCTION HAS A THIN ALUMINUM INNER LAYER EXPOSED AT EACH EDGE. USERS SHOULD ASSESS WHETHER THE EXPOSED EDGE PRESENTS A SHORTING RISK IN THEIR SPECIFIC APPLICATION. INSULATING TAPE MAY BE APPLIED AT THE CABLE ASSEMBLY LEVEL, AS NEEDED, TO COVER THE EXPOSED EDGE IN RISK AREAS.
  - APPLICABLE SPECIFICATIONS: PRODUCT SPECIFICATION NUMBERS: TWIN AX CABLE: PS-0283
  - ORDER BY APPLICABLE 3M PART NUMBER: 8KCE-0953-XXXX  
XXXX = DIM 'A' IN MILLIMETERS (1000 = 1 METER)  
150 MM MINIMUM LENGTH.
  - FLAMMABILITY RATING: TWIN AX CABLE: UL94 HB  
PCBS: UL94V-0
  - PADDCARD FINGER GOLD THICKNESS: 0.76 μm [ 30 μ" ] MIN ELECTROLYTIC HARD GOLD OVER 1.27 μm [ 50 μ" ] MIN ELECTROLYTIC NICKEL.



BILL OF MATERIALS			
ITEM	DESCRIPTION	QTY	
1.0	PBA PCB ASSY, PCIe GEN 4 X16 (164 POS) STRADDLEMOUNT 3M P/N: 78-9102-7903-9 3M DWG NO: 78-9102-7904-7	1	
1.1	PCB PCIe GEN 4 X16 (164 POS) STRADDLEMOUNT 3M P/N: 78-9102-6763-8	1	
1.2	CONN CONNECTOR, PCIe X16 164 POSITION, FEMALE SOCKET GEN5 STRADDLEMOUNT	1	
2.0	PCB PCIe X16 EXTENDER (164 POS) CARD-EDGE 3M P/N: 78-9102-6557-4	1	
3.0	CABLE RIBBON TWIN AX CABLE 3M P/N: SL8802/24-CYEN5-00	4	
4.0	CABLE RIBBON CABLE, 20 POSITION 3M P/N: 3749-20	2	
5.0	STRAIN RELIEF ADHESIVE	AS REQUIRED	

3M PART NUMBER: 8KCE-0953-XXXX  
LENGTH IN MILLIMETERS



DESIGN REFERENCE	NEXT ASSEMBLY	REV	ECO	ISSUE DATE AND DESCRIPTION	DRFT	CHKD
		B	0102671	FEB 14, 2022 ITEM 1.2 REMOVED P/Ns	LDS	MML
		A	0100323	OCT 07, 2021 WORK REQUEST 13075 INITIAL RELEASE	LDS	MML
DESIGNER: L SCHMIDT DATE: MAR 28, 2021 MFG DATE: JUN 18, 2021		APPROVAL: M LETTANG				
<div style="display: flex; align-items: center;"> <p>© 3M COMPANY 2022 This document and the information it contains are 3M property and may not be reproduced or further distributed without 3M permission, or used or disclosed other than for 3M authorized purposes. All rights reserved.</p> </div>						
DO NOT SCALE DRAWING SCALE: 1/1 TOLERANCES EXCEPT AS NOTED: INCHES: .00 ±, .000 ±, .0000 ±; MILLIMETERS: 0 ±1, .0 ±.5, .00 ±.05, .000 ±.005; ANGLES: ±1°		TITLE: 8KCE-0953-XXXX, CABLE ASSY, PCIe X16 BY PCIe X16 EXTENDER CAGE NUMBER: D78-5100-2721-8 MODEL: 1S1S YES NO SHT 1 OF 3				

3M ELECTRONICS MATERIALS SOLUTIONS DIVISION  
INTERCONNECT SOLUTIONS  
<http://www.3m.com/TwinAx>  
3M IS A TRADEMARK OF 3M COMPANY.  
FOR TECHNICAL, SALES OR ORDERING INFORMATION CALL 800-225-5373

78-5100-2721-8  
DRAWING NUMBER  
78-5100-2721-8  
REV. 1  
DATE 2/14/2022  
-- UTC  
Drf-set (hrs) 6



3M™ PCIe GEN 4 X16 EXTENDER TWIN AXIAL CABLE ASSEMBLY

Regulatory: For regulatory information about this product, visit [3M.com/regs](http://3M.com/regs) or contact your 3M representative.

Technical Information: The technical information, recommendations and other statements contained in this document are based upon tests or experience that 3M believes are reliable, but the accuracy or completeness of such information is not guaranteed.

Product Use: Many factors beyond 3M's control and uniquely within user's control can affect the use and performance of a 3M product in a particular application. Given the variety of factors that can affect the use and performance of a 3M product, user is solely responsible for evaluating the 3M product and determining whether it is fit for a particular purpose and suitable for user's method of application.


Warranty, Limited Remedy, and Disclaimer: Unless an additional warranty is specifically stated on the applicable 3M product packaging or product literature, 3M warrants that each 3M product meets the applicable 3M product specification at the time 3M ships the product. 3M MAKES NO OTHER WARRANTIES OR CONDITIONS, EXPRESS OR IMPLIED, INCLUDING, BUT NOT LIMITED TO, ANY IMPLIED WARRANTY OR CONDITION OF MERCHANTABILITY OR FITNESS FOR A PARTICULAR PURPOSE OR ANY IMPLIED WARRANTY OR CONDITION ARISING OUT OF A COURSE OF DEALING, CUSTOM OR USAGE OR TRADE. If the 3M product does not conform to this warranty, then the sole and exclusive remedy is, at 3M's option, replacement of the 3M product or refund of the purchase price.

Limitation of Liability: Except where prohibited by law, 3M will not be liable for any loss or damage arising from the 3M product, whether direct, indirect, special, incidental or consequential, regardless of the legal theory asserted, including warranty, contract, negligence or strict liability.

3M Company  
 Electronics Materials Solutions Division  
 13011 McCallen Pass, Bldg. C  
 Austin, TX 78753-5380  
 1-800-225-5373  
[www.3m.com/TwinAx](http://www.3m.com/TwinAx)

3M ELECTRONICS MATERIALS SOLUTIONS DIVISION  
 INTERCONNECT SOLUTIONS  
<http://www.3m.com/TwinAx>

3M IS A TRADEMARK OF 3M COMPANY.  
 FOR TECHNICAL, SALES OR ORDERING  
 INFORMATION CALL 800-225-5373

DESIGN REFERENCE	NEXT ASSEMBLY	REV	ECO	ISSUE DATE AND DESCRIPTION	DRFT	CHKD
		B		FEB 14, 2022 ITEM 1.2 REMOVED P/Ns	LDS	MML
		A		OCT 07, 2021 WORK REQUEST 13075 INITIAL RELEASE	LDS	MML
DATE	DATE	DATE	DATE	DATE	DATE	DATE
DRP L SCHMIDT	DATE MAR 29, 2021	MFG				
CHKD M LETTANG	DATE JUN 18, 2021	APPL				
DIVISION	DIVISION CODE	 © 3M COPYRIGHT 2022 This document and the information it contains are 3M property and may not be reproduced or further distributed without 3M permission, or used or disclosed other than for 3M authorized purposes. All rights reserved.				
DO NOT SCALE DRAWING	SCALE 1/1	TOLERANCES EXCEPT AS NOTED		INCHES .00 ± .000 ± .0000 ±		
THIRD ANGLE PROJECTION	INTERPRET PER ASME Y14.5 - 2018	MILLIMETERS		0 ± 1 .0 ± .5 .00 ± .05 .000 ± .005		
MAX SURFACE ROUGHNESS 125	<input type="checkbox"/> ALL SURFACES	<input checked="" type="checkbox"/> MARKED ONLY	ANGLES ± 1°	CAGE NUMBER	SIZE	DRAWING NO.
				D	78-5100-2721-8	B
				MODEL	DET	SHT 3 OF 3

78-5100-2721-8 DRAWING NUMBER  
 6  
 Drt.set (hrs)  
 6  
 UTC  
 2/14/2022  
 Time  
 Standard  
 Central  
 Imaged: