



## Corcom HQ Series 20A Power Line Filters

The HQ Series filters are designed to provide the highest available attenuation of RFI noise in the frequency ranges from 10kHz to 30MHz for low leakage current applications. The new 20A versions come in a chassis mount style and offer spade or threaded bolt termination options.

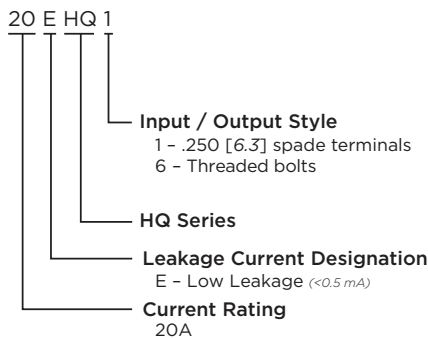
### KEY FEATURES

- Size and cost effective design
- Two stage electrical setup provides highest available attenuation of RFI noise in the frequency range from 10kHz to 30MHz
- Compliant with internal spacing requirements for UL60601-1, 3<sup>rd</sup> edition for medical applications
- Designed for easy connection and installation
- Optimized for attenuation and size

### APPLICATIONS

- Dialysis machines
- Diagnostic equipment
- Medical laser
- CAT scanners
- MRT scanners
- Dentist equipment
- Operating room equipment
- Physical therapy equipment

### ORDERING INFORMATION



### STANDARDS AND SPECIFICATIONS

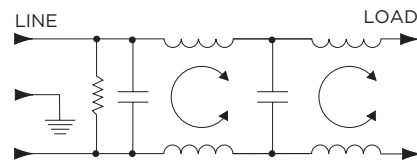
- UL Recognized
- VDE Approved
- CSA Pending



### ELECTRICAL SPECIFICATIONS

|                            |                 |          |
|----------------------------|-----------------|----------|
| Hipot rating (one minute): | Line to Ground: | 1500 VAC |
|                            | Line to Line:   | 1450 VDC |
| Rated Voltage:             |                 | 250 VAC  |
| Operating Frequency:       |                 | 50/60 Hz |
| Rated Current:             |                 | 20A max. |

### ELECTRICAL SCHEMATIC



### PRODUCT OFFERING

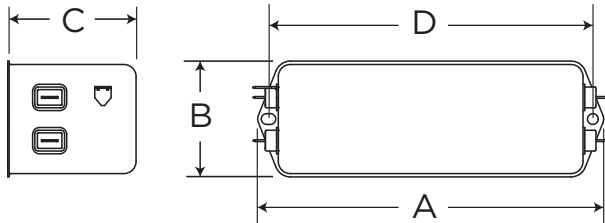
- 4-1609037-2:** 20EHQ1 20A HQ Series filter with spade terminals  
**4-1609037-1:** 20EHQ6 20A HQ Series filter with threaded bolt terminals

Samples Available

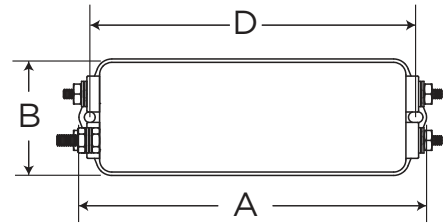


CASE STYLES

20EHQ1



20EHQ6



DIMENSIONS

| Part Numbers  | A<br>(max)   | B<br>(max)  | C<br>(max)  | D<br>± .015<br>± .38 |
|---------------|--------------|-------------|-------------|----------------------|
| <b>20EHQ1</b> | 6.03         | 2.07        | 2.28        | 5.63                 |
|               | <i>153.2</i> | <i>52.6</i> | <i>57.9</i> | <i>142.9</i>         |
| <b>20EHQ6</b> | 6.03         | 2.07        | 2.28        | 5.63                 |
|               | <i>153.2</i> | <i>52.6</i> | <i>57.9</i> | <i>142.9</i>         |

PERFORMANCE DATA

Minimum Insertion Loss - Measured in closed 50 Ohm system

Common Mode / Asymmetrical (Line to Ground)

| Current Rating | Frequency — MHz |     |     |     |    |    |    |    |    |
|----------------|-----------------|-----|-----|-----|----|----|----|----|----|
|                | .01             | .02 | .05 | .15 | .5 | 1  | 5  | 10 | 30 |
| 20A            | 6               | 12  | 20  | 30  | 34 | 34 | 25 | 20 | 15 |

Differential Mode / Symmetrical (Line to Line)

| Current Rating | Frequency — MHz |     |     |     |    |    |    |    |    |
|----------------|-----------------|-----|-----|-----|----|----|----|----|----|
|                | .01             | .02 | .05 | .15 | .5 | 1  | 5  | 10 | 30 |
| 20A            | 15              | 20  | 20  | 46  | 65 | 70 | 65 | 60 | 60 |

Dimensions in inches and millimeters unless otherwise shown. Values in italics are metric equivalents. Dimensions are shown for reference purposes only. Specifications subject to change. Customer drawing should be used for all design activity.

