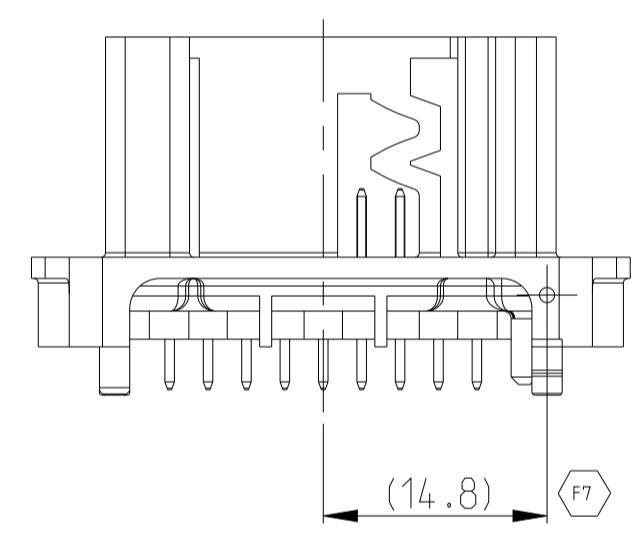
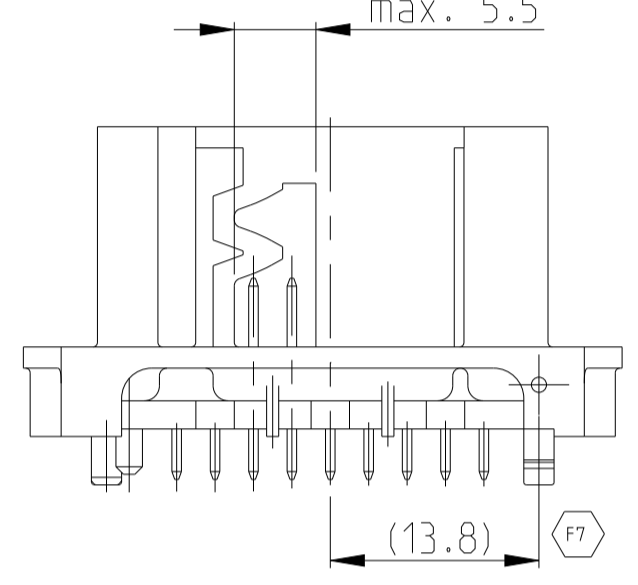
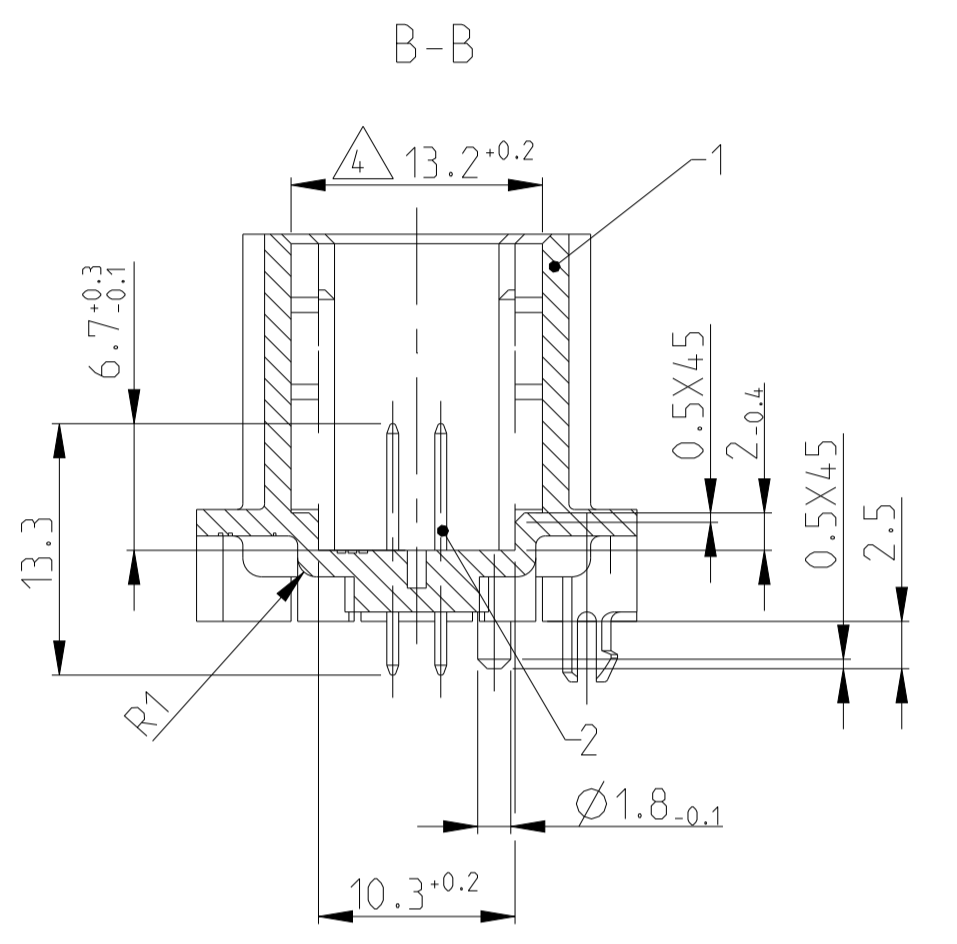
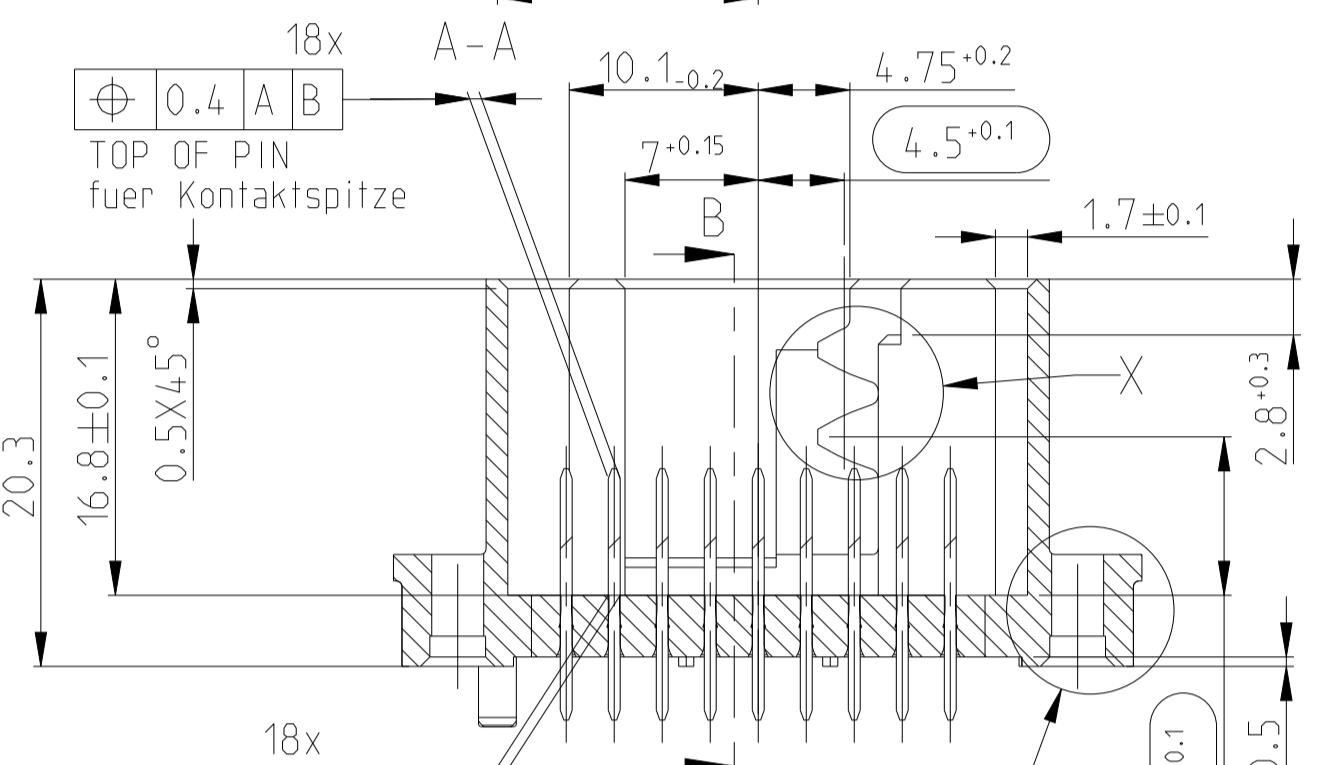
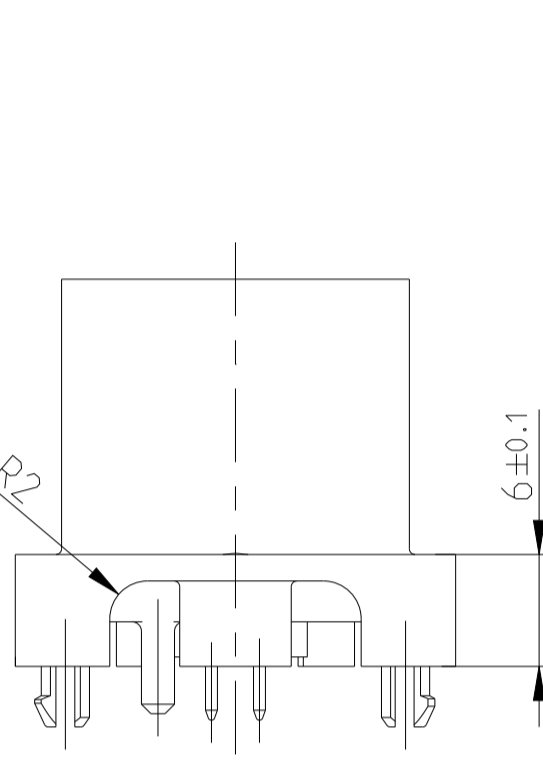
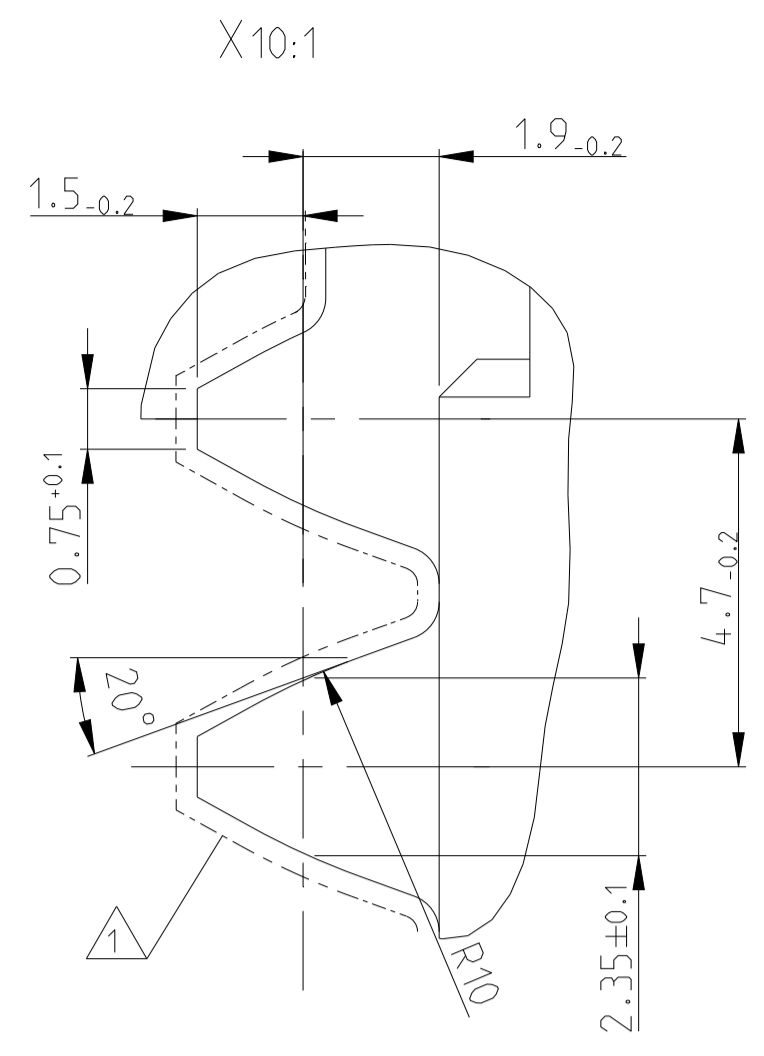
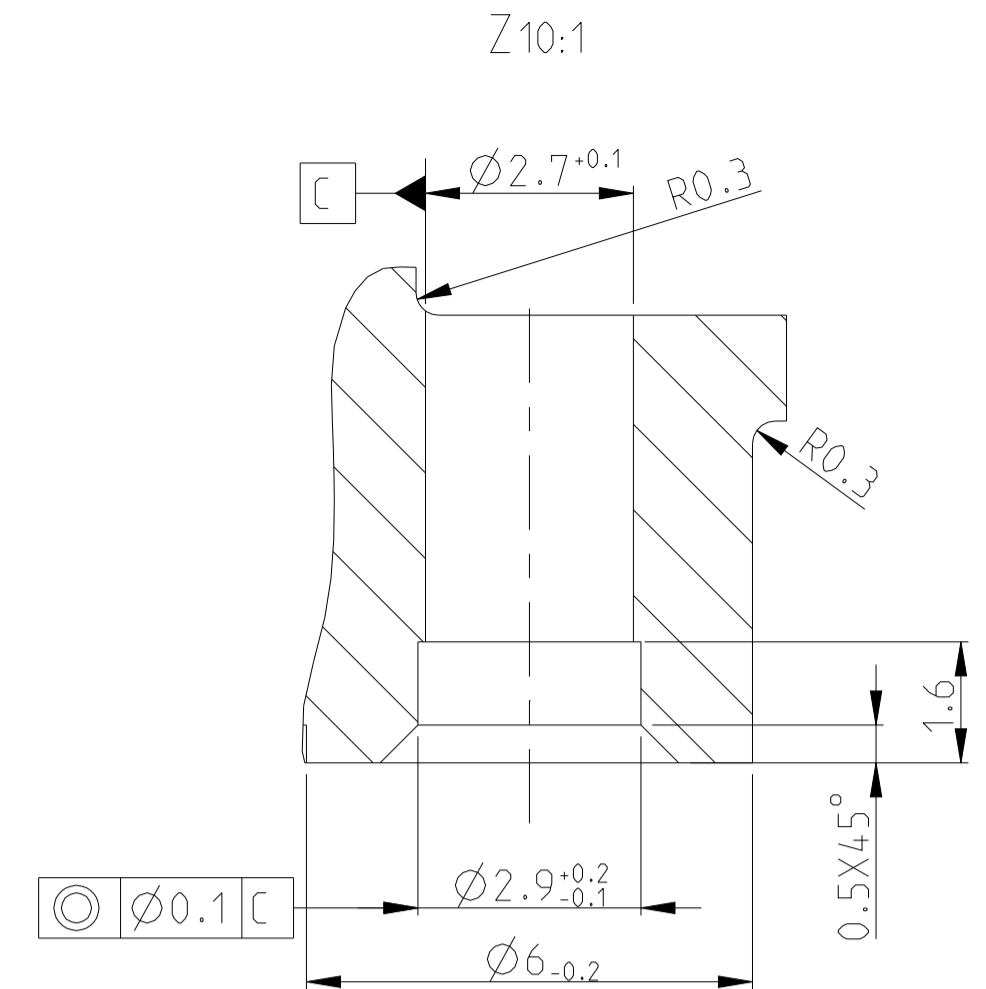
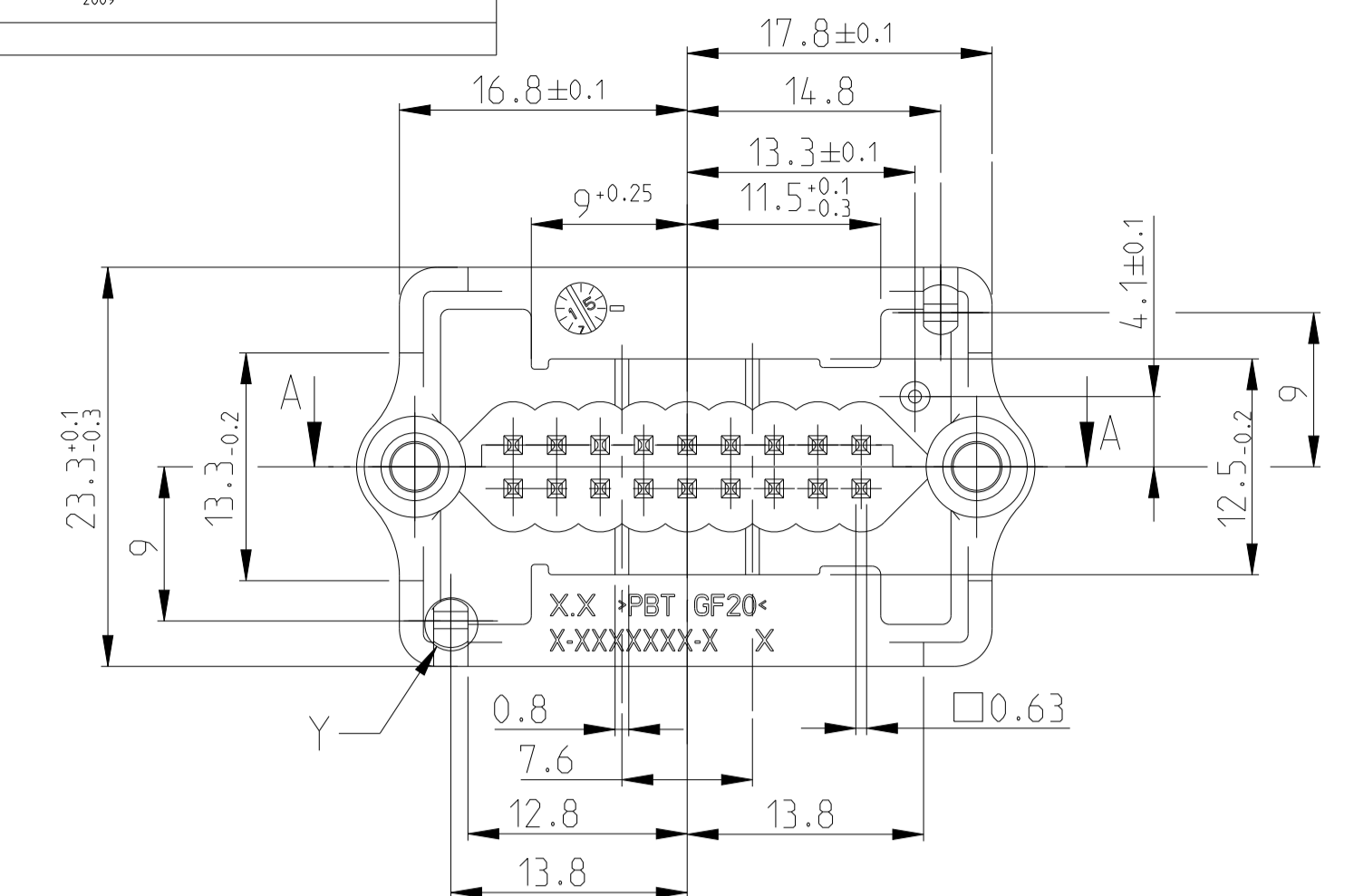
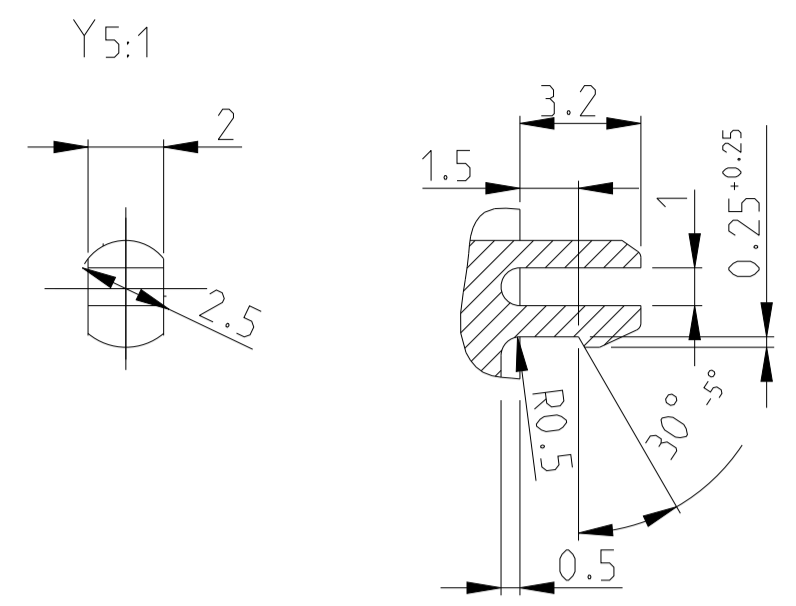
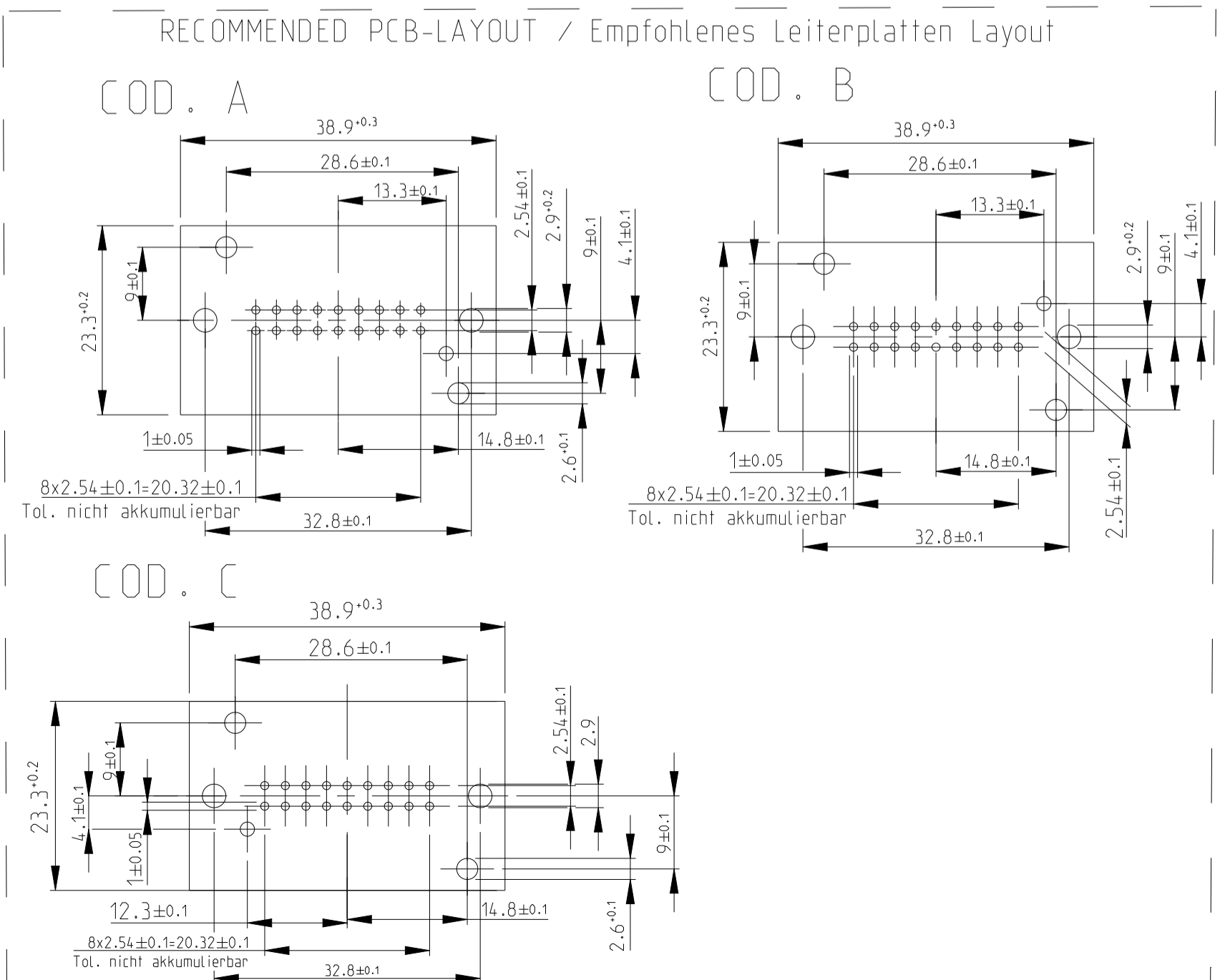
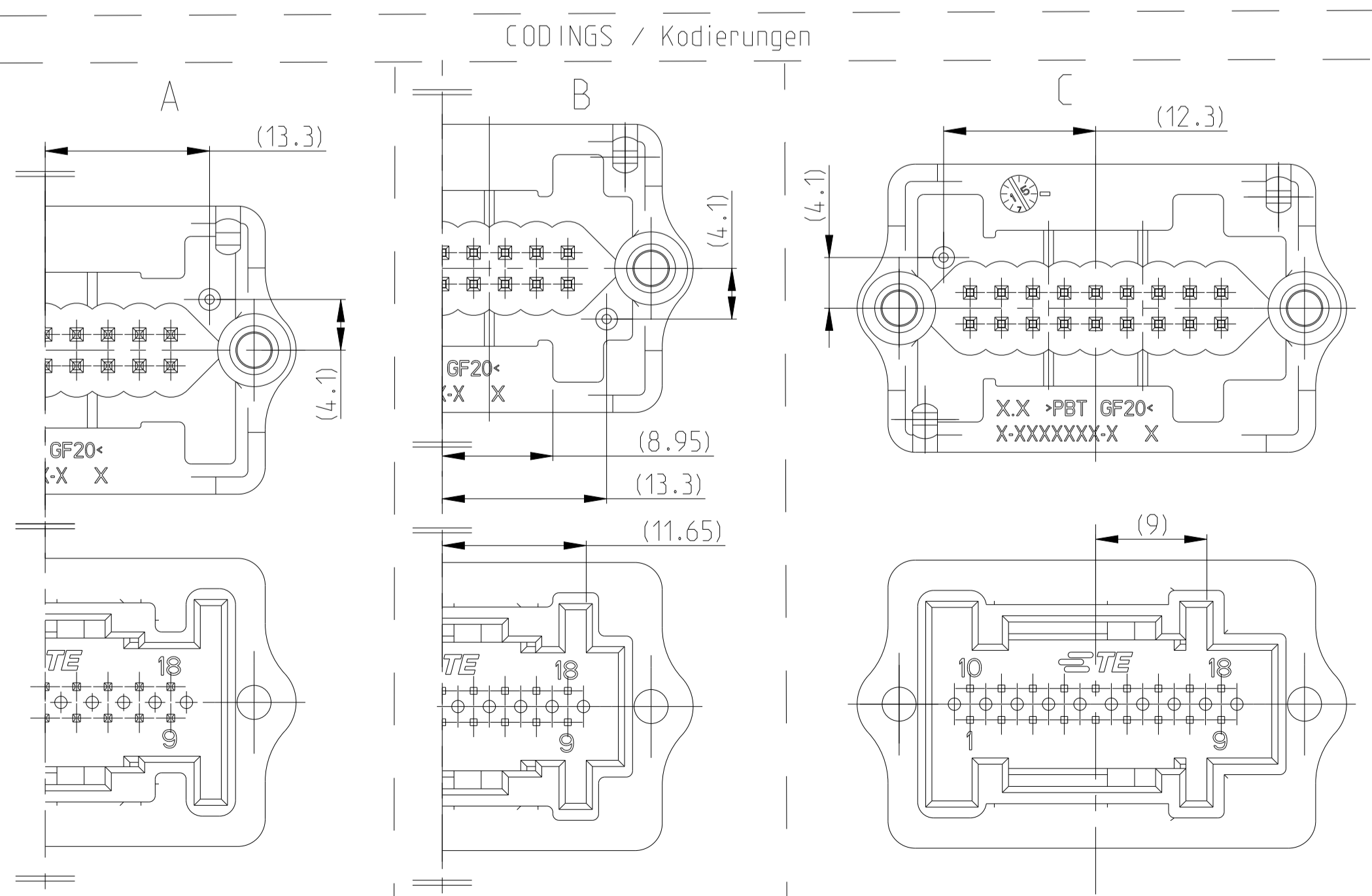


PROJECT NO. 95-52303, EGATN09209

| REVISIONS | | | | |
|-----------|-----------|----|-----|------|
| REV. | DATE | BY | CHK | APPV |
| F5 | 20FEB2014 | RM | | SR |
| F6 | 29MAR2016 | DK | | SR |
| F7 | 31MAY2021 | KG | | KK |



- NOTES / Bemerkungen
- IN THIS AREA NO BURRS PERMITTED
In diesem Bereich kein Grat zulaessig
 - NOT SPECIFIED RADII R0.5
Nicht bemaste Radien R0.5
 - NOT SPECIFIED WALL THICKNESS 1.4±0.1
Nicht bemaste Wandstaerken 1.4±0.1
 - Warpage -0.2mm zul.
Verzug -0.2mm zul.
 - MATED TE / DC INTERFACE 114-18063-023
Entspricht TE / DC Schnittstelle 114-18063-023
 - MOUNTING AREA SILVER PLATED / SOLDER AREA TIN PLATED
Steckbereich ist versilbert / Loetbereich ist verzinkt
 - ONLY THE GERMAN LANGUAGE VERSION SHALL BE BINDING
Massgebend ist der deutsche Text
 - DESIGN DETAILS SERVING TECHNICAL PROCESS ARE LEFT TO MANUFACTURER
Einzelheiten der Ausfuehrung, die dem techn. Fortschritt dienen, bleiben dem Hersteller ueberlassen



| COD. | TE ORDER NO. | REV. | PCS. | DESCRIPTION | MATERIAL | SURFACE COLOUR | POS. |
|--|--------------|------|------|--------------------|---------------------------|-----------------------------------|------|
| C | 3-967618-2 | A | 18 | 0.63mm PIN | COPPER ALLOY Cu-Legierung | SILVER PLATED versilbert | 2 |
| | | | 1 | PIN HEADER, 18POS. | PBT GF20 | BLUE/blau SIMILAR/aehtl. RAL 5012 | 1 |
| C | 3-967618-1 | A | 18 | 0.63mm PIN | COPPER ALLOY Cu-Legierung | TIN verzinkt | 2 |
| | | | 1 | PIN HEADER, 18POS. | PBT GF20 | BLUE/blau SIMILAR/aehtl. RAL 5012 | 1 |
| B | 0-967618-4 | B | 18 | 0.63mm PIN | COPPER ALLOY Cu-Legierung | SILVER PLATED versilbert | 2 |
| | | | 1 | PIN HEADER, 18POS. | PBT GF20 | Natur | 1 |
| A | 0-967618-3 | B | 18 | 0.63mm PIN | COPPER ALLOY Cu-Legierung | SILVER PLATED versilbert | 2 |
| | | | 1 | PIN HEADER, 18POS. | PBT GF20 | BLACK/schwarz | 1 |
| B | 0-967618-2 | F | 18 | 0.63mm PIN | COPPER ALLOY Cu-Legierung | TIN verzinkt | 2 |
| | | | 1 | PIN HEADER, 18POS. | PBT GF20 | Natur | 1 |
| A | 0-967618-1 | F | 18 | 0.63mm PIN | COPPER ALLOY Cu-Legierung | TIN verzinkt | 2 |
| | | | 1 | PIN HEADER, 18POS. | PBT GF20 | BLACK/schwarz RAL 9011 | 1 |
| COD. TE ORDER NO. REV. PCS. DESCRIPTION MATERIAL SURFACE COLOUR POS. | | | | | | | |

THIS DRAWING IS A CONTROLLED DOCUMENT. DWN E. Durr 25.01.96
 CHK J. Haas 06.03.06

STE TE Connectivity

NAME: MQS PIN HEADER 18POS.
 MQS Stiftgehäuse, 18pos.

SIZE: A1 CAGE CODE: 00779 DRAWING NO: C=967618
 RESTRICTED TO

MATERIAL: - FINISH: - WEIGHT: - CUSTOMER DRAWING / KUNDENZEICHNUNG SCALE: 2:1 SHEET 1 OF 1 REV: F7