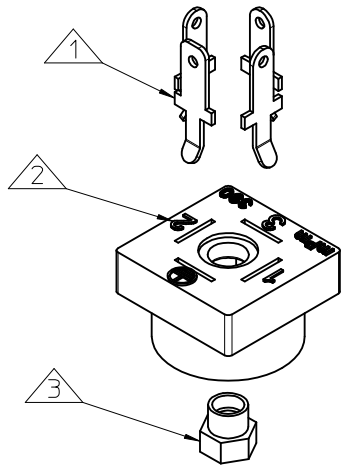
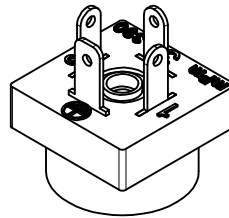


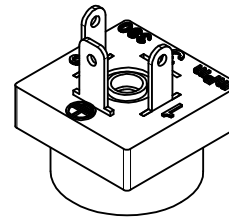
10 9 8 7 6 5 4 3 2 1



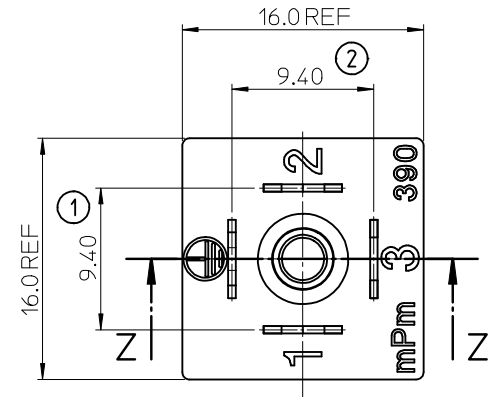
ITEM	DESCRIPTION
1	TERMINALS
2	BASE HOUSING
3	CENTRE SCREW INSERT



3P+T VERSION

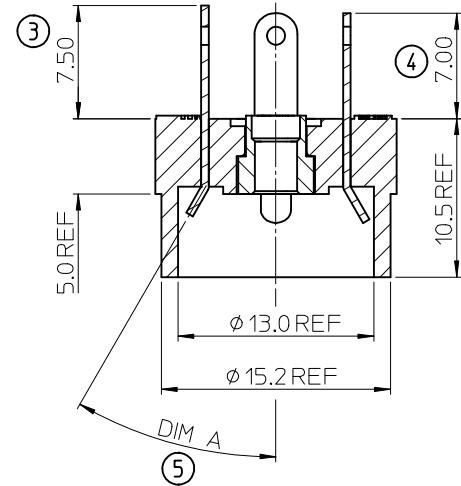


2P+T VERSION



B393000N0

SERIES \_\_\_\_\_  
 B39= FORM C MICRO  
 POLES \_\_\_\_\_  
 2= 2 POLE & 3= 3 POLE  
 CURVED BASE DIAMETER \_\_\_\_\_  
 000= FLAT BASE  
 MATERIAL AND HOUSING COLOUR \_\_\_\_\_  
 N= PA BLACK  
 SCREW AND GASKET \_\_\_\_\_  
 0= NO GASKET, NO SCREW



Z-Z

PART NUMBER	mPm NUMBER	DESCRIPTION	DIM A TERMINAL BEND ANGLE
1210120126	B392000N0	TYPE C MICRO 2P+T BLACK	45°±3°
1210120127	B393000N0	TYPE C MICRO 3P+T BLACK	45°±3°

NOTES

- PLEASE SEE TABLE FOR CURRENTLY CONFIGURED PART NUMBERS. FOR SPECIFIC PART NUMBERS PLEASE CONTACT SALES OR CONSULT THE INTELLIGENT PART NUMBERS IN THE TABLE ATTACHED.
- FOR PACKAGING SEE PACKAGING SPEC PK-121013-B39
- PRODUCT SPEC: SEE PS-121201-001
- TERMINALS BENT AFTER INSERTION, FOR BEND ANGLE SEE TABLE

LAST INSPECTION NUMBER: 5

ORIGINAL RELEASE EC NO: IPG2013-1282 DRW:DSHEA 2013/02/19 CHKD:SMCGREEVY 2013/02/20 APPR:STGRIFFIN 2013/02/28	QUALITY SYMBOLS	GENERAL TOLERANCES (UNLESS SPECIFIED)	DIMENSION STYLE	SCALE	DESIGN UNITS	THIRD ANGLE PROJECTION	
	▽=0 ∇=0	mm INCH	MM ONLY	3:1	METRIC		
		4 PLACES ± --- ± --- 3 PLACES ± --- ± --- 2 PLACES ± 0.10 ± --- 1 PLACE ± 0.20 ± --- 0 PLACE ± --- ± ---	DRAWN BY DATE DSHEA 2013/02/19	TITLE	B39 SERIES BASE		
		ANGULAR ± 2 °	CHECKED BY DATE SMCGREEVY 2013/02/20				
	DRAFT WHERE APPLICABLE MUST REMAIN WITHIN DIMENSIONS	APPROVED BY DATE STGRIFFIN 2013/02/28	MATERIAL NO.				
A	REV	SIZE	THIS DRAWING CONTAINS INFORMATION THAT IS PROPRIETARY TO MOLEX INCORPORATED AND SHOULD NOT BE USED WITHOUT WRITTEN PERMISSION				
		A3	SEE TABLE SD-121012-126 1 OF 1				

9 8 7 6 5 4 3 2 1