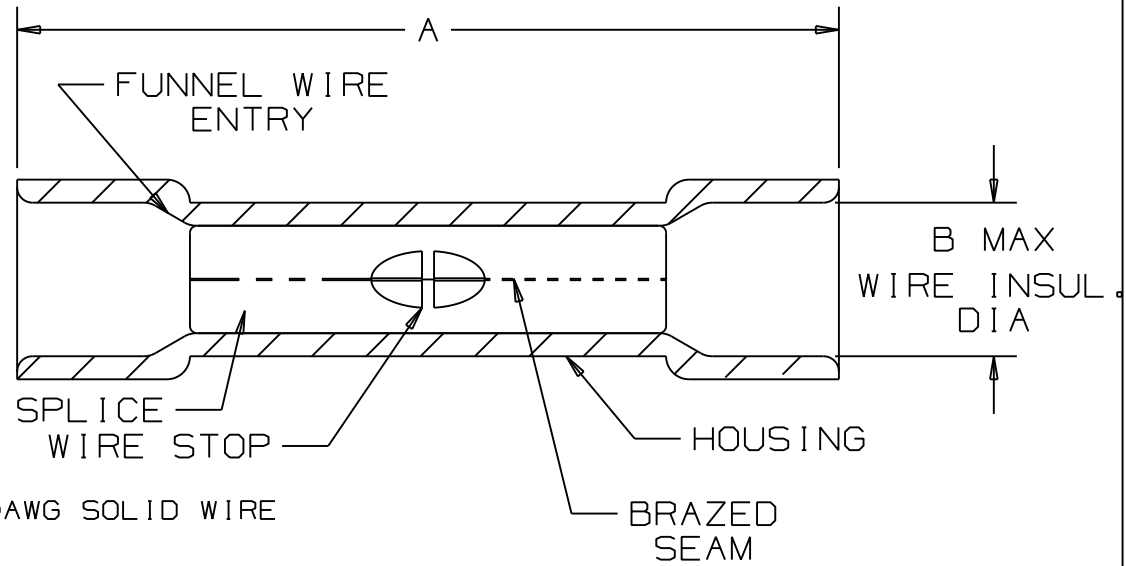


THIS COPY IS PROVIDED ON A RESTRICTED BASIS AND IS NOT TO BE USED IN ANY WAY DETRIMENTAL TO THE INTERESTS OF PANDUIT CORP.

PANDUIT PART NUMBER		WIRE RANGE	COLOR CODE	DIMENSIONS in.	
PREFIX	PK.			A ±.03	B
BSV18X	-C	22-18	RED	1.03	.170
	-M			(26,16)	(4,32)
	-MY			*	
BSV14X	-C	16-14	BLUE	1.04	.200
	-M			(26,42)	(5,08)
BSV10X	-L	12-10	YELLOW	1.18	.250
	-D			(29,97)	(6,35)



NOTES :

- UL LISTED AND CSA CERTIFIED FOR :
  - 600 V MAX. VOLTAGE RATING
  - 221°F (105°C) MAX. TEMP. RATING
  - SOLID OR STRANDED, COPPER WIRE
  - BSV10X 300V MAX VOLTAGE RATING WITH 10AWG SOLID WIRE
- MATERIAL :
  - STAMPING (22-18 & 16-14) - .03" THK COPPER, TIN PLATED
  - STAMPING (12-10) - .04" THK COPPER, TIN PLATED
  - HOUSING - VINYL
- DIMENSIONS IN BRACKETS ARE IN MILLIMETERS
- INSTALLATION TOOLS : CT-100, CT-500, CT-550, CT-1550, CT-1551 (CT-500 NOT USED WITH BSV10X, 300V WITH BSV10X & CT-100)
- \* 22-16 AWG WIRE RANGE WITH CT-500, CT-550, CT-1550, CT-1551 TOOLS
  - \*\* 18-14 AWG WIRE RANGE WITH CT-500, CT-550, CT-1550, CT-1551 TOOLS
  - \*\*\* 12-10 AWG STRANDED AND 12 AWG SOLID COPPER WIRE WITH CT-1550 AND CT-1551 TOOL
- WIRE STRIP LENGTH: 5/16 +1/32<sub>0</sub> (7,9 +.8<sub>0</sub>)
- PACKAGE QTY: STD. PKG. -L=50 BULK PKG. -D=500  
 -C=100 -M=1000 -MY=1000



LISTED  
587H  
E52164

CERTIFIED  
LR31212

REV	DATE	BY	CHK	DESCRIPTION	ECN #	CUST	PM
08	08/10	SRB		Added note 1. D. BSV10X 300 max voltage rating			
07	5/05	JHNU		ADDED PACKAGING CODE "MY" TO DRAWING.	08760	JAC	CCH
06	10/00	EJS	SKB	DIMENSION B IN PART BSV18X WAS .183, BSV14X WAS .211, BSV10X WAS .260	07265	JCJ	TRO

**PANDUIT** CORP.

TINLEY PARK, ILLINOIS

EXPANDED VINYL INSULATED BUTT SPLICES

DRAWN BY FES	CHK'D	SCALE NONE	DRAWING NO. A41181
-----------------	-------	---------------	-----------------------