

Table with 4 columns: PART NUMBER, REV, FIRST USED, T-UNIT. Rows include 1852889-1 B 122500-1 T-UNIT, 1852889-2 B 680017-4 K-UNIT, 1852889-3 B 354500-1 G-UNIT, 1852889-4 B 122500-1 T-UNIT.

CRIMPING DATA table with columns: PAD LETTER, CRIMP HEIGHT, WIRE SIZE, STRIP LENGTH, TERMINAL P/N, CRIMP SIZE TYPE, FEED, WIRE, INS., INSULATION RANGE, TERM APPL SPEC.

- 1 RECOMMENDED SPARE PARTS
2 ITEMS NOT SHOWN
3 TOL ±.25
5 USE SEALANT PN 1-23419-5 AS SHOWN
7 AFTER QUALIFICATION, DRILL AND PIN ITEM 2 TO ITEM 1 USING ITEM 172, 2 PLACES. (-4 ONLY)
8 ITEM 69 TO BE ATTACHED TO ITEM 65 USING HOLES AS SHOWN IN VIEW B-B.
9 CANNOT RUN 2 WIRES ON LEADMAKER.
10. SPRING LOADED TONKER (P/N 354853-1) MUST BE USED WHEN RUNNING THE APPLICATOR ON A LEADMAKER.
11 OPTIONAL TOOLING WHEN APPLYING 2 WIRE COMBINATIONS.

Main parts list table with columns: QTY REQD PER ASSY, PART NO, DESCRIPTION, ITEM NO. Includes items like 1338955-4 HOLD DOWN, FIXED, 986950-1 WASHER, FLAT PRECISION, etc.

Main parts list table with columns: QTY REQD PER ASSY, PART NO, DESCRIPTION, ITEM NO. Includes items like 23030-1 SCR.SOC HD CAP 6-32 X .25 LG, 690212-1 POST, RAM, etc.

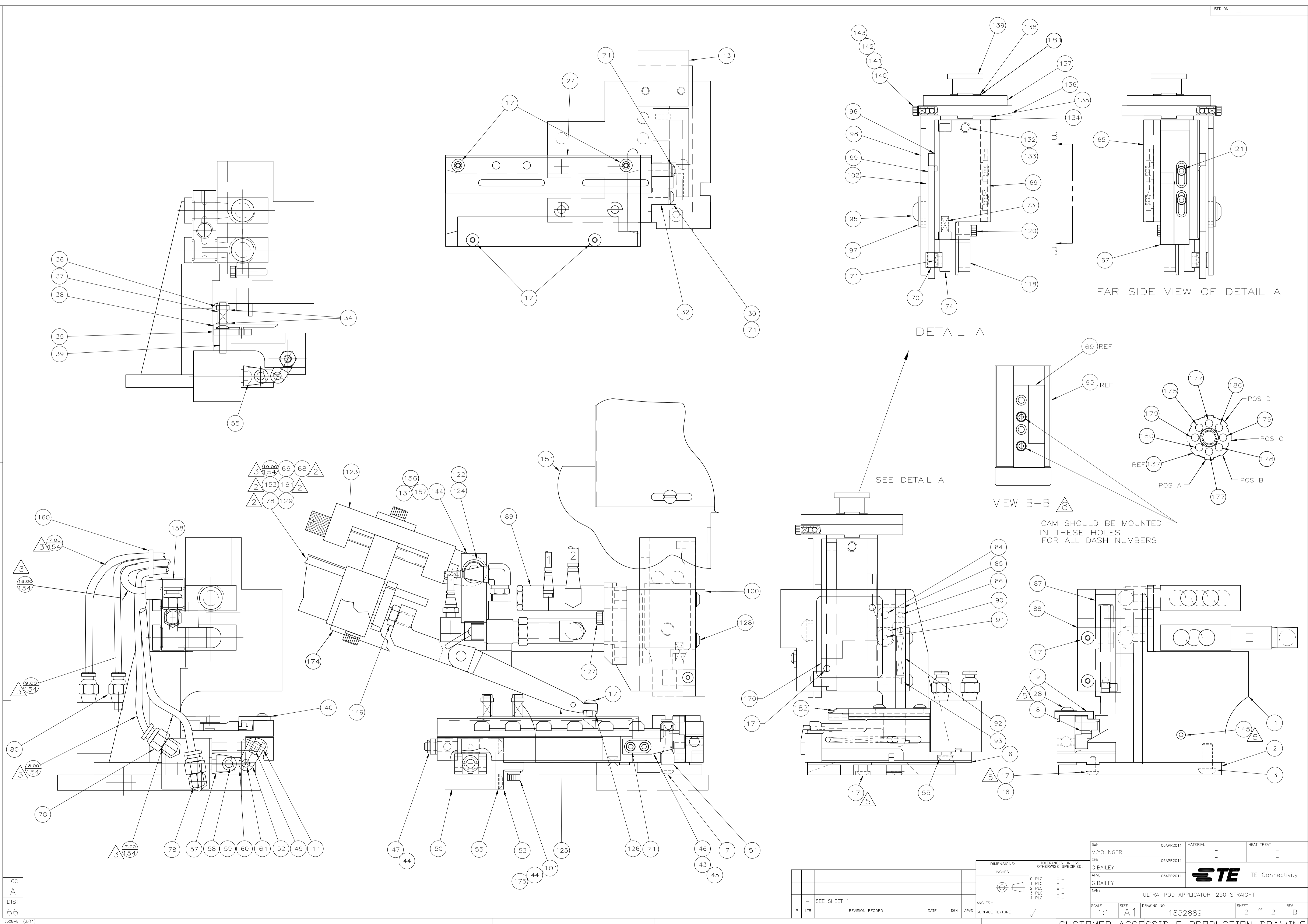
Main parts list table with columns: QTY REQD PER ASSY, PART NO, DESCRIPTION, ITEM NO. Includes items like 852248-1 STRIPPER, 852245-1 CAM, INSERT, etc.

LOC A, DIST 66, 3308-8 (3/11), 8, 7, 6, 5, 4, 3, 2, 1

Technical drawing footer including DIMENSIONS INCHES, TOLERANCES UNLESS OTHERWISE SPECIFIED, DIMENSIONS SURFACE TEXTURE, and CUSTOMER ACCESSIBLE PRODUCTION DRAWING.

DIMENSIONING AND TOLERANCING PER ASME Y14.5M (ISO STANDARDS)  
THIS DRAWING IS A CONTROLLED DOCUMENT.

DWG NO  
1852889



DETAIL A

FAR SIDE VIEW OF DETAIL A

VIEW B-B

CAM SHOULD BE MOUNTED IN THESE HOLES FOR ALL DASH NUMBERS

SEE DETAIL A

LOC A  
DIST 66

DIMENSIONS: INCHES		TOLERANCES UNLESS OTHERWISE SPECIFIED:	
0	PLC	±	0.005
1	PLC	±	0.005
2	PLC	±	0.005
3	PLC	±	0.005
4	PLC	±	0.005
ANGLES: SURFACE TEXTURE		✓	

DWN M. YOUNGER 06APR2011	MATERIAL	HEAT TREAT
CHK G. BAILEY 06APR2011		
APVD G. BAILEY 06APR2011	<b>STE</b> TE Connectivity	
NAME ULTRA-POD APPLICATOR .250 STRAIGHT		
SCALE 1:1	SIZE A1	DRAWING NO 1852889
SHEET 2	OF 2	REV B

CUSTOMER ACCESSIBLE PRODUCTION DRAWING