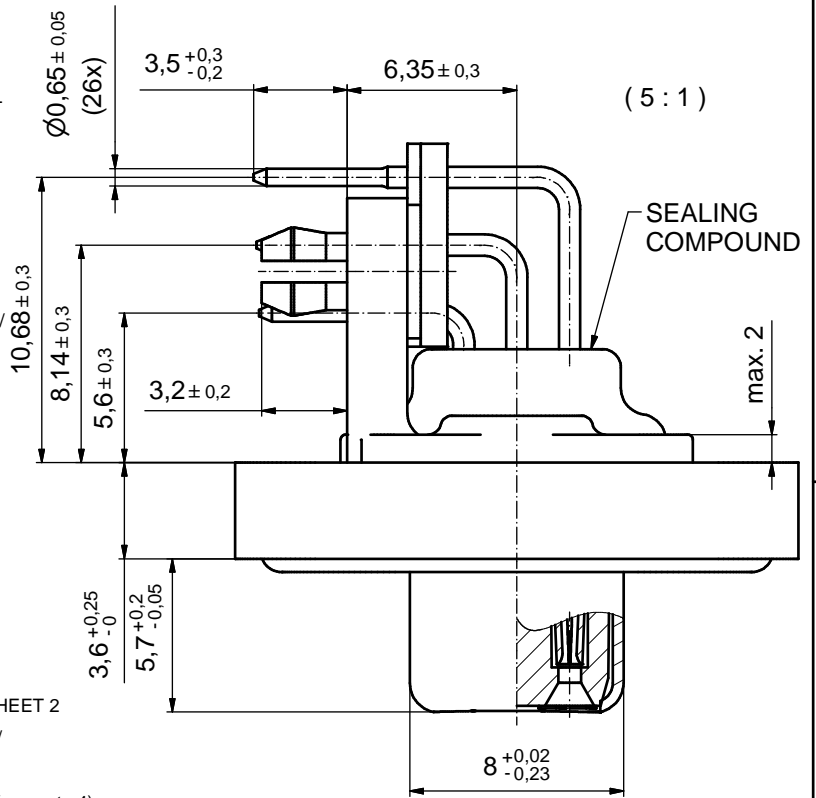
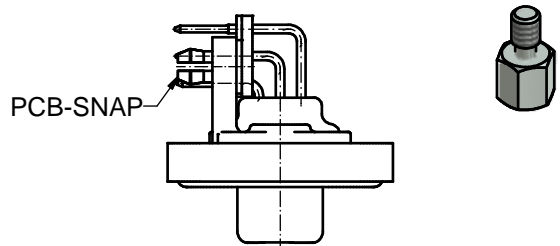
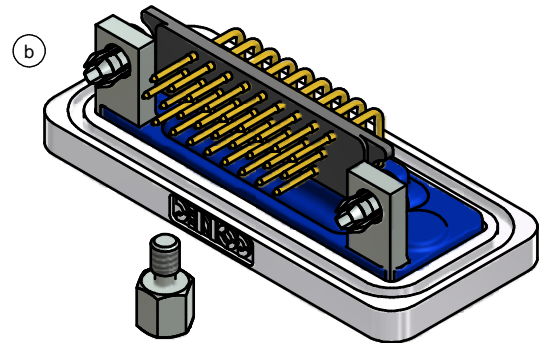
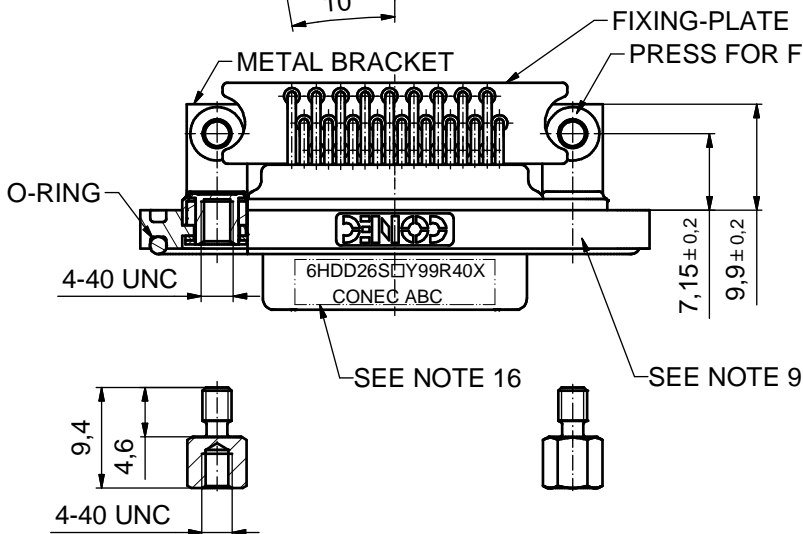
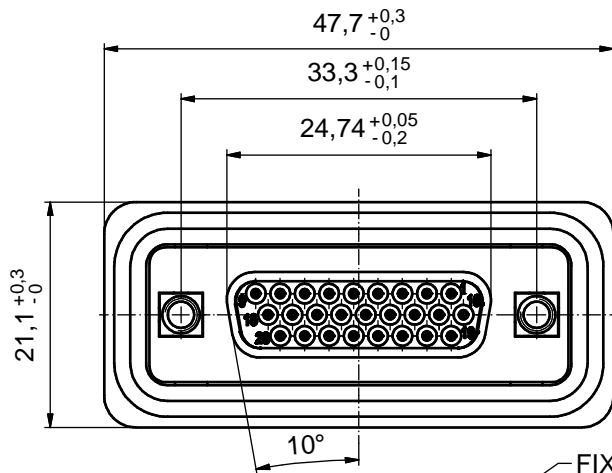


NOTES: (b)

1. FOR WAVESOLDERING (SOLDER BATH TEMPERATURE 240°C FOR 5 SEC. AND SOLDER PREHEAT 120°C FOR 120 SEC.)
2. METALSHELLS: COPPER ALLOY; min. 315µin TIN over 40-80µin NICKEL
3. INSULATORS: PBT GF UL 94 V-0; BLACK
4. CONTACTS: COPPER ALLOY
PLATING (SEE PART NO.):
□ PLEASE ADD C for 30µin HARD GOLD over min. 50µin NICKEL
□ PLEASE ADD B for 20µin HARD GOLD over min. 50µin NICKEL
□ PLEASE ADD A for GOLD FLASH over NICKEL (PREFERRED TYPE)
5. METAL BRACKETS: ZINC DIE CAST; 300µin COPPER/40-120µin NICKEL/ 120-200µin TIN
6. THREADED INSERTS: COPPER ALLOY; min. 200µin TIN over 80µin NICKEL
7. COLLARS: COPPER ALLOY; min. 200µin TIN over 80µin NICKEL
8. PCB-SNAPS: COPPER ALLOY; min. 200µin TIN over 80µin NICKEL
PCB-HOLE: $\varnothing 3,1 \pm 0,1$ mm; PCB-THICKNESS: 1,6mm
9. HEXLOCKING SCREWS: STAINLESS STEEL
10. FRAME: ZINC DIE CAST; NICKEL PLATED
11. FIXING PLATE: PBT GF UL 94 V-0; BLACK
12. O-RING: SILICON; BLUE
13. SEALING COMPOUND: PUR; BLUE
14. P.C.B. HOLE DRILLINGS AND RECOMMENDED PANEL CUT-OUT ON SHEET 2
15. RECOMMENDED TORQUE FOR MOUNTING SCREW 35Ncm (3.1 in.LB) / max.40Ncm (3.5 in.LB)
16. CONNECTOR IS PART MARKED: **6HDD26S□Y99R40X CONEC ABC** (see note 4)



AT ALL TIMES WATER RESISTANT CONNECTORS NOT IN USE SHOULD BE COVERED WITH A CONEC WATER RESISTANT CAP OR WATER TIGHT HOOD.



(b) SW 4,8

RoHS compliant (b)

THIS DRAWING MAY NOT BE COPIED OR REPRODUCED IN ANY WAY, AND MAY NOT BE PASSED ON TO A THIRD PARTY WITHOUT WRITTEN PERMISSION. OWNERSHIP AND COPYRIGHT OF CONEC GmbH DO NOT ALTER CAD DRAWING BY HAND	tolerance		dim. in mm		scale:	2:1 (5:1)
					material:	SEE NOTES
	date	name	title:			
	drawn 11.06.2015	Heinrich	D-SUB HD FEMALE 90°			
	appd. 11.06.2015	Lehmenkühler	26pos. SOLDER PIN ANGLED			
norm		with threaded insert, metal bracket, fixing-plate, snap				
d-old		dwg no:				DIN-A3
5 x c	A5675	10.06.15	M.H.	15K1A1646		
a	Original					sh: 1/2
rev.	description	date	name	part no: 6HDD26S□Y99R40X (see note 4)		

CONEC

(b)