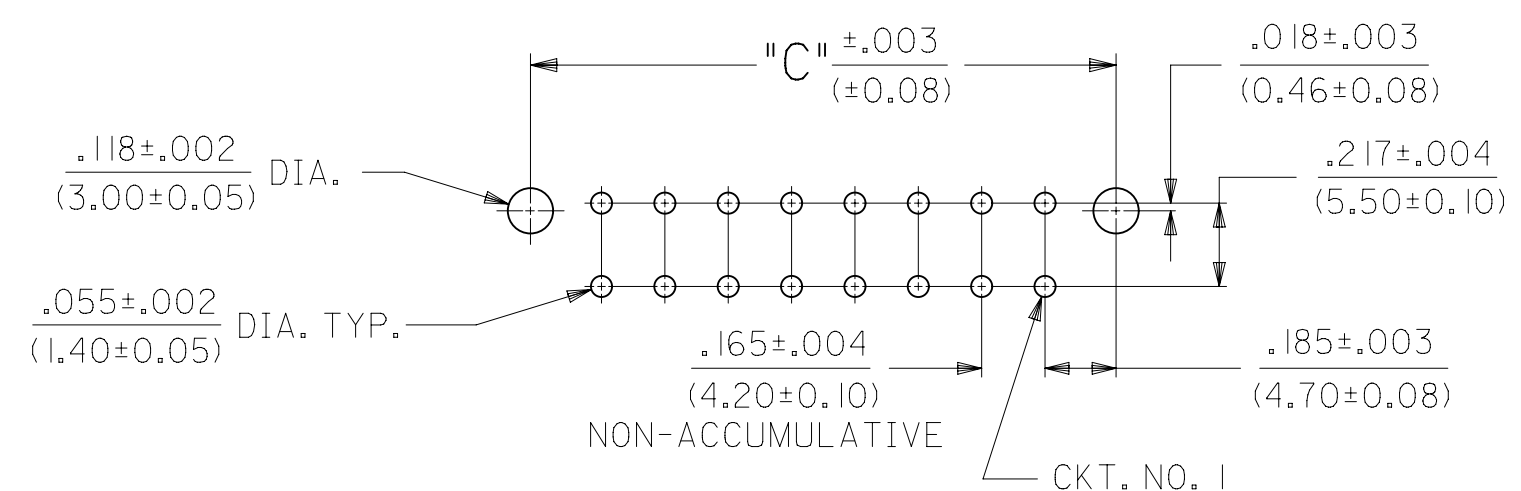
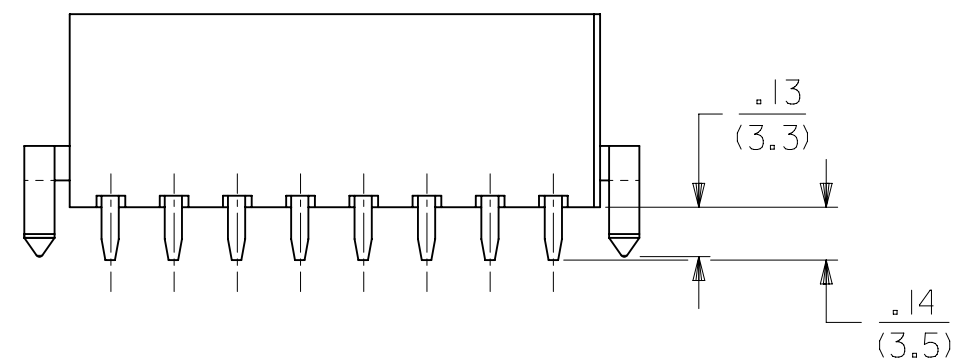
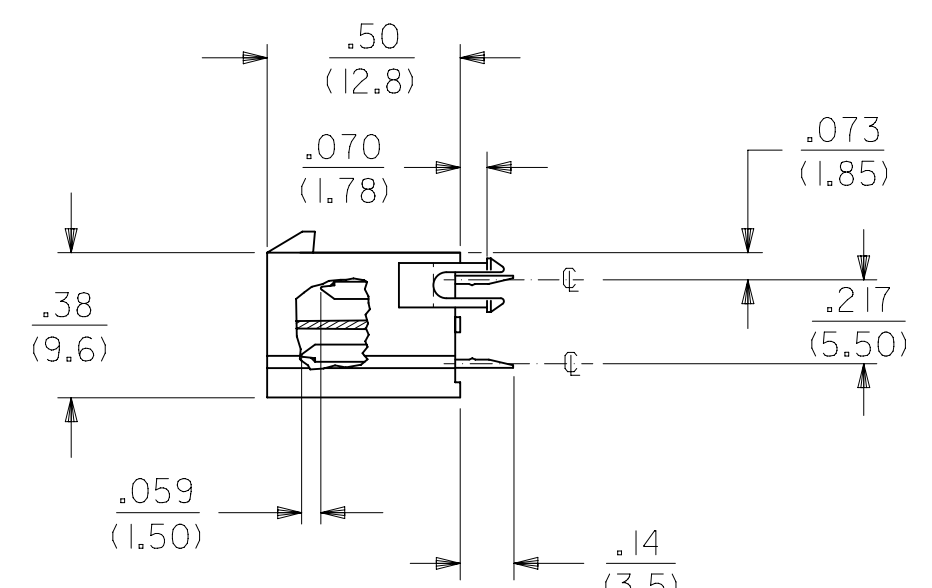
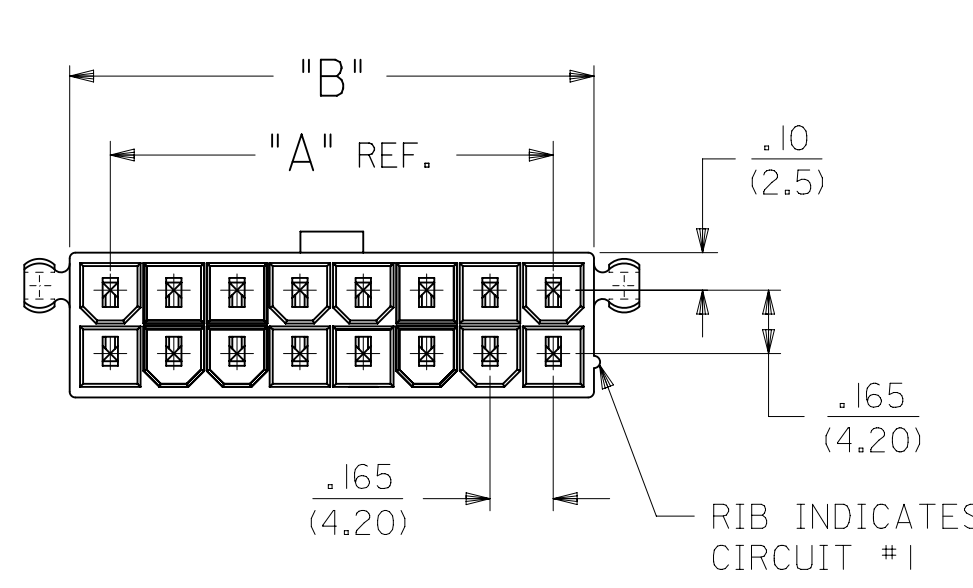
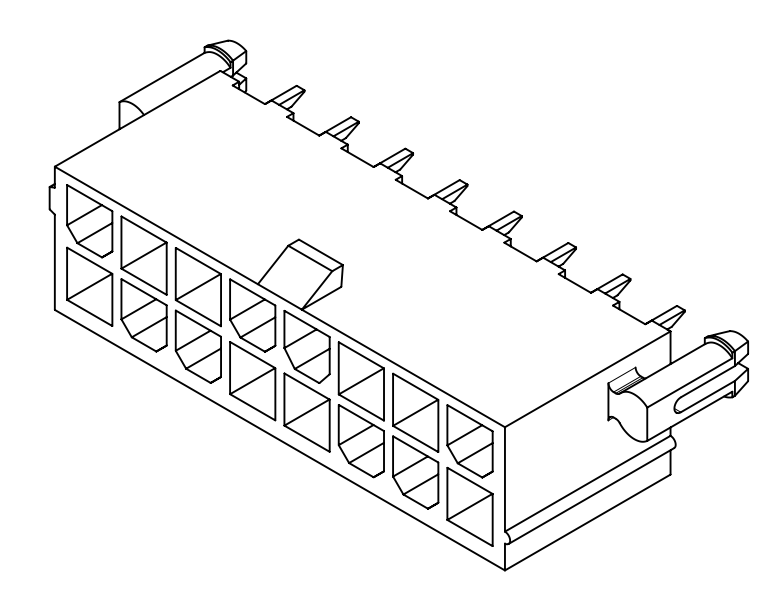


CIRCUIT SIZE	DIM. "A"	DIM. "B"	DIM. "C"
2	—	.21 (5.4)	.370 (9.40)
4	.17 (4.2)	.38 (9.6)	.535 (13.60)
6	.33 (8.4)	.54 (13.8)	.701 (17.80)
8	.50 (12.6)	.71 (18.0)	.866 (22.00)
10	.66 (16.8)	.87 (22.2)	1.031 (26.20)
12	.83 (21.0)	1.04 (26.4)	1.197 (30.40)
14	.99 (25.2)	1.20 (30.6)	1.362 (34.60)
16	1.16 (29.4)	1.37 (34.8)	1.528 (38.80)
18	1.32 (33.6)	1.54 (39.0)	1.693 (43.00)
20	1.49 (37.8)	1.70 (43.2)	1.858 (47.20)
22	1.65 (42.0)	1.87 (47.4)	2.024 (51.40)
24	1.82 (46.2)	2.03 (51.6)	2.189 (55.60)

- NOTES**
- HOUSING MATERIAL AND OPTIONS:
SEE CHARACTERISTICS LEGEND ON SHEET 2
TERMINAL MATERIAL: BRASS ALLOY
 - TERMINAL PLATING:
"A"= .000100/(.00254) MIN. MATTE TIN OVER .000050/(.00127) MIN. NICKEL. OVERALL
"D"= .000100/(.00254) MIN. BRIGHT TIN OVER .000050/(.00127) MIN. NICKEL. OVERALL
"E"= .000030/(.00076) MIN. SELECT GOLD, .000100/(.00254) MIN. SELECT MATTE TIN, OVER .000050/(.00127) MIN. NICKEL OVERALL
 - PRODUCT SPECIFICATION: PS-5556-001
 - PACKAGING SPECIFICATION: SEE CHART ON SHEET 2
 - PART MATES WITH MINI-FIT JR RECEPTACLE #5557
 - PARTS ARE NOT DESIGNED FOR CURRENT SHARING.
 - PART CONFORMS TO CLASS "B" REQUIREMENTS OF COSMETIC SPECIFICATION PS-45499-002
 - CONNECTOR ASSEMBLIES ARE NOT TO BE MATED OR UNMATED WHILE CIRCUITS ARE LIVE
 - TEXT ON PART IS FOR REFERENCE ONLY. TEXT AND TEXT LOCATION MAY VARY DEPENDING ON PART NUMBER AND/OR TOOL.



RECOMMENDED HOLE LAYOUT FOR .070/(1.78) MAX. THICK P.C. BOARD

VIEWED FROM COMPONENT SIDE

THIS DRAWING CONTAINS INFORMATION THAT IS PROPRIETARY TO MOLEX ELECTRONIC TECHNOLOGIES, LLC AND SHOULD NOT BE USED WITHOUT WRITTEN PERMISSION															
SYMBOLS		DIMENSION UNITS		SCALE		CURRENT REV DESC: INITIAL RELEASE									
∇ = 0	IN/MM	2:1		molex 2-24 CKT VERT HDR ASSY MIN-FIT JR MF/BL W/WO PEGS PRODUCT CUSTOMER DRAWING											
∇ = 0	GENERAL TOLERANCES (UNLESS SPECIFIED)									EC NO: 173061		DRWN: AZAHIROVIC 2018/02/26		2018/04/06	
∇ = 0										DRWN: AZAHIROVIC 2018/02/26		CHK'D: JBELL 2018/04/06		2018/04/13	
S = 0	4 PLACES	±	±	EC NO: 173061		DRWN: AZAHIROVIC 2018/02/26		2018/04/06							
∇ = 0	3 PLACES	±	± 0.015	DRWN: AZAHIROVIC 2018/02/26		CHK'D: JBELL 2018/04/06		2018/04/13							
∇ = 0	2 PLACES	± 0.38	± 0.02	APP: FSMITH 2018/04/13		INITIAL REVISION:									
∇ = 0	1 PLACE	± 0.5	±	APP: FSMITH 2018/04/13		DRWN: AFG 1994/12/14		2011/06/17							
∇ = 0	0 PLACES	±	±	ANGULAR TOL ± 0.5°		APP: FSMITH 2011/06/17		DRAWING SERIES							
∇ = 0	DRAFT WHERE APPLICABLE MUST REMAIN WITHIN DIMENSIONS			THIRD ANGLE PROJECTION		DRAWING SERIES		MATERIAL NUMBER CUSTOMER SHEET NUMBER							
∇ = 0				C-SIZE		43460		SEE SHEET 2 GENERAL MARKET 1 OF 2							

ITEM NO.	CHARACTERISTIC DESCRIPTION	TERMINAL VERSION REQUIRED AT EACH CIRCUIT LOCATION: (SEE CODES AT RIGHT)																								PACKAGING
		1	2	3	4	5	6	7	8	9	10	11	12	13	14	15	16	17	18	19	20	21	22	23	24	
43460-0011	02FAD	9	5	-	-	-	-	-	-	-	-	-	-	-	-	-	-	-	-	-	-	-	-	-	-	PK-5566-003
43460-0012	02AAA	8	1	-	-	-	-	-	-	-	-	-	-	-	-	-	-	-	-	-	-	-	-	-	-	PK-5566-001
43460-0013	08EAA	8	1	8	8	8	1	8	8	-	-	-	-	-	-	-	-	-	-	-	-	-	-	-	-	PK-5566-001
43460-0014	04FAA	1	8	8	8	-	-	-	-	-	-	-	-	-	-	-	-	-	-	-	-	-	-	-	-	PK-5566-001
43460-0015	24AAA	1	8	8	8	8	8	8	8	8	8	8	1	1	8	8	8	8	8	8	8	8	8	8	1	PK-5566-001
43460-0016	24AAE	3	10	10	10	10	10	10	10	10	10	10	3	3	10	10	10	10	10	10	10	10	10	3	PK-5566-001	
43460-0017	06BAE	10	10	10	3	3	10	-	-	-	-	-	-	-	-	-	-	-	-	-	-	-	-	-	-	PK-5566-001

TERM. CODES FOR CHART AT LEFT		
TERMINAL NO.	PLATING /	MATERIAL
1=MAKE-FIRST	A	BRASS
3=MAKE-FIRST	E	BRASS
5=MAKE-FIRST	D	BRASS
8=STANDARD	A	BRASS
9=STANDARD	D	BRASS
10=STANDARD	E	BRASS

CHARACTERISTICS LEGEND:

CIRCUIT SIZE: _____ (** * * *)
 (02-24)

HOUSING MATERIAL AND OPTIONS: _____ (* * * *)


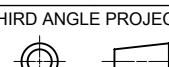
"A"=NYLON 6/6, UNFILLED U.L. 94V-2, WITH PEGS, COLOR: NATURAL.
 "B"=NYLON 6/6, UNFILLED U.L. 94V-0, WITH PEGS, COLOR: NATURAL.
 "E"=NYLON 6/6, UNFILLED U.L. 94V-2, WITHOUT PEGS, COLOR: NATURAL.
 "F"=NYLON 6/6, UNFILLED U.L. 94V-0, WITHOUT PEGS, COLOR: NATURAL.

TERMINAL MATERIAL: _____

"A"=BRASS ALLOY

TERMINAL PLATING (SEE NOTE 2): _____

"A"= 100 MIN. MATTE TIN OVER 50 MIN. NICKEL
 "D"= 100 MIN. TIN OVER 50 MIN. NICKEL
 "E"= 30 MIN. GOLD AND 100 MIN. MATTE TIN OVER 50 MIN. NICKEL

SYMBOLS	THIS DRAWING CONTAINS INFORMATION THAT IS PROPRIETARY TO MOLEX ELECTRONIC TECHNOLOGIES, LLC AND SHOULD NOT BE USED WITHOUT WRITTEN PERMISSION												
	DIMENSION UNITS	SCALE		CURRENT REV DESC: INITIAL RELEASE									
▽ = 0	IN/MM	1:1		EC NO: 173061 DRWN: AZAHIROVIC 2018/02/26 CHK'D: JBELL 2018/04/06 APPR: FSMITH 2018/04/13								2-24 CKT VERT HDR ASSY MIN-FIT JR MF/BL W/WO PEGS	
▽ = 0	GENERAL TOLERANCES (UNLESS SPECIFIED)									INITIAL REVISION: DRWN: AFG 1994/12/14 APPR: FSMITH 2011/06/17			
▽ = 0	4 PLACES ±		MM	INCH	DOCUMENT NUMBER 434600000-SD								
▽ = 0	3 PLACES ±		± 0.015								MATERIAL NUMBER SEE SHEET 2		
▽ = 0	2 PLACES ±		± 0.38	± 0.02	THIRD ANGLE PROJECTION 								
▽ = 0	1 PLACE ±		± 0.5	±							DRAFT WHERE APPLICABLE MUST REMAIN WITHIN DIMENSIONS		
▽ = 0	0 PLACES ±		±	±	C-SIZE 43460								
▽ = 0	ANGULAR TOL ± 0.5 °										THIS DRAWING REPLACES DRAWING SDA-43460-****		
▽ = 0	DRAFT WHERE APPLICABLE MUST REMAIN WITHIN DIMENSIONS				DOCUMENT STATUS P1 RELEASE DATE 2018/04/13 22:56:46								