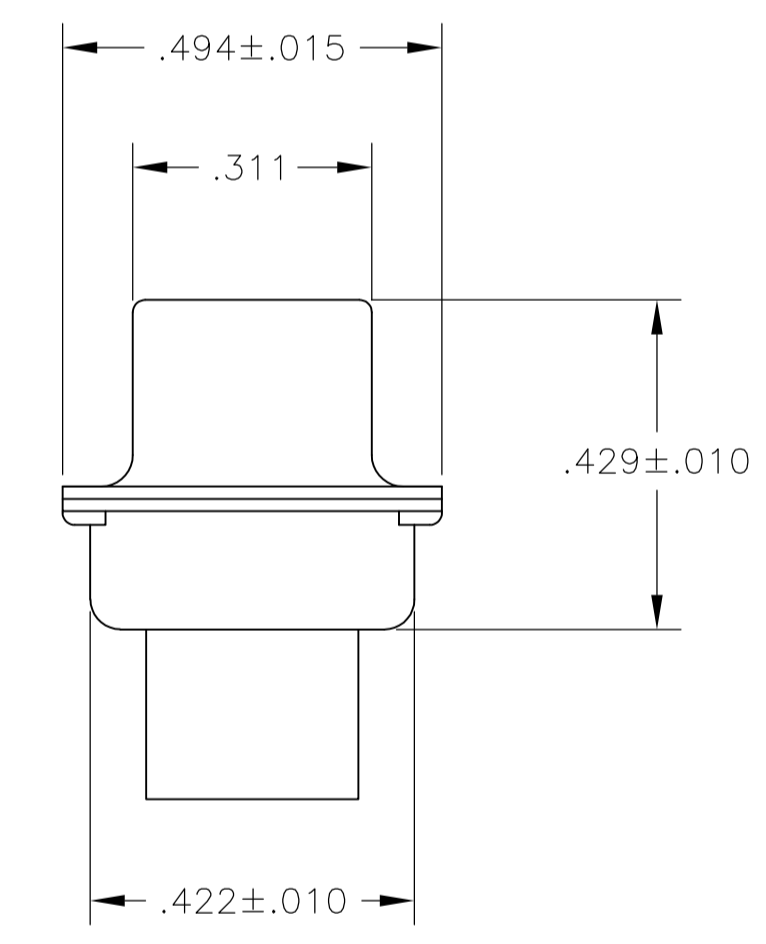
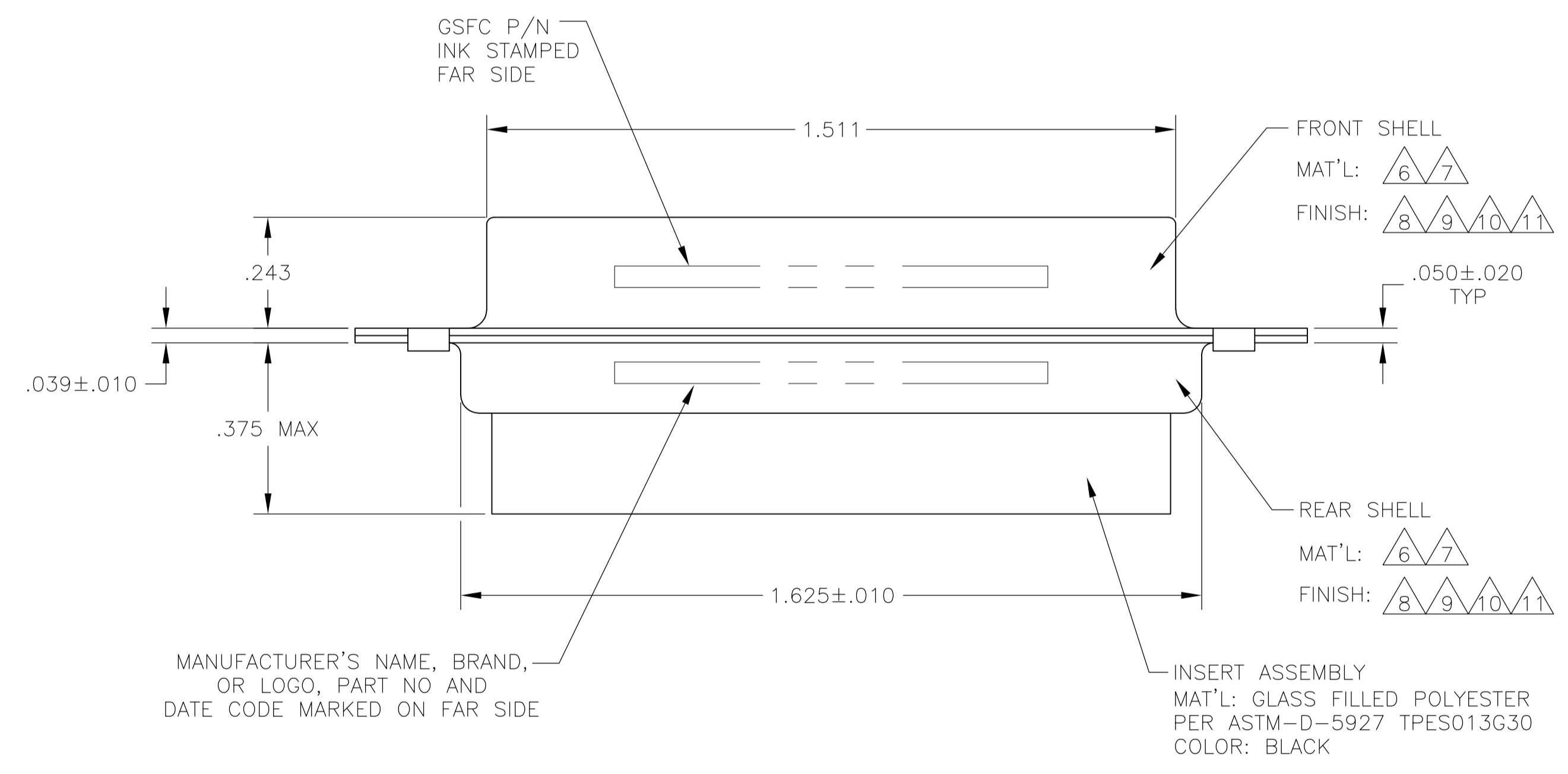
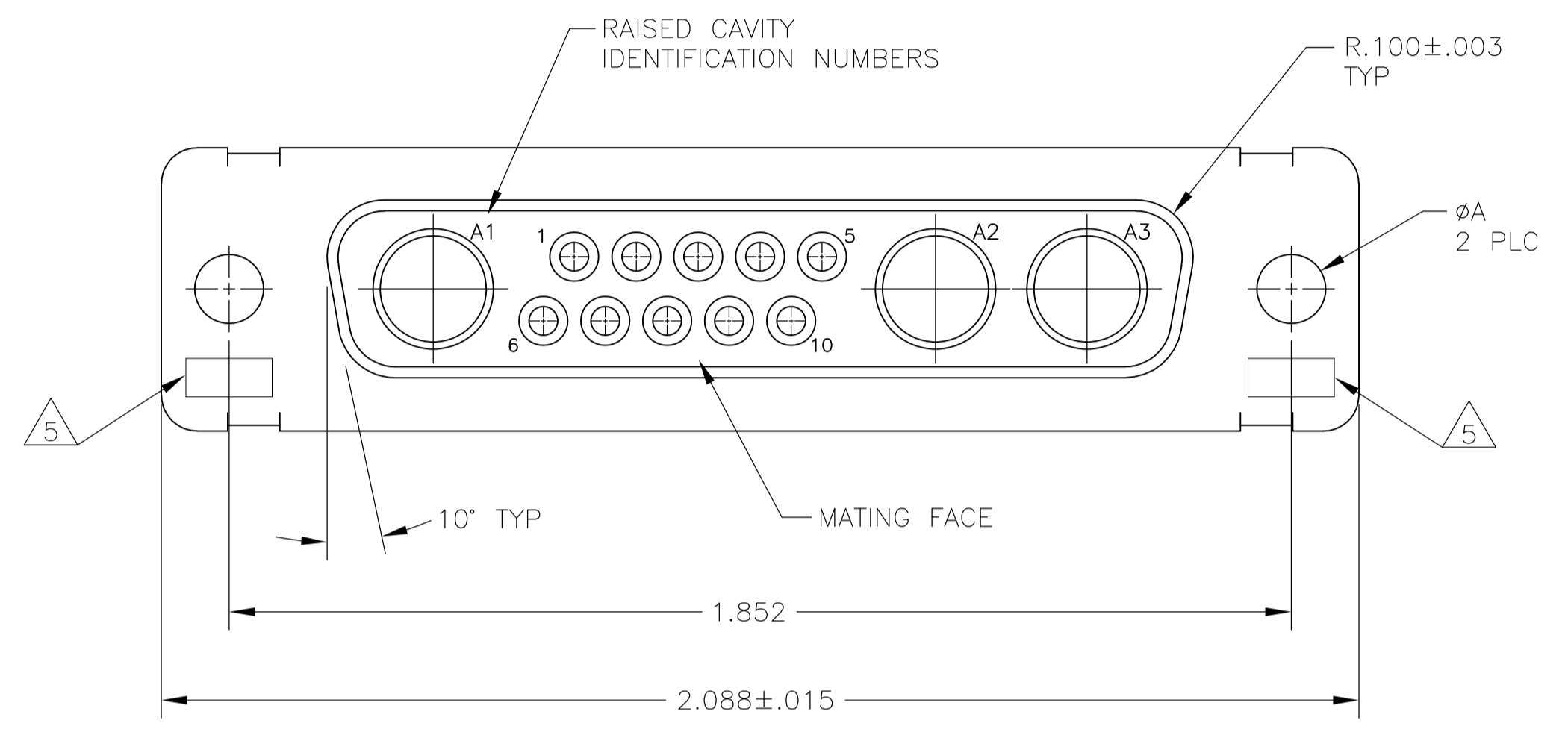


LOC		DIST		REVISIONS			
P	LTR	DESCRIPTION	DATE	DN	APVD		
T		REVISED PER ECO-15-016251	13NOV15	KG	CD		

- THIS RECEPTACLE WILL MATE WITH ANY 13C3, SIZE 3 PLUG IN AMPLIMITE SERIES.
  - MAXIMUM WIRE INSULATION TO BE USED WITH THIS RECEPTACLE IS  $\phi .068$ .
  - THIS CONNECTOR ACCEPTS (3) POWER 8, OR COAX SOCKET CONTACTS IN POSITIONS A1 THRU A3, PURCHASED SEPARATELY.
  - THIS CONNECTOR ACCEPTS SIZE 20 SOCKET SIGNAL CONTACTS IN POSITIONS 1 THRU 10, PURCHASED SEPARATELY.
- $\triangle 5$  UL/CSA DESIGNATION STAMPED IN THIS AREA, OPTIONAL.
  - $\triangle 6$  STEEL PER ASTM-A-109.
  - $\triangle 7$  BRASS PER MIL-C-50 AND ASTM-B-36 UNS NO. C26000.
  - $\triangle 8$  FINISH: CADMIUM PLATED PER QQ-P-416.
  - $\triangle 9$  FINISH: TIN PER ASTM-B-545 .000400 MIN THK OVER COPPER PER AMS2418 .000050 MIN THK.
  - $\triangle 10$  GOLD PLATED PER ASTM-B-488 TYPE II, GRADE C, CLASS 1 OVER COPPER PER AMS2418, CLASS IV.
  - $\triangle 11$  FINISH: ZINC PLATE PER ASTM-B-633, .000200-.000400 THK WITH SUPPLEMENTARY CHROMATE (Cr3+)



REMARKS	$\phi A$	GSFC P/N	PART NO.
$\triangle 6 \triangle 9$	.120	-	5-208811-2
$\triangle 6 \triangle 11$	.120	-	5-208811-1
$\triangle 7 \triangle 10$	.154	311P405-12S-B-15	208811-4
$\triangle 7 \triangle 10$	.120	311P405-12S-B-12	208811-3
$\triangle 6 \triangle 9$	.120	-	208811-2
$\triangle 6 \triangle 8$	.120	-	208811-1

THIS DRAWING IS A CONTROLLED DOCUMENT.

DIMENSIONS: INCHES	TOLERANCES UNLESS OTHERWISE SPECIFIED:	DIN C.C.THOMAS 04FEB88	APVD A.FMADI 09FEB88	NAME RECEPTACLE ASSEMBLY AMPLIMITE 13C3 SIZE 3, SERIES 109, COAX MIX
0 PLC ± -	1 PLC ± -	2 PLC ± -	3 PLC ± .005(0.13)	4 PLC ± ± 0', 30'
MATERIAL	FINISH	WEIGHT	SIZE A1 00779C=208811	RESTRICTED TO
CUSTOMER DRAWING		SCALE 4:1	SHEET 1 OF 1	REV T

STE TE Connectivity