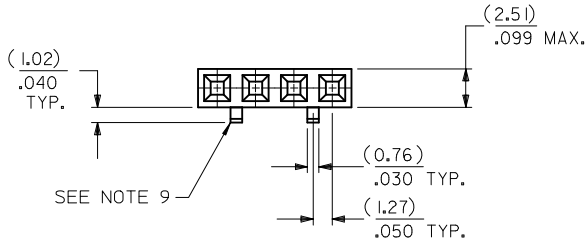


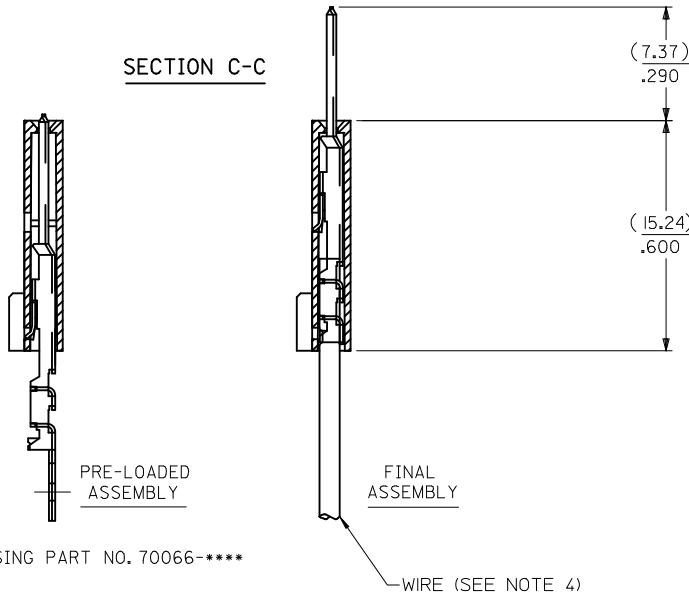
OPTION D

- NOTES:
- MATERIAL: HOUSING - G.F. POLYESTER, 94V-0
TERMINAL - PHOSPHOR BRONZE
 - FINISH: 0.38 MICROMETERS/15 MICROINCHES MINIMUM GOLD
IN SELECT AREA
1.91 MICROMETERS/75 MICROINCHES MINIMUM TIN
IN SELECT AREA
OVER NICKEL UNDERPLATE OVER-ALL.
 - PRODUCT SPECIFICATION: PS-70400
 - TO BE USED WITH 28 AWG. STANDARD WIRE WITH
1.35/.053 DIAMETER MAXIMUM INSULATION.
 - SEE CHART FOR CIRCUIT SIZES.
 - STANDARD PACKAGING PER PK-70873-0001. OPTIONAL
PACKAGING MAY BE AVAILABLE. REQUEST DRAWING
PK-70475.
 - PARTS STACKABLE END TO END ON 2.54/100 CENTERS
 - SEE DRAWING SDA-70457-**** (SHEET 3) FOR OPTIONAL
HOUSING DETAILS.
 - 4 CIRCUIT SHOWN. 3-25 CIRCUITS HAVE 2 RIBS.
 - TO MATE WITH MOLEX PART NUMBERS: 70018-0000,
70022-****, 70104-****.
 - 2 CIRCUIT ASSEMBLIES SUPPLIED AS GROUPED PAIRS.



CIRCUIT NO. 1
IDENTIFICATION
SLOT OR ARROW

SECTION C-C



HOUSING PART NO. 70066-****
TERMINAL PART NO. 70110-****

WIRE (SEE NOTE 4)

CKT. SIZE	A	B	EDP. NO.	ENG. NO.
2	(2.54) .100	(5.05) .199	14-44-2102	A-70475-0946
3	(5.08) .200	(7.59) .299	14-44-2103	A-70475-0947
4	(7.62) .300	(10.13) .399	14-44-2104	A-70475-0948
5	(10.16) .400	(12.67) .499	14-44-2105	A-70475-0949
6	(12.70) .500	(15.21) .599	14-44-2106	A-70475-0950
7	(15.24) .600	(17.75) .699	14-44-2107	A-70475-0951
8	(17.78) .700	(20.29) .799	14-44-2108	A-70475-0952
9	(20.32) .800	(22.83) .899	14-44-2109	A-70475-0953
10	(22.86) .900	(25.37) .999	14-44-2110	A-70475-0954
11	(25.54) 1.000	(27.91) 1.099	14-44-2111	A-70475-0955
12	(27.94) 1.100	(30.45) 1.199	14-44-2112	A-70475-0956
13	(30.48) 1.200	(32.99) 1.299	14-44-2113	A-70475-0957
14	(33.02) 1.300	(35.53) 1.399	14-44-2114	A-70475-0958
15	(35.56) 1.400	(38.07) 1.499	14-44-2115	A-70475-0959
16	(38.01) 1.500	(40.61) 1.599	14-44-2116	A-70475-0960
17	(40.64) 1.600	(43.15) 1.699	14-44-2117	A-70475-0961
18	(43.18) 1.700	(45.69) 1.799	14-44-2118	A-70475-0962
19	(45.72) 1.800	(48.23) 1.899	14-44-2119	A-70475-0963
20	(48.26) 1.900	(50.77) 1.999	14-44-2120	A-70475-0964
21	(50.80) 2.000	(53.31) 2.099	14-44-2121	A-70475-0965
22	(53.34) 2.100	(55.85) 2.199	14-44-2122	A-70475-0966
23	(55.88) 2.200	(58.39) 2.299	14-44-2123	A-70475-0967
24	(58.42) 2.300	(60.93) 2.399	14-44-2124	A-70475-0968
25	(60.96) 2.400	(63.47) 2.499	14-44-2125	A-70475-0969



I.D. SLOT CODE TO WIRE GAUGE CHART	
I.D. SLOT CODE	WIRE GAUGE
C	28 AWG.

PLATING CODE (STRIPE ON CARRIER STRIP)	
PLATING	COLOR
15 GOLD	YELLOW

ADD GEN TOLERANCES EC NO: UCP2011-3892 DRWINHIS IBARRA 2011/06/27 CHKD:MORGAN APPR:SMILLER 2011/07/07	QUALITY SYMBOLS ▽=0 ▽=0 ▽=0	GENERAL TOLERANCES (UNLESS SPECIFIED) mm INCH 4 PLACES ± --- ± --- 3 PLACES ± --- ± .010 2 PLACES ± 0.25 ± .014 1 PLACE ± 0.35 ± --- ANGULAR ± 1/2°	DIMENSION STYLE MM/IN DRAWN BY DATE WAZ 10/13/1984 CHECKED BY DATE WAZ 10/13/1984 APPROVED BY DATE RL 10/13/1984	SCALE 4:1 DESIGN UNITS INCH THIRD ANGLE PROJECTION	TITLE ASSEMBLY, SL CONNECTOR SINGLE ROW 2.54/100 GRID MOLEX MOLEX INCORPORATED SDA-70475-0946-0969 SHEET NO. 1 OF 1	
		DRAFT WHERE APPLICABLE MUST REMAIN WITHIN DIMENSIONS		MATERIAL NO. SEE TABLE SIZE C		DOCUMENT NO.
		THIS DRAWING CONTAINS INFORMATION THAT IS PROPRIETARY TO MOLEX INCORPORATED AND SHOULD NOT BE USED WITHOUT WRITTEN PERMISSION				MOLEX
						MOLEX