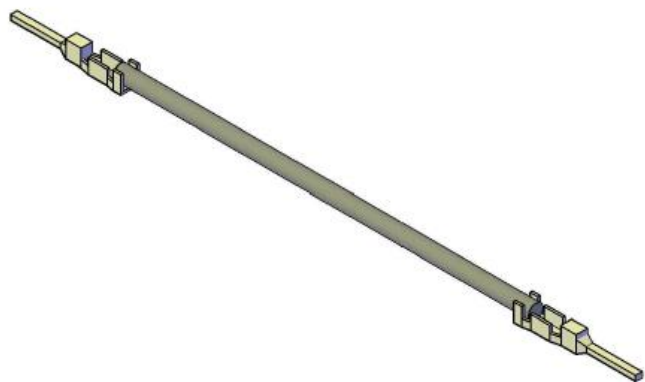
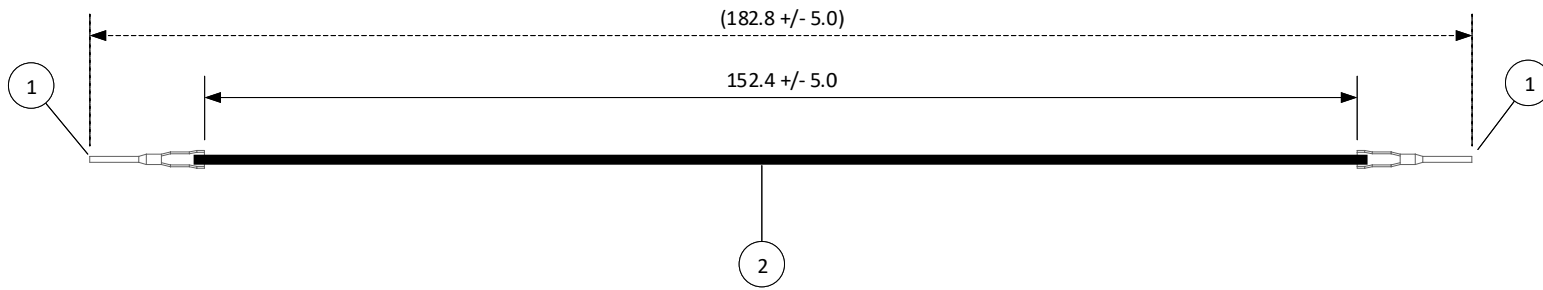


THIS DRAWING CONTAINS INFORMATION THAT IS PROPRIETARY TO J.S.T. AND SHALL NOT BE USED OR SHOWN WITHOUT WRITTEN PERMISSION.

4		3		2		1	
ITEM	CONNECTOR PART NO.	DESCRIPTION	IPI CHECK	EOR CHECK	Applicable Tooling		
1	SWPT-001T-P025	JWPF CONNECTOR CONTACT			APPLICATOR		
2	UL1007, 22 AWG	BLACK					

Applicable Housings	
NO. OF CIRCUITS	HOUSING PART NO.
2	02T-JWPF-VSLE-S
3	03T-JWPF-VSLE-S
4	04T-JWPF-VSLE-S
6	06T-JWPF-VSLE-D
8	08T-JWPF-VSLE-D



JST

SCALE	CUSTOMER NAME	CUSTOMER PART NO.
1:1		
DIMENSIONS	DESCRIPTION	
All dimensions are in MM with a tolerance of +/- 3.0 unless otherwise specified.	2.0 mm Pitch JWPF Series Standard Leads - 6" Inside Length DOUBLE-END LEADS, M-M	
DRAWN BY	ASSEMBLY PART NO.	
STEVEN PILKINGTON	AJWPFJWPF22K152T	
CHECKED BY	DRAWING NO. & REVISION	REVISED
JUSTIN BAKER	GAM-173	5/2/2016

REV.	DESCRIPTION	DATE	BY