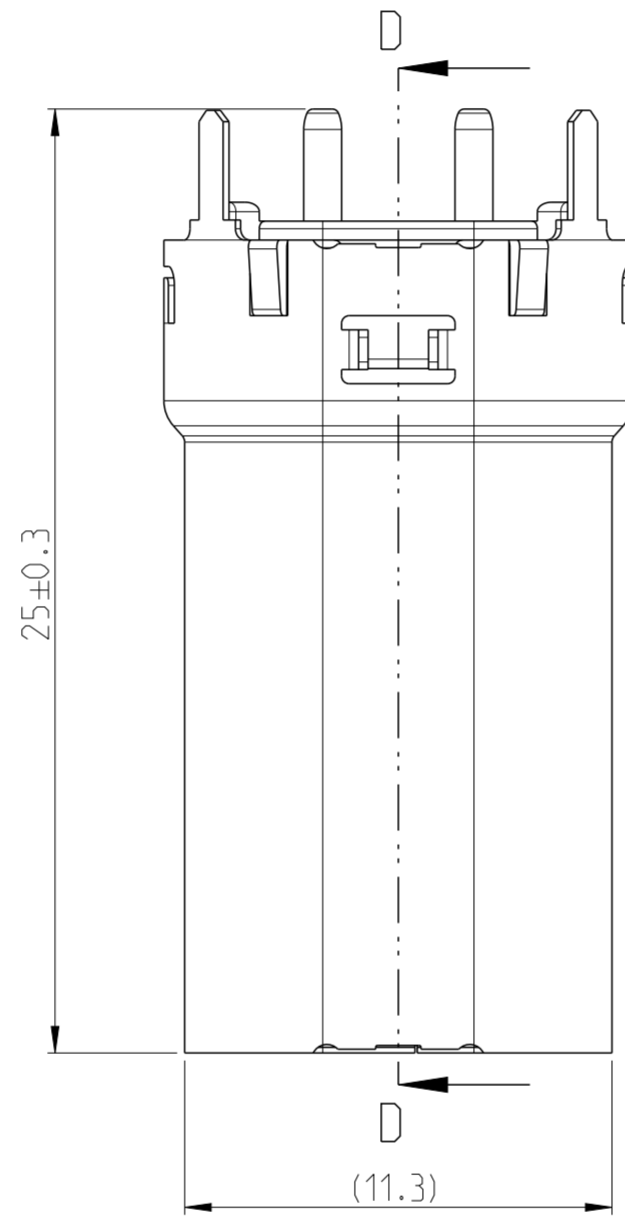
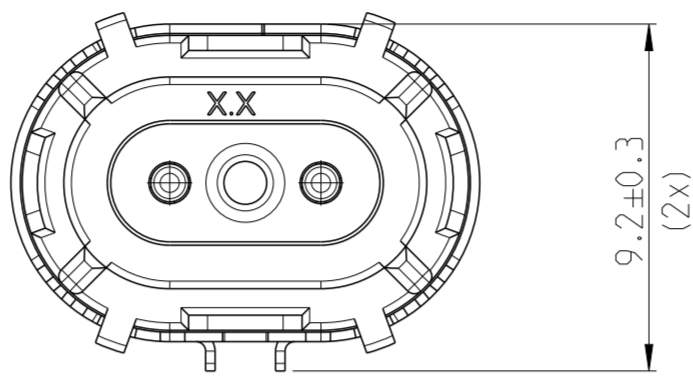
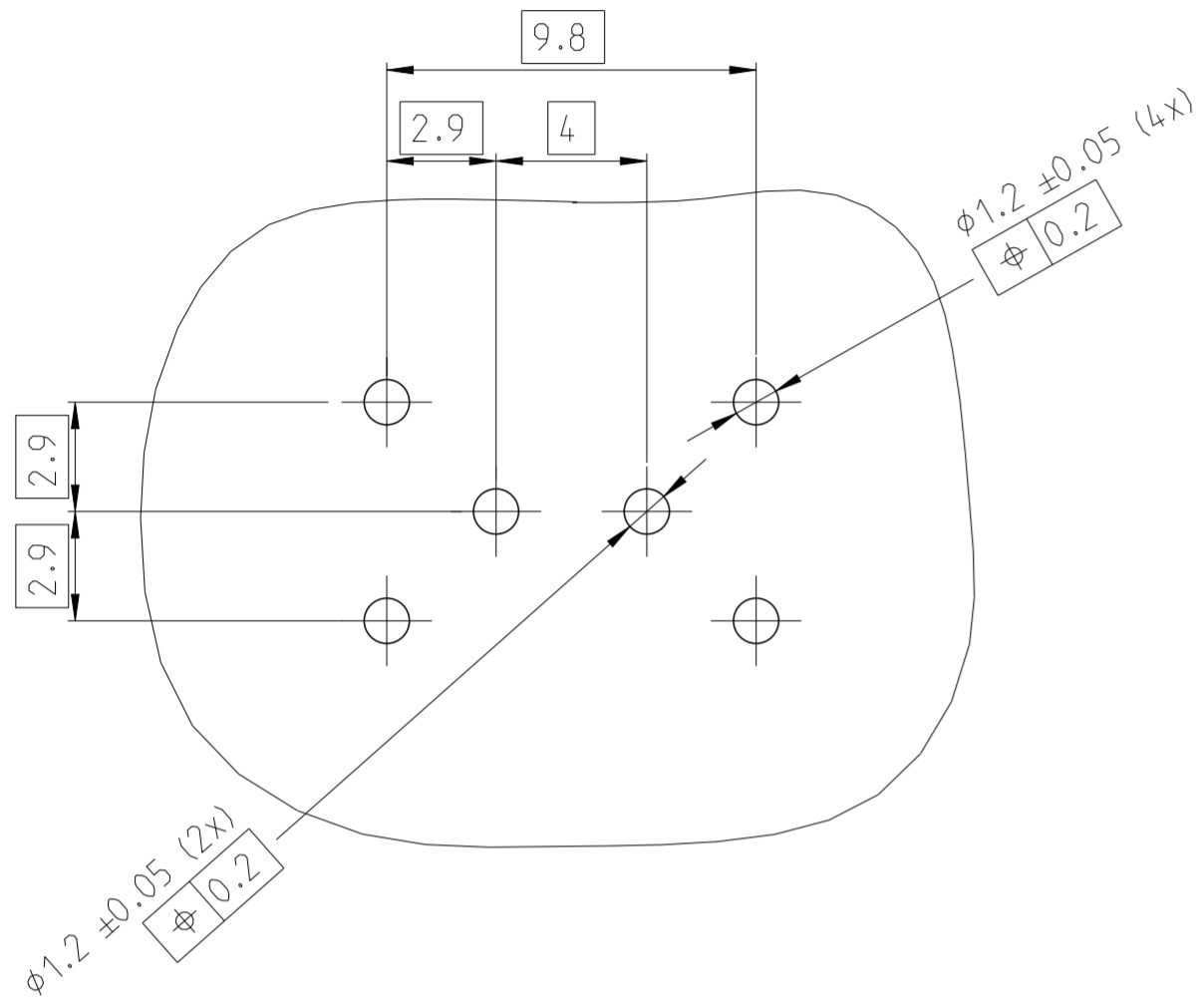
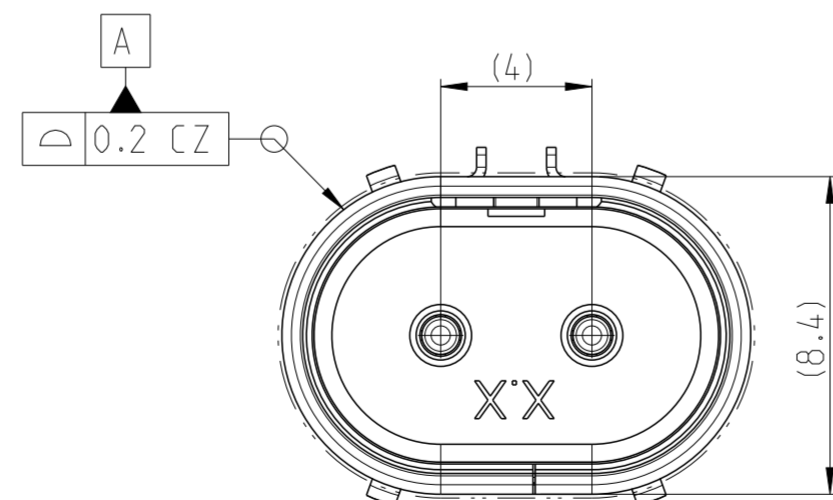
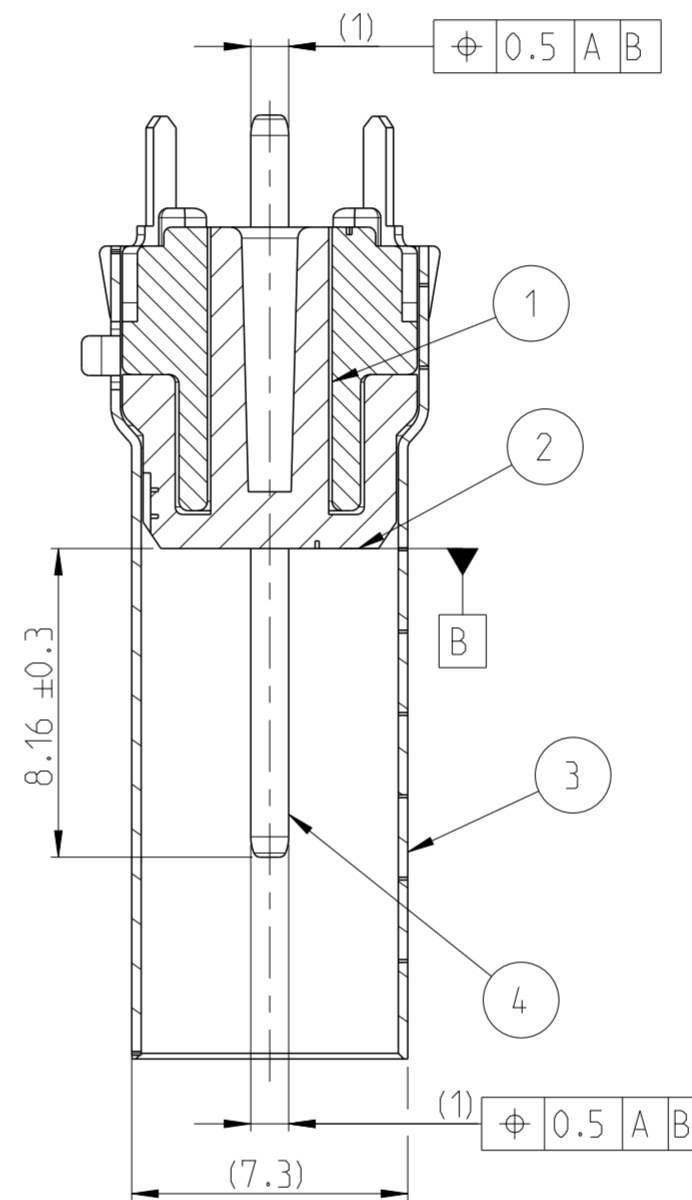


PCB LAYOUT  
 Platinen Layout  
 RECOMMENDED PCB LAYOUT / CUSTOMER IS RESPONSIBLE FOR LAYOUT  
 Empfohlenes Platinen Layout / Kunde ist verantwortlich fuer das Layout



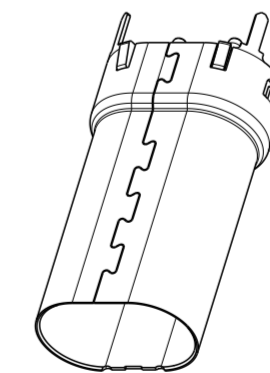
SECTION D-D



NOTES  
 Bemerkungen

- 1 TRAY PACKAGING  
Tray verpackung
- 2 MATED WITH DATA DT HEADER ASSY SEE DRAWING: 2367359  
Passend zu Data DT Messerleis Baugruppe Zeichnung: 2367359
- 3 100% ELECTRIC, CONTINUITY, SHORT CIRCUIT AND PRESENCE TESTING AND FUNCTIONAL TESTING OF PIN POSITION WITH MASK  
100% elektrische-, Durchgangs-, Kurzschluss- und Anwesenheitspruefung und funktioneller test der Pinposition mit einer Maske

ISOMETRIC VIEW  
 SCALE 2:1



1	2	3	4	ITEM NO
DIE CAST HOUSING Druckguss Gehaeuse	INNER HOUSING Innengehaeuse	SHIELD Schirmblech	HEADER PIN Messerleiste PI	DESCRIPTION Beschreibung
BLANK	BLACK schwarz	-	-	COLOUR Farbe
Zamak Z35523	PBT-GF15	CuNi10Co1Si	C19700	MATERIAL

9-2370706-1	A	1	1	1	2	1
TE ORDER-NO. TE Bestell-Nr.	REV.	QUANTITY Stueck			ITEM NO ASSY	

THIS DRAWING IS A CONTROLLED DOCUMENT.		DWN K. Schang 01MAR2020	TE Connectivity DT HIGHSPEED 180 HEADER ASSY DT Highspeed 180 Messerleiste Bgr.			
DIMENSIONS: mm		CHK S. Helm 01MAR2020				
TOLERANCES UNLESS OTHERWISE SPECIFIED:		APVD J. Barth 01MAR2020	NAME	RESTRICTED TO		
0 PLC ±		PRODUCT SPEC	108-94825			
1 PLC ±		APPLICATION SPEC	114-94706			
2 PLC ±		WEIGHT	-			
3 PLC ±		CUSTOMER DRAWING	SCALE	5:1		
4 PLC ±		FINISH	SHEET		1 OF 1	
ANGLES ±		REV B				