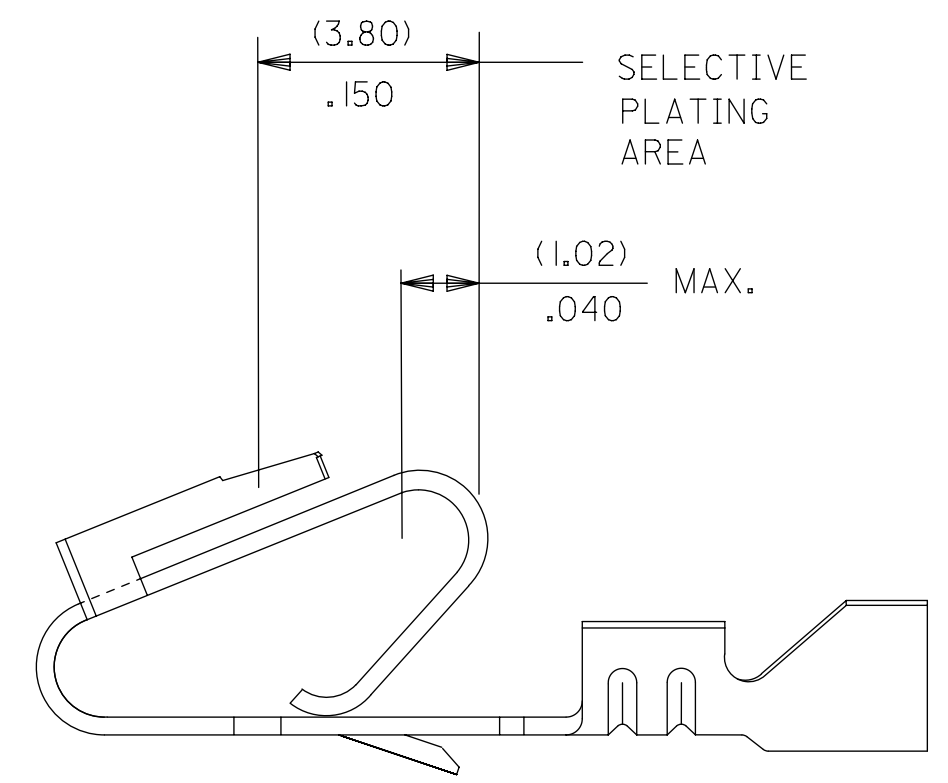
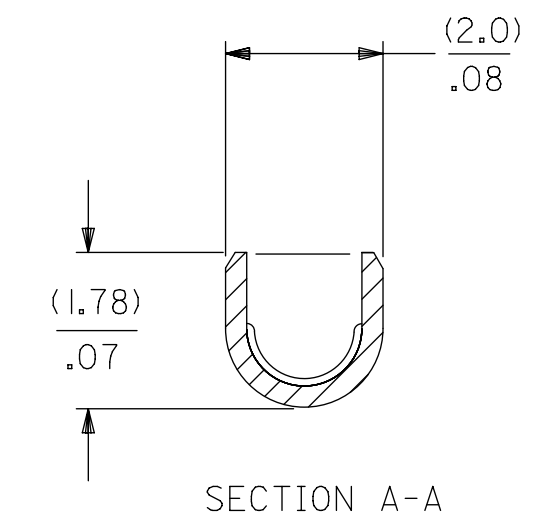
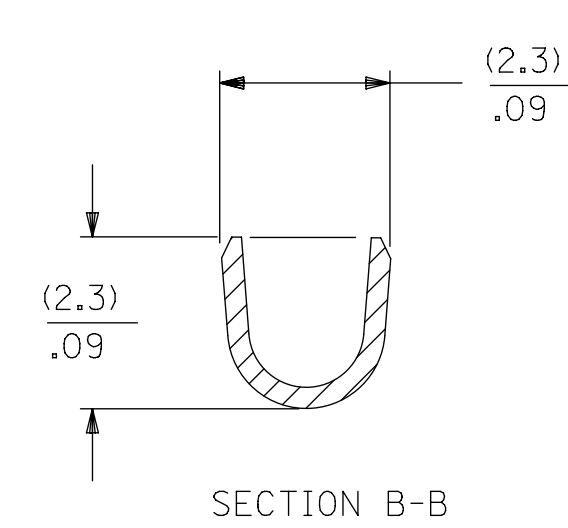
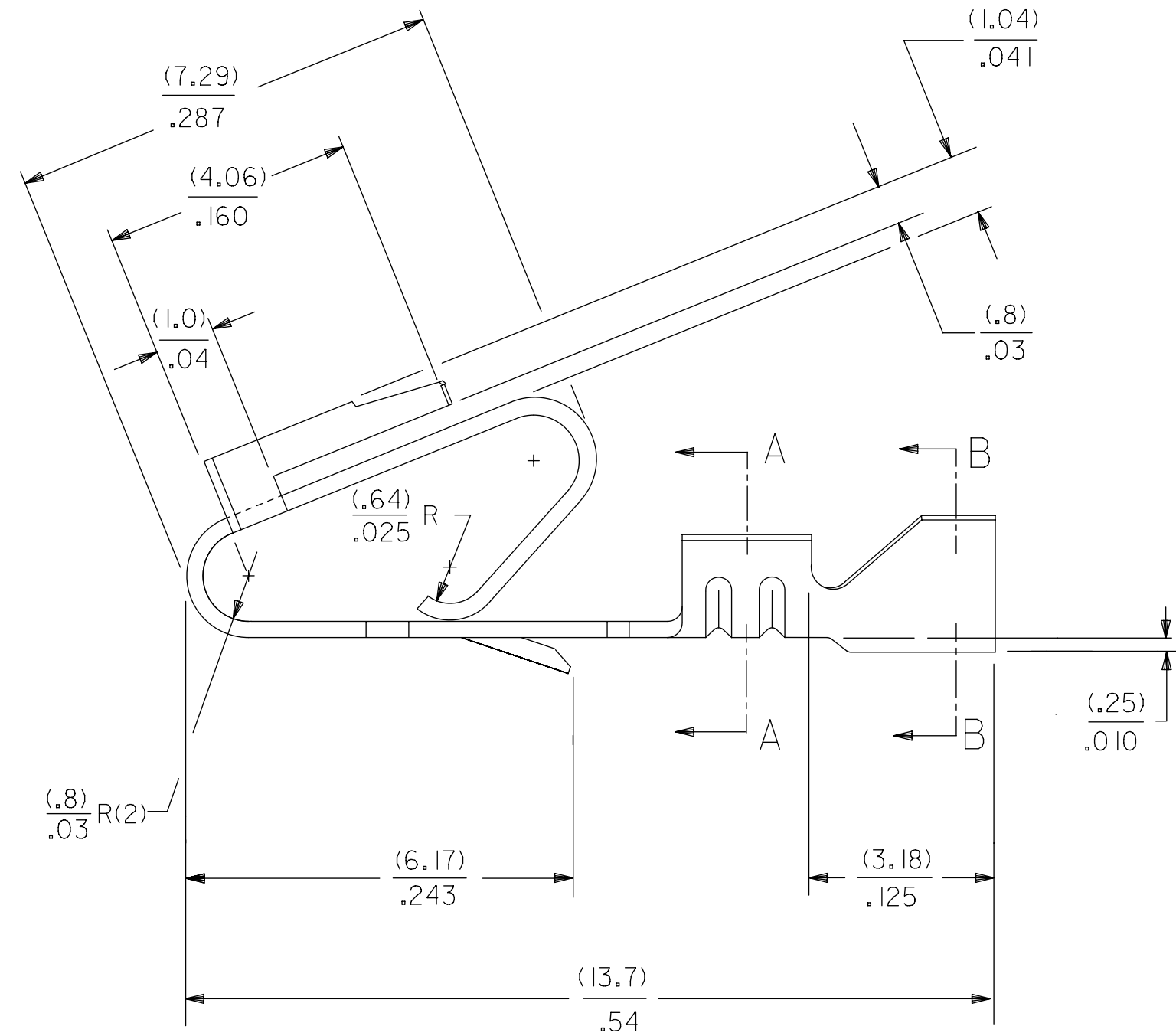
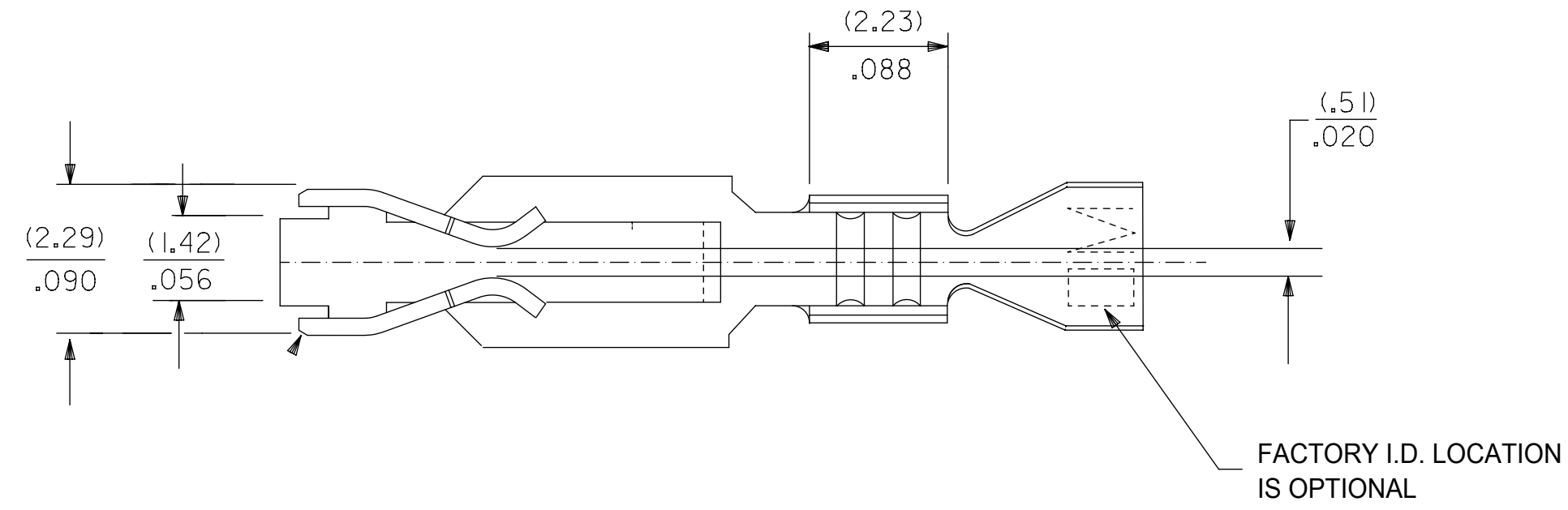
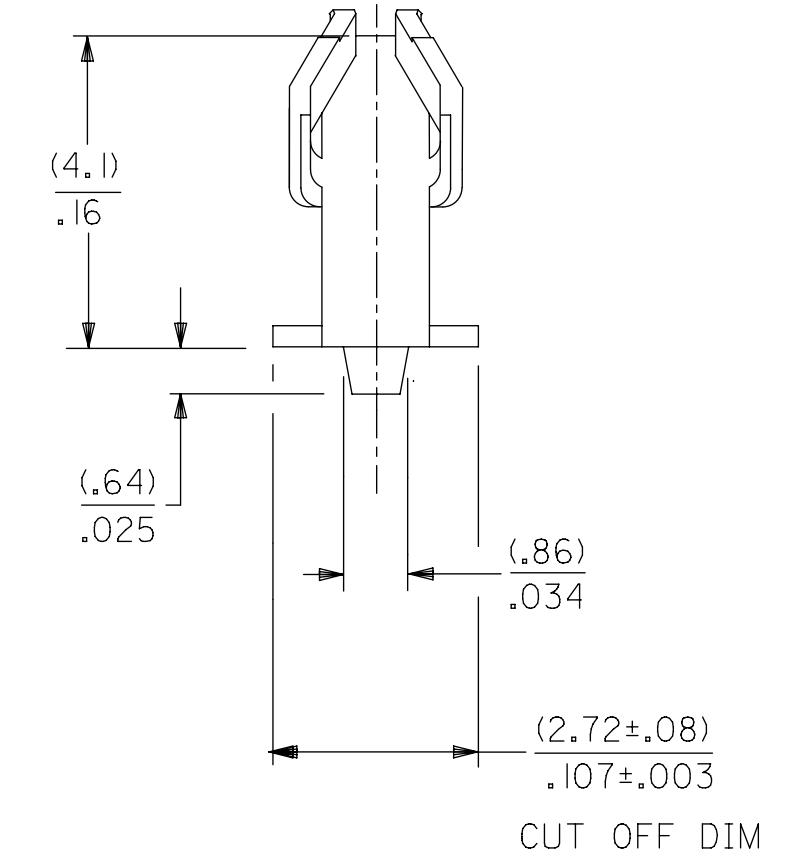


- NOTES:
1. MATERIAL: SEE LEGEND
  2. FINISH: SEE LEGEND
  3. PRODUCT SPECIFICATION: PS-40-02  
PACKAGING SPECIFICATION: CHAIN FORM: SEE PK-2759-002  
LOOSE FORM: SEE PK-2759-001
  4. DIMENSIONS GIVEN ACROSS CENTERLINES ARE SYMMETRICAL ABOUT THOSE CENTERLINES WITHIN HALF THE TOTAL TOLERANCE
  5. CRIMP FOR 22 TO 26 GA. WIRE WITH MAX. INSULATION DIA. OF (1.65)/.065
  6. THIS PRODUCT CONFORMS TO CLASS B REQUIREMENTS OF COSMETIC SPECIFICATION PS-45499-002



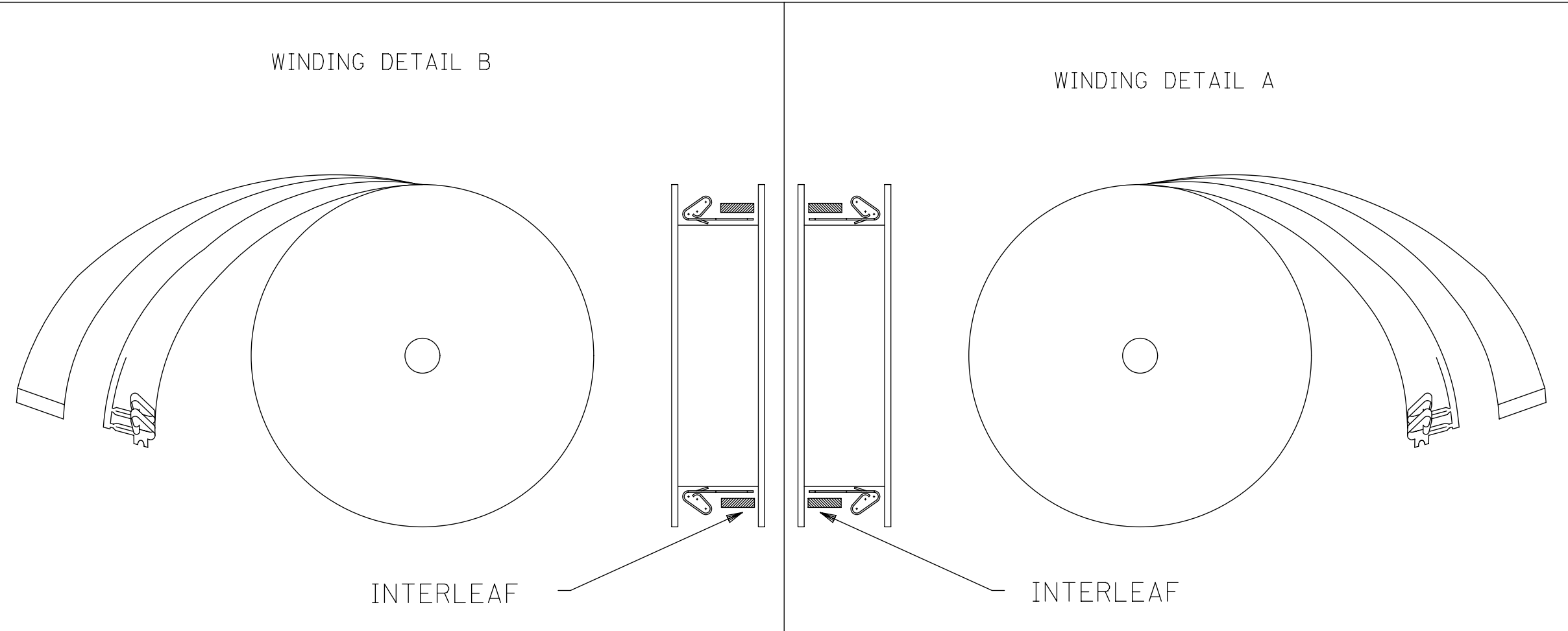
SELECTIVE PLATING AREA



7258-\*\*\*  
 MAT'L: (.27) .0106 THK  
 BLANK=BRASS  
 A=PHOS. BRONZE  
 FORM  
 BLANK= CHAIN PER DETAIL B  
 A=CHAIN PER DETAIL A  
 L= LOOSE

PLATING PER SDES- 88

- (909) - HOT TIN DIP: (0.00254)/.000100 MIN.
- (558) - SELECT GOLD: (0.00076)/.000030 MIN.  
OVERALL GOLD FLASH: (0.00005)/.000002 MIN.  
OVERALL NICKEL UNDERPLATE: (0.00127)/.000050 MIN.
- (561) - SELECT GOLD: (0.00076)/.000030 MIN.  
OVERALL NICKEL UNDERPLATE: (0.00127)/.000050 MIN.
- (555) - SELECT GOLD: (0.00038)/.000015 MIN.  
OVERALL NICKEL UNDERPLATE: (0.00076)/.000030 MIN.



SYMBOLS										THIS DRAWING CONTAINS INFORMATION THAT IS PROPRIETARY TO MOLEX ELECTRONIC TECHNOLOGIES, LLC AND SHOULD NOT BE USED WITHOUT WRITTEN PERMISSION														
DIMENSION UNITS					SCALE					CURRENT REV DESC: NOTE 3 UPDATED														
= 0					MM					1:1					EC NO: 605479 DRWN: SS06 2018/09/12 CHK'D: ISHWARG 2018/10/05 APPR: ISHWARG 2018/10/05 INITIAL REVISION: DRWN: JJS 1987/12/07 APPR: LENZ 1987/12/07 DRAFT WHERE APPLICABLE MUST REMAIN WITHIN DIMENSIONS THIRD ANGLE PROJECTION D-SIZE 7258 MATERIAL NUMBER SEE CHART CUSTOMER GENERAL MARKET SHEET NUMBER 1 OF 2									
GENERAL TOLERANCES (UNLESS SPECIFIED)																								
					MM					INCH														
4 PLACES ±					±																			
3 PLACES ±					± 0.01																			
2 PLACES ±					0.25 ± 0.014																			
1 PLACE ±					0.36 ±																			
0 PLACES ±					±																			
ANGULAR TOL ±					0.5°																			

DOCUMENT STATUS	P1	RELEASE DATE	2018/10/05	09:56:26
-----------------	----	--------------	------------	----------

7258-(*)*			7258-A(*)*														
PART NO.	ENG. NO		PART NO.	ENG. NO		PART NO.	ENG. NO		PART NO.	ENG. NO(SUFFIX ONLY)		PART NO.	ENG. NO(SUFFIX ONLY)	VOID CKT.	PART NO.	ENG. NO(SUFFIX ONLY)	VOID CKT.
08-50-0183	7258-(P909)		08-04-0001	7258-A(999)													
08-50-0185	7258-(P909)L		08-65-0121	* 7258-A(P56 I)	ES-276-P56 I												
08-50-0283	7258-(P909)A		08-65-0122	* 7258-A(P56 I)L													
			08-56-0123	* 7258-A(P558)	MAKE FROM												
			08-56-0124	* 7258-A(P558)L	7258-A(P56 I)												
				7258-A(56 I)													
				7258-A(56 I)L													
			08-52-0124	* 7258-A(P909)													
			08-52-0125	* 7258-A(P909)L													
			08-65-0126	7258-A(P555)	ES-276-P555												
			08-65-0127	7258-A(P555)L													

THIS DRAWING CONTAINS INFORMATION THAT IS PROPRIETARY TO MOLEX ELECTRONIC TECHNOLOGIES, LLC AND SHOULD NOT BE USED WITHOUT WRITTEN PERMISSION																
SYMBOLS		DIMENSION UNITS		SCALE		CURRENT REV DESC: NOTE 3 UPDATED										
▽ = 0	MM	1:1		GENERAL TOLERANCES (UNLESS SPECIFIED)												
▽ = 0	MM	INCH	EC NO: 605479													
▽ = 0	4 PLACES ±	±	DRWN: SS06 2018/09/12													
▽ = 0	3 PLACES ±	± 0.01	CHK'D: ISHWARG 2018/10/05													
▽ = 0	2 PLACES ±	0.25 ±	0.014 ±	APPR: ISHWARG 2018/10/05												
▽ = 0	1 PLACE ±	0.36 ±	INITIAL REVISION:													
▽ = 0	0 PLACES ±	±	DRWN: JJS 1987/12/07													
▽ = 0	ANGULAR TOL ±	0.5 °	APPR: LENZ 1987/12/07													
▽ = 0	DRAFT WHERE APPLICABLE MUST REMAIN WITHIN DIMENSIONS		THIRD ANGLE PROJECTION		DRAWING		SERIES		MATERIAL NUMBER			CUSTOMER			SHEET NUMBER	
▽ = 0					D-SIZE		7258		SEE CHART			GENERAL MARKET			2 OF 2	