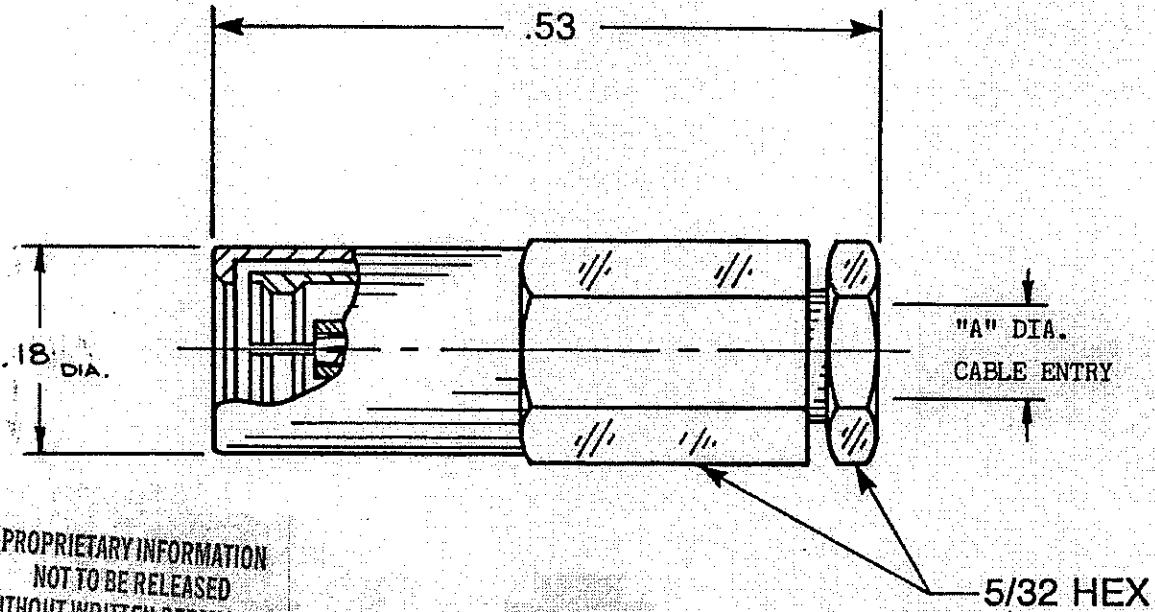


DESIGN SUBJECT TO CHANGE BY A. E. P.



PROPRIETARY INFORMATION
NOT TO BE RELEASED
WITHOUT WRITTEN PERMISSION
FROM AN AUTHORIZED
REPRESENTATIVE OF
APPLIED ENGINEERING PRODUCTS

| DASH No. | CABLE DIA. | "A" DIA. |
|----------|------------|----------|
| -010 | .085 | .089 |
| -011 | .047 | .050 |
| -021 | .056 | .060 |

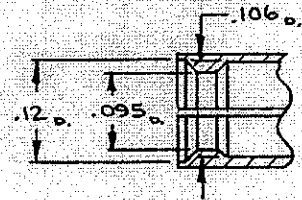
NOTES: CONFORMS TO AEP 7000 SERIES CONNECTORS

MATERIAL:

1. BODY & CONTACT = BERYLLIUM COPPER PER QQ-C-530
2. SLEEVE & BACKNUT - BRASS 1/2 HARD PER QQ-B-626, ALLOY 360
3. INSULATOR = TEFLON VIRGIN WHITE PER ASTM-D1710

FINISH:

1. CONTACT = GOLD PLATE PER MIL-G-45204, TYPE II, CLASS 1, GRADE C OVER COPPER STRIKE PER MIL-C-14550
2. BODY, SLEEVE, & BACKNUT = GOLD PLATE PER MIL-G-45204, TYPE I, CLASS 0, GRADE C OVER COPPER STRIKE PER MIL-C-14550



CONTACT FINGERS
DETAIL

BRUNING 40-5020 74046

AEP 7000 SERIES
STRAIGHT SOLDER TYPE CABLE PLUG
FOR SEMI-RIGID CABLE

APPLIED ENGINEERING PRODUCTS

CODE IDENT. 19505

7202-1542-0XX

Form 1