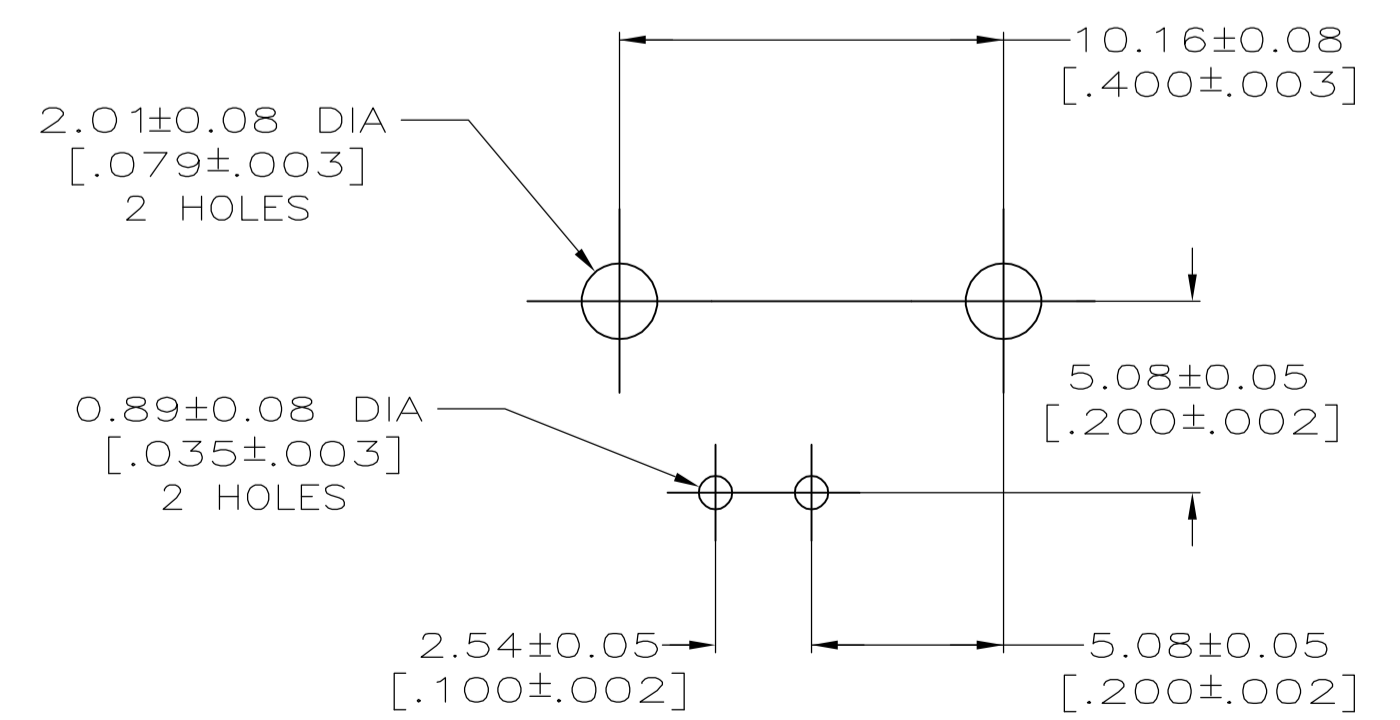
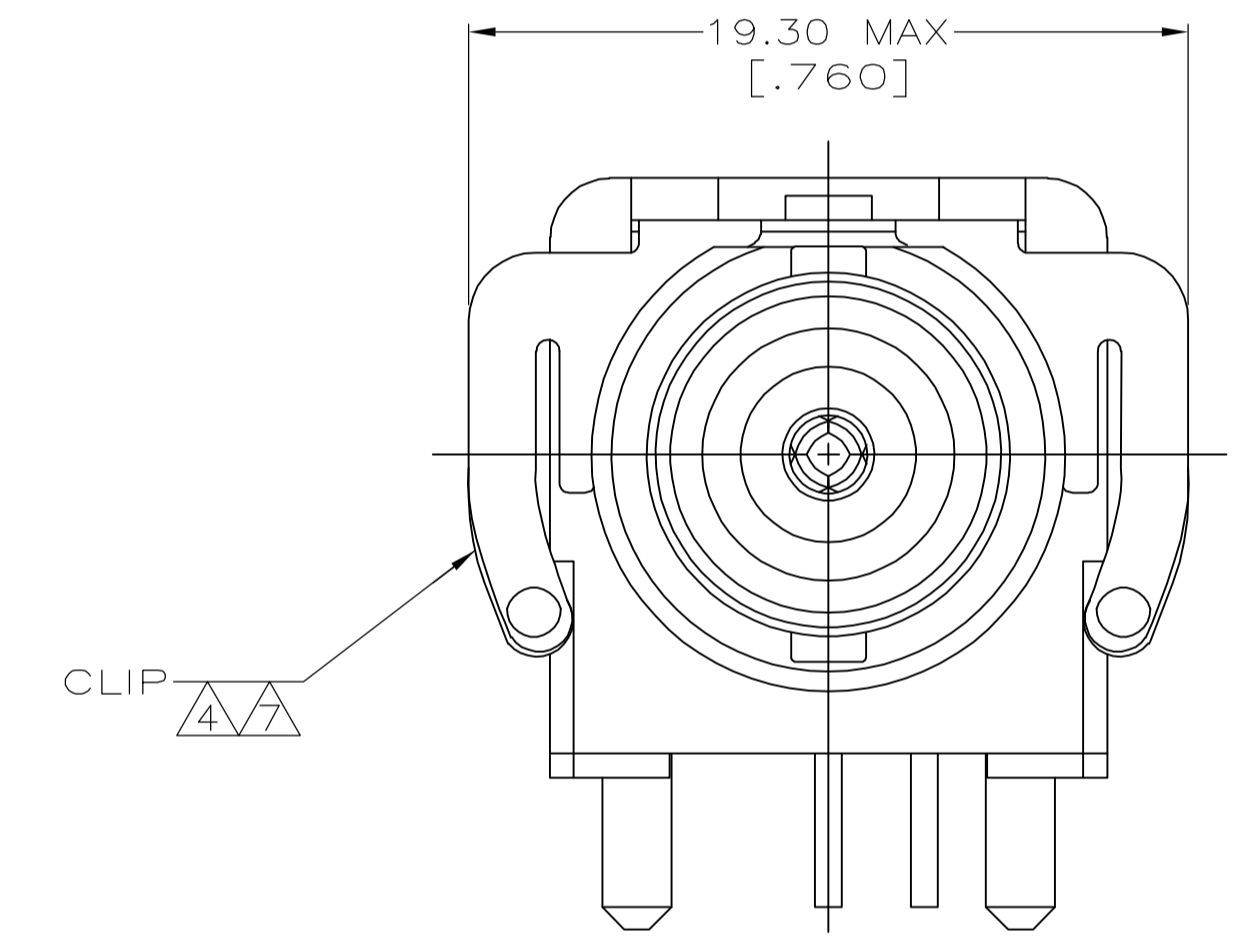
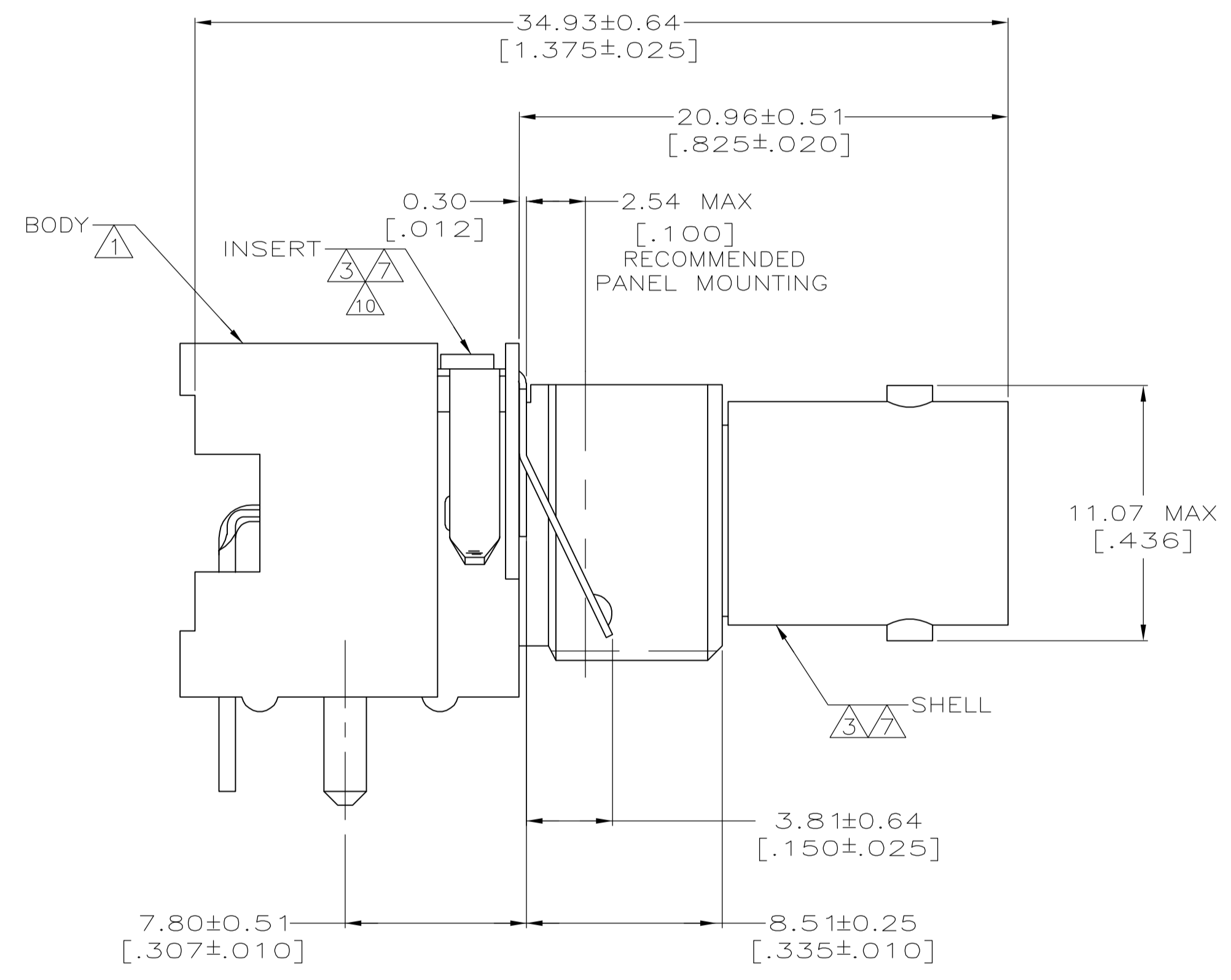
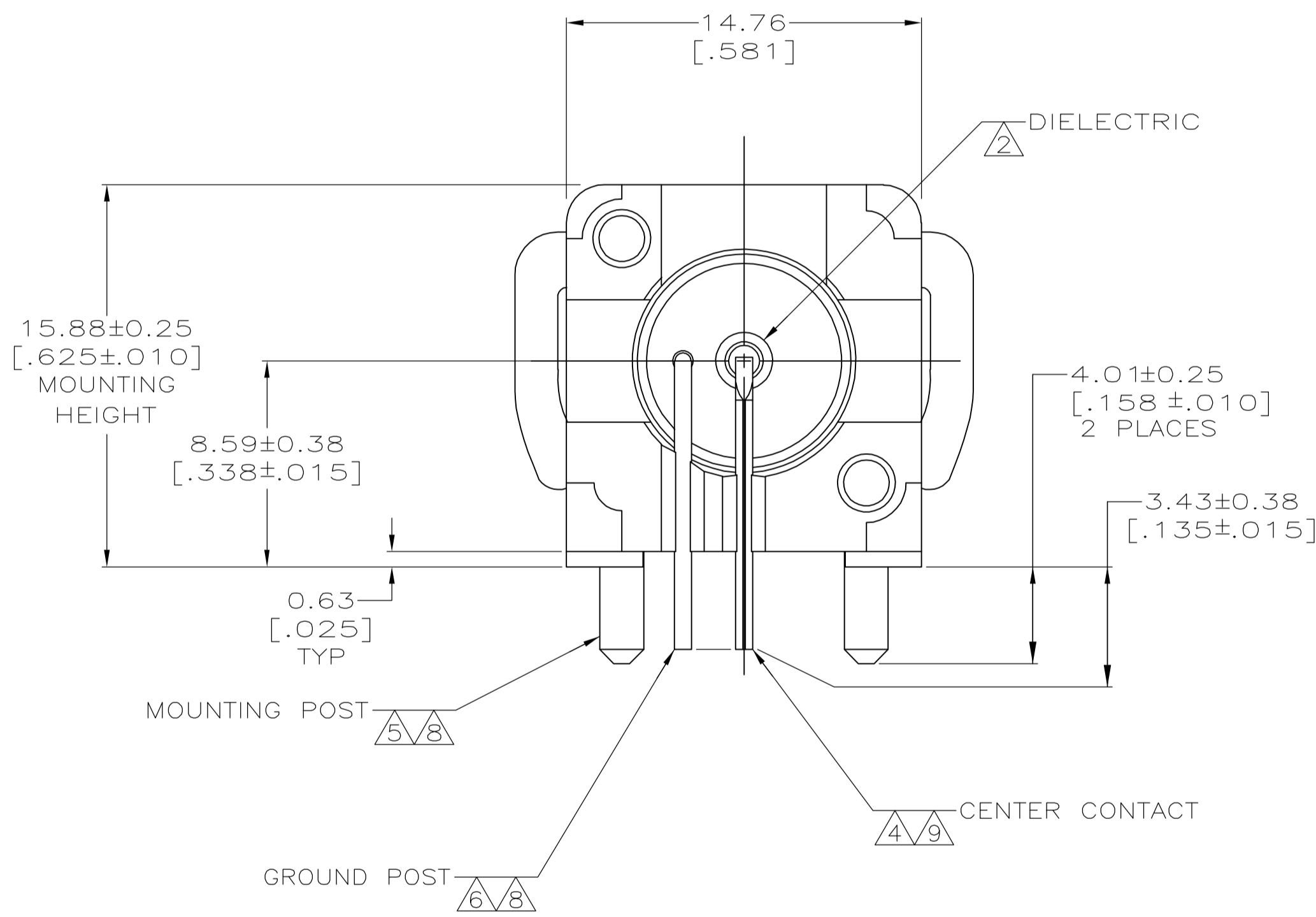
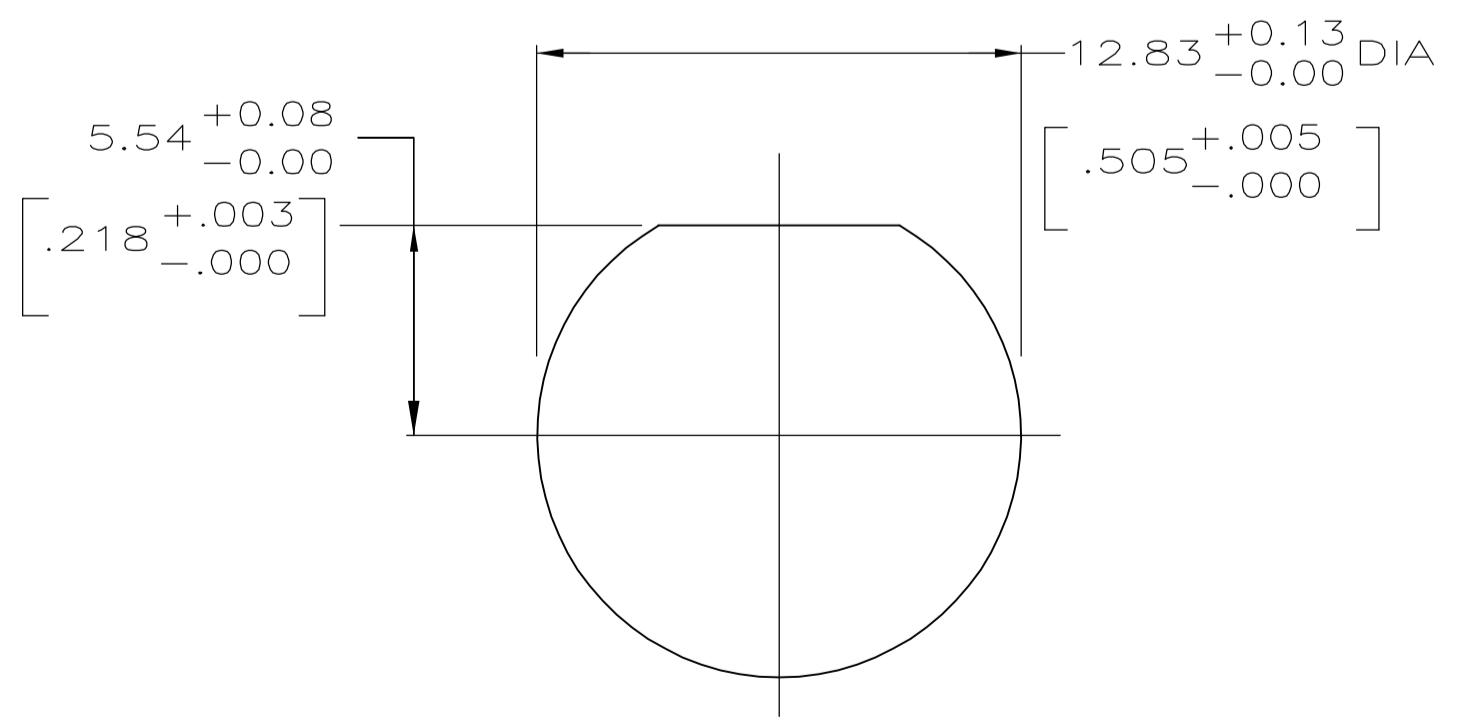


- ① POLYESTER, PBT, BLACK, PER MIL-M-24519.
- ② POLYMETHYLPENTENE GENERAL PURPOSE.
- ③ ZINC PER QQ-Z-363.
- ④ PHOSPHOR BRONZE PER QQ-B-750.
- ⑤ BRASS PER QQ-B-626.
- ⑥ BRASS PER ASTM-B-453.
- ⑦ NICKEL PL PER QQ-N-290.
- ⑧ TIN PLATE PER ASTM-B-545.
- ⑨ SELECTIVELY GOLD PLATED ON INTERFACE AREA PER ASTM-B-488, 0.76 [.000030] THICK, TIN PLATED ON SOLDER TAIL PER ASTM-B-545, ALL OVER NICKEL PLATE PER QQ-N-290.
- ⑩ ESD DEVICE, VOLTAGE BREAKDOWN <3.5KVDC.



PCB CONFIGURATION



RECOMMENDED PANEL CUTOUT

9400 pf, 1500 VDC	5415085-1
CAPACITANCE & VOLTAGE	PART NO

THIS DRAWING IS A CONTROLLED DOCUMENT.		DWN J. ALCORTA - 27APR2005	 Tyco Electronics Corporation Harrisburg, PA 17105-3608
DIMENSIONS: mm [INCHES]		CHK J. HAVENER - 27APR2005	
TOLERANCES UNLESS OTHERWISE SPECIFIED:		APP'D J. LIPPERT - 27APR2005	NAME
0 PLC ± -	1 PLC ± -	PRODUCT SPEC	JACK, DECOUPLER, PCB
2 PLC ± -	3 PLC ± 0.20 [.008]	APPLICATION SPEC	108-1269
4 PLC ± -	ANGLES ± -	SIZE	JACK, DECOUPLER, PCB
MATERIAL SEE NOTES 1 - 6	FINISH SEE NOTES 7,8,9,10	WEIGHT	RIGHT ANGLE, STANDARD, ESD PROTECTED, 75 OHM BNC
CUSTOMER DRAWING		SCALE 5:1	RESTRICTED TO
		SHEET 1 OF 1	REV A