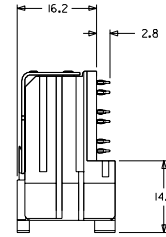
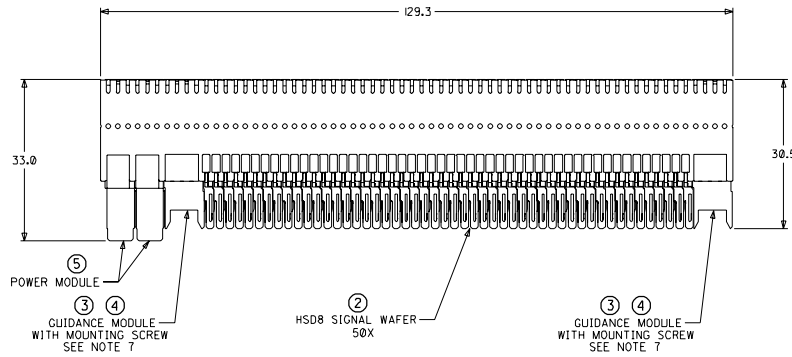
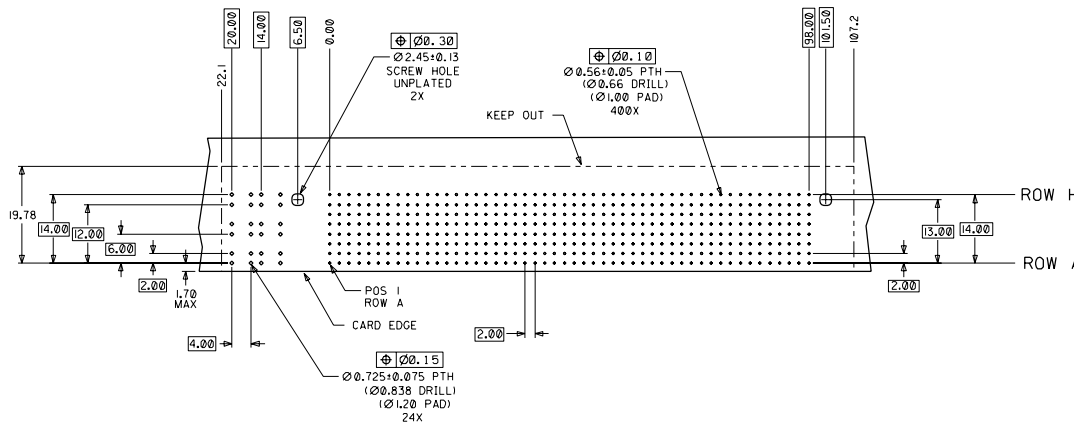
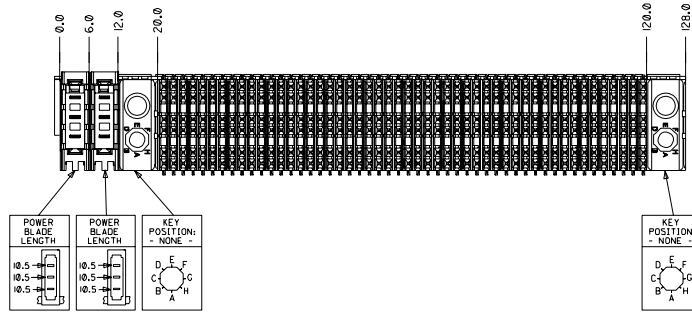


CUSTOMER: KIRANA



NOTES: (UNLESS OTHERWISE SPECIFIED)

1. MATERIALS: HOUSING - LIQUID CRYSTAL POLYMER (LCP), GLASS-FILLED, UL94V-0, BLACK. TERMINALS - HIGH PERFORMANCE COPPER ALLOY. STIFFENER - STAINLESS STEEL.
2. FINISH: SELECTIVE GOLD (Au) IN CONTACT AREA, 0.00076mm MINIMUM THICKNESS; SELECTIVE TIN/LEAD (Sn/Pb) ON PCB TAILS, NICKEL (Ni) OVERALL.
3. REFER TO MOLEX PRODUCT SPECIFICATION PS-74031-999 FOR PERFORMANCE SPECIFICATIONS.
4. REFER TO MOLEX DOCUMENT SD-74681-002 FOR ADDITIONAL DETAIL ON THE HSD8 SIGNAL WAFER.
5. REFER TO MOLEX DOCUMENT SD-74037-006 FOR ADDITIONAL DETAIL ON THE GUIDANCE MODULE.
6. REFER TO MOLEX DOCUMENT SD-74026-002 FOR ADDITIONAL DETAIL ON THE POWER MODULE.
7. MOUNTING SCREWS WILL BE BAGGED WITH EACH CONNECTOR.
8. PARTS ARE PACKAGED IN TUBES PER PK-70873-5041.



DAUGHTERCARD HOLE PATTERN (CONNECTOR SIDE)

ITEM	PART NUMBER	DESCRIPTION	QTY
1	74046-0129	STIFFENER	1
2	74681-0001	HSD8 SIGNAL WAFER	50
3	74037-0008	POLARIZING/GUIDE MODULE	2
4	73726-0000	GUIDE MODULE MNTG SCREW	2
5	74026-8333	POWER MODULE	2

INITIAL RELEASE EC NO. UDT2002-06 (9) DRAWN: ATP 01/10/17 CHECK: LAURX 01/10/17 APPR: BIXLER 01/10/17 REV: A	QUALITY SYMBOLS MAJOR: 0 CRITICAL: 0	GENERAL TOLERANCES (UNLESS SPECIFIED) 4 PLACES ±0. -- 2. -- 3 PLACES ±0. -- 2. -- 2 PLACES ±0. -- 2. -- 1 PLACE ±0. -- 2. -- ANGULAR: ± 2°	SCALE: 2:1 DESIGN UNITS: mm () INCH () DRAWN BY & DATE: ATP 01/10/17 CHECKED BY & DATE: LAURX 01/10/17 APPROVED BY & DATE: BIXLER 01/10/17	DIMENSIONS: mm () INCH () THIRD ANGLE PROJECTION SHT: REV:	TITLE: 8 ROW HSD DAUGHTERCARD ASSEMBLY SALES DRAWING	MATERIAL NO. SD-74680-074 DRAWING NO. SD-74680-074 SHEET NO. 1 OF 1	
		CAD FILENAME: SD-74680-074			MOLEX INCORPORATED		
		DRAFT WHERE APPLICABLE MUST REMAIN WITHIN DIMENSIONS			THIS DRAWING CONTAINS INFORMATION THAT IS PROPRIETARY TO MOLEX INCORPORATED AND SHOULD NOT BE USED WITHOUT WRITTEN PERMISSION.		
					SIZE D		