

| PART NUMBER | REVISION | DESCRIPTION                      | FEED TYPE  |
|-------------|----------|----------------------------------|------------|
| 2266092-1   | D        | FINE CRIMP HEIGHT ADJUST         | MECHANICAL |
| 2266092-2   | D        | FINE CRIMP HEIGHT ADJUST         | PNEUMATIC  |
| 7-2266092-1 | D        | MECHANICAL AND CRIMP TOOLING KIT | MECHANICAL |
| 7-2266092-2 | D        | PNEUMATIC AND CRIMP TOOLING KIT  | PNEUMATIC  |
| 7-2266092-7 | A        | CRIMP TOOLING KIT                | -          |

ATLANTIC VERSION TERMINATOR INTERFACE ADAPTER

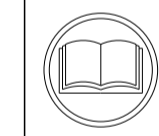


| APPLICATOR DATA |                |      |
|-----------------|----------------|------|
| CRIMP           | SIZE           | TYPE |
| WIRE            | 2.59 mm [.102] | F    |
| INSUL           | 2.60 mm [.102] | F    |

APPLICATOR INSTRUCTIONS 408-35042

| TERMINAL DATA: ITT CANNON TERMINAL ITT CRIMP SPECIFICATION |                              |             |                     |
|--|------------------------------|-------------|---------------------|
| TERMINAL NAME: CONTACT TRIDENT RECEPTACLE P/N              |                              |             |                     |
| WIRE STRIP LENGTH  | INSULATION DIAMETER RANGE    |             |                     |
| 4.20-4.80 mm [.165-.189 IN]                                | Ø1.90-2.50 mm [.075-.098 IN] |             |                     |
| TERMINAL APPLICATION SPECIFICATION                         | ITT SPEC                     |             |                     |
|  |                              |             |                     |
| TERMINALS APPLIED  |                              |             |                     |
| TE TERMINAL  | ITT CANNON TERMINAL          | TE TERMINAL | ITT CANNON TERMINAL |
| 286874-1   | 192990-2530                  | 1572991-1   | 192990-2490         |
| 286874-2   | 192990-2670                  | 1572991-2   | 192990-2630         |
| 286874-3   | 192900-0408                  | 1572991-3   | 192900-0404         |
| 286874-4   | 192900-0001                  | 2345187-1   | 192900-0000         |

| WIRE SIZE         | CRIMP HEIGHT mm [INCH]        | CRIMP HEIGHT REFERENCE SETTING |
|-------------------|-------------------------------|--------------------------------|
| 16 AWG OR 1.50mm2 | 1.45 +/- 0.03 [.057 +/- .001] | 3.1                            |
| 17 AWG OR 1.00mm2 | 1.32 +/- 0.03 [.052 +/- .001] | 4.5                            |
| 18 AWG OR 0.75mm2 | 1.22 +/- 0.03 [.048 +/- .001] | 5.7                            |



- 1. RECOMMENDED SPARE PARTS
- 2. REFER TO SUPPLIED INSTRUCTION SHEET FOR CLEANING, LUBRICATION AND STORAGE OF APPLICATOR.
- 3. APPLY PART NUMBER 2-23419-6 LOCTITE TO THREADS OF ITEM 242.
- 4. CRIMP HEIGHT REFERENCE SETTING WAS THE SETTING USED WHEN THE APPLICATOR WAS QUALIFIED AT THE FACTORY. ADJUSTMENT MAY BE NECESSARY WHEN RUNNING APPLICATOR IN THE FIELD.
- 5. UNLESS SPECIFIED OTHERWISE TORQUE VALUES SHALL BE USED PER DOCUMENT, 101-35000.

**\*WARNING**  
ON INSTALLATION, SET WIRE DISC TO CRIMP HEIGHT REFERENCE SETTING FOR LARGEST WIRE SIZE. CRIMP HEIGHT REFERENCE SETTINGS GREATER THAN THE VALUE SHOWN MAY CAUSE DAMAGE TO THE CRIMP TOOLING. REFER TO THE INSTRUCTION SHEET FOR PROPER SETUP AND ADJUSTMENTS.

**ATLANTIC VERSION**  
Shown on sheets 1 of 4 & 2 of 4  
(Pacific version shown on sheets 3 of 4 & 4 of 4)

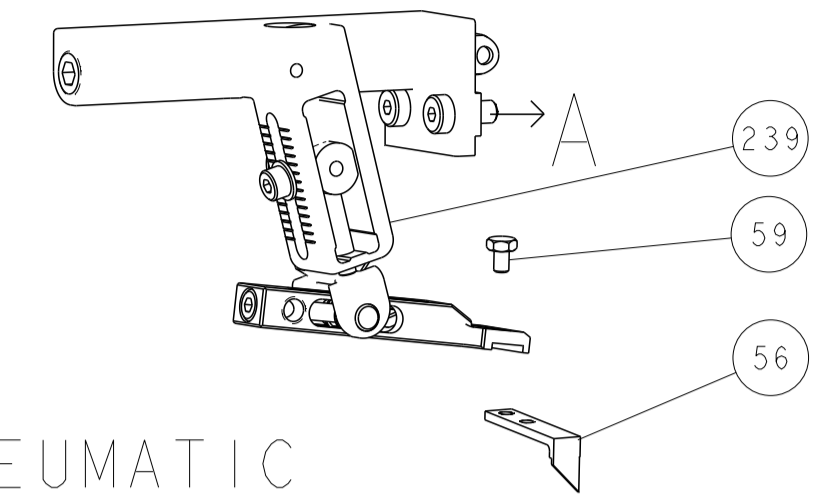
| LOC | DIST | REVISIONS |     |               |           |     |      |
|-----|------|-----------|-----|---------------|-----------|-----|------|
| A   | 66   | P         | LTN | DESCRIPTION   | DATE      | OWN | APVD |
|     |      | A1        |     | ECR-16-007327 | 23MAY2016 | RS  | LZ   |
|     |      | B         |     | ECR-18-008541 | 04JUN2018 | MEH | TE   |
|     |      | C         |     | ECR-19-000137 | 04JAN2019 | TB  | TE   |
|     |      | D         |     | ECR-23-171875 | 11APR2023 | FZ  | JAH  |

|   |     |     |     |     |             |                                     |                               |   |
|---|-----|-----|-----|-----|-------------|-------------------------------------|-------------------------------|---|
| - | 1   | -   | 1   | -   | 2119641-1   | FEED CAM, AIR FEED                  | 248                           |   |
| - | 1   | 1   | 1   | 1   | 2119082-9   | CAM, SNAIL, INSULATION ADJUSTMENT   | 244                           |   |
| - | 1   | 1   | 1   | 1   | 2079764-1   | WASHER, WAVE SPRING, CREST-TO-CREST | 243                           |   |
| - | 1   | 1   | 1   | 1   | 2119083-1   | RETAINER, INSULATION DIAL           | 242                           |   |
| - | 1   | 1   | 1   | 1   | 7-18023-7   | SCR, SKT HD CAP M3 X 4.0            | 241                           |   |
| - | -   | 1   | -   | 1   | 2119580-1   | MECHANICAL FEED ASSEMBLY            | 239                           |   |
| - | 1   | -   | 1   | -   | 2844940-1   | AIR FEED MODULE                     | 238                           |   |
| - | REF | REF | REF | REF | 994970-2    | COUNTER, MAGNETIC                   | 164                           |   |
| - | 1   | 1   | 1   | 1   | 2844908-1   | SCREW, LOCKING                      | 99                            |   |
| - | 1   | 1   | 1   | 1   | 2844907-1   | POST, LOCKING                       | 98                            |   |
| - | 1   | 1   | 1   | 1   | 455888-5    | SPACER, CRIMPER                     | 82                            |   |
| - | 1   | 1   | 1   | 1   | 5-547505-2  | SPRING, COMPRESSION                 | 77                            |   |
| - | 1   | 1   | 1   | 1   | 854769-4    | HOLDER, INS                         | 74                            |   |
| - | 1   | 1   | 1   | 1   | 1803607-3   | DOCUMENTATION PACKAGE               | 71                            |   |
| - | 1   | 1   | 1   | 1   | 2119740-1   | TAG, IDENTIFICATION                 | 67                            |   |
| - | 2   | 2   | 2   | 2   | 2168078-1   | SCREW, DRIVE, RH, RoHS, 2 x .188    | 66                            |   |
| - | 1   | 1   | 1   | 1   | 2168083-2   | SCR, SKT HD CAP, RoHS, M4 X 8.0     | 60                            |   |
| - | 1   | 1   | 1   | 1   | 5-18022-5   | SCR, HEX HD CAP, M4 X 6.0           | 59                            |   |
| - | 1   | 1   | 1   | 1   | 21028-2     | PIN, SLOTTED SPRING .062 X .250     | 58                            |   |
| - | 1   | 1   | 1   | 1   | 1338685-1   | PAWL, FEED                          | 56                            |   |
| - | 4   | 4   | 4   | 4   | 2168083-3   | SCR, SKT HD CAP, RoHS, M4 X 12.0    | 54                            |   |
| - | 2   | 2   | 2   | 2   | 2-2168083-6 | SCR, SKT HD CAP, RoHS, M4 X 18      | 53                            |   |
| - | 1   | 1   | 1   | 1   | 5018030-1   | NUT, HEX, REG, RoHS, M3             | 52                            |   |
| - | 1   | 1   | 1   | 1   | 811242-5    | BUMPER, HOLD DOWN                   | 51                            |   |
| - | 1   | 1   | 1   | 1   | 690753-2    | SPACER, TONKER                      | 50                            |   |
| - | 1   | 2   | 1   | 2   | 18023-9     | SCR, SKT HD CAP M4 X 6.0            | 49                            |   |
| - | -   | 1   | -   | 1   | 2119652-1   | FEED CAM, PRE FEED                  | 48                            |   |
| - | -   | 1   | -   | 1   | 2119653-1   | FEED CAM, POST FEED                 | 47                            |   |
| - | 1   | 1   | 1   | 1   | 1803583-9   | APPLICATOR BASIC ASSEMBLY, SF       | 46                            |   |
| - | 1   | 1   | 1   | 1   | 1803515-1   | RAM ASSEMBLY, SF ATLANTIC           | 44                            |   |
| - | 1   | 1   | 1   | 1   | 1803602-1   | SCR, BHSC, RoHS (M8 X 25)           | 41                            |   |
| - | 1   | 1   | 1   | 1   | 1752356-6   | SUPPORT, TERMINAL                   | 34                            |   |
| - | 2   | 2   | 2   | 2   | 2079383-5   | SCR, BHSC, RoHS (M4 X 20)           | 33                            |   |
| - | 2   | 2   | 2   | 2   | 2-2844962-8 | SPACER, CYLINDRICAL, STRIP GUIDE    | 30                            |   |
| - | 1   | 1   | 1   | 1   | 2844992-1   | ASSEMBLY, STRIP GUIDE               | 29                            |   |
| - | 1   | 1   | 1   | 1   | 1-455888-0  | SPACER, CRIMPER                     | 28                            |   |
| - | 1   | 1   | 1   | 1   | 1320928-6   | STRIP GUIDE                         | 24                            |   |
| - | 1   | 1   | 1   | 1   | 2168083-2   | SCR, SKT HD CAP, RoHS, M4 X 8.0     | 21                            |   |
| - | 2   | 2   | 2   | 2   | 1-18028-2   | WASHER, FLAT, REG M4                | 20                            |   |
| - | 1   | 1   | 1   | 1   | 2119533-1   | STRIPPER, SIDE FEED                 | 19                            |   |
| - | 1   | 1   | 1   | 1   | 2119806-1   | INSERT, SHEAR                       | 13                            |   |
| - | 1   | 1   | 1   | 1   | 3-22280-3   | SPRING, COMPRESSION                 | 12                            |   |
| - | 1   | 1   | 1   | 1   | 1-356885-4  | STOP, SHEAR                         | 11                            |   |
| - | 1   | 1   | 1   | 1   | 2119805-1   | SHEAR HOLDER, FRONT                 | 10                            |   |
| - | 1   | 1   | 1   | 1   | 1803095-1   | FLOATING SHEAR, FRONT               | 9                             |   |
| - | 1   | 2   | 2   | 1   | 1           | 6-1633927-5                         | ANVIL, COMBINATION            | 8 |
| - | 1   | 1   | 1   | 1   | 2-240641-3  | SPACER                              | 7                             |   |
| - | -   | -   | -   | -   | -           | -                                   | 6                             |   |
| - | 1   | 1   | 1   | 1   | 2119780-9   | DEPRESSOR, SHEAR                    | 5                             |   |
| - | 1   | 1   | 1   | 1   | 238011-7    | BLOCK, CRIMPER SPACER               | 4                             |   |
| - | 1   | 2   | 2   | 1   | 1           | 1633961-8                           | CRIMPER, INSULATION F PREMIUM | 3 |
| - | 1   | 1   | 1   | 1   | 455888-3    | SPACER, CRIMPER                     | 2                             |   |
| - | 1   | 2   | 2   | 1   | 1           | 1633588-6                           | CRIMPER, WIRE                 | 1 |
| - | 77  | -72 | -71 | -2  | -1          | PART NO                             | ITEM NO                       |   |

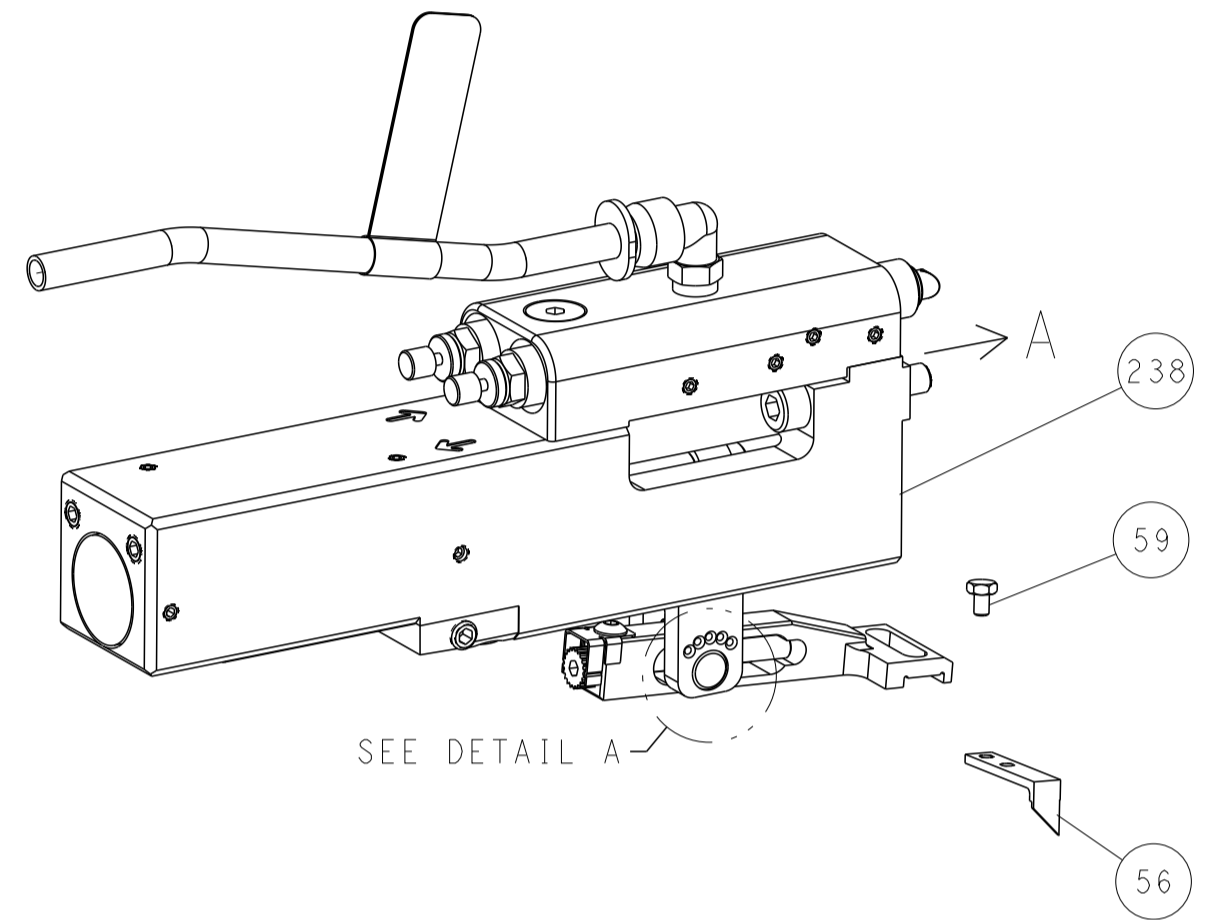
|   |  |   |   |
|---|--|---|---|
| <small>THIS DRAWING IS UNPUBLISHED. IT IS THE PROPERTY OF TYCO ELECTRONICS CORPORATION. IT IS TO BE KEPT IN CONFIDENTIALITY AND NOT TO BE REPRODUCED OR TRANSMITTED IN ANY FORM OR BY ANY MEANS, ELECTRONIC OR MECHANICAL, INCLUDING PHOTOCOPYING, RECORDING, OR BY ANY INFORMATION STORAGE AND RETRIEVAL SYSTEM. PERMISSION TO COPY OR REPRODUCE THIS DRAWING IN ANY MANNER IS GRANTED BY TYCO ELECTRONICS CORPORATION ONLY IF CONTACTED FOR THE LATEST VERSION.</small> |  | DWN<br>Y. YIN<br>29OCT2013<br>CHK<br>G. BAILEY<br>29OCT2013<br>APVD<br>J. GUO<br>29OCT2013                            | TE Connectivity<br>Harrisburg, PA 17105-3608  |
| DIMENSIONS:<br>mm<br>   |  | TOLERANCES UNLESS OTHERWISE SPECIFIED:<br>0 PLC ±<br>1 PLC ±<br>2 PLC ±<br>3 PLC ±<br>4 PLC ±<br>ANGLES ±<br>FINISH ± | NAME<br>Ocean Side Feed<br>Applicator<br>SIZE CAGE CODE DRAWING NO RESTRICTED TO<br>A1 00779 C=2266092 -<br>Customer Accessible Production Drawing SCALE 1:2 SHEET 1 OF 4 REV D |

| LOC | DIST | REVISIONS |     |             |      |     |      |
|-----|------|-----------|-----|-------------|------|-----|------|
|     |      | P         | LTN | DESCRIPTION | DATE | DWN | APVD |
| A   | 66   | -         | -   | SEE SHEET 1 | -    | -   | -    |

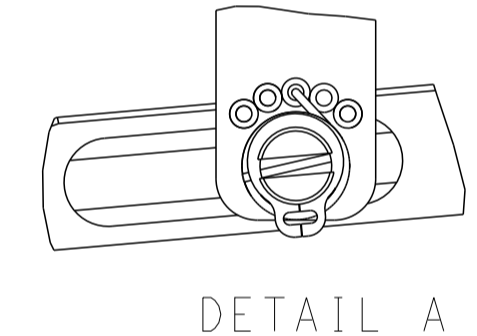
# FEED TYPE MECHANICAL



## PNEUMATIC

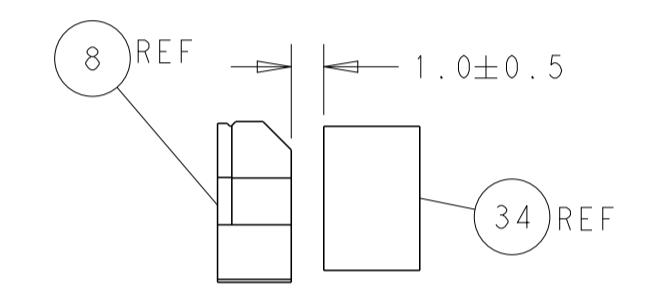
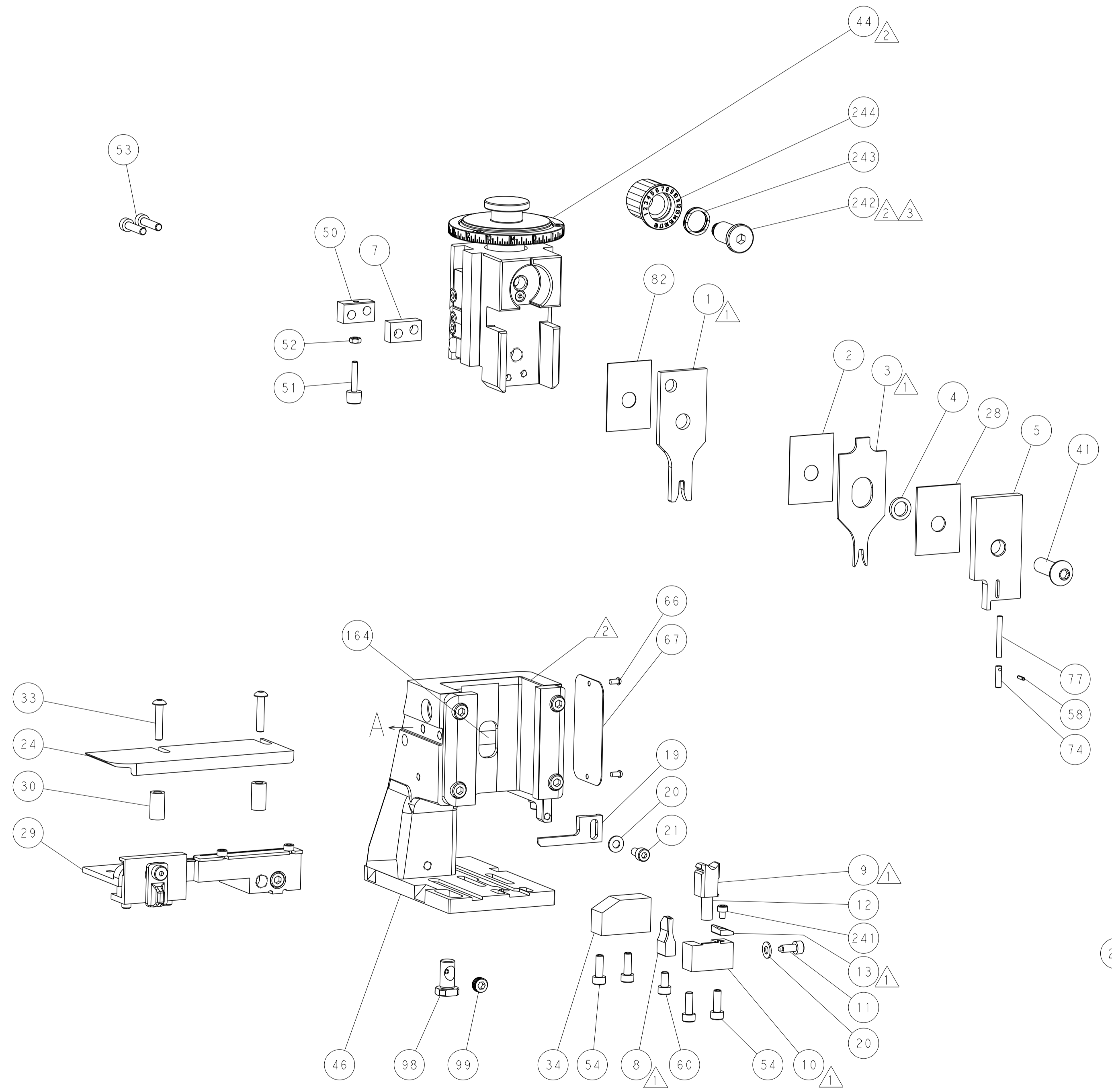
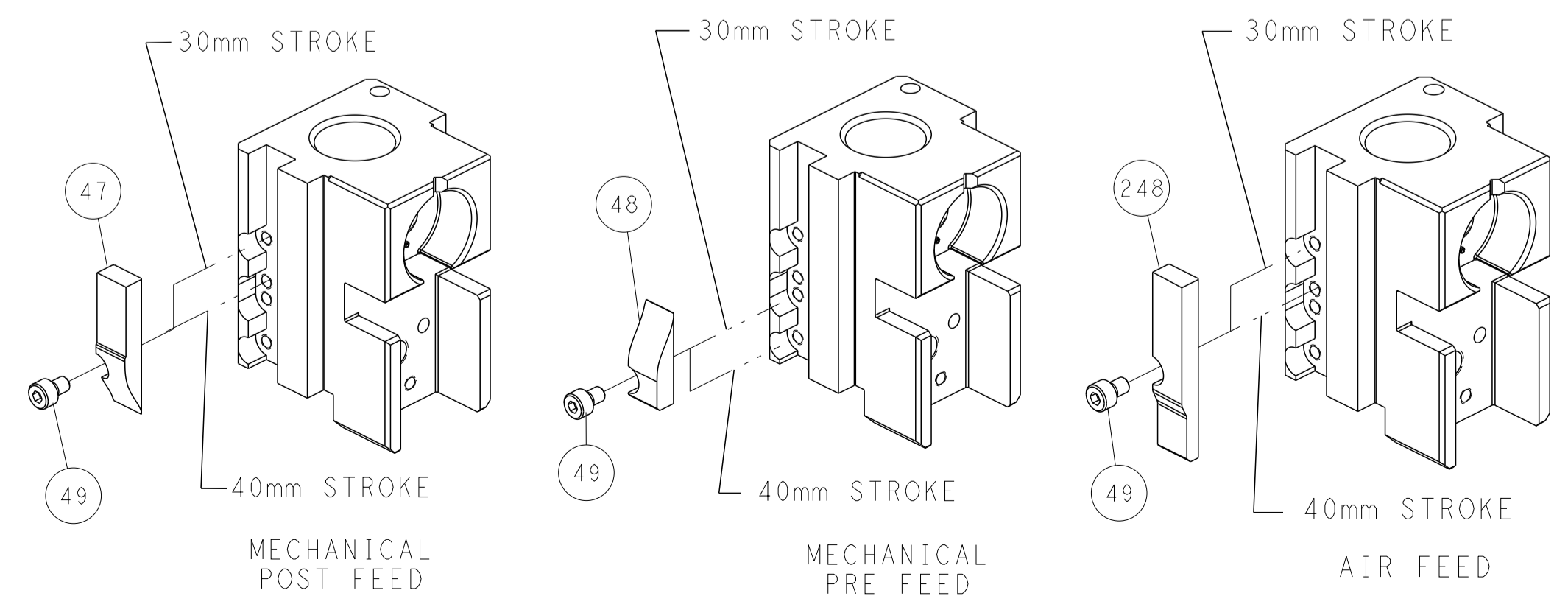


## FEED SPRING SETTING POSITION (SHOWN FROM REAR SIDE)

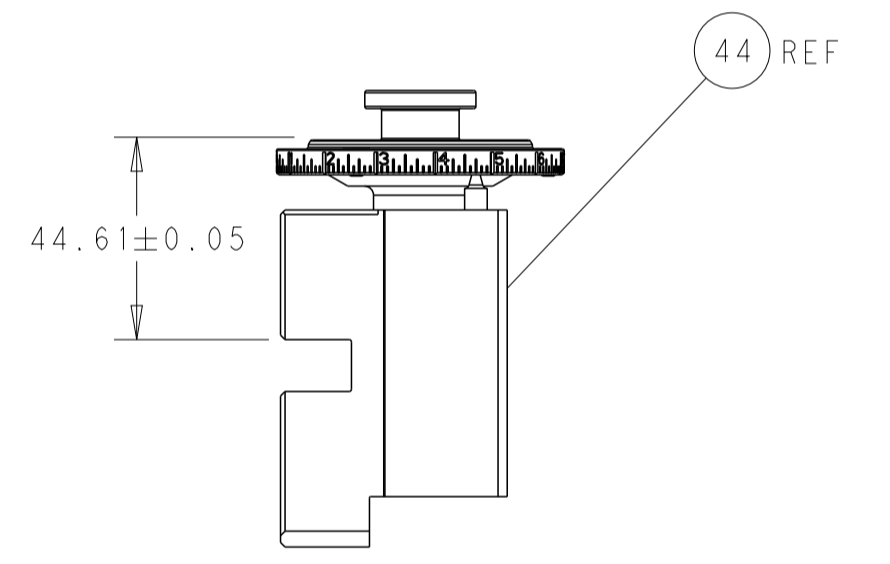


DETAIL A

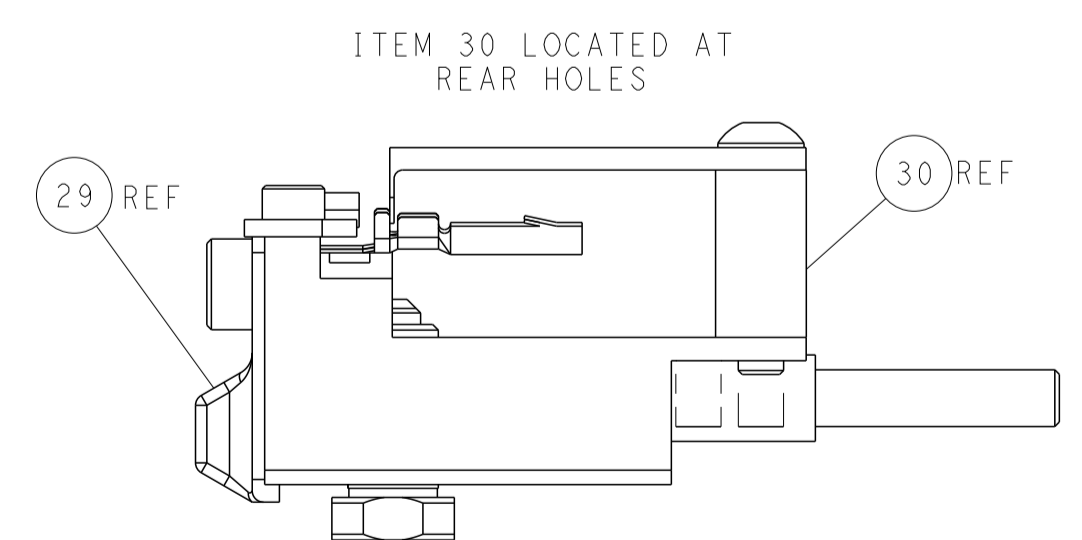
# CAM POSITIONS



TERMINAL SUPPORT LOCATION



RAM SET-UP



FEED TRACK POSITION GUIDE BY INSULATION BARREL

**ATLANTIC VERSION**  
 Shown on sheets 1 of 4 & 2 of 4  
 (Pacific version shown on sheets 3 of 4 & 4 of 4)

|  |   |   |   |  |
|--|---|---|---|--|
| <small>THIS DRAWING IS UNPUBLISHED. RELEASED FOR PUBLICATION BY TYCO ELECTRONICS CORPORATION. ALL RIGHTS RESERVED.</small>       |   | DWN: Y. YIN 29OCT2013<br>CHK: G. BAILEY 29OCT2013<br>APVD: H. GUO 29OCT2013 | NAME: Ocean Side Feed Applicator<br>SIZE: A1<br>CAGE CODE: 00779<br>DRAWING NO: 2266092 | TE Connectivity<br>Harrisburg, PA 17105-3608 |
| DIMENSIONS: mm<br>TOLERANCES UNLESS OTHERWISE SPECIFIED:<br>0 PLC ±<br>1 PLC ±<br>2 PLC ±<br>3 PLC ±<br>4 PLC ±<br>ANGLES FINISH | TOLERANCES UNLESS OTHERWISE SPECIFIED:<br>±<br>±<br>±<br>±<br>± | PRODUCT SPEC<br>APPLICATION SPEC<br>WEIGHT<br>SCALE: 1:2                    | SHEET 2 OF 4<br>REV D<br>RESTRICTED TO  | Customer Accessible Production Drawing       |

| PART NUMBER | REVISION | DESCRIPTION              | FEED TYPE  |
|-------------|----------|--------------------------|------------|
| 2-2266092-1 | D        | FINE CRIMP HEIGHT ADJUST | MECHANICAL |
| 2-2266092-2 | D        | FINE CRIMP HEIGHT ADJUST | PNEUMATIC  |
| 7-2266092-7 | A        | CRIMP TOOLING KIT        | -          |

PACIFIC VERSION TERMINATOR  
INTERFACE ADAPTER



| APPLICATOR DATA |                  |      |
|-----------------|------------------|------|
| CRIMP           | SIZE             | TYPE |
| WIRE            | 2.59 mm [ .102 ] | F    |
| INSUL           | 2.60 mm [ .102 ] | F    |

APPLICATOR INSTRUCTIONS  
408-35042

|  |                     |                                |                     |
|--|---------------------|--------------------------------|---------------------|
| TERMINAL DATA: ITT CANNON TERMINAL ITT CRIMP SPECIFICATION |                     |                                |                     |
| TERMINAL NAME: CONTACT TRIDENT RECEPTACLE P/N              |                     |                                |                     |
| WIRE STRIP LENGTH  |                     | INSULATION DIAMETER RANGE      |                     |
| 4.20-4.80 mm [ 1.65-.189 IN ]                              |                     | Ø1.90-2.50 mm [ .075-.098 IN ] |                     |
| TERMINAL APPLICATION SPECIFICATION                         | ITT SPEC            | -                              | -                   |
| TERMINALS APPLIED  |                     |                                |                     |
| TE TERMINAL  | ITT CANNON TERMINAL | TE TERMINAL                    | ITT CANNON TERMINAL |
| 286874-1   | 192990-2530         | 1572991-1                      | 192990-2490         |
| 286874-2   | 192990-2670         | 1572991-2                      | 192990-2630         |
| 286874-3   | 192900-0408         | 1572991-3                      | 192900-0404         |
| 286874-4   | 192900-0001         | 2345187-1                      | 192900-0000         |

| WIRE SIZE                     | CRIMP HEIGHT mm [ INCH ]        | CRIMP HEIGHT REFERENCE SETTING |
|-------------------------------|---------------------------------|--------------------------------|
| 16 AWG OR 1.50mm <sup>2</sup> | 1.45 +/- 0.03 [ .057 +/- .001 ] | 3.1                            |
| 17 AWG OR 1.00mm <sup>2</sup> | 1.32 +/- 0.03 [ .052 +/- .001 ] | 4.5                            |
| 18 AWG OR 0.75mm <sup>2</sup> | 1.22 +/- 0.03 [ .048 +/- .001 ] | 5.7                            |



- 1 RECOMMENDED SPARE PARTS
  - 2 REFER TO SUPPLIED INSTRUCTION SHEET FOR CLEANING, LUBRICATION AND STORAGE OF APPLICATOR.
  - 3 APPLY PART NUMBER 2-23419-6 LOCTITE TO THREADS OF ITEM 242.
  - 4 CRIMP HEIGHT REFERENCE SETTING WAS THE SETTING USED WHEN THE APPLICATOR WAS QUALIFIED AT THE FACTORY. ADJUSTMENT MAY BE NECESSARY WHEN RUNNING APPLICATOR IN THE FIELD.
5. UNLESS SPECIFIED OTHERWISE TORQUE VALUES SHALL BE USED PER DOCUMENT, 101-35000.

**\*WARNING**  
ON INSTALLATION, SET WIRE DISC TO CRIMP HEIGHT REFERENCE SETTING FOR LARGEST WIRE SIZE. CRIMP HEIGHT REFERENCE SETTINGS GREATER THAN THE VALUE SHOWN MAY CAUSE DAMAGE TO THE CRIMP TOOLING, REFER TO THE INSTRUCTION SHEET FOR PROPER SETUP AND ADJUSTMENTS.

PACIFIC VERSION  
Shown on sheets 3 of 4 & 4 of 4  
(Atlantic version shown on sheets 1 of 4 & 2 of 4)

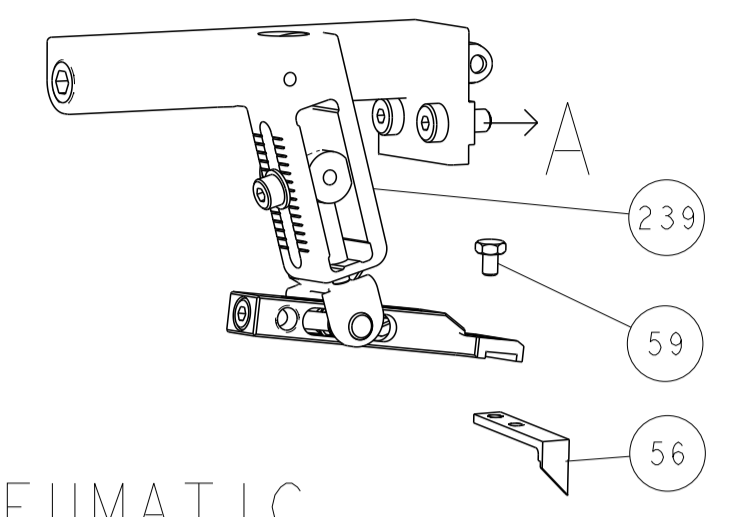
| LOC | DIST | REV | DATE | BY | APPV |
|-----|------|-----|------|----|------|
| A   | 66   | -   | -    | -  | -    |

| REV | DATE | BY  | APPV | DESCRIPTION                                   | ITEM NO |
|-----|------|-----|------|---|---------|
| -   | 1    | 1   |      | 2119082-9 CAM, SNAIL, INSULATION ADJUSTMENT   | 244     |
| -   | 1    | 1   |      | 2079764-1 WASHER, WAVE SPRING, CREST-TO-CREST | 243     |
| -   | 1    | 1   |      | 2119083-1 RETAINER, INSULATION DIAL           | 242     |
| -   | 1    | 1   |      | 7-18023-7 SCR, SKT HD CAP M3 X 4.0            | 241     |
| -   | -    | 1   |      | 2119580-1 MECHANICAL FEED ASSEMBLY            | 239     |
| -   | 1    | -   |      | 2844940-1 AIR FEED MODULE                     | 238     |
| -   | REF  | REF |      | 994970-2 COUNTER, MAGNETIC                    | 164     |
| -   | 1    | -   |      | 2119641-2 FEED CAM, AIR FEED                  | 151     |
| -   | 1    | 1   |      | 2168083-8 SCR, SKT HD CAP, RoHS, M4 X 16      | 144     |
| -   | 4    | 4   |      | 2168083-9 SCR, SKT HD CAP, RoHS, M4 X 20      | 143     |
| -   | -    | 1   |      | 2119653-2 FEED CAM, POST FEED                 | 142     |
| -   | 1    | 1   |      | 1-1803583-0 APPLICATOR BASIC ASSEMBLY, SF     | 141     |
| -   | 1    | 1   |      | 1803516-1 RAM ASSEMBLY, SF PACIFIC            | 140     |
| -   | 1    | 1   |      | 2844908-1 SCREW, LOCKING                      | 99      |
| -   | 1    | 1   |      | 2844907-1 POST, LOCKING                       | 98      |
| -   | 1    | 1   |      | 455888-5 SPACER, CRIMPER                      | 82      |
| -   | 1    | 1   |      | 5-547505-2 SPRING, COMPRESSION                | 77      |
| -   | 1    | 1   |      | 854769-4 HOLDER, INS                          | 74      |
| -   | 1    | 1   |      | 1803607-3 DOCUMENTATION PACKAGE               | 71      |
| -   | 1    | 1   |      | 2119740-1 TAG, IDENTIFICATION                 | 67      |
| -   | 2    | 2   |      | 2168078-1 SCREW, DRIVE, RH, RoHS, 2 x .188    | 66      |
| -   | 1    | 1   |      | 5-18022-5 SCR, HEX HD CAP, M4 X 6.0           | 59      |
| -   | 1    | 1   |      | 21028-2 PIN, SLOTTED SPRING .062 X .250       | 58      |
| -   | 1    | 1   |      | 1338685-1 PAWL, FEED                          | 56      |
| -   | 2    | 2   |      | 2-2168083-6 SCR, SKT HD CAP, RoHS, M4 X 18    | 53      |
| -   | 1    | 1   |      | 5018030-1 NUT, HEX, REG, RoHS, M3             | 52      |
| -   | 1    | 1   |      | 811242-5 BUMPER, HOLD DOWN                    | 51      |
| -   | 1    | 1   |      | 690753-2 SPACER, TONKER                       | 50      |
| -   | 1    | 2   |      | 18023-9 SCR, SKT HD CAP M4 X 6.0              | 49      |
| -   | -    | 1   |      | 2119652-1 FEED CAM, PRE FEED                  | 48      |
| -   | 1    | 1   |      | 1803602-1 SCR, BHSC, RoHS (M8 X 25)           | 41      |
| -   | 1    | 1   |      | 1752356-6 SUPPORT, TERMINAL                   | 34      |
| -   | 2    | 2   |      | 2079383-5 SCR, BHSC, RoHS (M4 X 20)           | 33      |
| -   | 2    | 2   |      | 2-2844962-8 SPACER, CYLINDRICAL, STRIP GUIDE  | 30      |
| -   | 1    | 1   |      | 2844992-1 ASSEMBLY, STRIP GUIDE               | 29      |
| -   | 1    | 1   |      | 1-455888-0 SPACER, CRIMPER                    | 28      |
| -   | 1    | 1   |      | 1320928-6 STRIP GUIDE                         | 24      |
| -   | 1    | 1   |      | 2168083-2 SCR, SKT HD CAP, RoHS, M4 X 8.0     | 21      |
| -   | 2    | 2   |      | 1-18028-2 WASHER, FLAT, REG M4                | 20      |
| -   | 1    | 1   |      | 2119533-1 STRIPPER, SIDE FEED                 | 19      |
| -   | 1    | 1   |      | 2119806-1 INSERT, SHEAR                       | 13      |
| -   | 1    | 1   |      | 3-22280-3 SPRING, COMPRESSION                 | 12      |
| -   | 1    | 1   |      | 1-356885-4 STOP, SHEAR                        | 11      |
| -   | 1    | 1   |      | 2119805-1 SHEAR HOLDER, FRONT                 | 10      |
| -   | 1    | 1   |      | 1803095-1 FLOATING SHEAR, FRONT               | 9       |
| -   | 1    | 1   |      | 6-1633927-5 ANVIL, COMBINATION                | 8       |
| -   | 1    | 1   |      | 2-240641-3 SPACER                             | 7       |
| -   | -    | -   |      | -   | 6       |
| -   | 1    | 1   |      | 2119780-9 DEPRESSOR, SHEAR                    | 5       |
| -   | 1    | 1   |      | 238011-7 BLOCK, CRIMPER SPACER                | 4       |
| -   | 1    | 1   |      | 1633961-8 CRIMPER, INSULATION F PREMIUM       | 3       |
| -   | 1    | 1   |      | 455888-3 SPACER, CRIMPER                      | 2       |
| -   | 1    | 1   |      | 1633588-6 CRIMPER, WIRE                       | 1       |

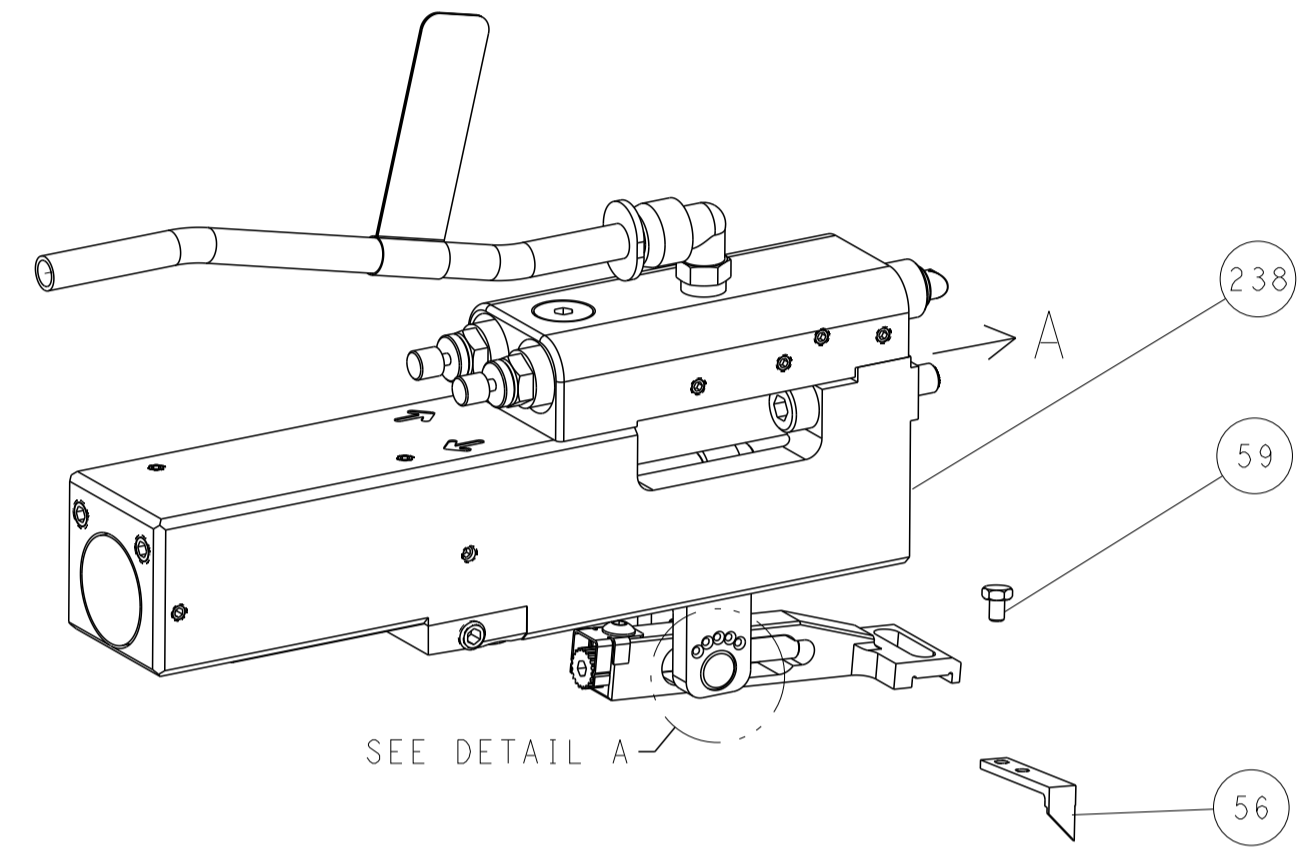
|  |   |  |   |
|--|---|--|---|
| <small>THIS DRAWING IS CONTROLLED DOCUMENT AND THE INFORMATION CONTAINED HEREIN IS UNCLASSIFIED EXCEPT WHERE SHOWN OTHERWISE. IT IS THE POLICY OF TYCOO ELECTRONICS CORPORATION TO MAKE ALL INFORMATION CONTAINED HEREIN AVAILABLE TO THE PUBLIC UNLESS OTHERWISE SPECIFIED.</small> |   | DWN<br>Y. YIN<br>29OCT2013<br>CHK<br>G. BAILEY<br>29OCT2013<br>APVD<br>J. GUO<br>29OCT2013 | NAME<br>TE Connectivity<br>Harrisburg, PA 17105-3608<br>Ocean Side Feed<br>Applicator |
| DIMENSIONS:<br>mm<br>  | TOLERANCES UNLESS OTHERWISE SPECIFIED:<br>0 PLC ±<br>1 PLC ±<br>2 PLC ±<br>3 PLC ±<br>4 PLC ±<br>5 PLC ±<br>ANGLES FINISH ± | WEIGHT<br>-<br>SCALE<br>1:2  | SIZE<br>A1<br>CAGE CODE<br>00779<br>DRAWING NO<br>2266092<br>RESTRICTED TO<br>D       |
| MATERIAL<br>-  |   | Customer Accessible Production Drawing<br>SHEET 3 OF 4                                     |   |

| LOC | DIST | REVISIONS |     |             |      |     |      |
|-----|------|-----------|-----|-------------|------|-----|------|
| A   | 66   | P         | LTN | DESCRIPTION | DATE | OWN | APVD |
| -   | -    | -         | -   | SEE SHEET 1 | -    | -   | -    |

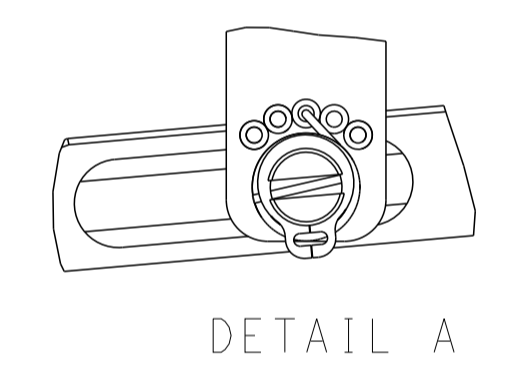
# FEED TYPE MECHANICAL



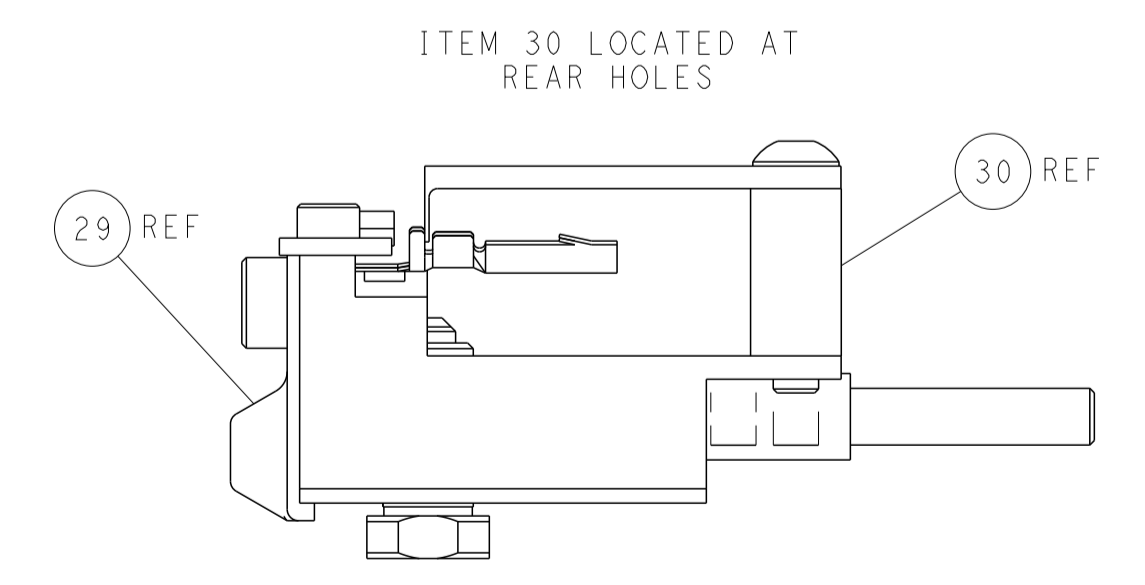
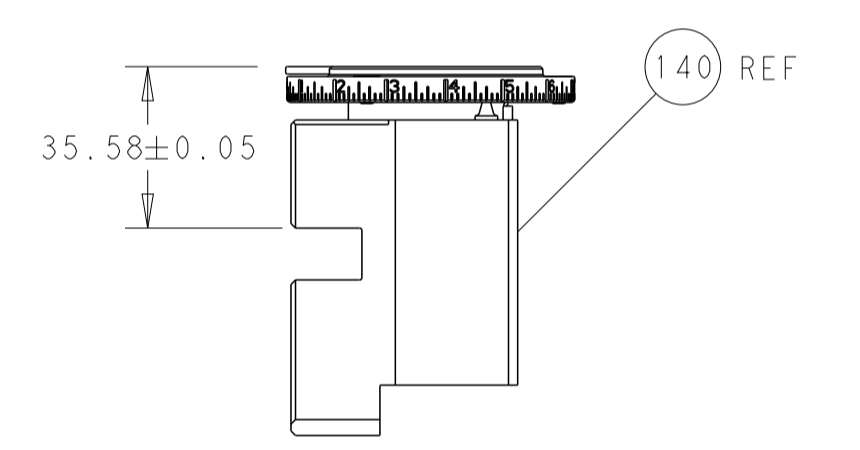
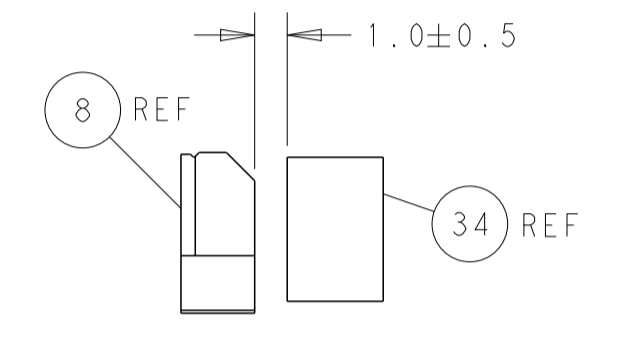
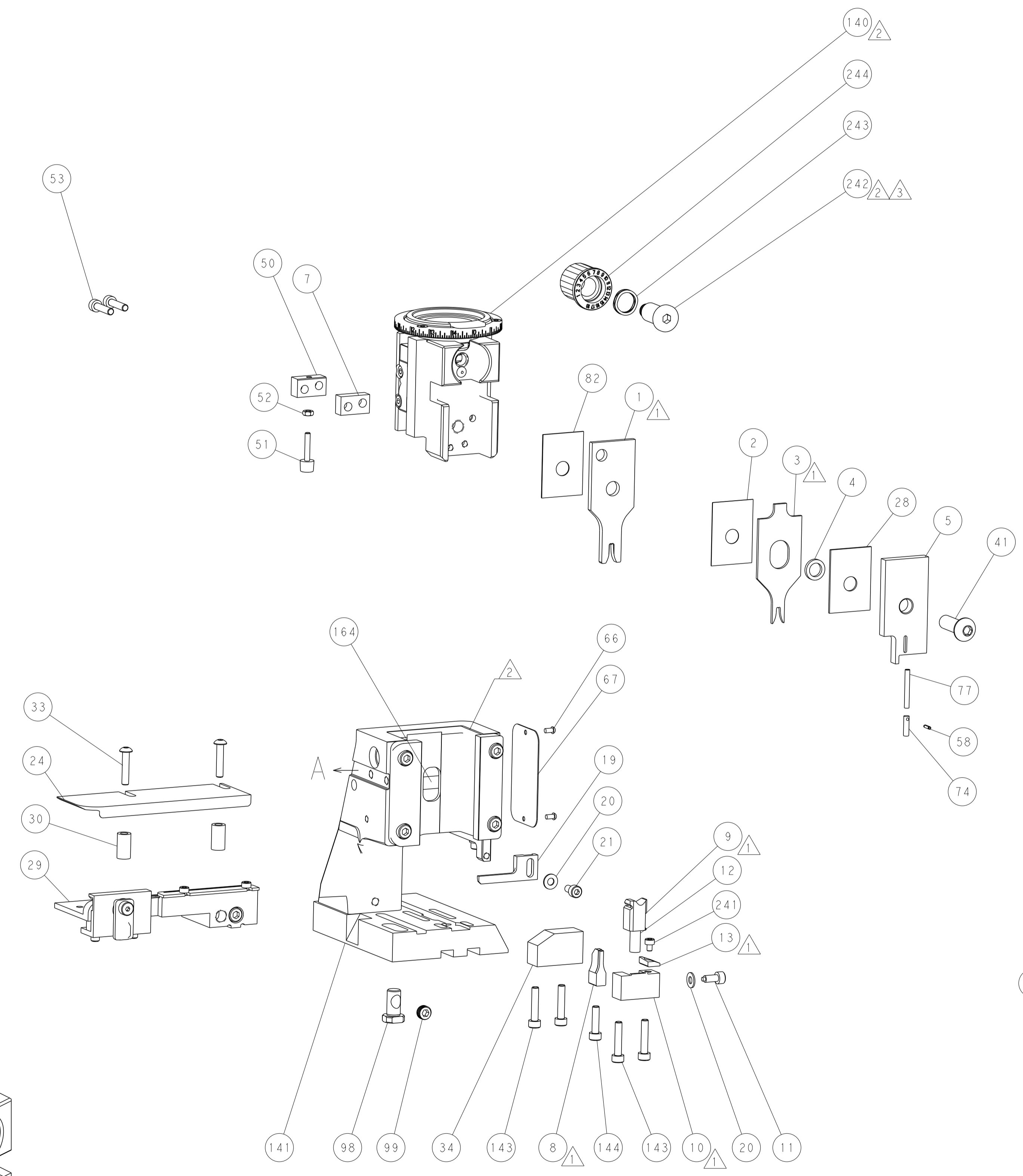
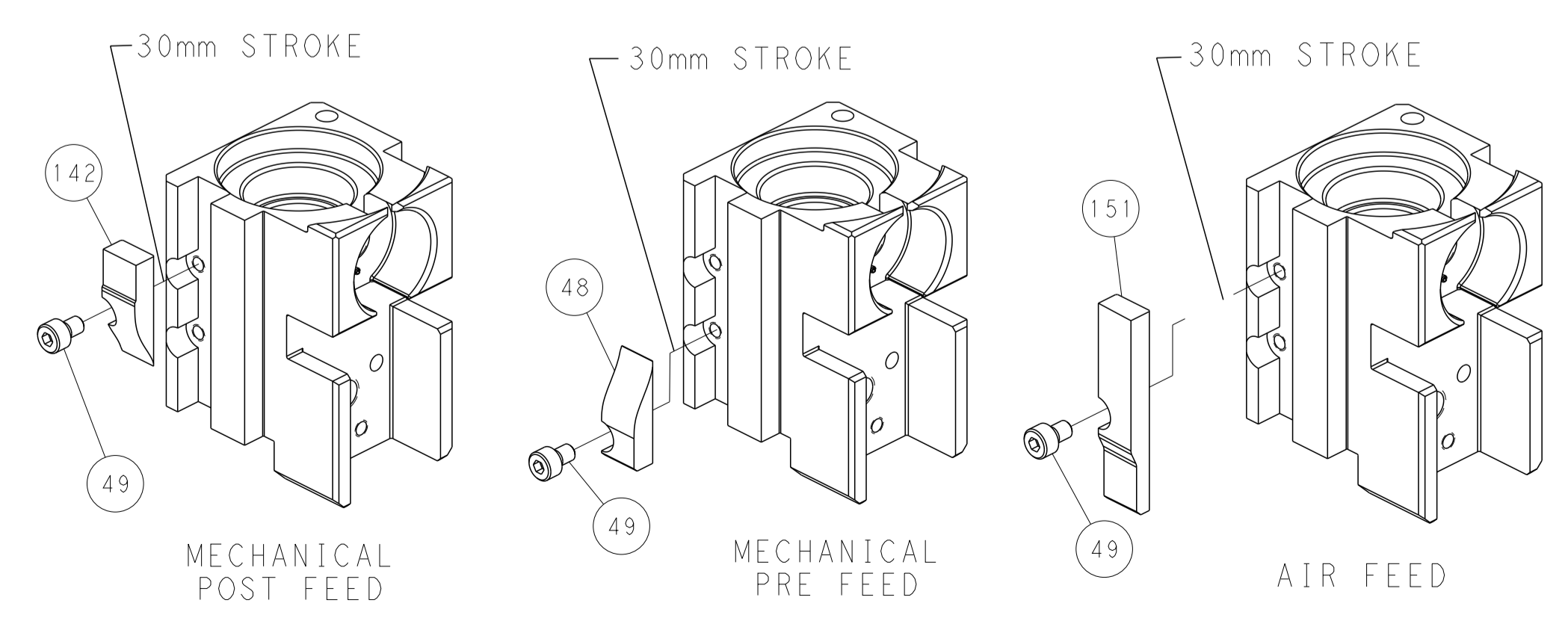
## PNEUMATIC



## FEED SPRING SETTING POSITION (SHOWN FROM REAR SIDE)



# CAM POSITIONS



**PACIFIC VERSION**  
 Shown on sheets 3 of 4 & 4 of 4  
 (Atlantic version shown on sheets 1 of 4 & 2 of 4)

|                       |  |   |  |   |  |   |  |                    |  |
|-----------------------|--|---|--|---|--|---|--|--------------------|--|
| DIMENSIONS:<br>mm<br> |  | TOLERANCES UNLESS OTHERWISE SPECIFIED:<br>0 PLC ±<br>1 PLC ±<br>2 PLC ±<br>3 PLC ±<br>4 PLC ±<br>ANGLES ±<br>FINISH |  | DWN Y. YIN 29OCT2013<br>CHK G. BAILEY 29OCT2013<br>APVD JJ. GUO 29OCT2013<br>PRODUCT SPEC<br>APPLICATION SPEC<br>WEIGHT<br>Customer Accessible Production Drawing |  | NAME<br>Ocean Side Feed Applicator<br>SIZE CAGE CODE DRAWING NO<br>A1 00779 C=2266092<br>SCALE 1:2 SHEET 4 OF 4 REV D |  | RESTRICTED TO<br>- |  |
|-----------------------|--|---|--|---|--|---|--|--------------------|--|