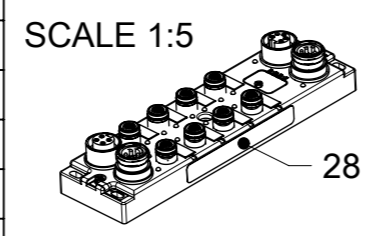
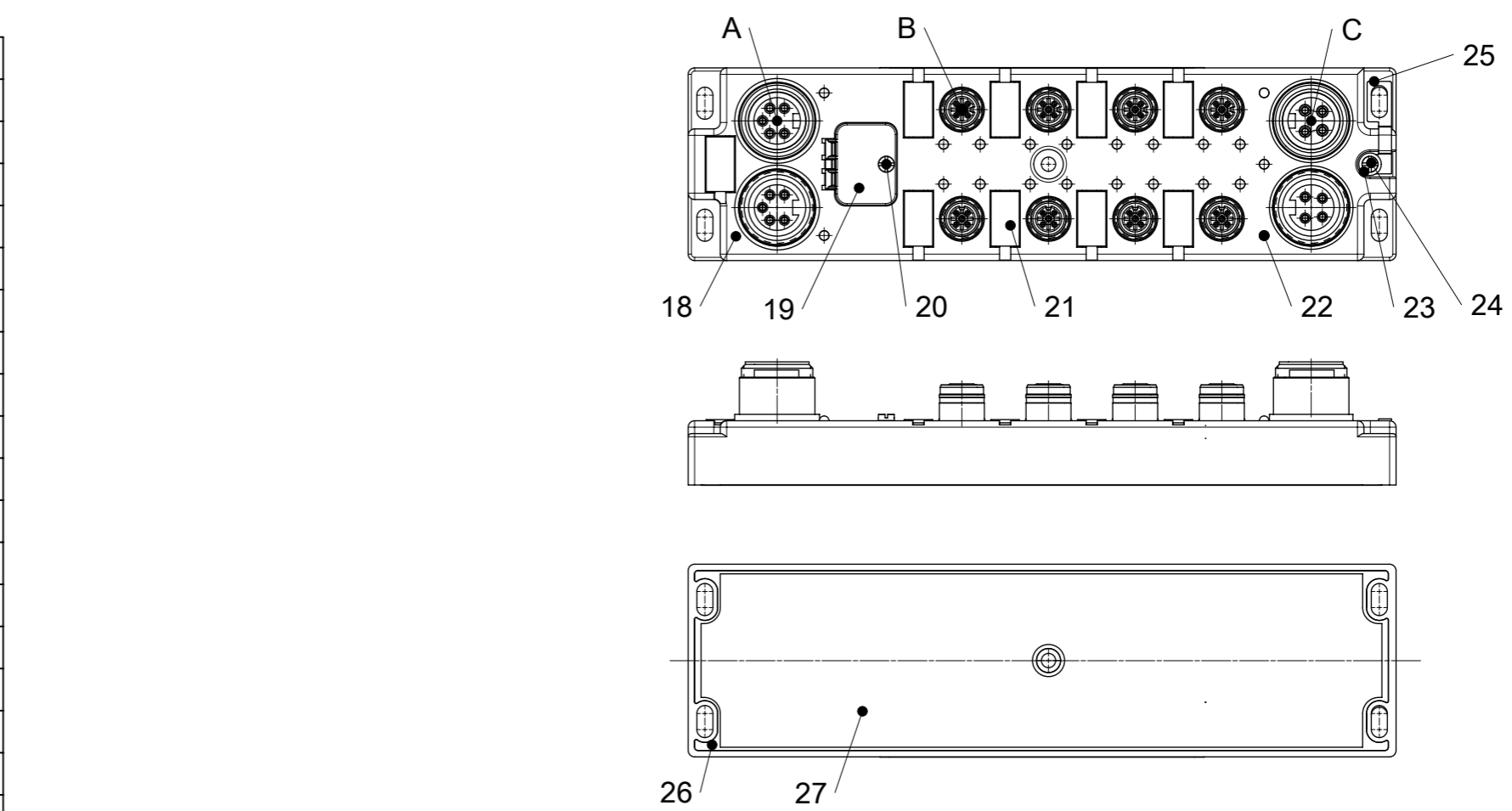


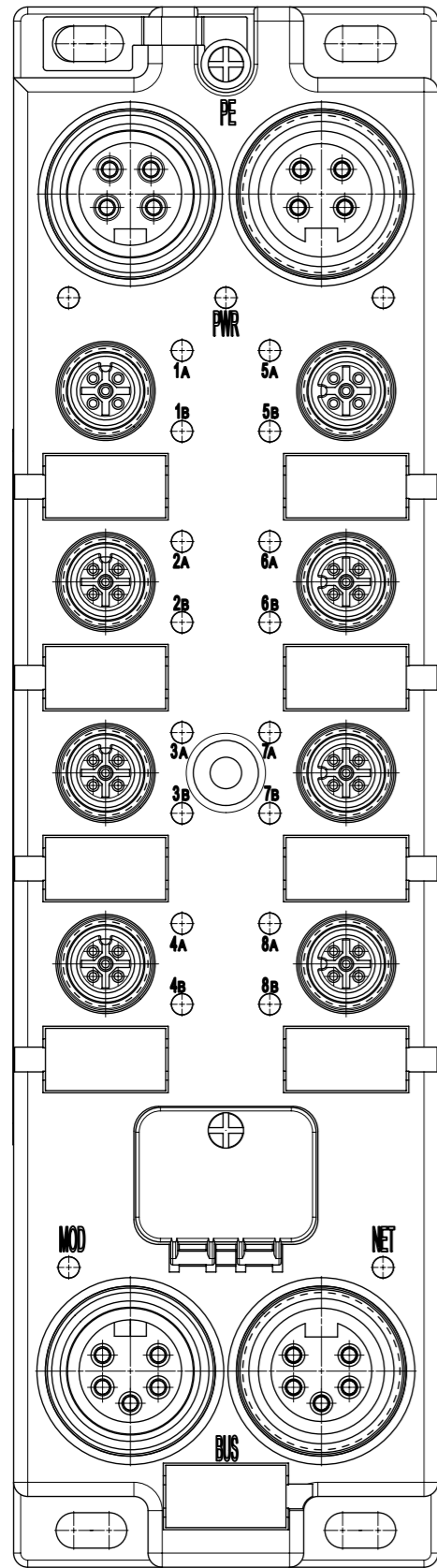
BILL OF MATERIAL

ITEM	DESCRIPTION	MATERIAL	FINISH
1	INSERT	TPE	GREY
2	CONTACT	COPPER ALLOY	NI AU
3	SHELL	BRASS	NICKEL PLATET
4	INSERT	TPE	GREY
5	GASKET	FPM	RED
6	CONTACT	COPPER ALLOY	GOLD OVER NICKEL
7	SHELL	BRASS	NICKEL PLATET
8	INSERT	TPU	BLACK
9	CONTACT	COPPER ALLOY	GOLD OVER NICKEL
10	GASKET	FPM	RED
11	SHELL	BRASS	NICKEL PLATET
12	INSERT	TPE	YELLOW
13	CONTACT	COPPER ALLOY	GOLD OVER NICKEL
14	SHELL	BRASS	NICKEL PLATET
15	INSERT	TPE	YELLOW
16	CONTACT	COPPER ALLOY	GOLD OVER NICKEL
17	SHELL	BRASS	NICKEL PLATET
18	HOUSING	PBT	BLACK
19	WINDOW	PC	TRANSPARENT
20	SCREW	V2V	V2A
21	LABEL	PC	WHITE
22	FIBER OPTIC	PA	TRANSPARENT
23	WASHER	BRASS	NICKEL PLATET
24	SCREW	V2V	V2A
25	SHIELD PLATE	STAINLESS STEEL	STAINLESS STEEL
26	RESIN	EPOXY	TRANSPARENT
27	LABEL	PVC	WHITE
28	LABEL	PVC	YELLOW



THIS DRAWING CONTAINS INFORMATION THAT IS PROPRIETARY TO MOLEX ELECTRONIC TECHNOLOGIES, LLC AND SHOULD NOT BE USED WITHOUT WRITTEN PERMISSION

QUALITY SYMBOLS A = 0 E = 0 F = 0 G = 0 H = 0 I = 0 J = 0 K = 0 L = 0 M = 0 N = 0 O = 0	EC NO: 112857 DRWN: ULETTENMEIER CHK'D: RSILLER APPR: RSILLER DATE: 2017/01/26	GENERAL TOLERANCES (UNLESS SPECIFIED) ANGULAR TOL ± ° 4 PLACES ± 3 PLACES ± 2 PLACES ± 1 PLACE ± 0.3 0 PLACES ± 0.5 DRAFT WHERE APPLICABLE MUST REMAIN WITHIN DIMENSIONS	DIMENSION UNITS: MM SCALE: 1:2 DRWN BY: ULETTENMEIER DATE: 2015/01/19 CHK'D BY: [blank] DATE: [blank] APPR BY: RSILLER DATE: 2015/06/25 DRAWING SIZE: A3 THIRD ANGLE PROJECTION	
	DBO DN 60 MM 7/8" 5P AC MA FE U12 5P 8PT AC FE 7/8" 4P AC MA FE			PRODUCT CUSTOMER DRAWING
	SERIES: 112092 MATERIAL NUMBER: 1120920020 CUSTOMER: GENERAL MARKET		DOCUMENT NUMBER: 1120920020 DOC TYPE: PSD DOC PART: 000 SHEET NUMBER: 2 OF 3	



DEVICE NET PRINTING

TABLE 1 DEVICE NET PRINTING					
POWER TYPE	INPUT / OUTPUT		ENG.NO.	MOLEX P/N	3D MODEL NO.
7/8" 5 POLE	NPN	8I /8O	TCDDN-888N-11U	1120920020	1120920020 (PDM)
	PNP	8I /8O	TCDDN-888P-11U	1120920009	
		8I /8O	TCDDN-888P-11U (A)	1120925011	

QUALITY SYMBOLS ▽A = 0 ▽E = 0 ▽F = 0 ▼ = 0 ▽C = 0 ⊗ = 0 ■ = 0 ▽ = 0	THIS DRAWING CONTAINS INFORMATION THAT IS PROPRIETARY TO MOLEX ELECTRONIC TECHNOLOGIES, LLC AND SHOULD NOT BE USED WITHOUT WRITTEN PERMISSION											
	EC NO: 112857 DRWN: ULETTENMEIER CHK'D: APPR: RSILLER	2017/01/26 2017/01/26	GENERAL TOLERANCES (UNLESS SPECIFIED)		DIMENSION UNITS	SCALE						
			ANGULAR TOL ± °		MM	1:1						
			4 PLACES ±	DRWN BY		DATE		DBO DN 60 MM 7/8" 5P AC MA FE U12 5P 8PT AC FE 7/8" 4P AC MA FE				
			3 PLACES ±	ULETTENMEIER		2015/01/19						
			2 PLACES ±	CHK'D BY		DATE						
	1 PLACE ± 0.3	APPR BY		DATE		PRODUCT CUSTOMER DRAWING						
	0 PLACES ± 0.5	RSILLER		2015/06/25		SERIES	MATERIAL NUMBER	CUSTOMER				
	DRAFT WHERE APPLICABLE MUST REMAIN WITHIN DIMENSIONS		DRAWING SIZE	THIRD ANGLE PROJECTION			112092	1120920020	GENERAL MARKET			
			A3				DOCUMENT NUMBER	DOC TYPE	DOC PART	SHEET NUMBER		
						1120920020	PSD	000	3 OF 3			