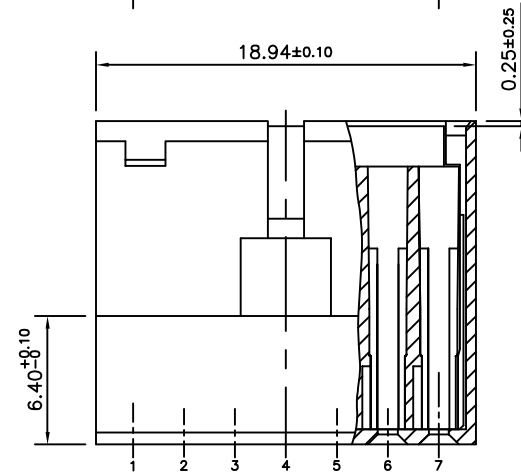
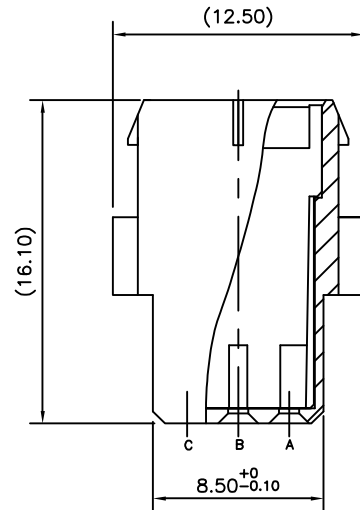
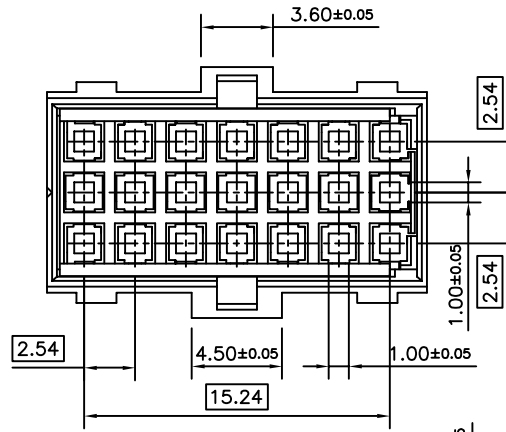



PRODUCT NUMBER	REMARKS
68343-001	ASSEMBLED
68343-002	UNASSEMBLED



**NOTES:-**

1. THIS PRODUCT MEETS EUROPEAN UNION DIRECTIVES AND OTHER COUNTRY REGULATIONS AS DESCRIBED IN GS-22-008.
2. LEADFREE OR RoHS DIRECTIVE LABELLING TO BE PROVIDED AS PER GS-14-920.
3. " LF " SUFFIX TO PRODUCT NUMBER FOR RoHS COMPATIBLE/ LEADFREE VERSION.
4. PARTS WITH AND WITHOUT "LF " SUFFIX ARE FORM-FIT AND FUNCTIONALLY IDENTICAL. " LF " SUFFIX PROVIDED FOR PART NUMBER STANDARDISATION OF PART THAT MEETS RoHS REQUIREMENTS.
5. FOR APPLICATION SEE TA 565
6. MATERIAL : THERMOPLASTIC POLYESTER; 30% GLASS FILLED; UL-94-V0; COLOUR: GREY

mat'l. code SEE NOTE		surface ISO 1302	tolerance ISO 406 ISO 1101	projection mm	product family BACKPANEL
ltr	ecn no	dr	date	tolerances unless otherwise specified	title <b>B.P 3x7 POS.</b> C.T.W HOUSING
B	106-0103	MINI	2006-06-01	angles linear	scale 4:1
		dr	MINI K VANDANATH	2006-06-01	
		enfr	RAKHEE GEORGE	2006-06-01	
		chr	RAKHEE GEORGE	2006-06-01	
		appd	RAKHEE GEORGE	2006-06-01	
sheet index	revision sheet	B	1	dwg no <b>68343</b> sheet 1 of 1 size <b>A3</b> type Product Customer Drawing	