

6

5

4

3

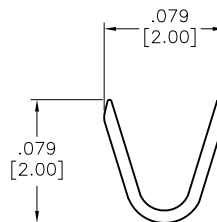
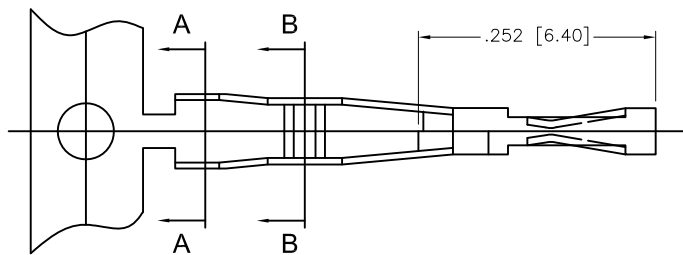
2

1

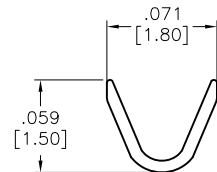
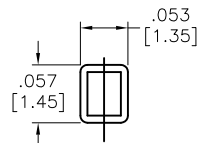
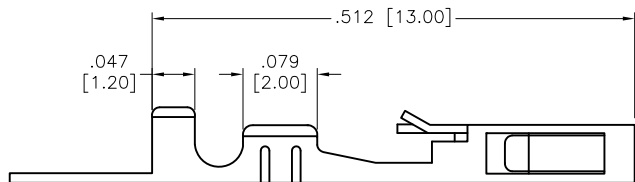
APPROVED: \_\_\_\_\_

DATE: \_\_\_\_\_ TITLE: \_\_\_\_\_

Rev	AWO #	Description	Date	Appr
-		RELEASED	7/1/09	
A		REDRAWM	03/22/13	



SECTION A-A



SECTION B-B

SPECIFICATIONS:

Material: Phosphor Bronze

Plating: Tin Plated

Thickness: 0.2mm

Wire Range: AWG#24~#28

Electrical:

Voltage rating: 250 VAC/DC

Current rating: AC/DC 3 A

Insulation resistance: 1,000 Mohms min

Dielectric withstanding voltage: 1,000 VAC for 1 minute

Operating temperature: -25°C to +85°C

Environmental:

Lead free, RoHS compliant.



UNLESS OTHERWISE SPECIFIED  
 ALL DIMENSIONS ARE INCHES [MM]  
 TOLERANCES: EXCEPT AS NOTED

INCHES		HOLES	
.X	± .10	∅.X	± .10
.XX	± .020	∅.XX	± .015
.XXX	± .015	∅.XXX	± .010

**ADAM TECH**

909 Rahway Avenue, Union, NJ 07083  
Phone: 908-687-5000 Fax: 908-687-5710

APPROVALS		DATE
DRAWN	SS	7/1/09
CHECKED		
APPROVED		

TITLE		
CRIMP CONTACT		
SIZE	PART NO.	REV.
X	CDH-C-R	A
REF:	S00016T	SCALE: NTS
SHEET 1 OF 1		

6

5

4

3

2

1