



MEC's exclusive snap-on keycap in 10.4 mm total height. Optimized for use with foil overlays.

The 1JS keycaps are available in nine standard colours: 00 blue/02 green/03 grey/04 yellow/06 white/08 red/09 black/11 transparent/16 frosted white.

In combination with the switch the 1JS becomes the lowest illuminated keycap possible; especially designed for foil overlays and featuring soft edges for extended foil overlay lifetime. The 1JS 11 transparent/16 frosted white has superior illumination potential when combined with the newest Multimec 5G switch. Illumination can be either surface mount or through-hole. Cap retention is optimized with an innovative "snap-on" system.



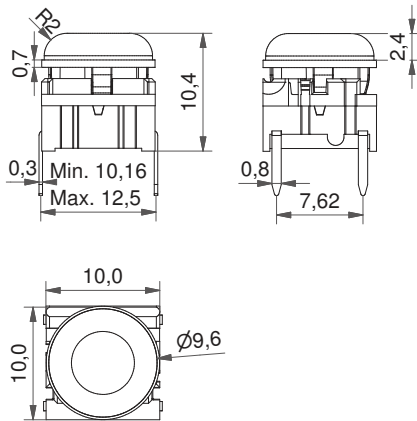
Distributor:

### Technical Data:

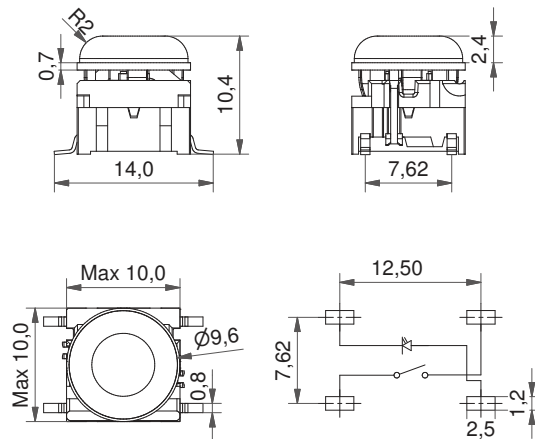
- through-hole or SMD
- 50mA/24VDC
- single pole/momentary
- 10.000.000 operations lifetime
- IP67 sealing
- temperature range:  
LED: -40/+85°C  
high temp: -40/+160°C  
keycap: -40/+65°C
- actuation force: 2,0, 3,5, 6,5 N



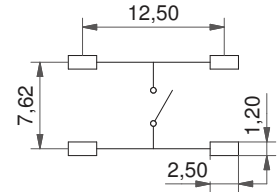
### Dimensions (through-hole)



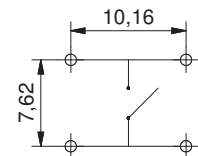
### Dimensions (SMD w/LED)



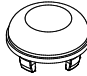
### PCB Layout SMD

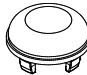


### PCB Layout TH



### HOW TO ORDER

|               |                                       |                          |   |   |   |                                    |
|---------------|---------------------------------------|--------------------------|---|---|---|------------------------------------|
| <b>5 G</b>    | <input type="checkbox"/>              | <input type="checkbox"/> | <input type="checkbox"/>  | + | <b>1 J S</b>  | <input type="checkbox"/>           |
| <b>Switch</b> | <b>Mounting</b>                       | <b>Actuation force</b>   | <b>LED</b>  |   | <b>Cap</b>  | <b>Colour code</b>                 |
|               | TH9 through-hole<br>SH9 surface mount | 20<br>35<br>65           | 01 blue<br>22 green<br>42 yellow<br>61 white<br>82 red<br>2242 green/yellow<br>8222 red/green |   |  | 11 transparent<br>16 frosted white |

|               |                                       |                          |   |   |   |
|---------------|---------------------------------------|--------------------------|---|---|---|
| <b>5 G</b>    | <input type="checkbox"/>              | <input type="checkbox"/> | + | <b>1 J S</b>  | <input type="checkbox"/>  |
| <b>Switch</b> | <b>Mounting</b>                       | <b>Actuation force</b>   |   | <b>Cap</b>  | <b>Colour code</b>  |
|               | TH9 through-hole<br>SH9 surface mount | 20<br>35<br>65           |   | 1JS solid colour<br> | 00 blue<br>02 green<br>03 grey<br>04 yellow<br>06 white<br>08 red<br>09 black |

Dimensions (mm) Unless otherwise specified, all tolerances +/- 0,2

**Ordering example:** 5GTH935+1JS08 without illumination  
5GTH93501+1JS16 with illumination

See colour codes on our website: [www.mec.dk](http://www.mec.dk)

For product updates and/or changes of specifications please see [www.mec.dk](http://www.mec.dk)