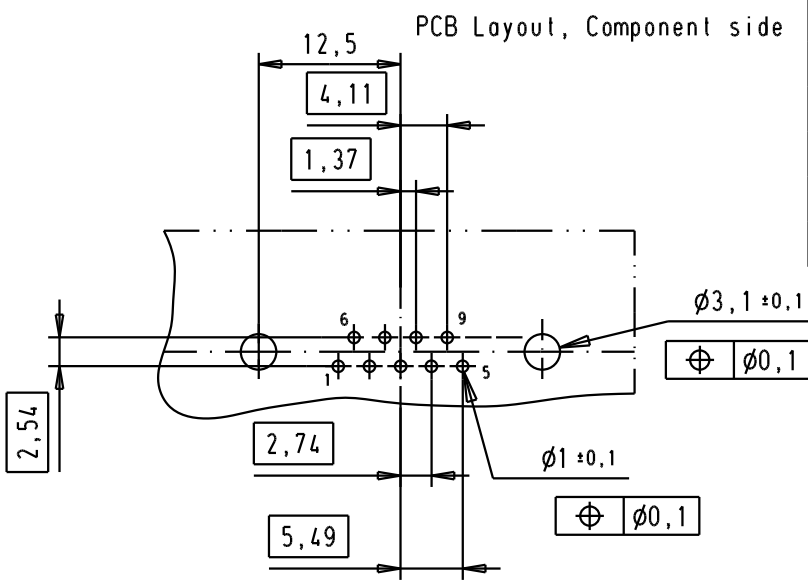
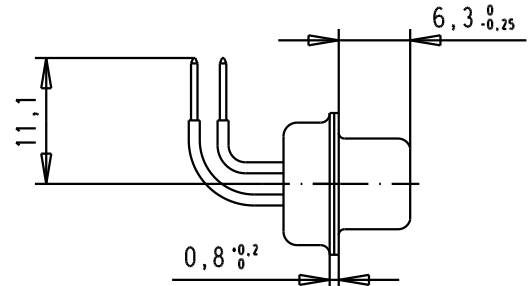
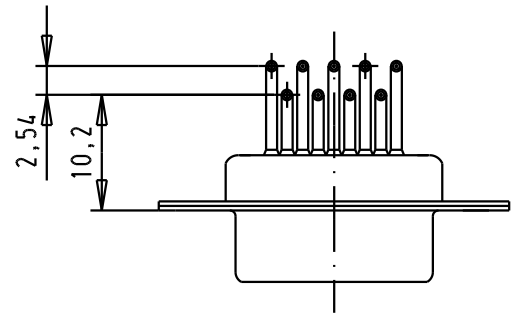
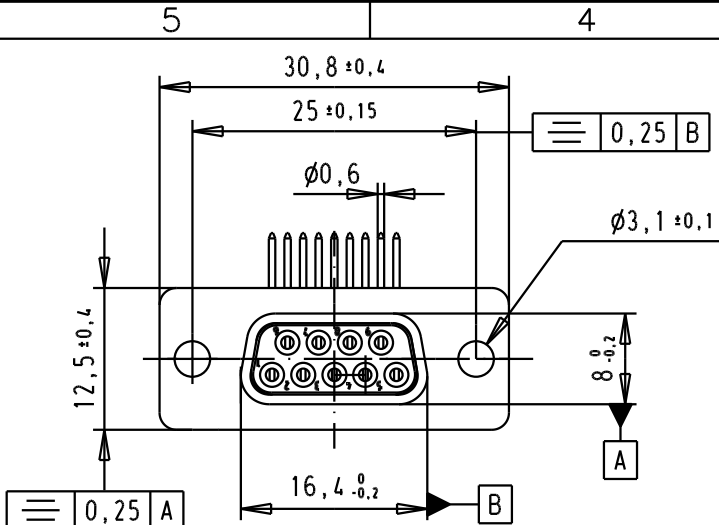


D
C
B
A



SPECIFICATION

Mating Cycles	500
Filter type	C
Capacitance	3900pf ± 20%
Working Voltage	100v
Current Rating	7.5A
Insulation Resistance	>1GΩ

FREQUENCY (MHz)	ATTENUATION (dB)
5	6dB
10	11dB
50	25dB
100	35dB
500	35dB
1000	32dB

						 D-Sub, female, angled, 9 Poles, with turned solder pin, fixing hole	Me?Ms Lab/ Scale 1.5:1	
			Detail.	8- JUL -02	CV			All Dim. in mm Orig. Size DIN A 4
			Insp.					
			Stand.					
32802	11/07/05	JMDR	HARTING EURL F-95972 Paris				TB 09641147240	Blatt/ Page 1 / 1
31058	8- JUL -02	CV						
Mod.	Dat.	Name						