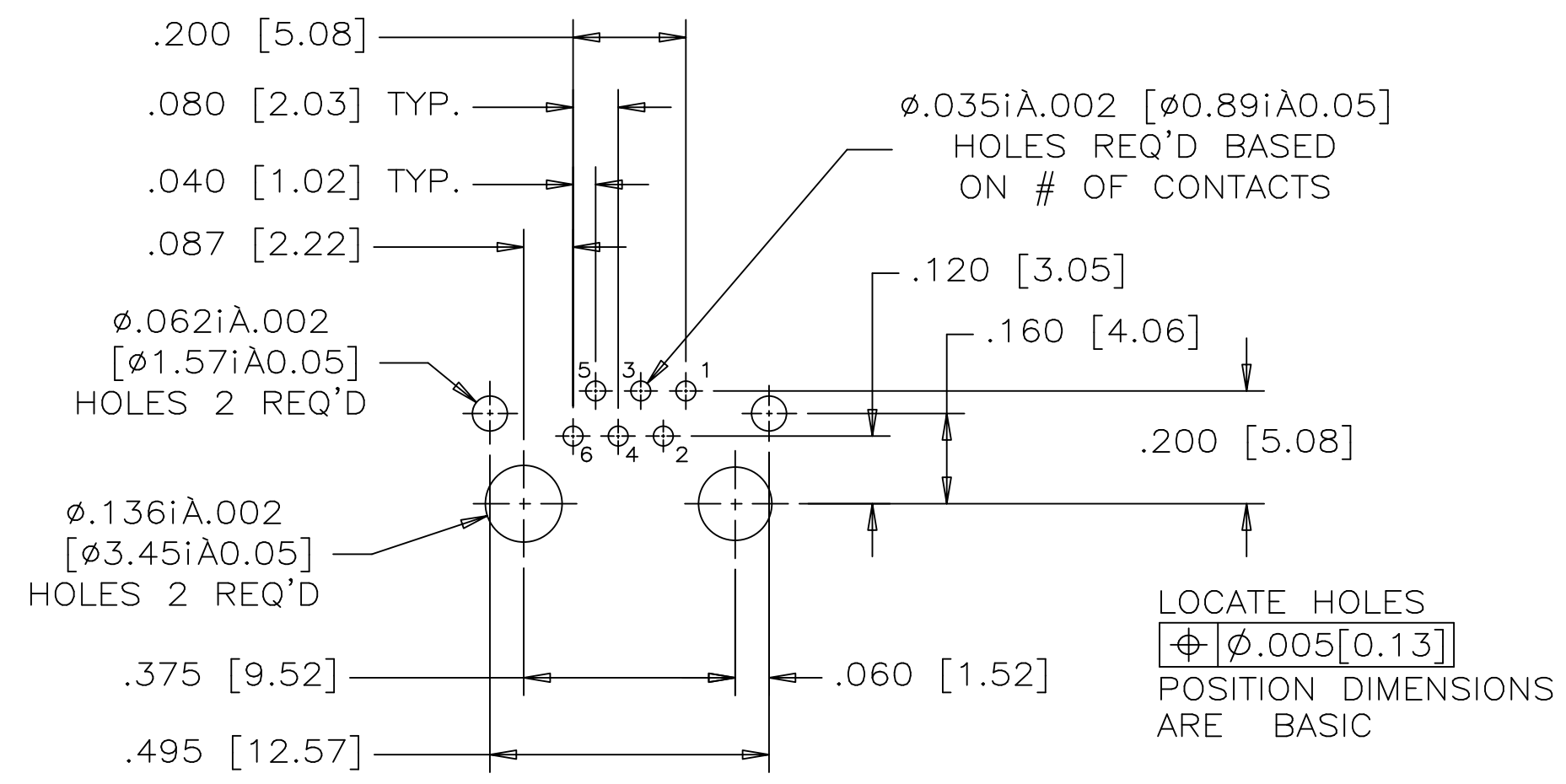
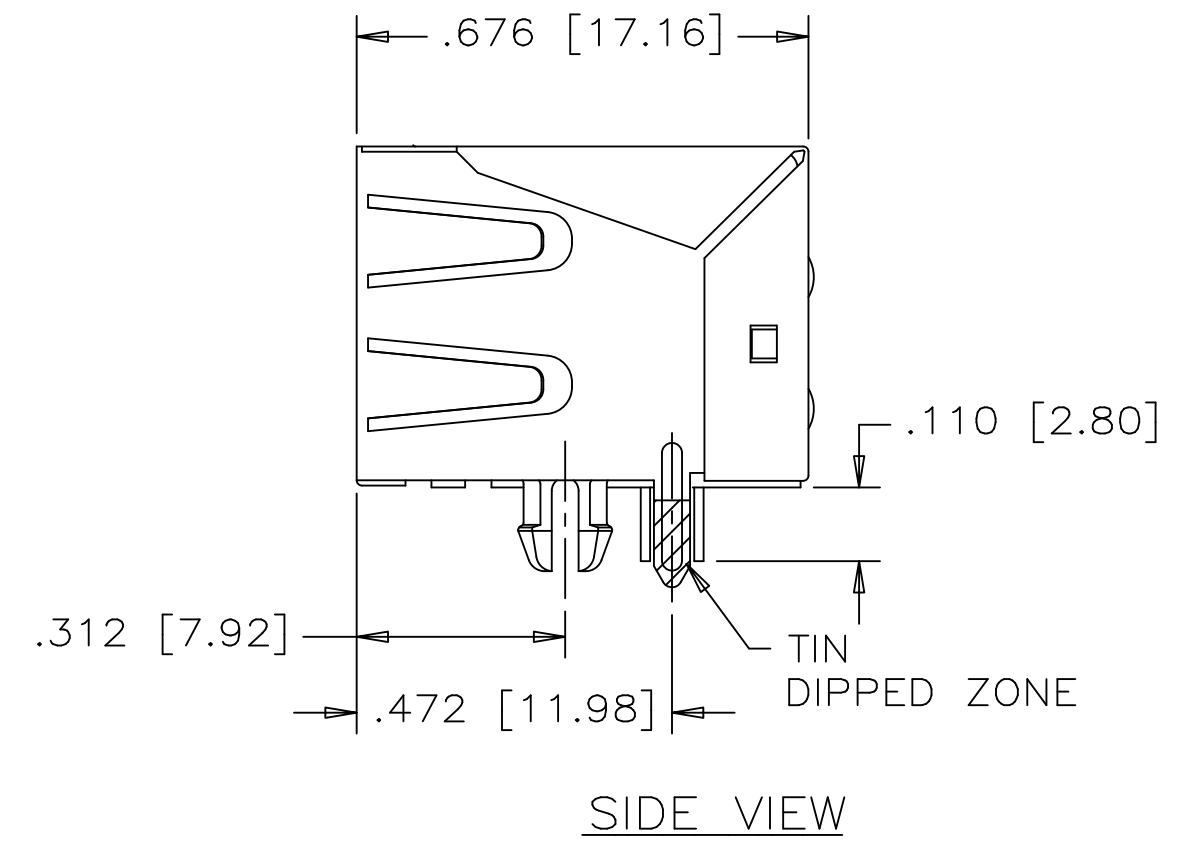
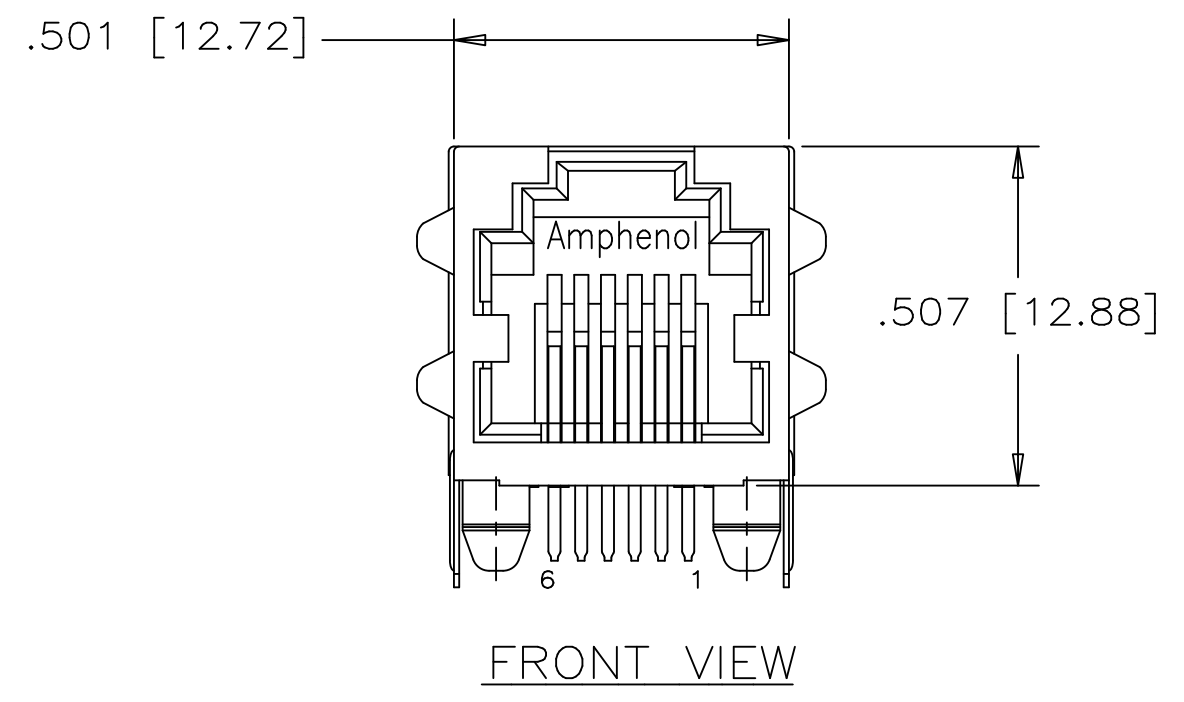


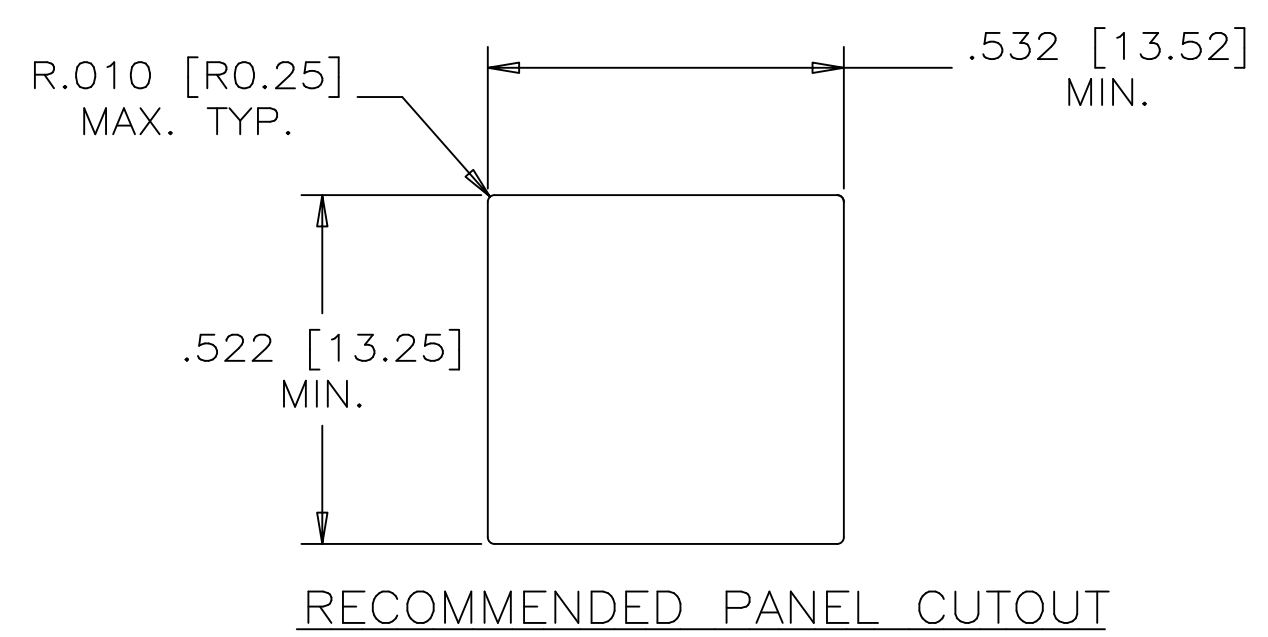
| REVISIONS | | | | |
|-----------|------|---------------------------|-----------|--------|
| SYM | ZONE | ECN, ERN NO. | DATE | APPRD. |
| A | | PROPOSAL | OCT.25/04 | K.L. |
| B | | PROPOSAL | MAR.29/06 | L.CHAN |
| C | | PROPOSAL | DEC.29/09 | L.CHAN |
| D | | ADD OPERATING TEMPERATURE | MAY30/13 | L.CHAN |



- MATERIALS:**
HOUSING: HIGH TEMPERATURE ENGINEERING THERMOPLASTIC FLAMMABILITY RATING UL 94V-0, BLACK

CONTACTS: PHOSPHOR BRONZE
 PLATING: 50 μ" [1.27 MICRONS] MIN. GOLD ON MATING SURFACES.
 50 μ" [1.27 MICRONS] MIN. NICKEL UNDERPLATE
 100 μ" [2.54 MICRONS] MIN. MATTE TIN ON CONTACT TAILS.

SHIELD: COPPER ALLOY
 PLATING: NICKEL WITH TIN DIPPED PCB TAILS.
- ENVIRONMENTAL:**
 OPERATING TEMPERATURE: -55°C to 85 °C
- RECOMMENDED SOLDERING TEMPERATURE:**
 WAVE SOLDERING OR REFLOW SOLDERING AT 260°C MAXIMUM FOR 5 SEC MAXIMUM.



PART NUMBER: RJE01-6X2-01

- CONTACTS:**
 2 = 2 CONTACTS LOADED IN POSITION 3 & 4.
 4 = 4 CONTACTS LOADED IN POSITION 2 TO 5.
 6 = 6 CONTACTS LOADED IN POSITION 1 TO 6.



| | | | |
|-------------------|--------------|------|-----------|
| DRAWN | L.CHAN | DATE | OCT.25/04 |
| DESIGNED | | | |
| CHECKED | K.LAMBIE | DATE | OCT.25/04 |
| I. E. APPRD. | | | |
| Q. A. APPRD. | | | |
| DWG. APPRD. | | | |
| ENG. REL. NO. | | | |
| REF. EAR: | RJ13076 | | |
| DIMENSIONS ARE IN | CODE ID. NO. | | |
| INCHES [mm] | 03554 | | |

| | | | |
|--|----------------|-------------|--------------|
| Amphenol Canada Corp. | | | |
| TITLE HIGH SPEED MODULAR JACK, SINGLE PORT, EMI QUIET, 6 POSITION, SHIELDED WITH SIDE TABS- RoHS COMPLIANT | | | |
| DWG | DRAWING NO. | REV. | |
| | P-RJE01-6X2-01 | D | |
| SCALE | WT. ----- | SURF. ----- | SHEET 1 OF 1 |

THIS DOCUMENT CONTAINS PROPRIETARY INFORMATION AND SUCH INFORMATION MAY NOT BE DISCLOSED TO OTHERS FOR ANY PURPOSE OR USED FOR MANUFACTURING PURPOSES WITHOUT WRITTEN PERMISSION FROM AMPHENOL CANADA CORP.