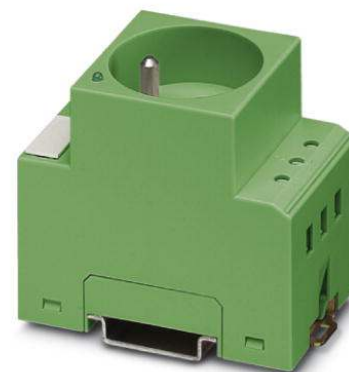


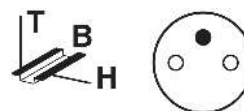
SD-F/SC/LA

Order No.: 2963336




<http://eshop.phoenixcontact.de/phoenix/treeViewClick.do?UID=2963336>

Rail-mountable socket, with screw connection, with light indicator, housing color green, national version: F



Commercial data

GTIN (EAN)	 4 017918 190699
sales group	H070
Pack	5 pcs.
Customs tariff	85366990
Catalog page information	Page 603 (IF-2009)

Product notes

WEEE/RoHS-compliant since:
09/07/2006



<http://www.download.phoenixcontact.com>
Please note that the data given here has been taken from the online catalog. For comprehensive information and data, please refer to the user documentation. The General Terms and Conditions of Use apply to Internet downloads.

Technical data

General data

Nominal voltage U_N	250 V AC
Nominal current I_N	10 A DC
	16 A AC

Status display	Glow lamp or LED with preresistor
Contact material	CuZn37
For country-specific use in	F
Color	green
Insulating material	PA
Ambient temperature (operation)	-20 °C ... 60 °C
Ambient temperature (storage/transport)	-20 °C ... 60 °C
Standards/regulations	IEC 83
	DIN 49440-1
Width	45 mm
Height	75 mm
Depth	70.5 mm

Connection data

Conductor cross section solid min.	0.2 mm ²
Conductor cross section solid max.	4 mm ²
Conductor cross section stranded min.	0.2 mm ²
Conductor cross section stranded max.	2.5 mm ²
Conductor cross section AWG/kcmil min.	24
Conductor cross section AWG/kcmil max	12
Type of connection	Screw connection
Stripping length	8 mm
Screw thread	M3

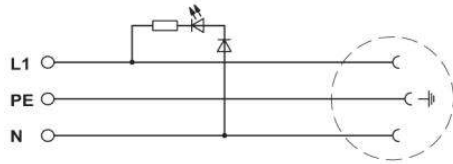
Certificates / Approvals

Certification

GOST

Diagrams/Drawings

Circuit diagram



SD-F/SC/LA Order No.: 2963336

<http://eshop.phoenixcontact.de/phoenix/treeViewClick.do?UID=2963336>

Address

PHOENIX CONTACT Deutschland GmbH
Flachmarktstr. 8
32825 Blomberg, Germany
Phone +49 5235 3 12000
Fax +49 5235 3 41200
<http://www.phoenixcontact.de>



© 2011 Phoenix Contact
Technical modifications reserved;