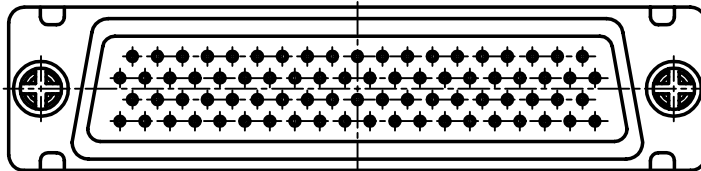
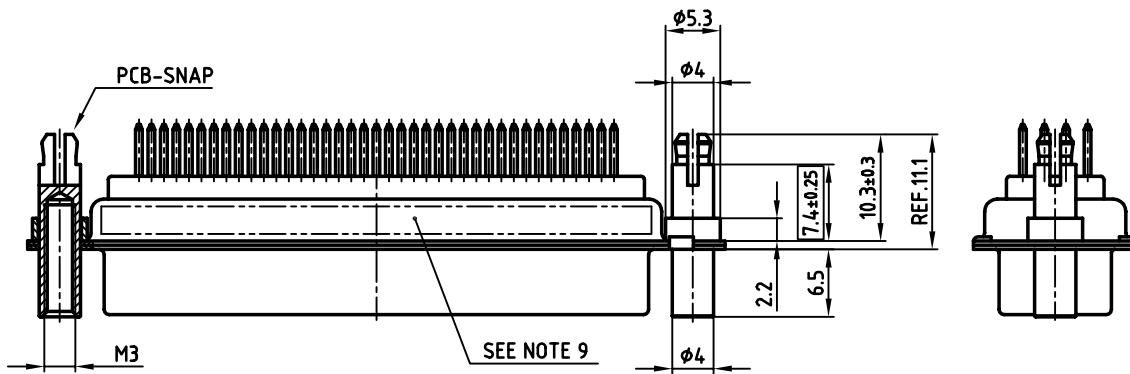
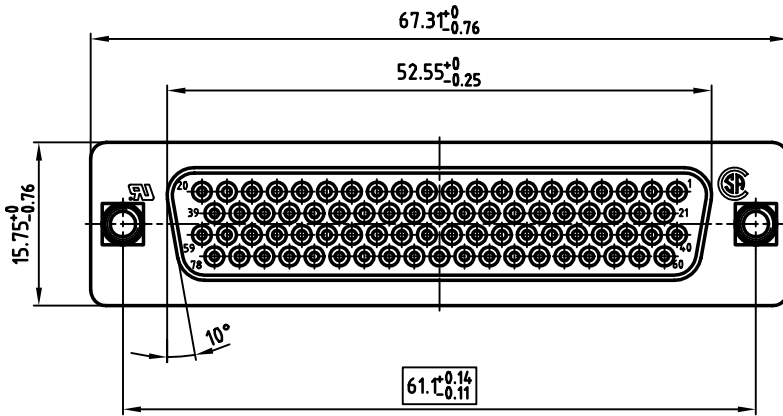
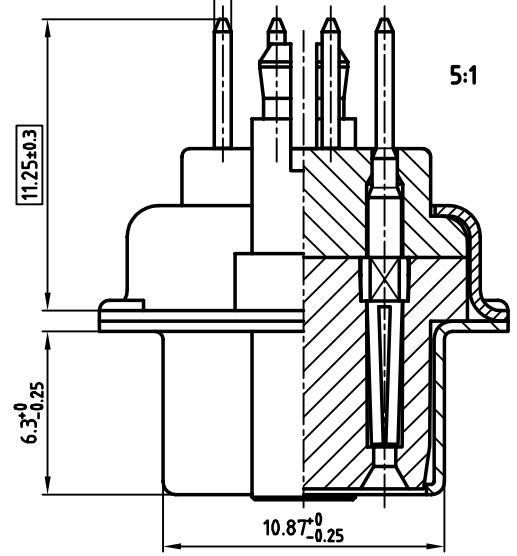


NOTES:

1. METALSHELLS: STEEL; min. 320µ" TIN
2. INSULATORS: PBT GF UL 94 V-0, BLACK
3. CONTACTS: COPPER ALLOY
4. PLATING: min. 8µ" HARD GOLD OVER min. 50µ" NICKEL
5. THREADED LOCK/SPACER CLIP: COPPER ALLOY; min. 200µ" TIN over 80µ" NICKEL
PCB-HOLE: $\phi 3.1 \pm 0.1$; PCB THICKNESS 1.6mm
6. COLLAR: COPPER ALLOY; min. 200µ" TIN over 80µ" NICKEL
7. P.C.B. HOLE DRILLINGS ON SHEET 2
8. MAXIMUM TORQUE VALUE FOR THREAD: 6" LBS
9. CONNECTOR IS PART MARKED: 164A17549X CONEC Y/WW
10. = CRITICAL DIMENSION

used for: D-SUB HD

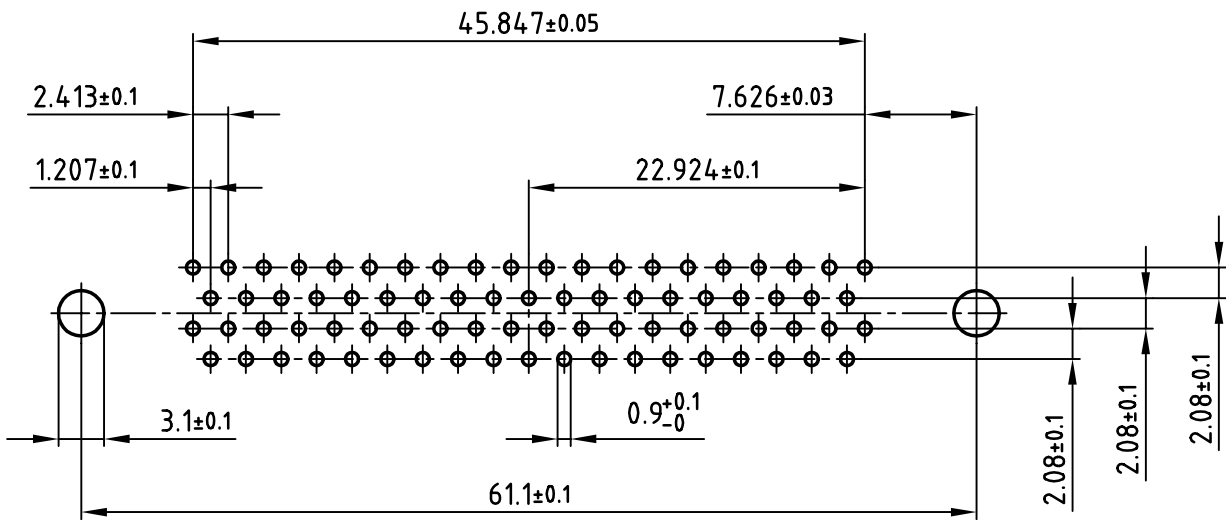
$\phi 0.65$



THIS DRAWING MAY NOT BE COPIED OR REPRODUCED IN ANY WAY, AND MAY NOT BE PASSED ON TO A THIRD PARTY, WITHOUT WRITTEN PERMISSION. OWNERSHIP AND COPYRIGHT OF CONEC GmbH DO NOT ALTER CAD DRAWING BY HAND	tolerance				scale: 2:1 (5:1)
					material: SEE NOTES
	2002	date	name		title: D-SUB HD FEMALE 78pos. SOLDER PIN STRAIGHT with threaded lock and spacer clip
	drawn	02.05.	Parei		
	appd.	02.05.	E. Mickenbecker		
norm	DIN 41652				
	d-old			dwg no: AutoCAD 2000	
					DIN-A
					3
part no: 164A17549X					sh:1/2



used for: D-SUB HD



THIS DRAWING MAY NOT BE COPIED OR REPRODUCED IN ANY WAY, AND MAY NOT BE PASSED ON TO A THIRD PARTY WITHOUT WRITTEN PERMISSION. OWNERSHIP AND COPYRIGHT OF CONEC GmbH DO NOT ALTER CAD DRAWING BY HAND

rev.	description	date	name

tolerance			
2002	date	name	
drawn	02.05.	Parei	CONEC [®]
appd.	02.05.	E. Mickenbecker	
norm	DIN 41652		
d-old			

scale:	2:1	
material:	SEE SHEET 1	
title:	P.C.B. HOLE DRILLINGS D-SUB HD FEMALE 78pos. SOLDER PIN with threaded lock and spacer clip	
dwg no:	AutoCAD 2000	DIN-A
	16K1A565	4
		sh:2/2
part no:	SEE SHEET 1	