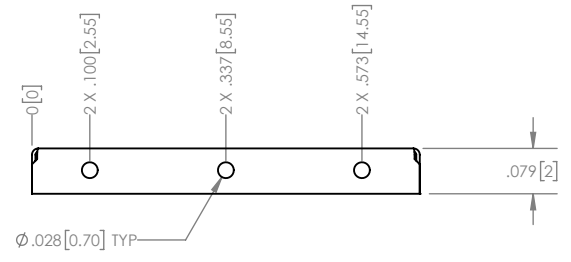
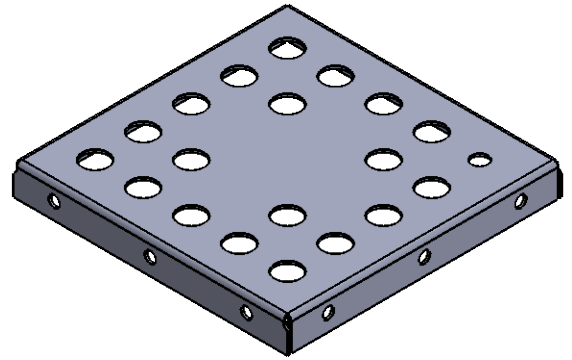
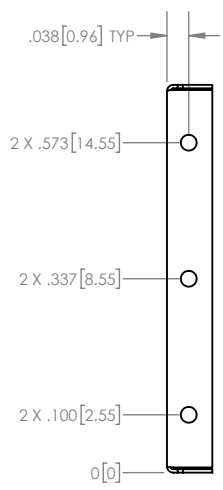
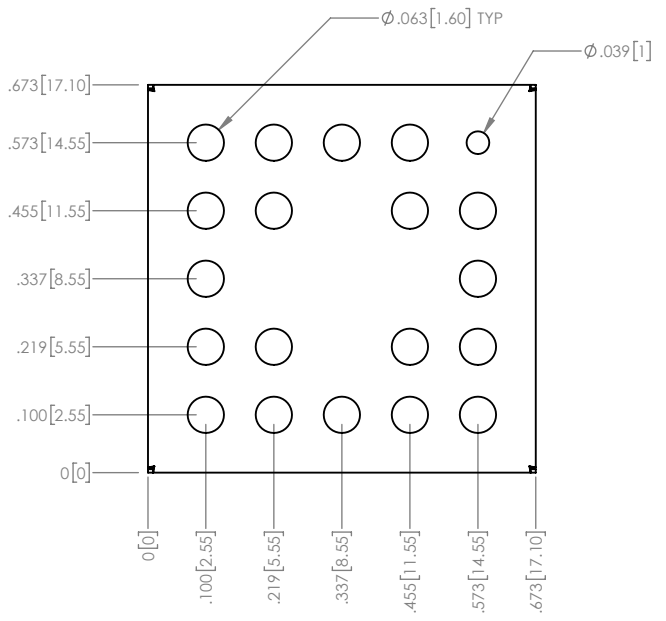


8 7 6 5 4 3 2 1

NOTES:

- 1. MATERIAL: 0.006" TIN PLATED STEEL PER ASTM A623/A624



A

B

C

D

A

B

C

D

PROPRIETARY NOTICE: THESE DRAWINGS, LISTS OR SPECIFICATIONS ARE THE CONFIDENTIAL INFORMATION AND/OR TRADE SECRETS OF 3G SHIELDING SPECIALTIES, P., AND ISSUED IN STRICT CONFIDENCE. NO PART OF THIS DOCUMENT IS TO BE REPRODUCED, TRANSMITTED, USED FOR THE PHYSICAL MANUFACTURE OR SALE OF EQUIPMENT OR USED FOR ANY OTHER PURPOSE OTHER THAN EVALUATION.

UNLESS OTHERWISE SPECIFIED
U/M INCHES
TOLERANCE ± 0.005

ROHS COMPLIANCE 2011/65/EU

DATE 16-01-26



PART NUMBER PIC-S-202C	REV. 0
DESCRIPTION SHIELD COVER	
SCALE 3:1	SHEET 1 OF 1

8 7 6 5 4 3 2 1