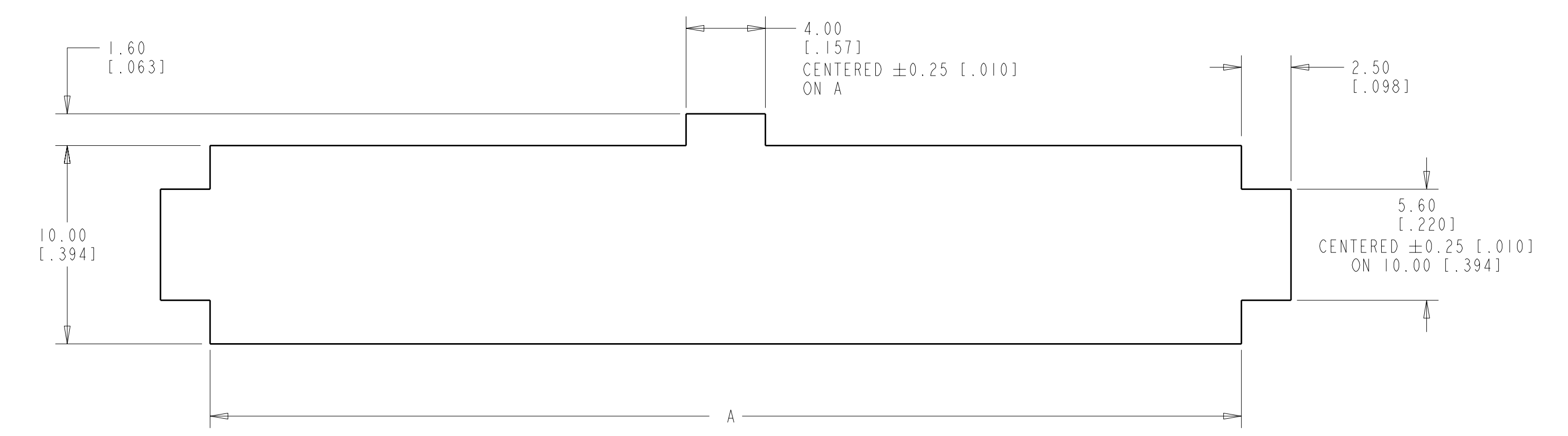
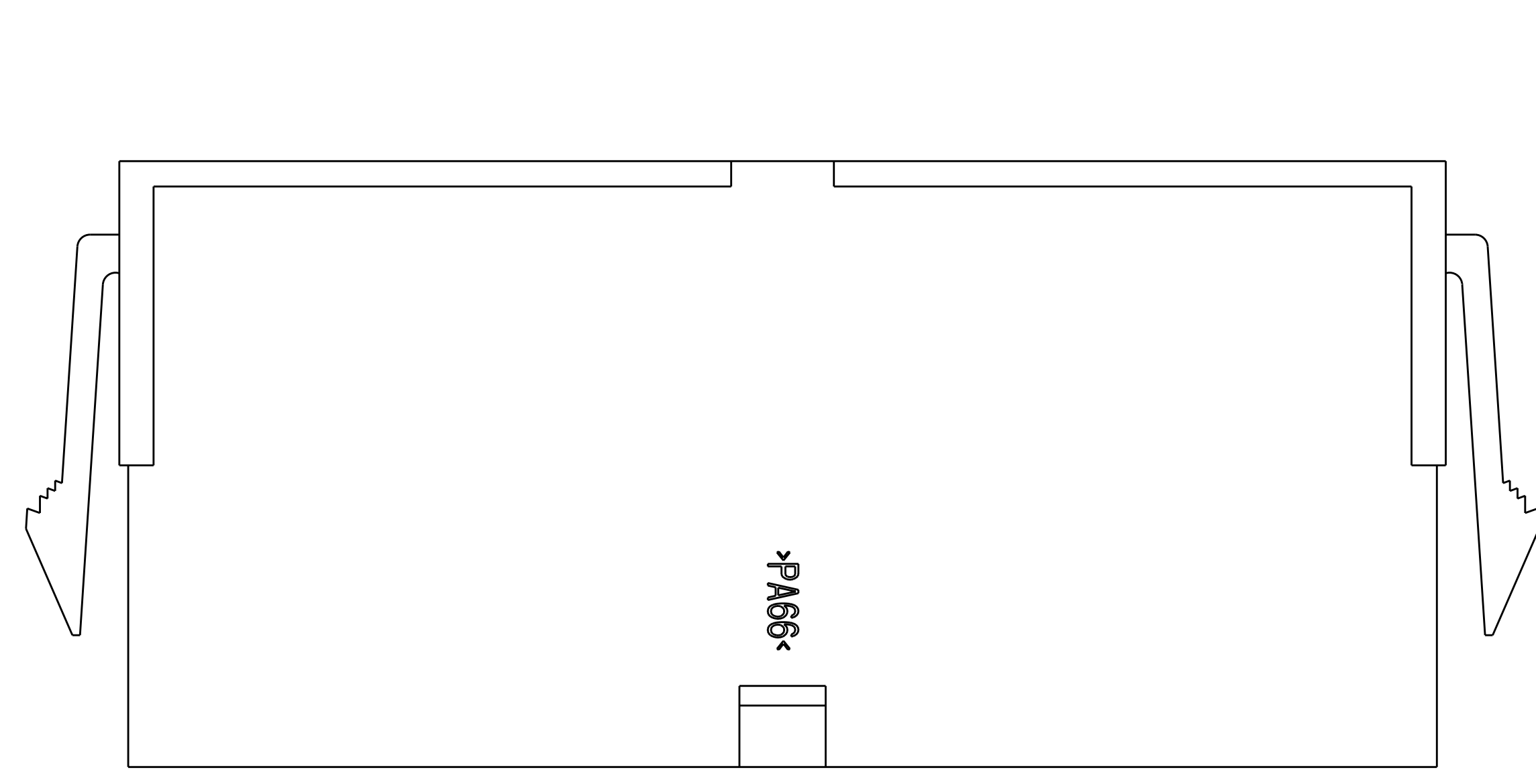
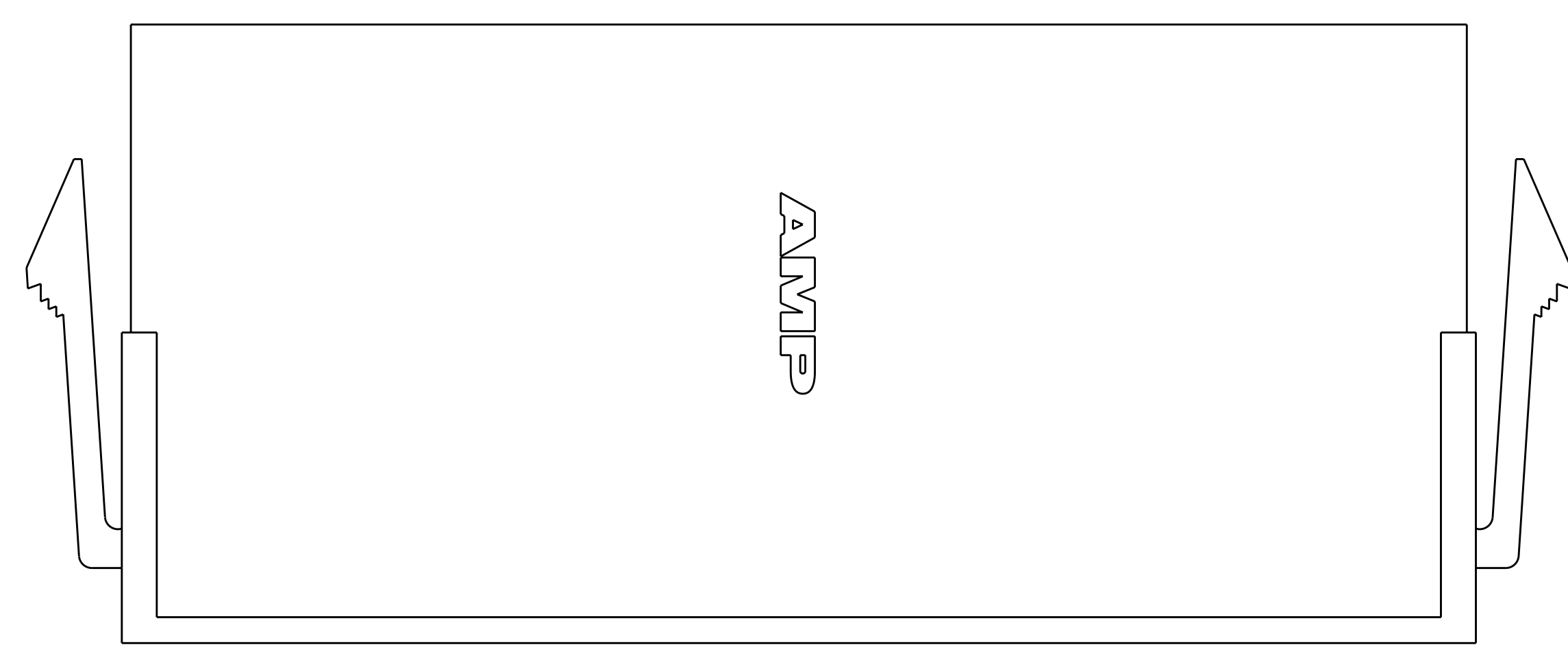
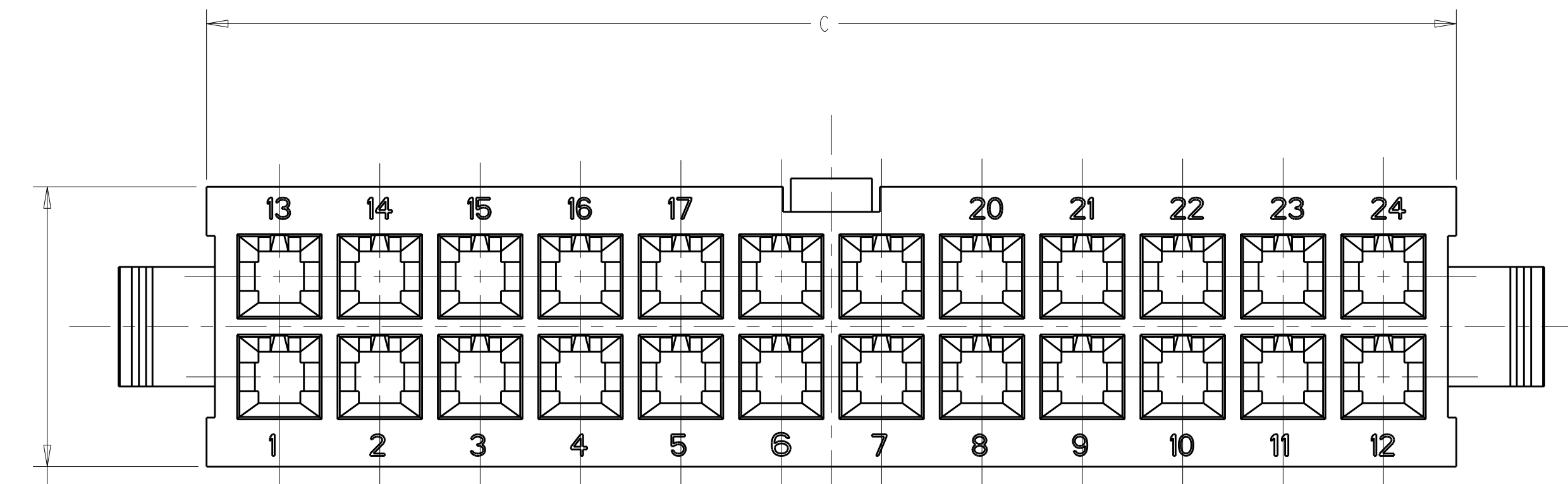
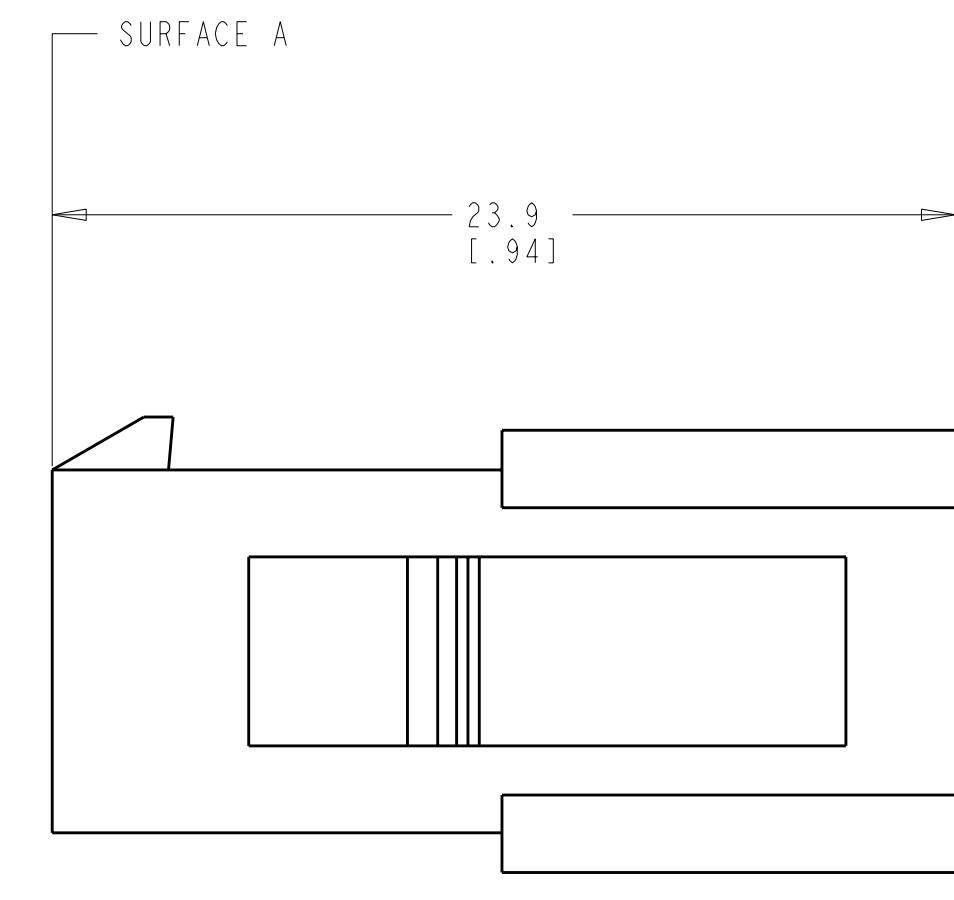
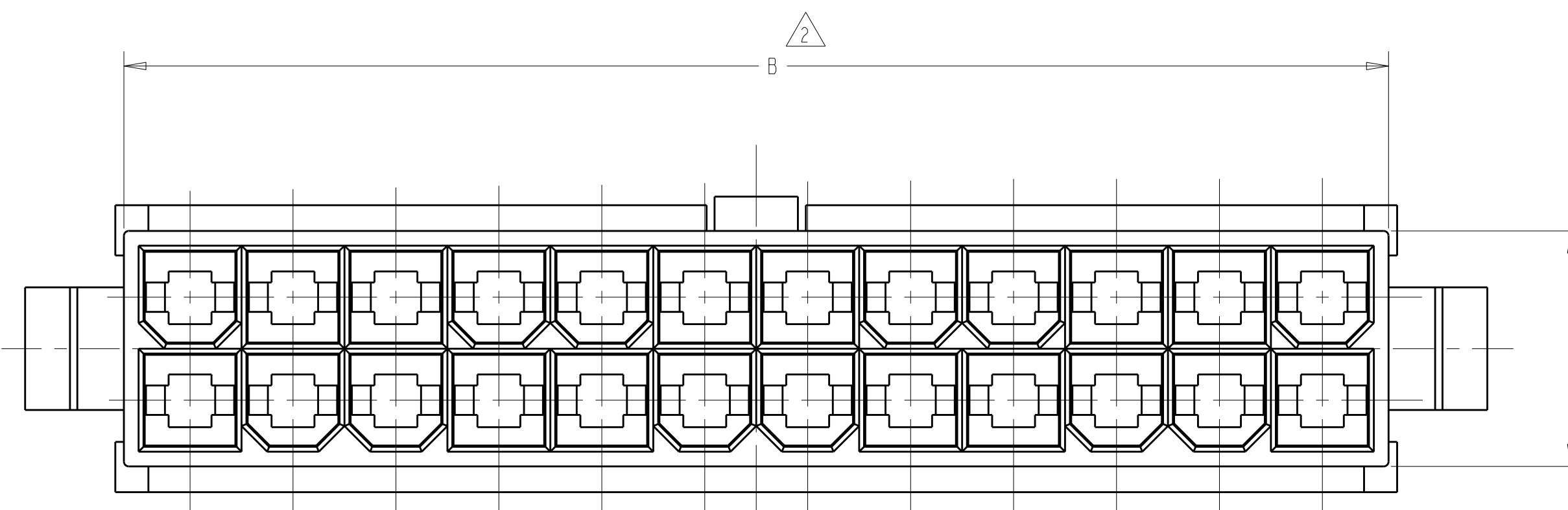


LOC	DIST	REVISIONS			
		REV	DATE	BY	APPD
CM	53	A1	12MAR2011	RK	HMR



RECOMMENDED CUT OUT  
 FOR 2.00[.079] MAX. THICK PANEL



- 1 NYLON, UL94V-2, NATURAL.
- 2 DIMENSION TO BE CHECKED AT SURFACE A.
- 3. DIMENSIONS IN BRACKETS ARE IN INCHES.
- 4. MALE CONTACTS MUST BE INSERTED SO THAT THE TOP OF THE WIRE AND INSULATION CRIMPS ARE FACING THE SIDE OF THE HOUSING WITH THE LOCKING LATCH.
- 5. RECOMMENDED MAX. PANEL THICKNESS 2.00[.079].
- 6. PANEL MUST BE PUNCHED SO THAT THE HOUSING ENTERS THE PANEL IN THE SAME DIRECTION AS THE PUNCH.

C	B	A	NO. OF POSITIONS	PART NUMBER
52.3[2.059]	51.6[2.032]	52.00[2.047]	24	2-794550-4
48.1[1.894]	47.4[1.866]	47.80[1.882]	22	2-794550-2
43.9[1.728]	43.2[1.701]	43.60[1.717]	20	2-794550-0
39.7[1.563]	39[1.535]	39.40[1.551]	18	1-794550-8
35.5[1.398]	34.8[1.370]	35.20[1.386]	16	1-794550-6
31.3[1.232]	30.6[1.205]	35.00[1.220]	14	1-794550-4
27.1[1.067]	26.4[1.039]	26.80[1.055]	12	1-794550-2
22.9[.902]	22.2[.874]	22.60[.889]	10	1-794550-0
18.7[.736]	18.00[.709]	18.40[.724]	8	794550-8
14.5[.571]	13.8[.543]	14.20[.559]	6	794550-6
10.3[.406]	9.6[.378]	10.00[.394]	4	794550-4
6.1[.240]	5.4[.213]	5.80[.228]	2	794550-2



THIS DRAWING IS A CONTROLLED DOCUMENT.

DIMENSIONS: mm [INCHES]	TOLERANCES UNLESS OTHERWISE SPECIFIED:	9 PLC ± .01	5 PLC ± .02	4 PLC ± .03	ANGLES ± .01	FINISH -
-------------------------	--	-------------	-------------	-------------	--------------	----------

MATERIAL: NYLON

APPROVED: R. SWING, C. CASH

DATE: 16MAR99

NAME: PLUG, PANEL MOUNT, 2 TO 24 POSITION, AMP-DUACT™ POWER CONNECTOR

SIZE: A1, CAGE CODE: 00779, DRAWING NO: 794550

SCALE: 4:1, SHEET: 1 OF 1, REV: A1

CUSTOMER DRAWING